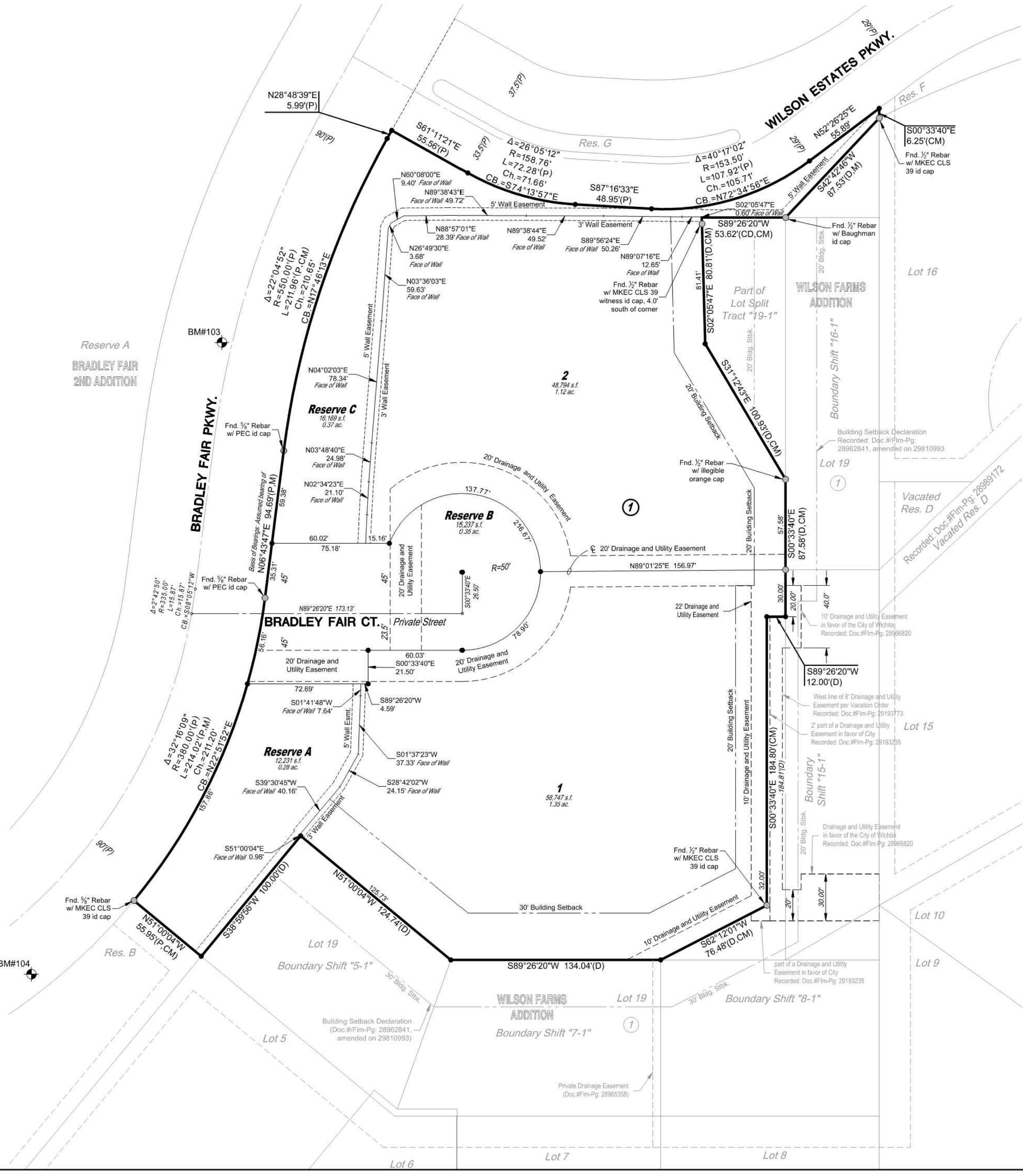
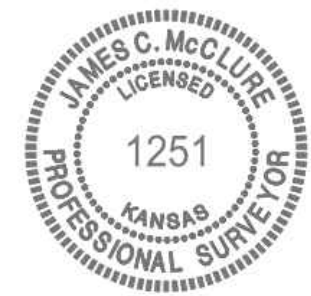
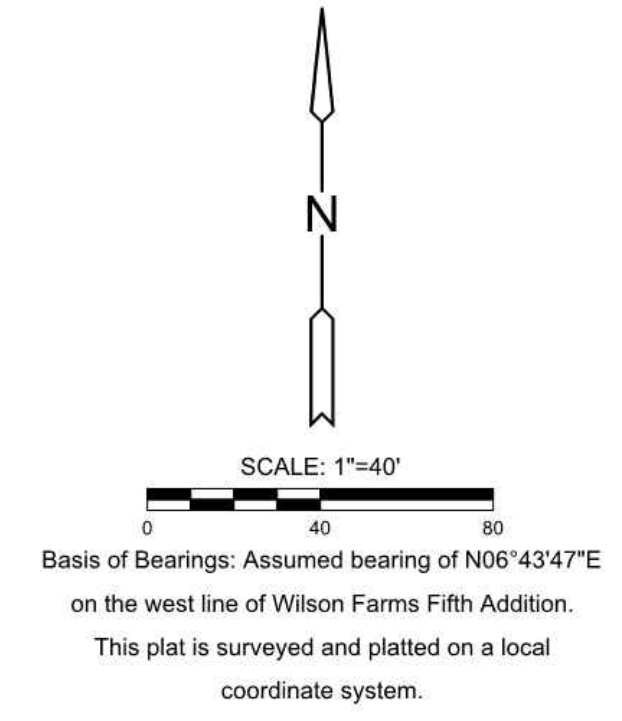


FINAL PLAT WILSON FARMS FIFTH ADDITION AN ADDITION TO WICHITA, SEDGWICK COUNTY, KANSAS



- LEGEND**
Date of Survey: July 2019
- △ = Section Corner Monument Found
 - = Found monument (see annotation for type)
 - = Set 5/8" rebar w/ MKEC CLS 39 id. cap
 - ⊕ = Benchmark
 - (M) = Measured
 - (P) = Platted
 - (D) = Described
 - (CM) = Calculated from Measured
 - (CD) = Calculated from Described
 - 1 = Lot
 - ① = Block

- BENCHMARKS**
- BM#103 Chiseled square on south end of median island in Bradley Fair Parkway, 200' +/- south of Wilson Estates Parkway. Elev.=1392.31 NAVD88
 - BM#104 Chiseled square on southeast corner of curb inlet on east side of Bradley Fair Parkway, 625' +/- south of Wilson Estates Parkway. Elev.=1391.04 NAVD88

