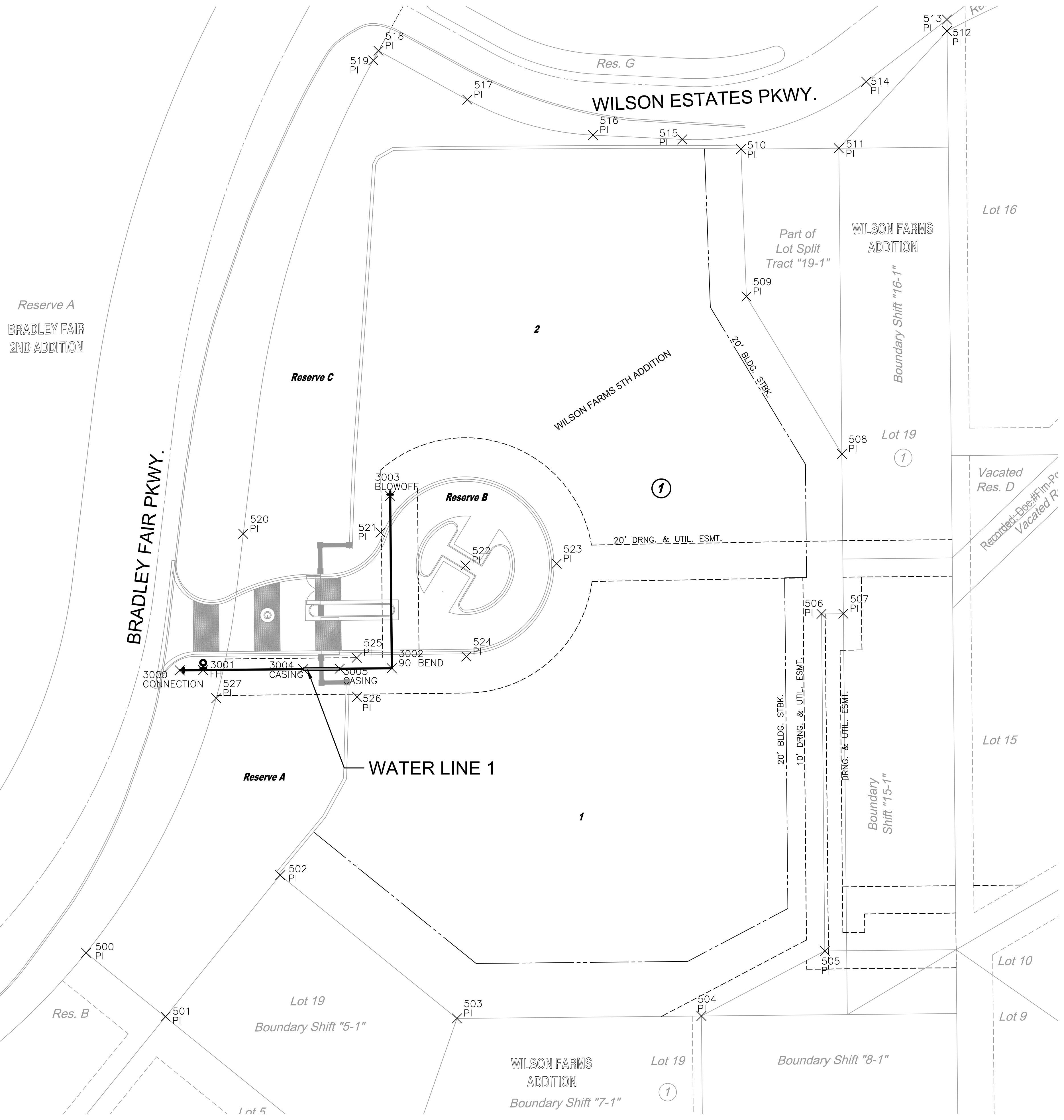


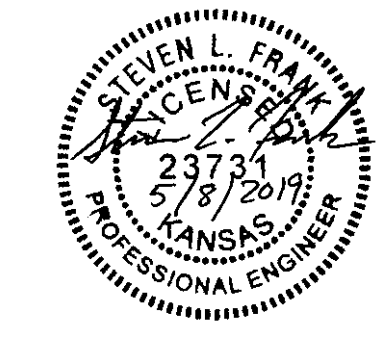
PLOTTED: Tuesday, May 07, 2019 @ 04:32PM

J:\PROJECTS\2018\1801010442\_HOOVER\_WILSON FARMS 5TH ADDITION CAD\SHOTS\505\_CIVIL\WTR180442\_05\_3500.DWG



PLAT POINTS			
Point #	Northing	Easting	Desc.
500	15308.49	14330.30	PI
501	15273.50	14373.97	PI
502	15350.99	14436.72	PI
503	15272.49	14533.67	PI
504	15273.80	14667.70	PI
505	15309.47	14735.35	PI
506	15494.26	14733.54	PI
507	15494.38	14745.54	PI
508	15581.96	14744.68	PI
509	15668.28	14692.38	PI
510	15749.04	14689.42	PI
511	15749.56	14743.04	PI
512	15813.88	14802.41	PI
513	15820.13	14802.35	PI
514	15786.06	14758.05	PI
515	15754.42	14657.18	PI
516	15756.74	14608.29	PI
517	15776.21	14539.32	PI
518	15802.99	14490.64	PI
519	15797.74	14487.75	PI
520	15538.16	14416.50	PI
521	15538.90	14491.68	PI
522	15520.85	14538.31	PI
523	15521.75	14588.30	PI
524	15470.86	14538.80	PI
525	15470.27	14478.77	PI
526	15448.77	14478.98	PI
527	15448.01	14401.70	PI

WATER POINTS			
Point #	Northing	Easting	Desc.
3000	15463.32	14381.73	CONNECTION
3001	15463.44	14394.54	FH
3002	15464.46	14497.97	90 BEND
3003	15558.97	14497.07	BLOWOFF
3004	15463.98	14449.36	CASING
3005	15464.18	14469.35	CASING



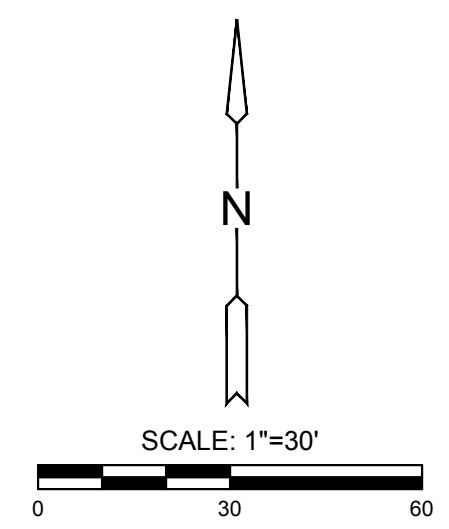
**CONTROL POINTS**

DATUM:  
 1) THE PROJECT HORIZONTAL DATUM IS BASED ON PREVIOUSLY ESTABLISHED ASSUMED COORDINATES  
 2) THE VERTICAL DATUM USED IS NAVD88.

CONTROL PT. NO.	NORTH	EAST	ELEV.	DESCRIPTION
100	15571.543	14653.552	1387.910	5/8" REBAR W/ RED MKEC CONTROL PT. ID CAP
101	15375.632	14630.428	1387.280	5/8" REBAR W/ RED MKEC CONTROL PT. ID CAP
103	15666.075	14383.168	1392.310	CHISELED "X"
104	15260.667	14265.103	1391.040	CHISELED "X"
105	15451.739	14327.596	1391.130	PK-NAIL

**UTILITIES:**  
 THE UNDERGROUND UTILITIES SHOWN HEREON WERE MARKED IN THE FIELD BY THE UTILITY OWNERS IN RESPONSE TO KANSAS ONE CALL TICKET NUMBER: 18310838. THE SURVEYOR MAKES NO GUARANTEE THAT THE UNDERGROUND UTILITIES SHOWN COMPRISE ALL SUCH UTILITIES IN THE AREA, EITHER IN SERVICE OR ABANDONED. THE SURVEYOR FURTHER DOES NOT WARRANT THAT THE UNDERGROUND UTILITIES SHOWN ARE IN THE EXACT LOCATION INDICATED ALTHOUGH HE DOES CERTIFY THAT THEY ARE LOCATED AS ACCURATELY AS POSSIBLE FROM INFORMATION AVAILABLE. THE SURVEYOR HAS NOT PHYSICALLY LOCATED THE UNDERGROUND UTILITIES.

**NOTE:**  
 ALL CONTROL POINTS SHOWN HAVE ELEVATIONS ESTABLISHED BY DIFFERENTIAL LEVELING AND CAN BE USED AS TEMPORARY BENCHMARKS. WHEN USING A CONTROL POINT AS A TEMPORARY BENCHMARK, IT IS RECOMMENDED THAT CROSS-CHECKS BE MADE TO OTHER CONTROL POINTS OR BENCHMARKS TO CONFIRM ELEVATIONS PRIOR TO USE.



EVERY ATTEMPT HAS BEEN MADE TO INSURE ALL COORDINATE VALUES SHOWN ARE AN ACCURATE AND TRUE REPRESENTATION OF THE CURRENT PLANS. ALL VALUES ARE TO BE CONFIRMED WITH THE FINAL SIGNED PLAN SET BEFORE USE.



WATER DISTRIBUTION PLANS FOR  
**WILSON FARMS 5TH ADDITION**  
 WICHITA, KANSAS

©2019 MKEC Engineering All Rights Reserved  
 These drawings and their contents, including, but not limited to, all concepts, designs, & ideas are the exclusive property of MKEC Engineering (MKEC), and may not be used or reproduced in any way without the express consent of MKEC.

**BUBBLE MAP**

PROJECT NO.	468-2019-003876	
DATE	MAY 2019	
SCALE	1"=30'	
DESIGNED	DRAWN	CHECKED
SLF	CRM	SLF
NO.	REVISION	DATE