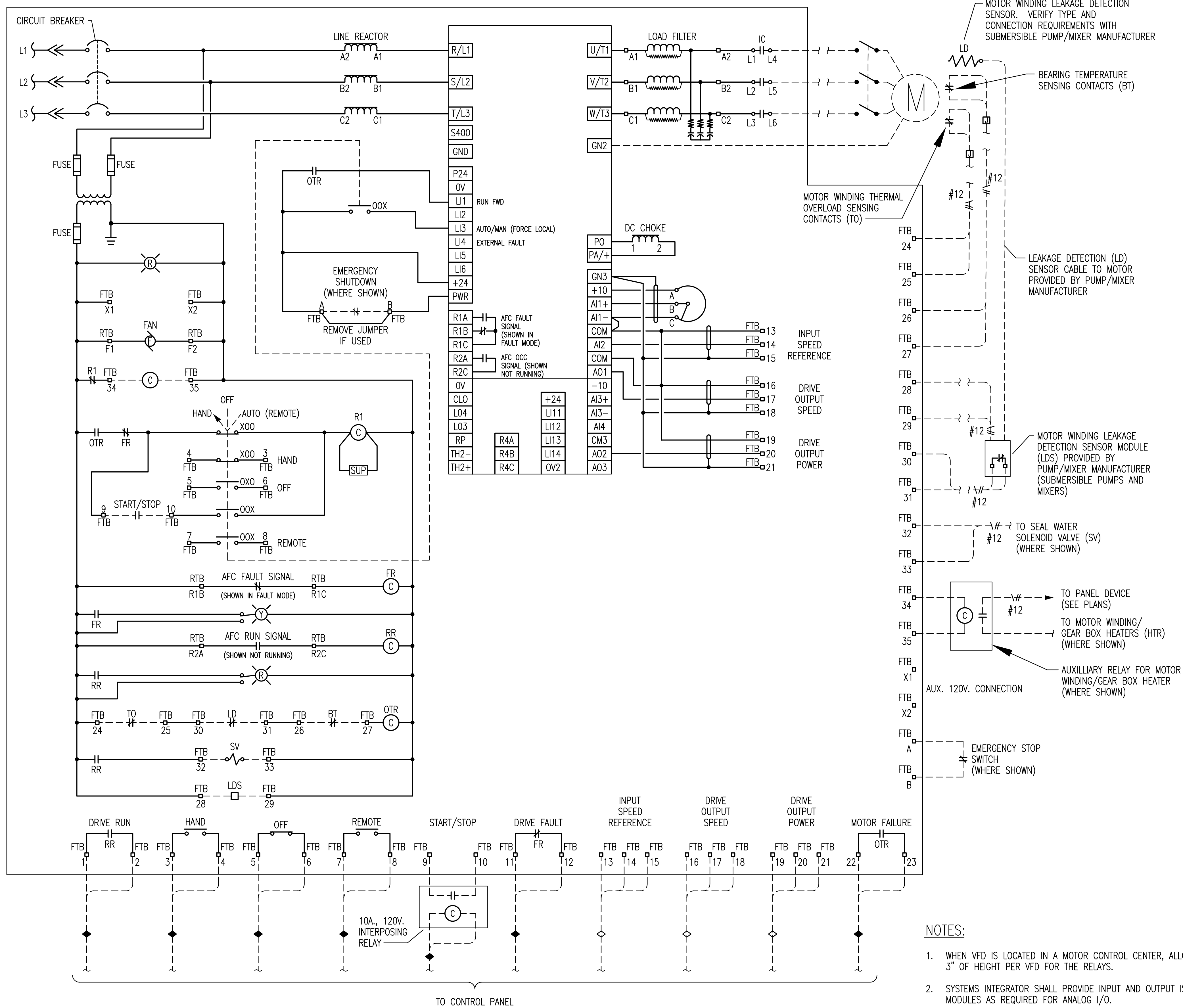
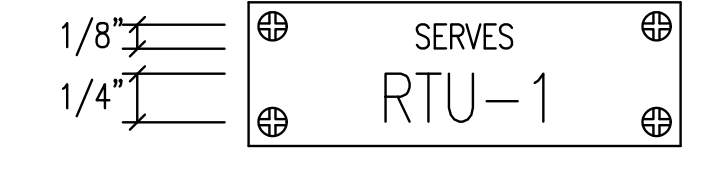


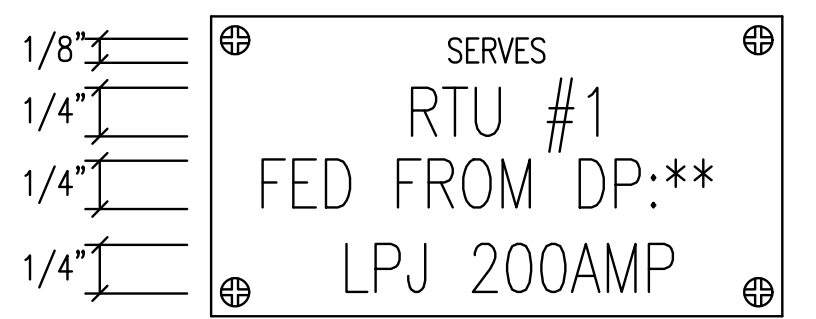
MABCD REVIEWER:



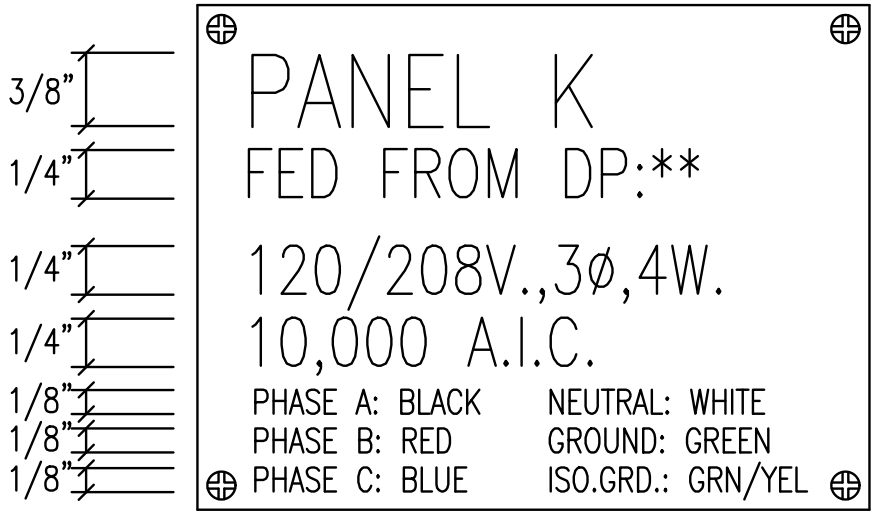
1 VARIABLE FREQUENCY DRIVE WIRING DIAGRAM
NO SCALE



SWITCHBOARD/DISTRIBUTION PANEL/MOTOR CONTROL CENTER BREAKER/SWITCH



DISCONNECT SWITCH



BRANCH CIRCUIT/DISTRIBUTION PANEL

2 TYPICAL NAME PLATES
NO SCALE

NOTE: SEE SPECIFICATION SECTION 260500 FOR NAME PLATE COLOR REQUIREMENTS.

NOTES:

1. WHEN VFD IS LOCATED IN A MOTOR CONTROL CENTER, ALLOW AN ADDITIONAL 3" OF HEIGHT PER VFD FOR THE RELAYS.
2. SYSTEMS INTEGRATOR SHALL PROVIDE INPUT AND OUTPUT ISOLATION MODULES AS REQUIRED FOR ANALOG I/O.
3. ALL VARIABLE FREQUENCY DRIVES SHOWN IN PROCESS EQUIPMENT CONNECTION SCHEDULES SHALL BE PROVIDED WITH THE RELAYS AND EQUIPMENT AS SHOWN IN THIS DIAGRAM.
4. IF MECHANICAL EQUIPMENT IS CONTROLLED BY THE SCADA SYSTEM, ALL VARIABLE FREQUENCY DRIVES SHOWN IN MECHANICAL EQUIPMENT CONNECTION SCHEDULES SHALL BE PROVIDED WITH THE RELAYS AND EQUIPMENT AS SHOWN IN THIS DIAGRAM.

Save: 12-11-2018 11:35:44 AM by SWS
Plot Scale: 1:1 12-19-2018 2:25:56 PM by CAL
U:\Wichita-Civil\2017\170920\000\Elec\Drawings\170920-000 - E1.1 ELECTRICAL DETAILS

No.	Revision	By	Date
CITY OF WICHITA, KANSAS			
ELECTRICAL DETAILS			
37TH STREET BOOSTER PUMP STATION IMPROVEMENTS			
PEC PROFESSIONAL ENGINEERING CONSULTANTS, P.A. 303 SOUTH TOPEKA WICHITA, KS 67202 316-262-2891 www.pec1.com			
Designed by RWW	Job No. 34-170920-000	Sht. E.1.1 of	
Drawn by MAL	Date DECEMBER 2018		

