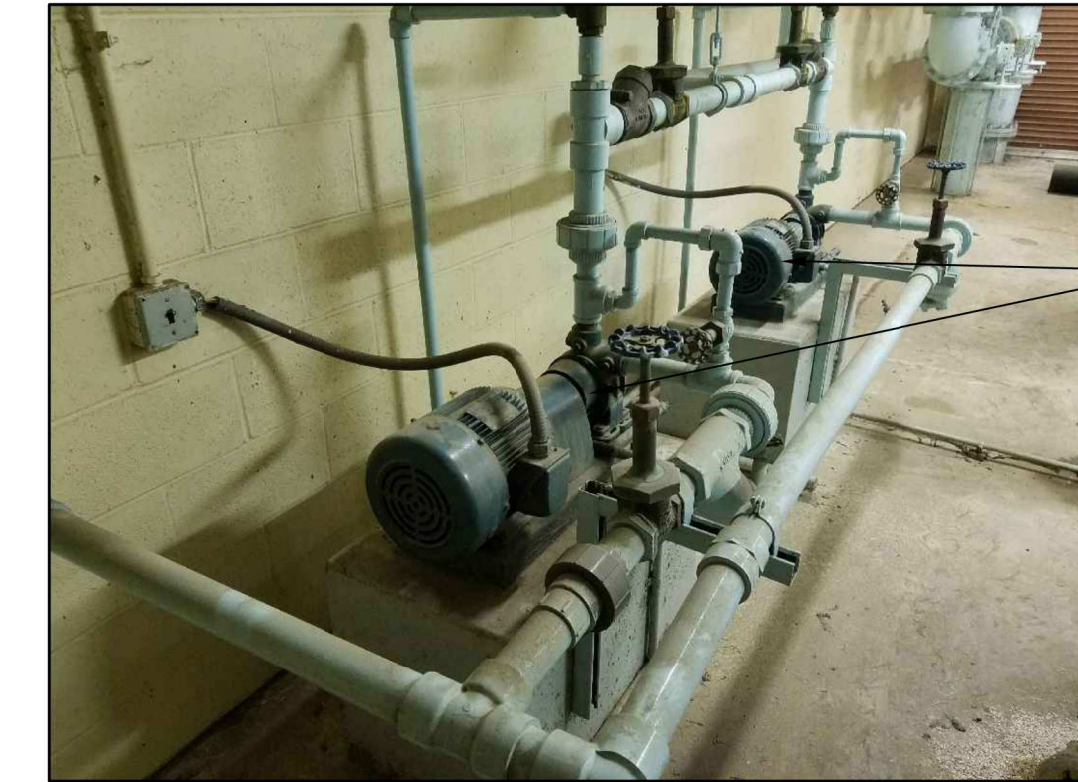


MABCD REVIEWER:

PHOTO 1



Existing Booster Pumps

REMOVE EXISTING CHLORINE FEED BOOSTER PUMPS, ASSOCIATED PIPING AND CONCRETE PUMP BASES.

PHOTO 2

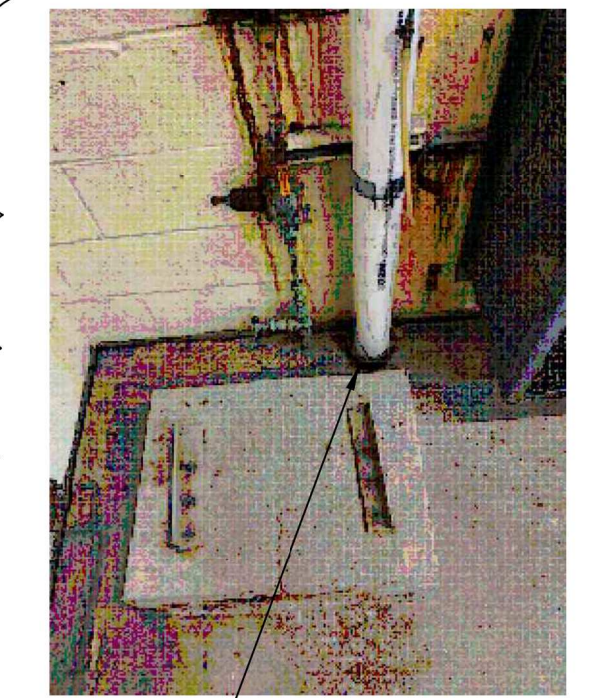
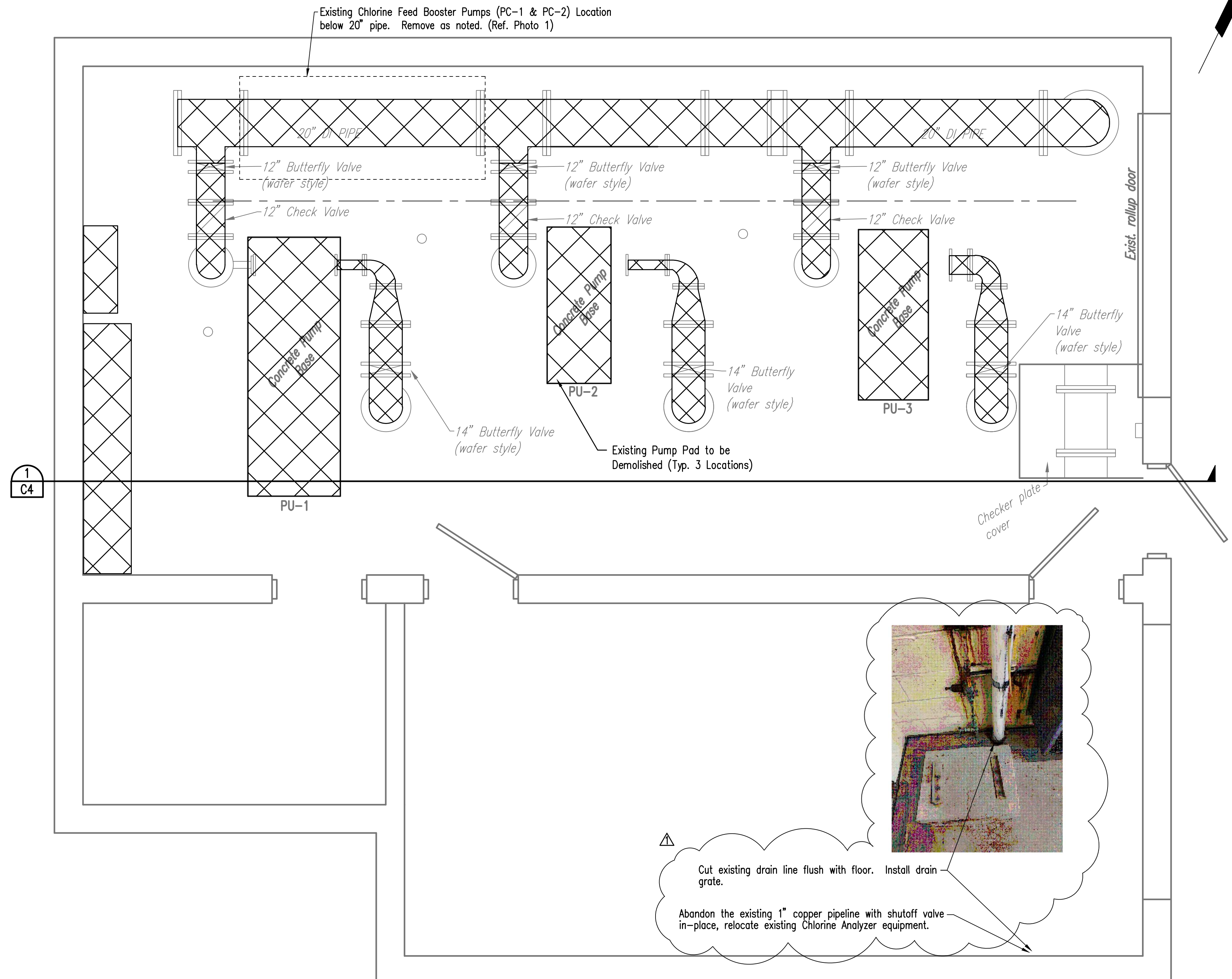


TYPICAL PUMP DISCHARGE PIPING (3 REQ'D)

PHOTO 3



TYPICAL PUMP SUCTION PIPING (3 REQ'D)



△ Cut existing drain line flush with floor. Install drain grate.

Abandon the existing 1" copper pipeline with shutoff valve in-place, relocate existing Chlorine Analyzer equipment.

PIPING PLAN - DEMOLITION
SCALE: 1/2" = 1'-0"



DENOTES PIPING, EQUIPMENT AND CONCRETE PADS FOR REMOVAL OR MODIFICATION.

	Issued for Bid		CL	4/30/2019
	No.	Revision	By	Date
CITY OF WICHITA, KANSAS				
PIPING PLAN - DEMOLITION				
37TH STREET BOOSTER PUMP STATION IMPROVEMENTS				
		PROFESSIONAL ENGINEERING CONSULTANTS, P.A. 303 SOUTH TOPEKA WICHITA, KS 67202 316-262-2891 www.pec1.com		
Designed by	NDF	Job No.	34-170920-000	Sht. C2 of 5
Drawn by		Date	DECEMBER 2018	

Saved 04-29-2019 4:17:39 PM by CAL
 Plot Scale 1:1 04-29-2019 4:24:55 PM by CAL
 U:\Wichita-Civil\2017\170920\000\W_1W\Drawings\170920-000 C2 Piping Plan Demo