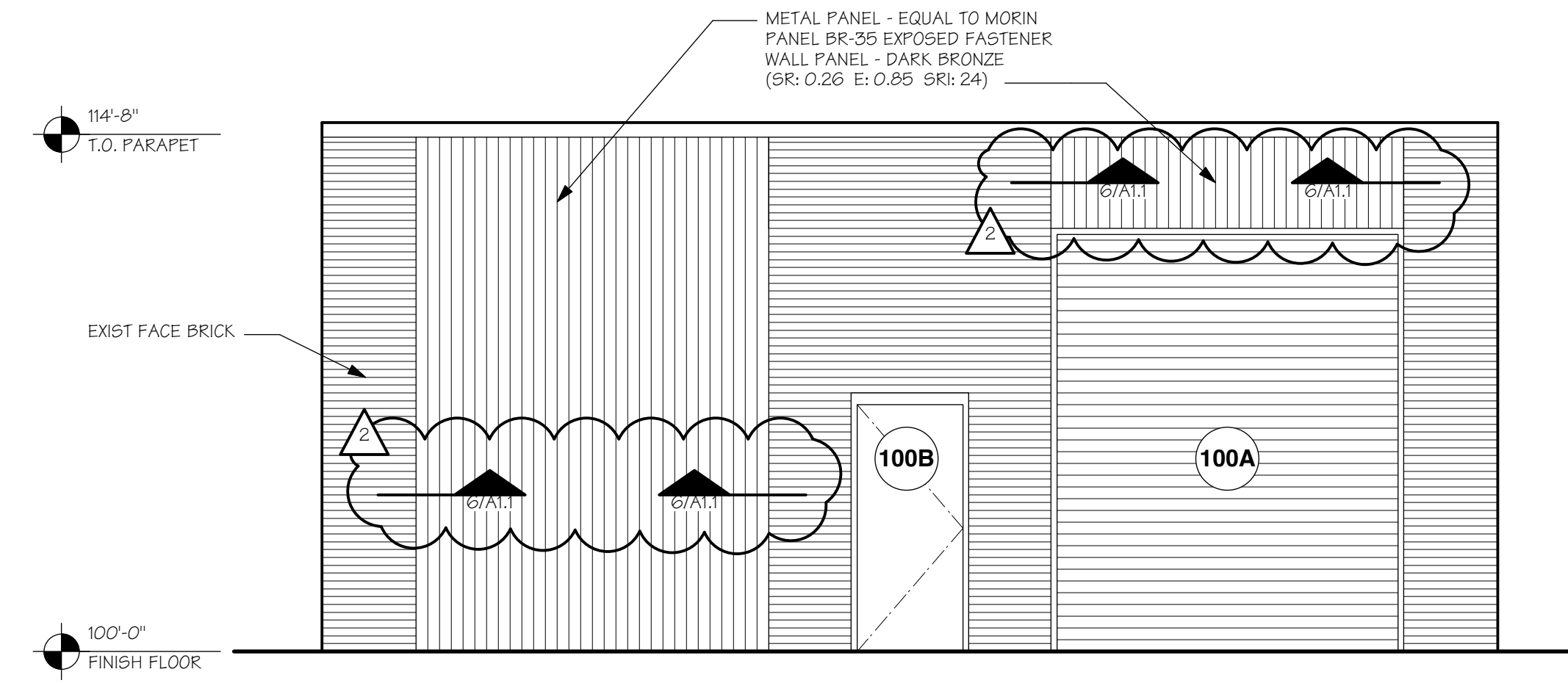
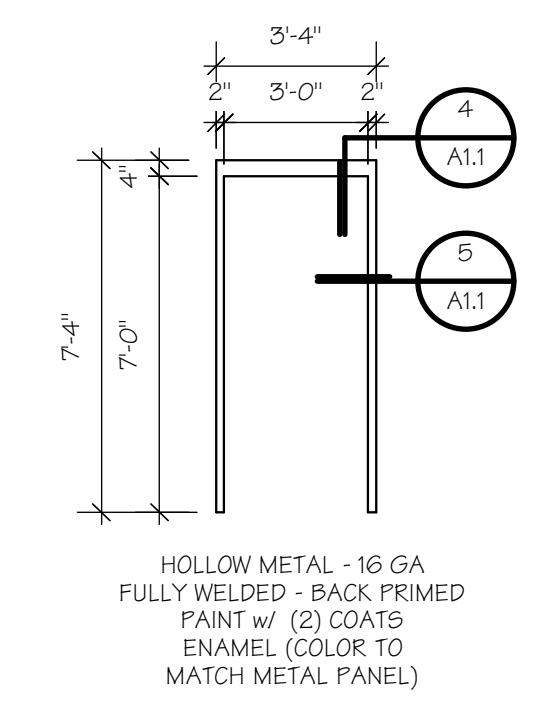


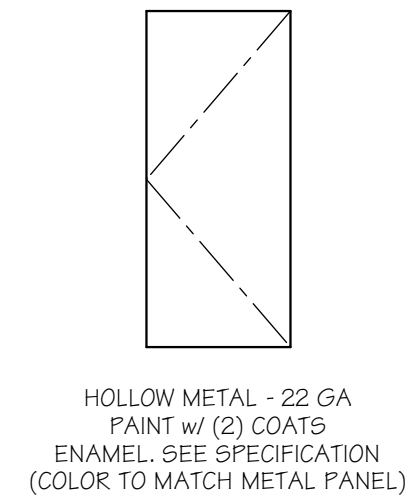
MABCD REVIEWER:



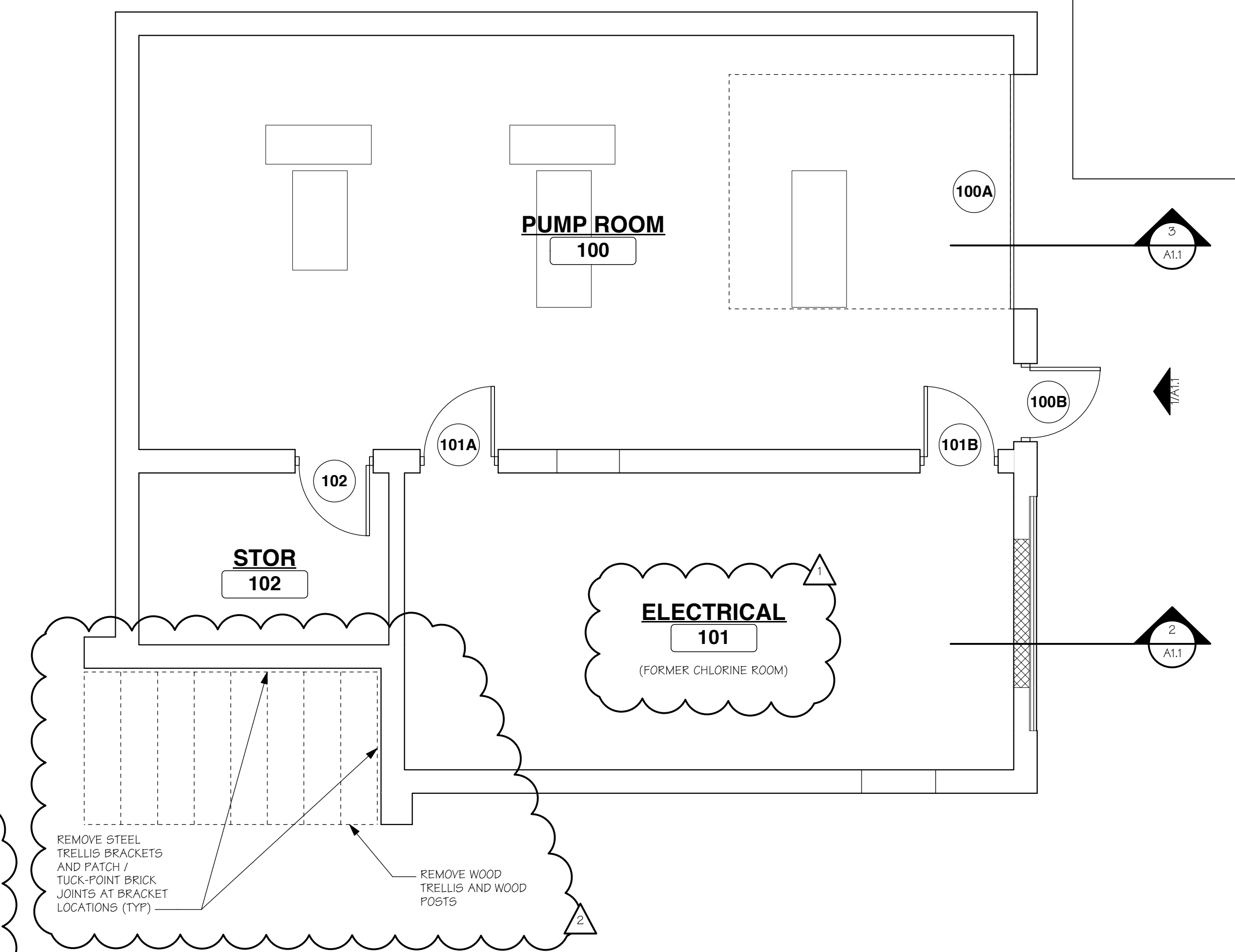
1 EAST ELEVATION
Scale: 1/4" = 1'-0"



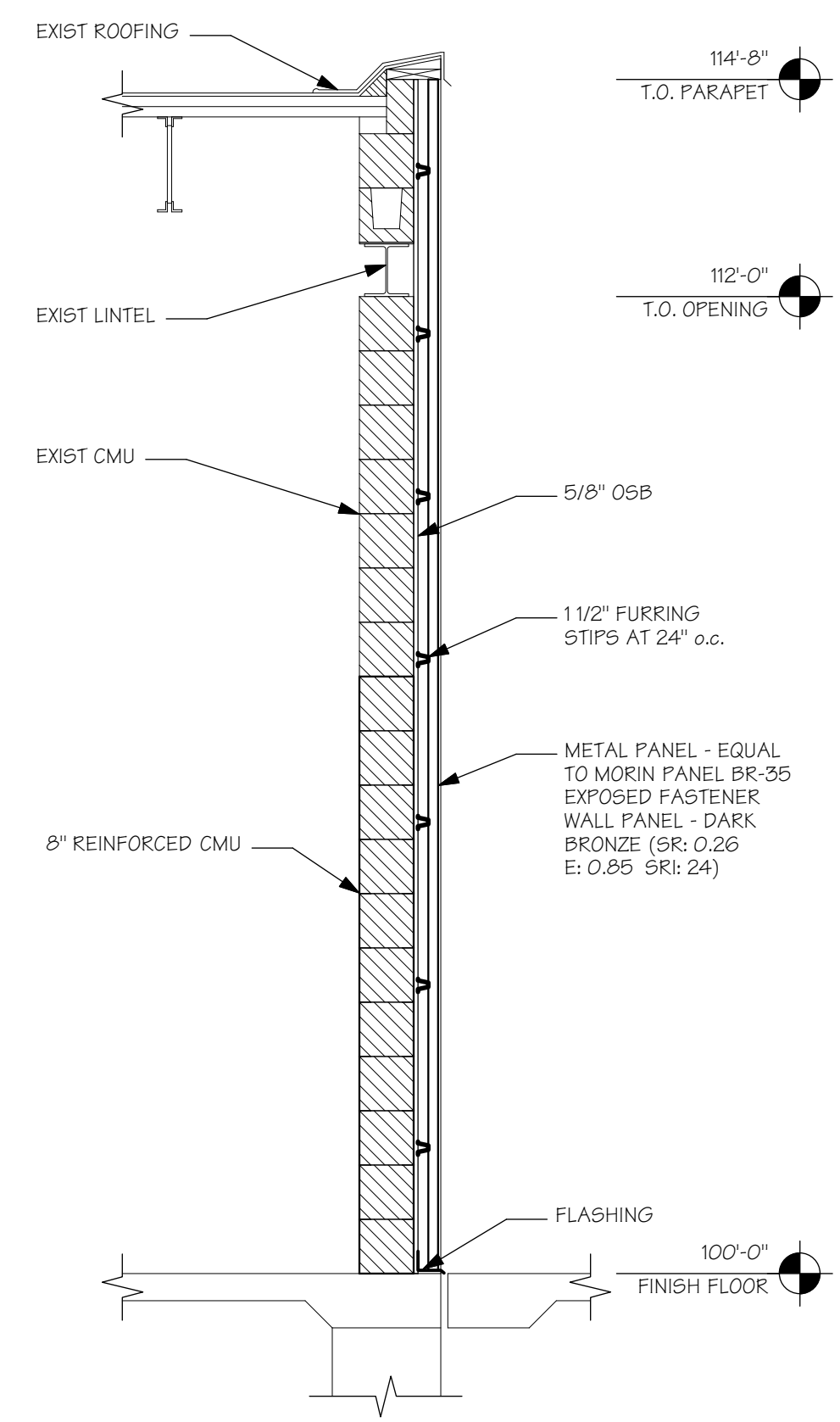
FRAME TYPES
Scale: 1/4" = 1'-0"



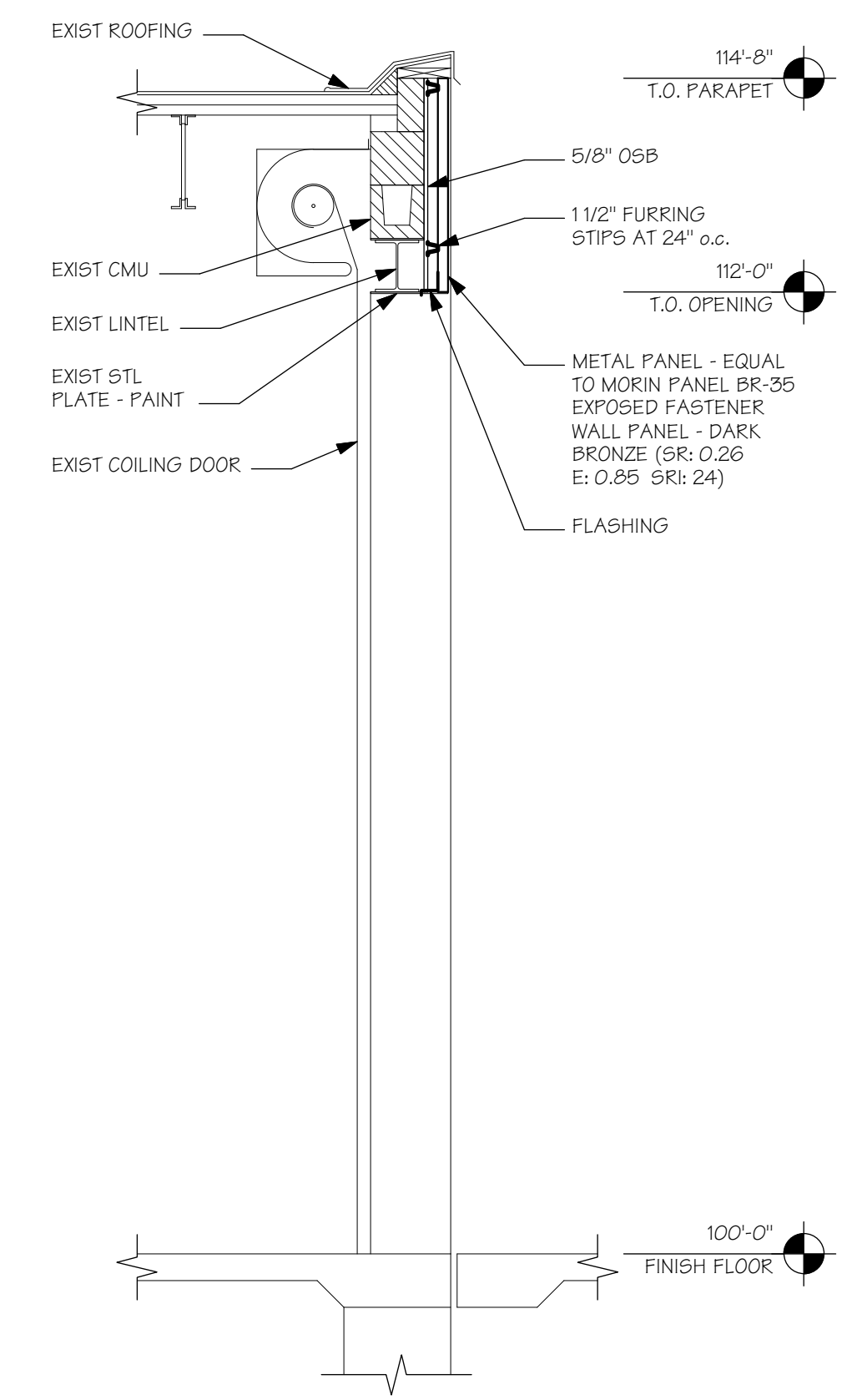
DOOR TYPES
Scale: 1/4" = 1'-0"



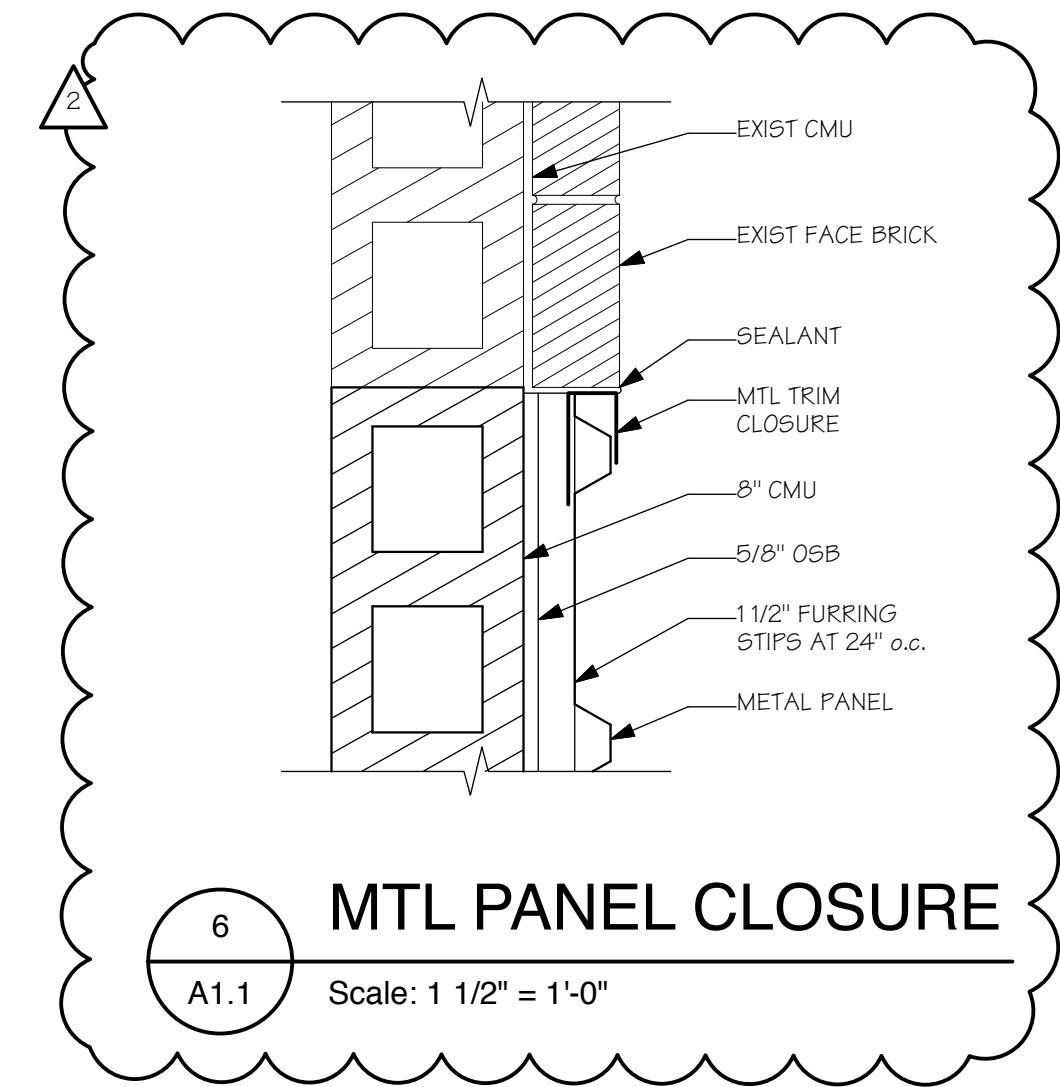
FLOOR PLAN
Scale: 1/4" = 1'-0"



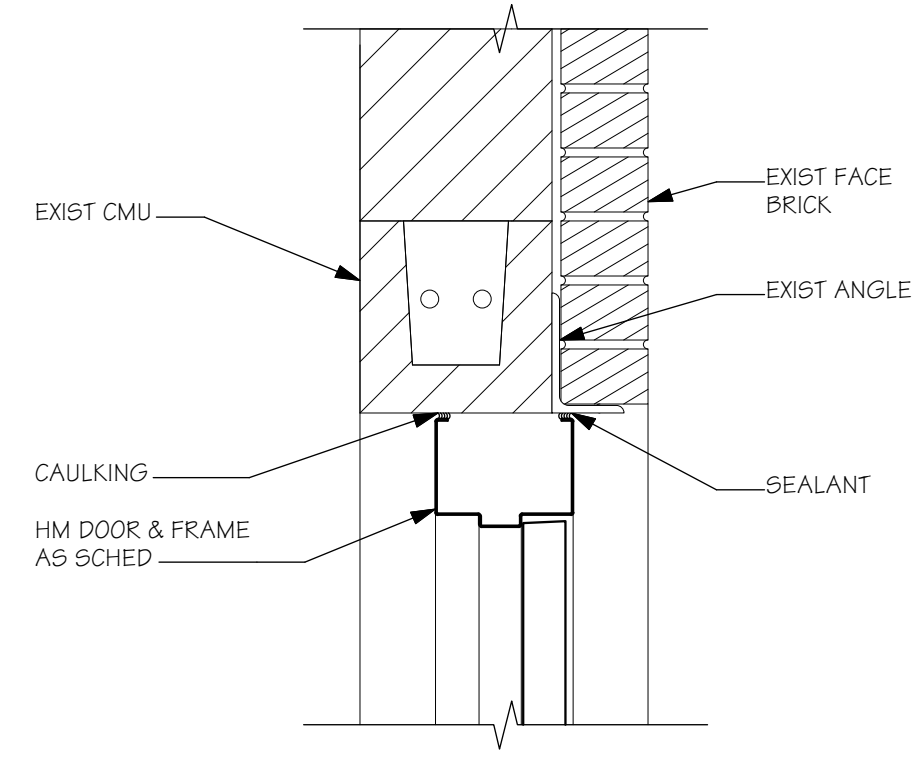
2 WALL SECTION
Scale: 1/2" = 1'-0"



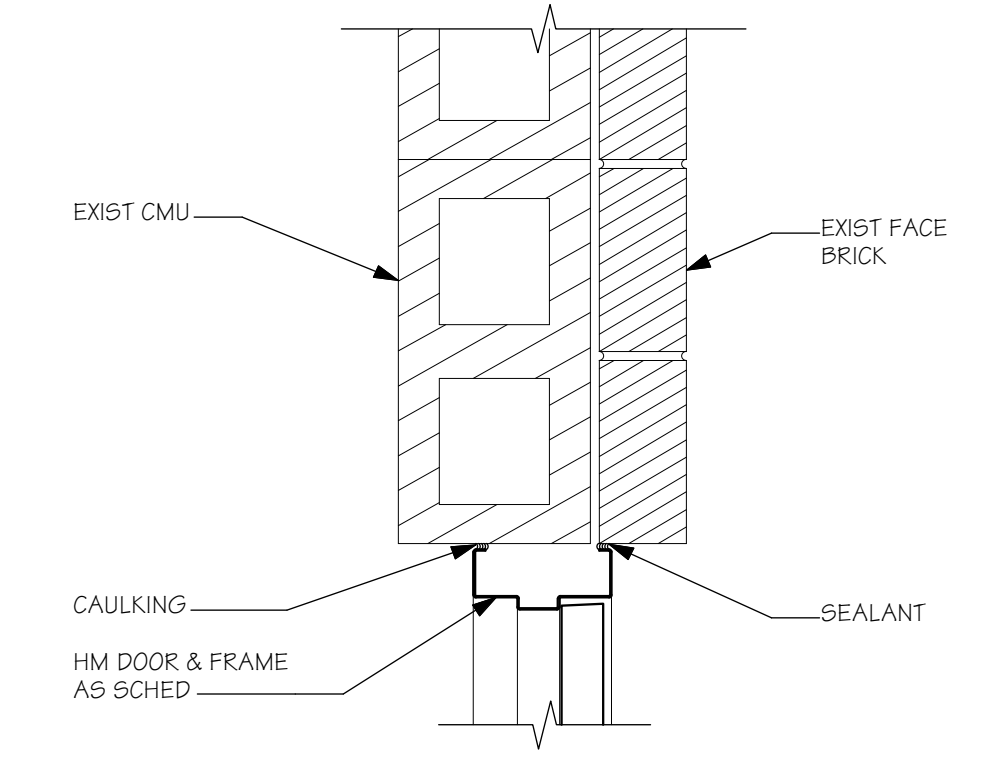
3 WALL SECTION
Scale: 1/2" = 1'-0"



6 MTL PANEL CLOSURE
Scale: 1 1/2" = 1'-0"



4 HEAD
Scale: 1 1/2" = 1'-0"



5 JAMB
Scale: 1 1/2" = 1'-0"

| MARK | DOORS | | | | | FRAME | | | | HDW | LABEL | REMARKS | |
|------|-------|-------|-------|--------|--------|-------|-------|-------|--------|--------|-------|---------|---------------|
| | TYPE | MAT | WIDTH | HEIGHT | THKNS | GLASS | TYPE | MAT | JAMB | | | | HEAD |
| 100A | EXIST | EXIST | EXIST | EXIST | - | - | EXIST | EXIST | - | - | - | - | NO WORK |
| 100B | 1 | HM | 3'-0" | 7'-0" | 1 3/4" | - | A | HM | 5/A1.1 | 4/A1.1 | - | SET 2 | - |
| 101A | EXIST | EXIST | EXIST | EXIST | - | - | EXIST | EXIST | - | - | - | SET 1 | HARDWARE ONLY |
| 101B | EXIST | EXIST | EXIST | EXIST | - | - | EXIST | EXIST | - | - | - | SET 1 | HARDWARE ONLY |
| 102 | EXIST | EXIST | EXIST | EXIST | - | - | EXIST | EXIST | - | - | - | - | NO WORK |

Revision 2
Revision 1

CITY OF WICHITA, KANSAS

ARCHITECTURAL IMPROVEMENTS

37th STREET BOOSTER PUMP STATION IMPROVEMENTS

GRAVITY WORKS ARCHITECTURE
101 S. Star Street
El Dorado, KS 67042
phone: (316) 321-4274
www.gravityworks-architecture.com

PEC PROFESSIONAL ENGINEERING CONSULTANTS, P.A.
303 SOUTH TOPEKA WICHITA, KS 67202
316-262-2691 www.pec1.com

Designed by SCU
Job No. 34-161372-000
Date DECEMBER 19, 2018

VH 4-30-19
KP 3-29-19

Sht A1 of 1