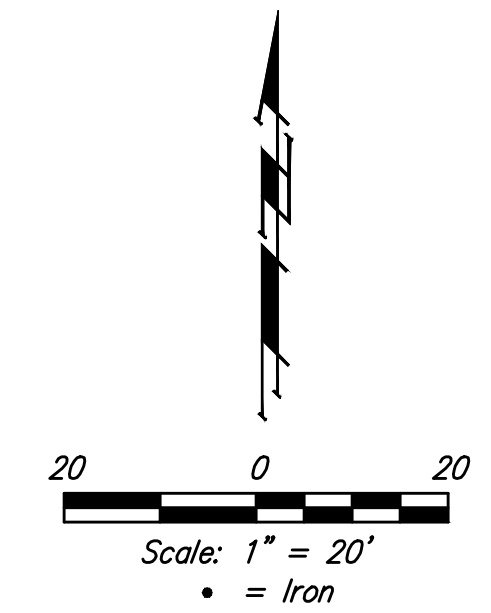


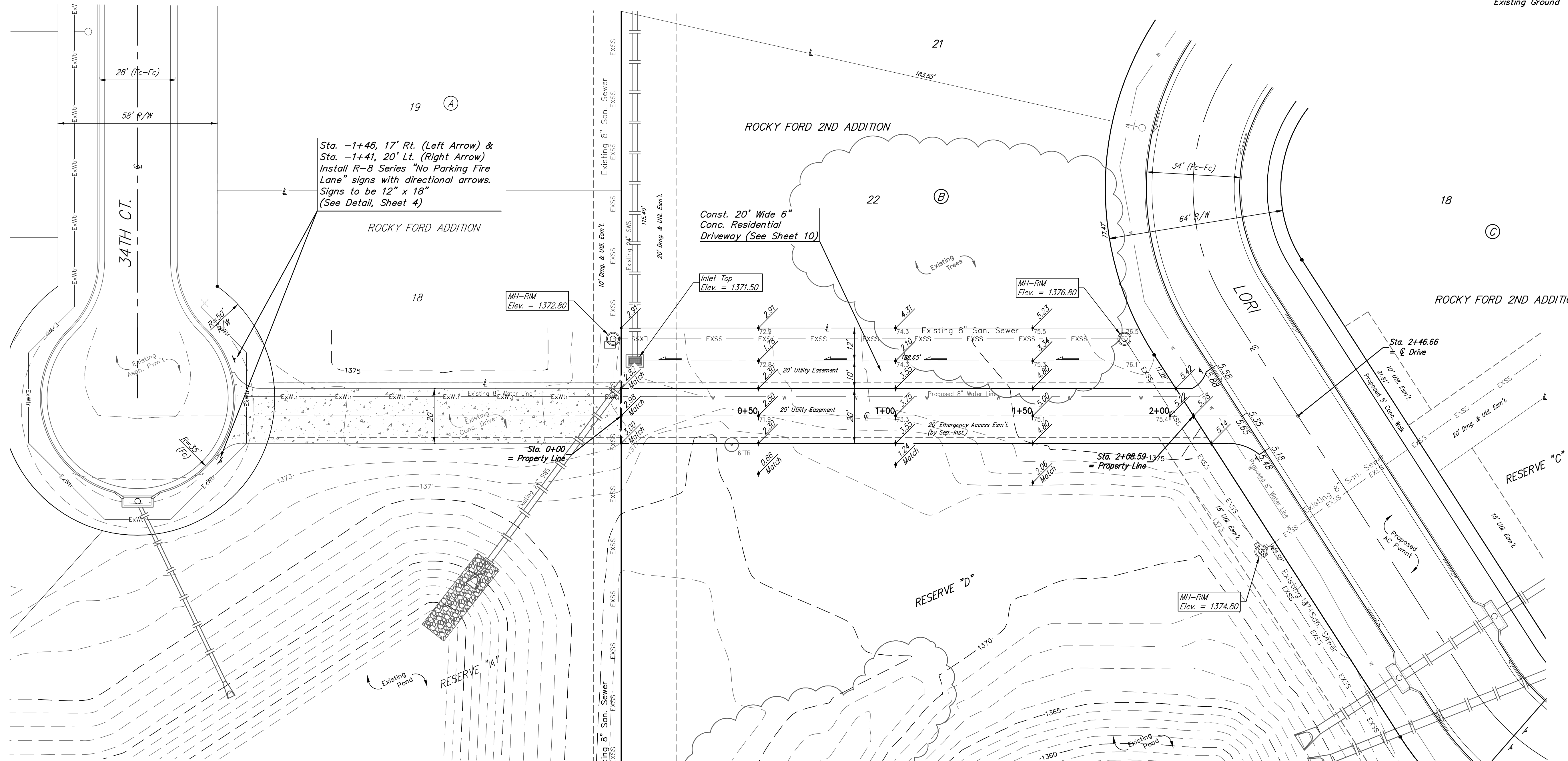
**BENCHMARK:**  
 "□" in top of curb adjacent to the southwest corner of Lot 6, Block A, Rocky Ford 2nd Addition.  
 Elev. = 1385.10 NAVD88

City of Wichita Benchmark Disk Adjacent to fire hydrant at east end of the south return, Lori & Lori Ct, NW Cor., Lot 11, Blk C, Rocky Ford 2nd Addition.  
 Elev. = 1383.10 NAVD88

"□" in top of curb adjacent to the southwest corner of Lot 14, Block C, Rocky Ford 2nd Addition.  
 Elev. = 1380.11 NAVD88



Existing Ground ——— -1364———



Sta. -1+46, 17' Rt. (Left Arrow) & Sta. -1+41, 20' Lt. (Right Arrow)  
 Install R-8 Series "No Parking Fire Lane" signs with directional arrows.  
 Signs to be 12" x 18"  
 (See Detail, Sheet 4)

Const. 20' Wide 6" Conc. Residential Driveway (See Sheet 10)

Roll type curb & gutter to be constructed on the pavement on this sheet.  
 Top of curb elevation are given for full height curb.

		<b>Rocky Ford 2nd Addition - Phase II</b> <b>EMERGENCY ACCESS DRIVE ENTRANCE</b>	
		<small>Baughman Company, P.A. 315 Ellis St. Wichita, KS 67211 P 316-262-7271 F 316-262-0149          ENGINEERING   SURVEYING   PLANNING   LANDSCAPE ARCHITECTURE</small>	
PROJECT NUMBER <b>472-85431</b>	DESIGN <b>AEG</b>	DRAWN <b>JAK</b>	
REVISIONS:	APPROVED 	DATE <b>5/28/19</b>	
	SCALE <b>Noted</b>		
			<b>10 OF 21</b>