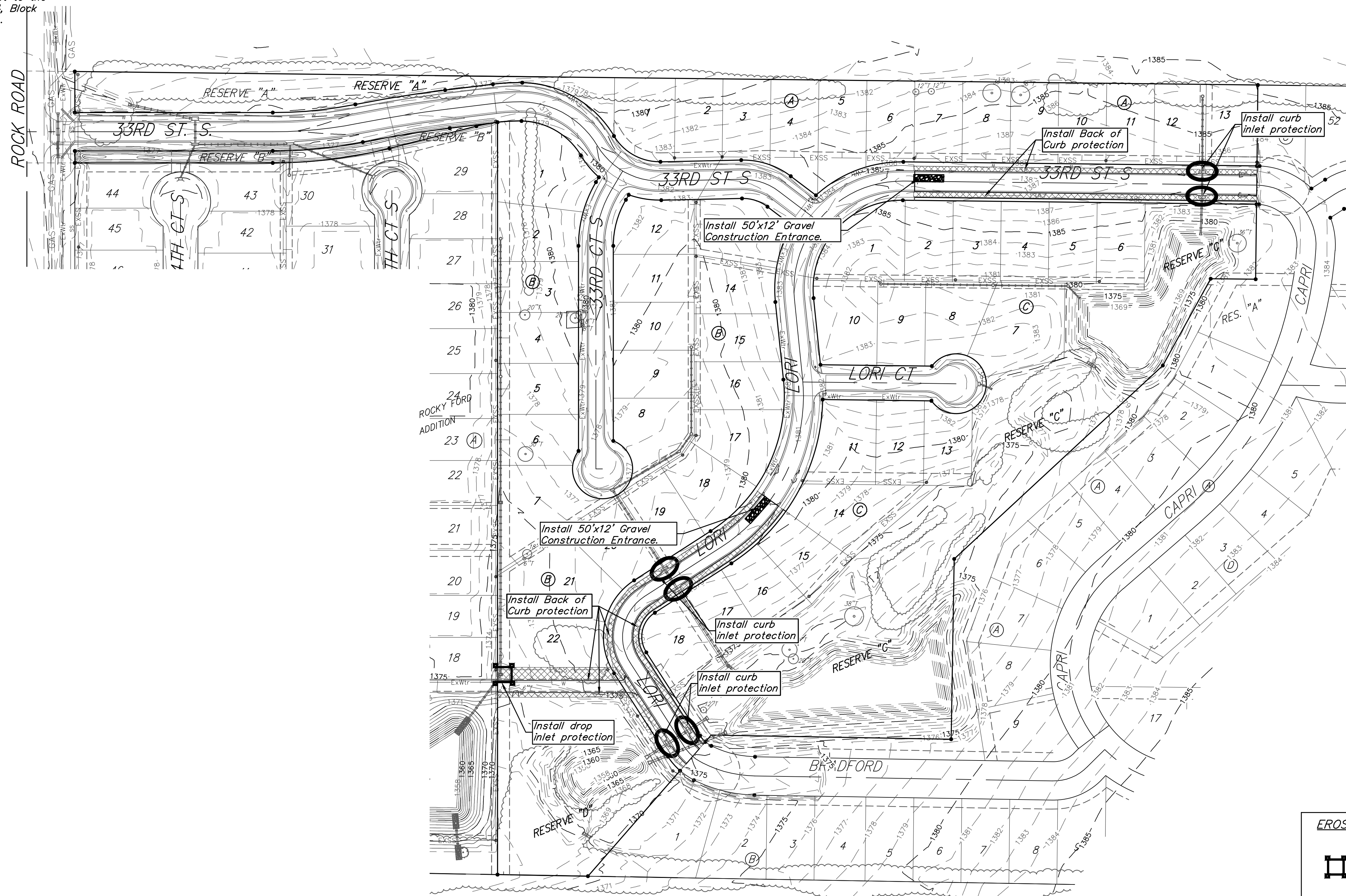
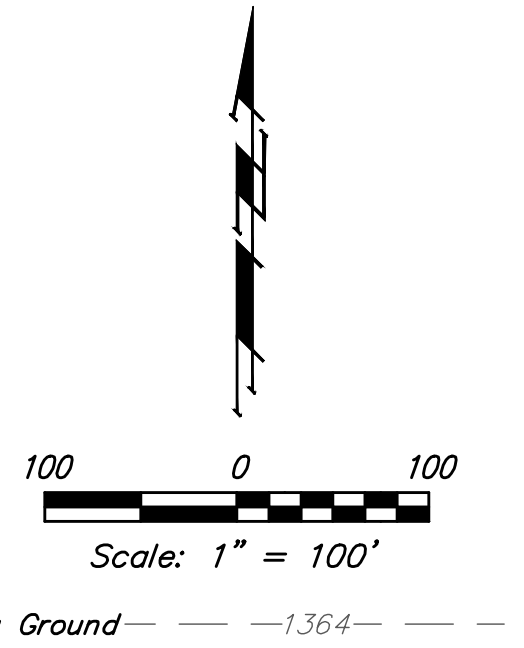


BENCHMARK:
 "□" in top of curb adjacent to the southwest corner of Lot 6, Block A, Rocky Ford 2nd Addition.
 Elev. = 1385.10 NAVD88

City of Wichita Benchmark Disk Adjacent to fire hydrant at east end of the south return, Lori & Lori Ct, NW Cor., Lot 11, Blk C, Rocky Ford 2nd Addition.
 Elev. = 1383.10 NAVD88

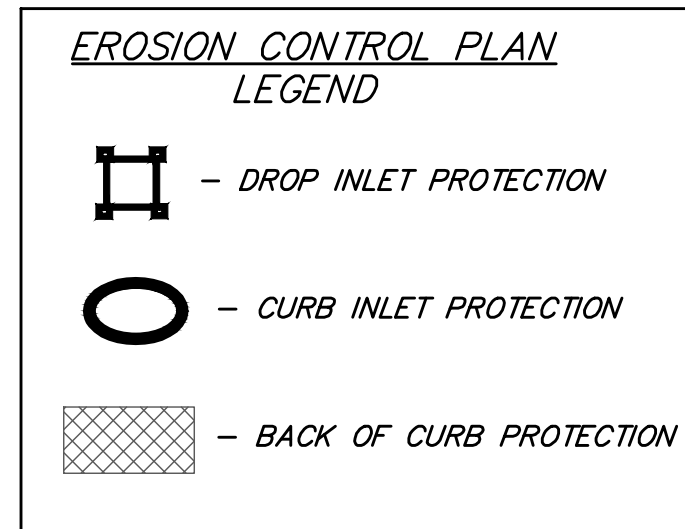
"□" in top of curb adjacent to the southwest corner of Lot 14, Block C, Rocky Ford 2nd Addition.
 Elev. = 1380.11 NAVD88



- NOTES:**
- Contractor shall make sure all erosion control is in place before project is accepted. This plan represents the minimum standard. Any additional erosion control measures shall be installed by the Contractor as needed.
 - Removal of Gravel Construction Entrance for pavement construction shall be included in bid item "Site Clearing & Restoration"
 - This Plan is Not To Be Used As A Comprehensive Grading Plan. All Spot Elevations Are Proposed & Subject To Change.
- All areas disturbed during construction shall be seeded, mulched, and fertilized as per Cover Sheet General Notes.

EROSION CONTROL MEASURE	INSTALL	MAINTAIN
BACK OF CURB PROTECTION (LF)	2,700	0
CONSTRUCTION ENTRANCE (EA)	2	0
DROP INLET BARRIER (EA)	1	0
CURB INLET BARRIER (EA)	6	0
MAINTAIN EROSION CONTROL BMP's (LS)	0	0

* ALL EXISTING BMPs INCLUDING CONSTRUCTION ENTRANCE, SEDIMENT BARRIERS, SILT FENCE, CUT-OFF TRENCH, AND EROSION CONTROL MAT SHALL BE MAINTAINED AND REPAIRED IF NECESSARY.



Baughman Rocky Ford 2nd Addition - Phase II
EROSION CONTROL
 Street Improvements

Baughman Company, P.A. 315 Ellis St. Wichita, KS 67211 P 316-262-7271 F 316-262-0149
 ENGINEERING | SURVEYING | PLANNING | LANDSCAPE ARCHITECTURE

PROJECT NUMBER 472-85431	DESIGN AEG	DRAWN JAK
REVISIONS:	APPROVED	DATE 5/28/19
	SCALE Noted	SHEET 11 OF 21