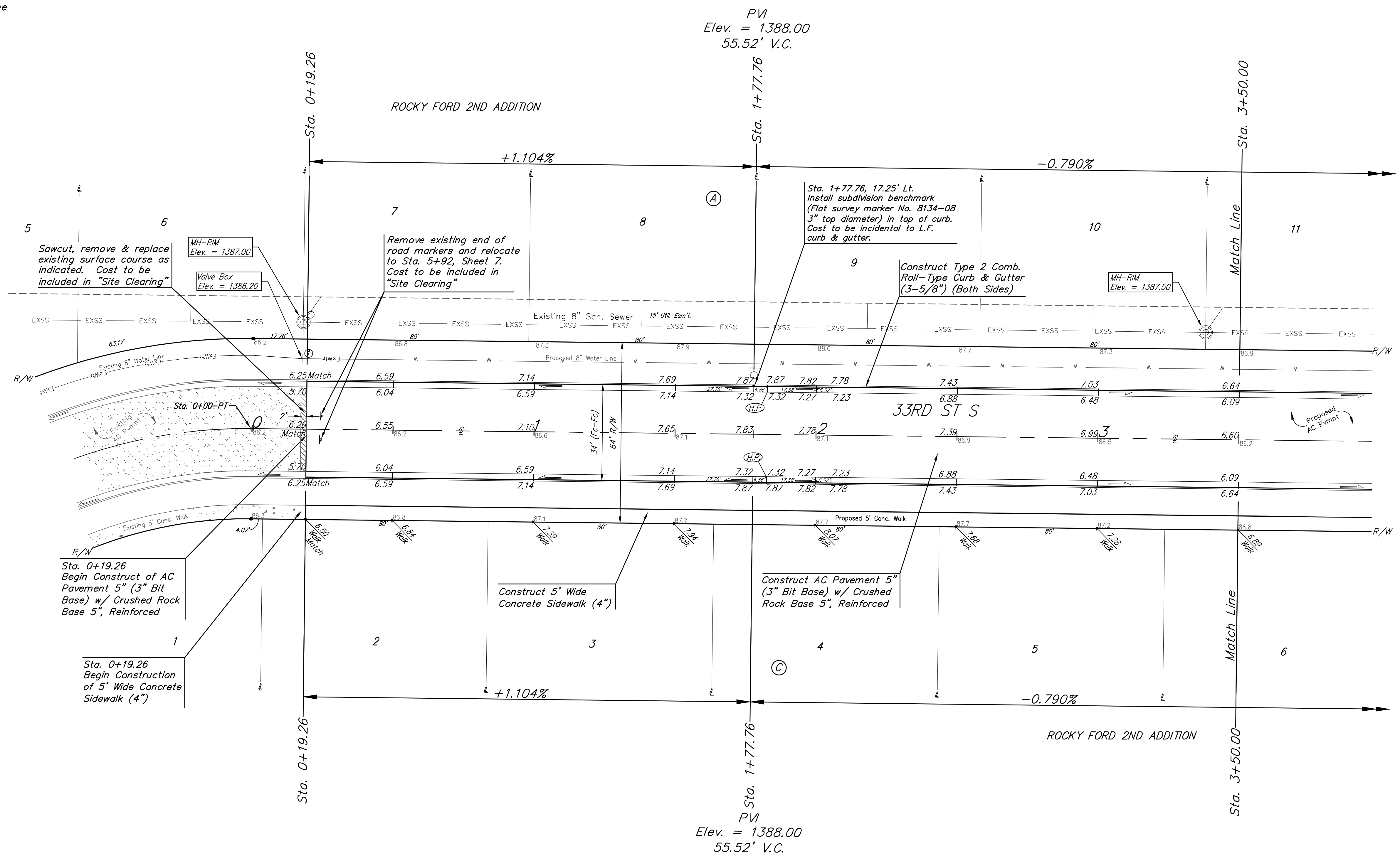
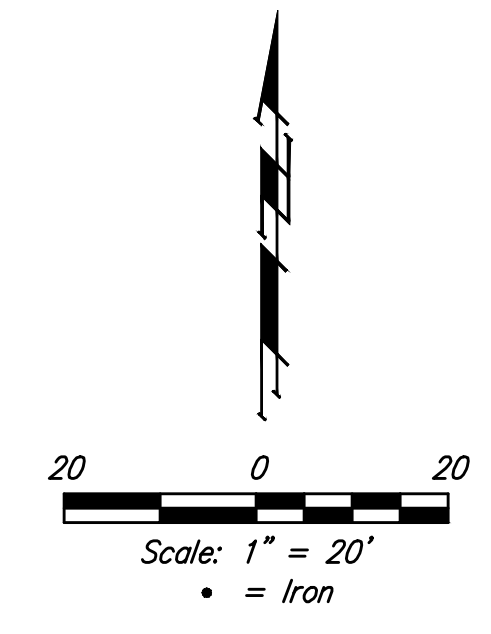


**BENCHMARK:**  
 "□" in top of curb adjacent to the southwest corner of Lot 6, Block A, Rocky Ford 2nd Addition.  
 Elev. = 1385.10 NAVD88

City of Wichita Benchmark Disk Adjacent to fire hydrant at east end of the south return, Lori & Lori Ct, NW Cor., Lot 11, Blk C, Rocky Ford 2nd Addition.  
 Elev. = 1383.10 NAVD88

"□" in top of curb adjacent to the southwest corner of Lot 14, Block C, Rocky Ford 2nd Addition.  
 Elev. = 1380.11 NAVD88



Subdivision Bench Marks		
Street & Station	Location Description	Elevation
33rd St S 1+77.76, 17.25' Lt.	Adjacent to Fire Hydrant at SE Corner of Lot 8, Block A	
Lori 2+71.30, 17.25' Lt.	Adjacent to Fire Hydrant at SE Corner of Lot 21, Block B	

VALVE LOCATION TABLE				
VALVE NUMBER	STREET	BASELINE STATION	OFFSET DISTANCE	OFFSET DIRECTION
1	33RD ST S	0+17.76	25'	Lt
2	33RD ST S	5+89.76	24'	Lt
3	LORI	0+19.98	23'	Lt
4	LORI	5+99.44	26'	Lt

Roll type curb & gutter to be constructed on the pavement on this sheet.  
 Top of curb elevation are given for full height curb.

	Rocky Ford 2nd Addition - Phase II	
	<b>33RD ST SOUTH</b> Sta. 0+17.76 to Sta. 3+50.00	
Baughman Company, P.A. 315 Ellis St. Wichita, KS 67211 P 316-262-7271 F 316-262-0149 ENGINEERING   SURVEYING   PLANNING   LANDSCAPE ARCHITECTURE		
PROJECT NUMBER <b>472-85431</b>	DESIGN AEG	DRAWN JAK
REVISIONS:	APPROVED 	DATE 5/28/19
		SCALE Noted SHEET
		<b>6 OF 21</b>