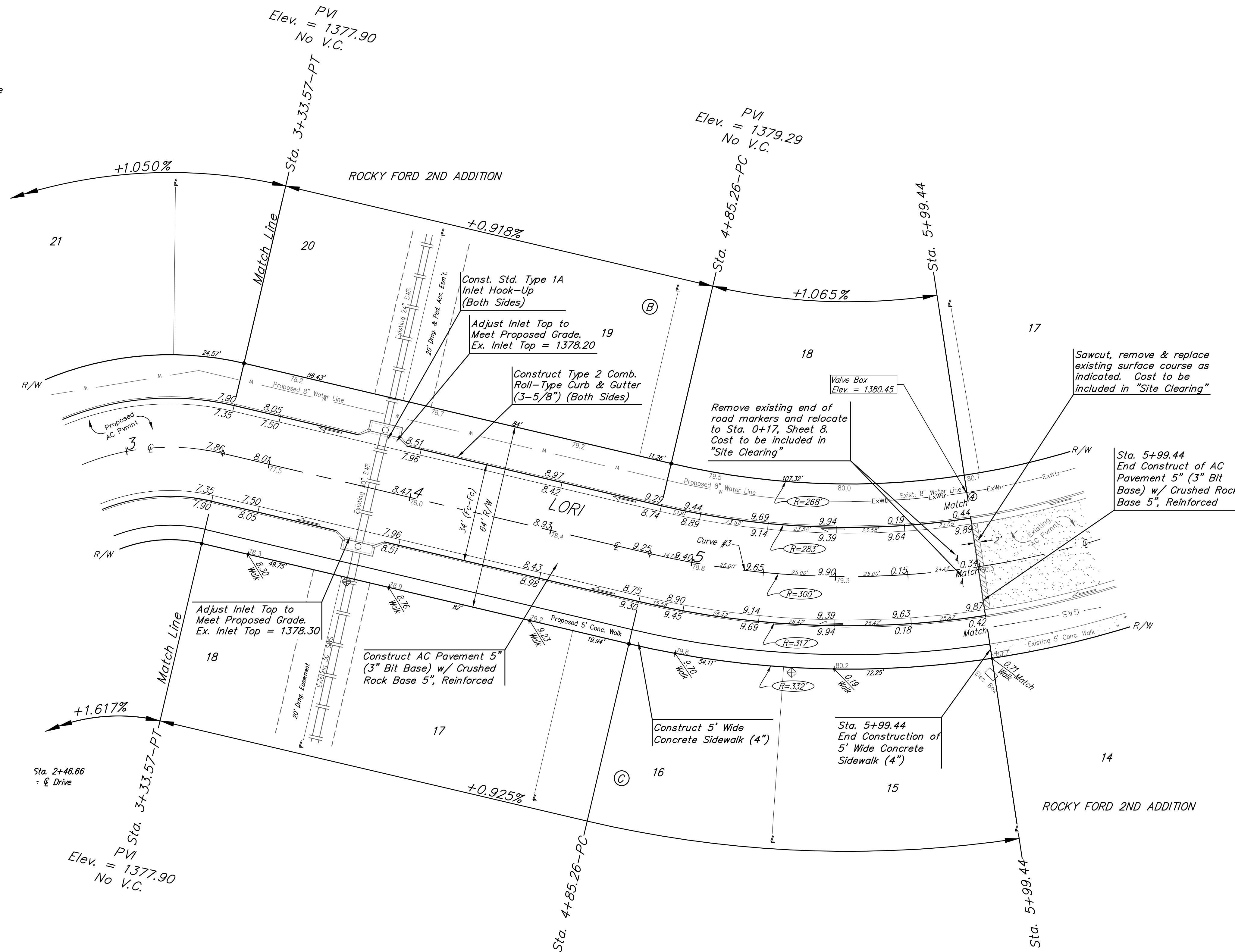
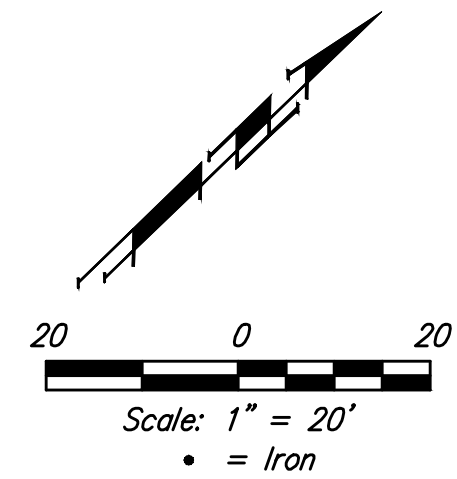


BENCHMARK:
 "□" in top of curb adjacent to the southwest corner of Lot 6, Block A, Rocky Ford 2nd Addition.
 Elev. = 1385.10 NAVD88

City of Wichita Benchmark Disk Adjacent to fire hydrant at east end of the south return, Lori & Lori Ct, NW Cor., Lot 11, Blk C, Rocky Ford 2nd Addition.
 Elev. = 1383.10 NAVD88

"□" in top of curb adjacent to the southwest corner of Lot 14, Block C, Rocky Ford 2nd Addition.
 Elev. = 1380.11 NAVD88



Curve #3
 Curve Data Based on Centerline
 Rad. = 300' Delta = 21°48'24" Tangent = 57.79'
 Arc = 114.18' L.C. = 113.49' Def./Pt. = 5.72955 Min.

Station	Arc	Face Chord Lengths		Defl.	Total Defl.
		8' Left	8' Right		
4+85.26	-	-	-	0°00'00"	0°00'00"
5+00.00	14.74'	13.51'	15.97'	1°24'27"	1°24'27"
5+25.00	25.00'	22.91'	27.08'	2°23'15"	3°47'42"
5+50.00	25.00'	22.91'	27.08'	2°23'14"	6°10'56"
5+75.00	25.00'	22.91'	27.08'	2°23'14"	8°34'10"
5+99.44	24.44'	22.40'	26.47'	2°20'02"	10°54'12"

Roll type curb & gutter to be constructed on the pavement on this sheet.
 Top of curb elevation are given for full height curb.

	Rocky Ford 2nd Addition - Phase II	
	LORI Sta. 3+33.37 to Sta. 5+99.44	
Baughman Company, P.A. 315 Ellis St. Wichita, KS 67211 P 316-262-7271 F 316-262-0149 ENGINEERING SURVEYING PLANNING LANDSCAPE ARCHITECTURE		
PROJECT NUMBER 472-85431	DESIGN AEG	DRAWN JAK
REVISIONS:	APPROVED DATE 5/28/19	SCALE Noted SHEET
		9 OF 21