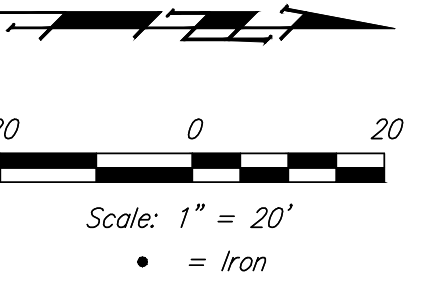
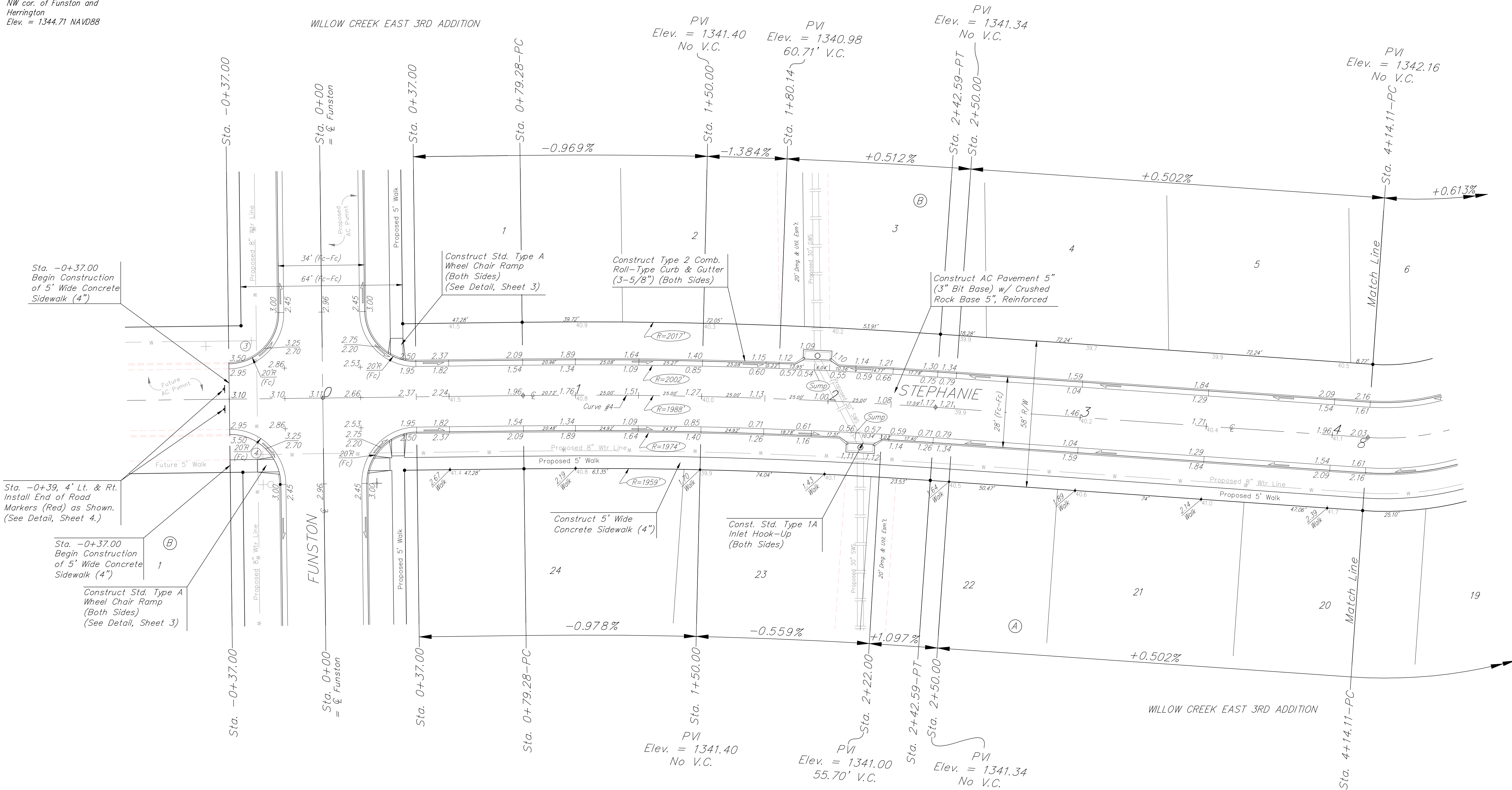


**BENCHMARKS:**  
 Brass benchmark disc in top of curb, east of wheelchair ramp NE cor. of Funston and Lynnrae Elev. = 1343.69 NAVD88

Brass benchmark disc in top of curb, north of wheelchair ramp NW cor. of Funston and Herrington Elev. = 1344.71 NAVD88



WILLOW CREEK EAST 3RD ADDITION



Sta. -0+37.00  
 Begin Construction of 5' Wide Concrete Sidewalk (4")

Sta. -0+39, 4' Lt. & Rt.  
 Install End of Road Markers (Red) as Shown. (See Detail, Sheet 4.)

Sta. -0+37.00  
 Begin Construction of 5' Wide Concrete Sidewalk (4")

Construct Std. Type A Wheel Chair Ramp (Both Sides) (See Detail, Sheet 3)

Construct Std. Type A Wheel Chair Ramp (Both Sides) (See Detail, Sheet 3)

Construct Type 2 Comb. Roll-Type Curb & Gutter (3-5/8") (Both Sides)

Construct AC Pavement 5" (3" Bit Base) w/ Crushed Rock Base 5", Reinforced

Construct 5' Wide Concrete Sidewalk (4")

Const. Std. Type 1A Inlet Hook-Up (Both Sides)

Curve #4  
 Curve Data Based on Centerline  
 Rad. = 1988' Delta = 4°2'24" Tangent = 81.70'  
 Arc = 163.31' L.C. = 163.26' Def./Fl. = 0.86461 Min.

Station	Arc	Face Chord Lengths		Defl.	Total Defl.
		8' Left	8' Right		
0+79.28	-	-	-	0'00"00"	0'00"00"
1+00.00	20.72'	20.95'	20.49'	0'17"55"	0'17"55"
1+25.00	25.00'	25.28'	24.72'	0'21"37"	0'39"32"
1+50.00	25.00'	25.28'	24.72'	0'21"37"	1'01"09"
1+75.00	25.00'	25.28'	24.72'	0'21"37"	1'22"46"
2+00.00	25.00'	25.28'	24.72'	0'21"37"	1'44"23"
2+25.00	25.00'	25.28'	24.72'	0'21"36"	2'05"59"
2+42.59	17.59'	17.78'	17.40'	0'15"13"	2'21"12"

Willow Creek East 3rd Addition - Phase I

**STEPHANIE**  
 Sta. 0+00 to Sta. 4+14.11

Baughman  
 ENGINEERING | SURVEYING | PLANNING | LANDSCAPE ARCHITECTURE

PROJECT NUMBER: 472-84765  
 REVISIONS:

DESIGN: DMV  
 APPROVED: [Signature]  
 DRAWN: JAK  
 DATE: 11/18

SCALE: Noted  
 SHEET: 10 OF 33

Roll type curb & gutter to be constructed on the pavement on this sheet.  
 Top of curb elevation are given for full height curb.