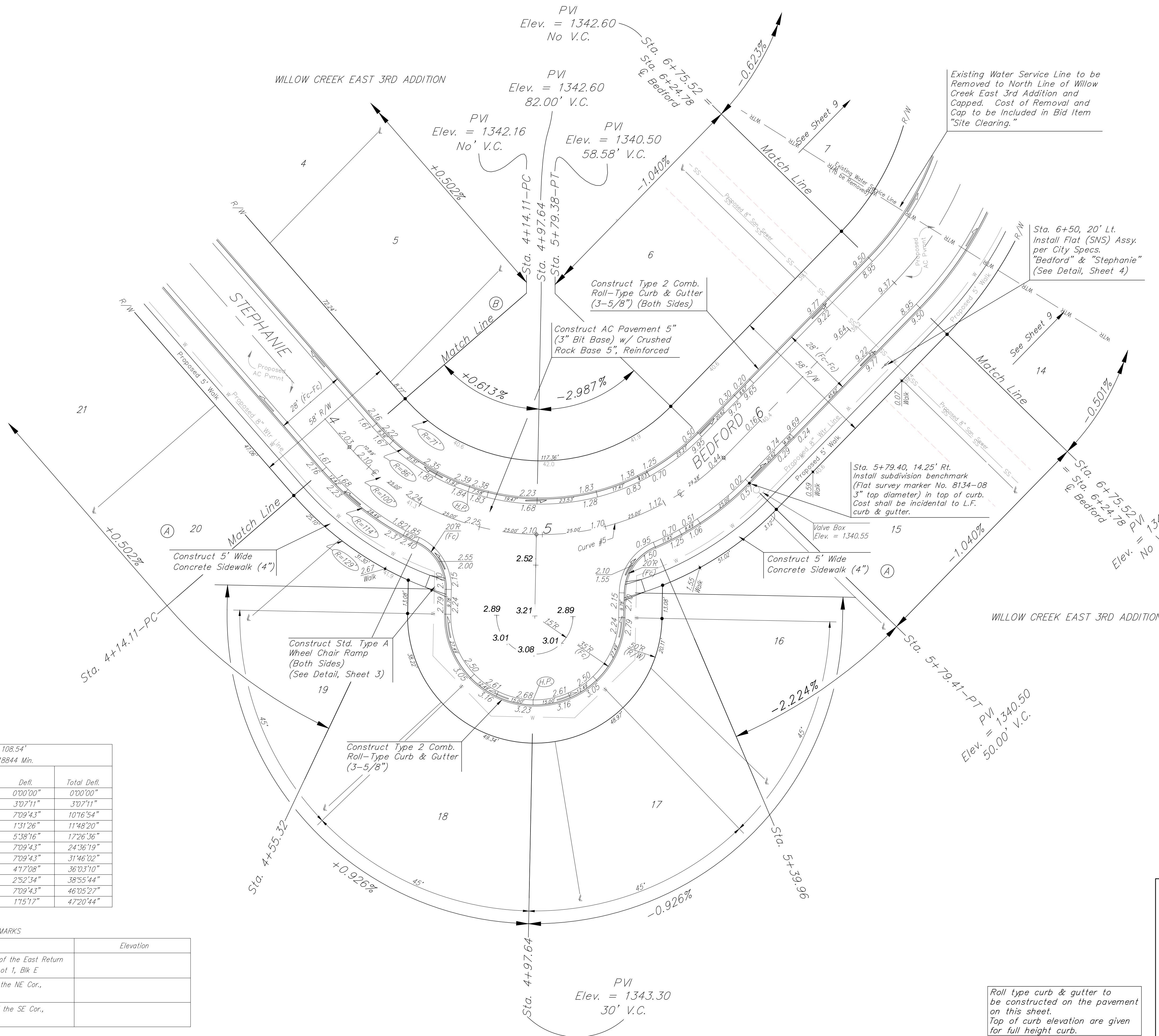
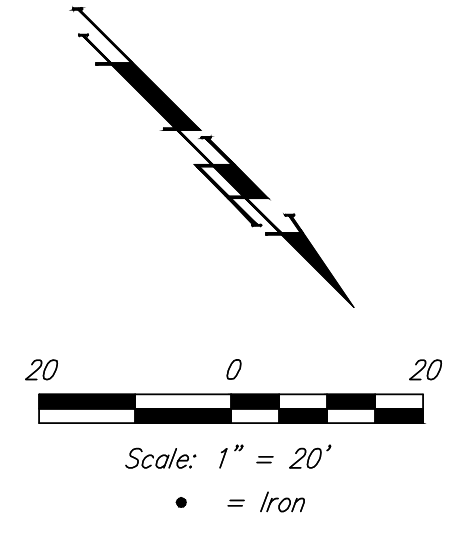


**BENCHMARKS:**  
 Brass benchmark disc in top of curb, east of wheelchair ramp NE cor. of Funston and Lynnrae  
 Elev. = 1343.69 NAVD88

Brass benchmark disc in top of curb, north of wheelchair ramp NW cor. of Funston and Herrington  
 Elev. = 1344.71 NAVD88



Curve #5  
 Curve Data Based on Centerline

Rad. = 100' Delta = 94°41'28" Tangent = 108.54'  
 Arc = 165.27' L.C. = 147.09' Def./Ft. = 17.18844 Min.

Station	Arc	Face Chord Lengths		Defl.	Total Defl.
		8' Left	8' Right		
4+14.11	-	-	-	0'00"00"	0'00"00"
4+25.00	10.89'	8.49'	13.28'	3'07"11"	3'07"11"
4+50.00	25.00'	19.45'	30.42'	7'09"43"	10'16"54"
4+55.32	5.32'	4.15'	6.49'	1'31"26"	11'48"20"
4+75.00	19.68'	15.33'	23.97'	5'38"16"	17'26"36"
5+00.00	25.00'	19.45'	30.42'	7'09"43"	24'36"19"
5+25.00	25.00'	19.45'	30.42'	7'09"43"	31'46"02"
5+39.96	14.96'	11.66'	18.23'	4'17"08"	36'03"10"
5+50.00	10.04'	7.83'	12.24'	2'52"34"	38'55"44"
5+75.00	25.00'	19.45'	30.42'	7'09"43"	46'05"27"
5+79.38	4.38'	3.42'	5.34'	1'15"17"	47'20"44"

SUBDIVISION BENCH MARKS

Street & Station	Location Description	Elevation
Funston 6+02.95, 17.25' Rt.	Adjacent to Fire Hydrant at North End of the East Return Funston & Stephanie, NW Cor., Lot 1, Blk E	
Bedford 3+55.71, 14.25' Lt.	Adjacent to Fire Hydrant East of the NE Cor., Lot 8, Blk A	
Stephanie 5+79.39, 14.25' Rt.	Adjacent to Fire Hydrant South of the SE Cor., Lot 15, Blk A	

Roll type curb & gutter to be constructed on the pavement on this sheet.  
 Top of curb elevation are given for full height curb.

**Baughman** **STEPHANIE**  
 Willow Creek East 3rd Addition - Phase I  
 Sta. 4+14.11 to Sta. 6+75.52

Baughman Company, P.A. 315 Ellis St. Wichita, KS 67211 P 316.862.7271 F 316.862.0140  
 ENGINEERING | SURVEYING | PLANNING | LANDSCAPE ARCHITECTURE

PROJECT NUMBER 472-84765	DESIGN DMV	DRAWN JAK
REVISIONS:	APPROVED	DATE 11/18
	SCALE Noted	SHEET 11 OF 33

E:\Projects\Willow Creek East 3rd Addition\_1704P283\Engineering\Phase I\STR\_1811E121\STR\_PLANS.dwg