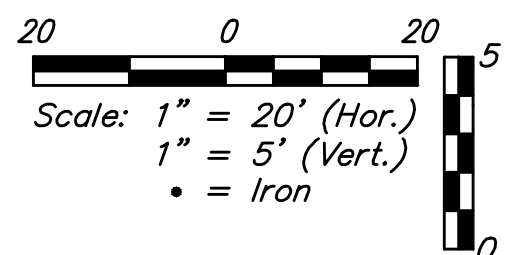
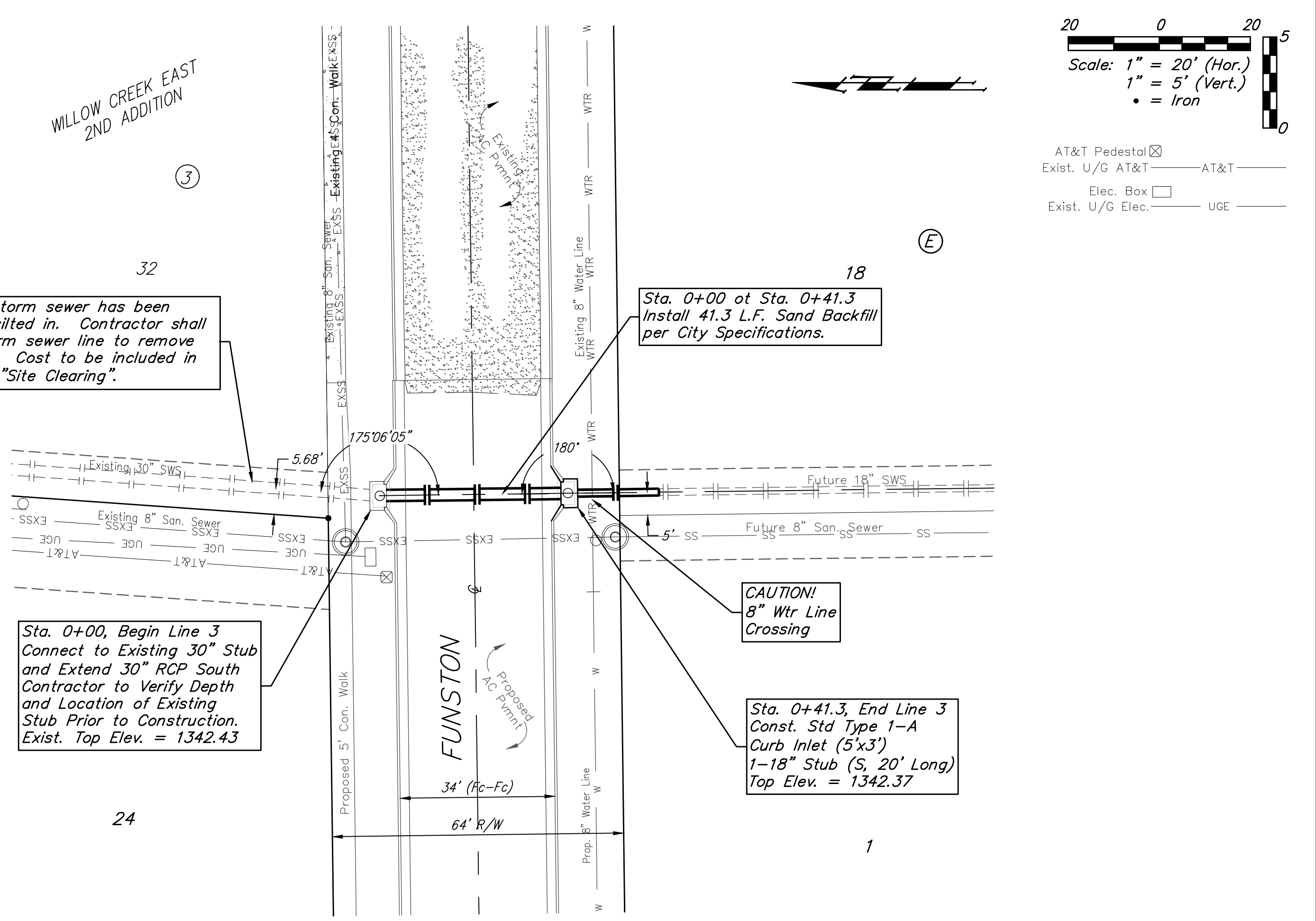
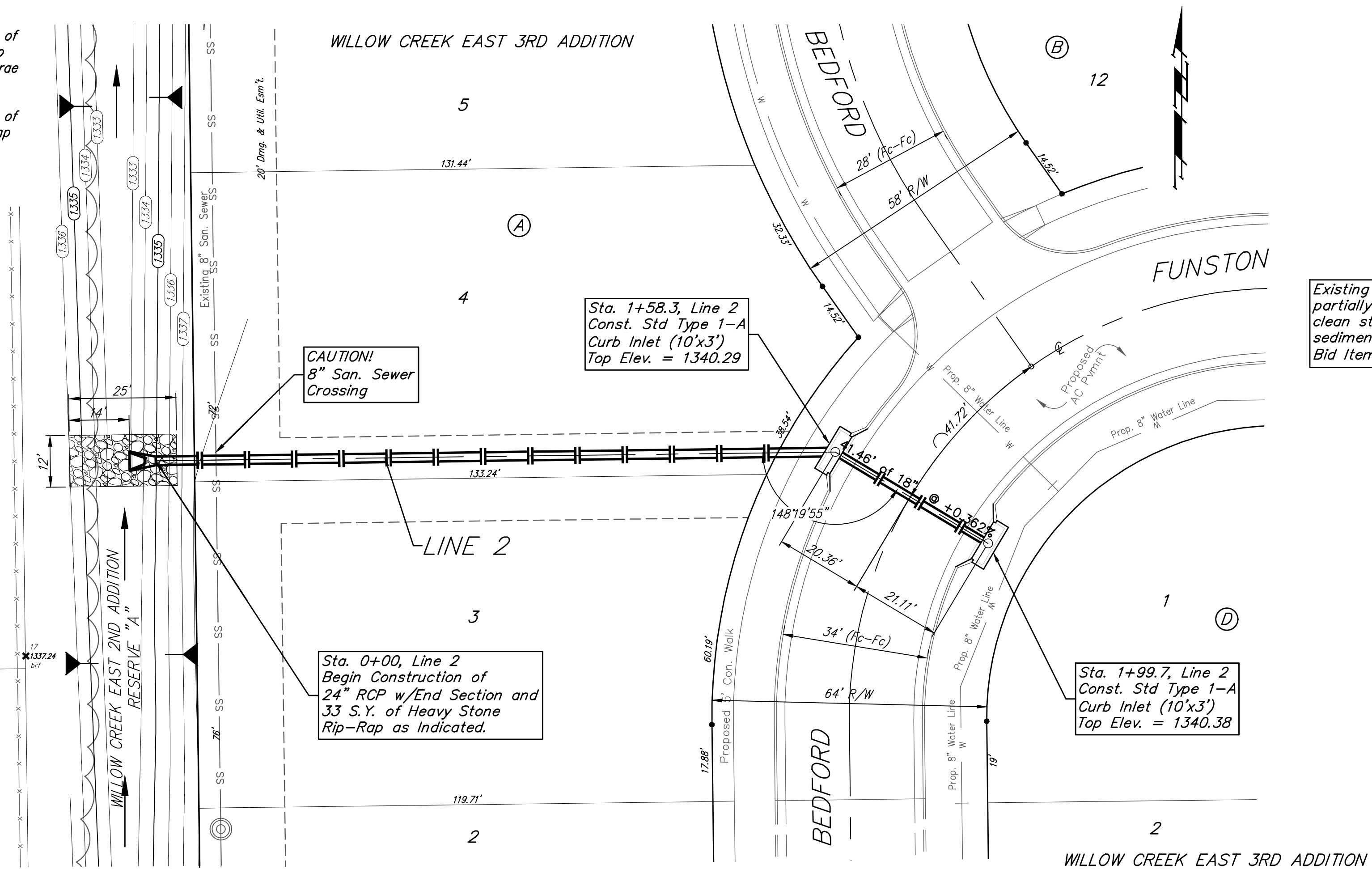
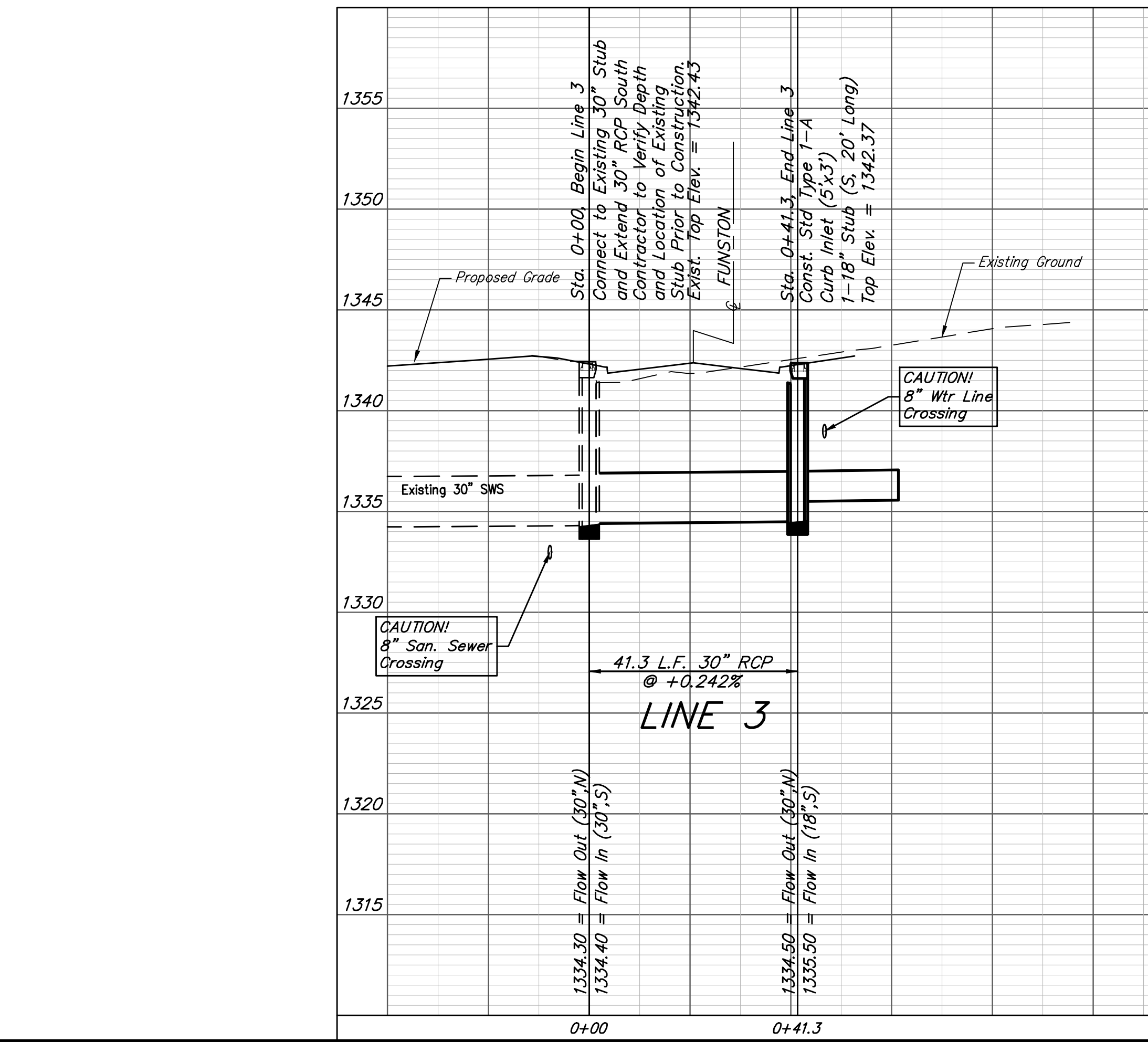
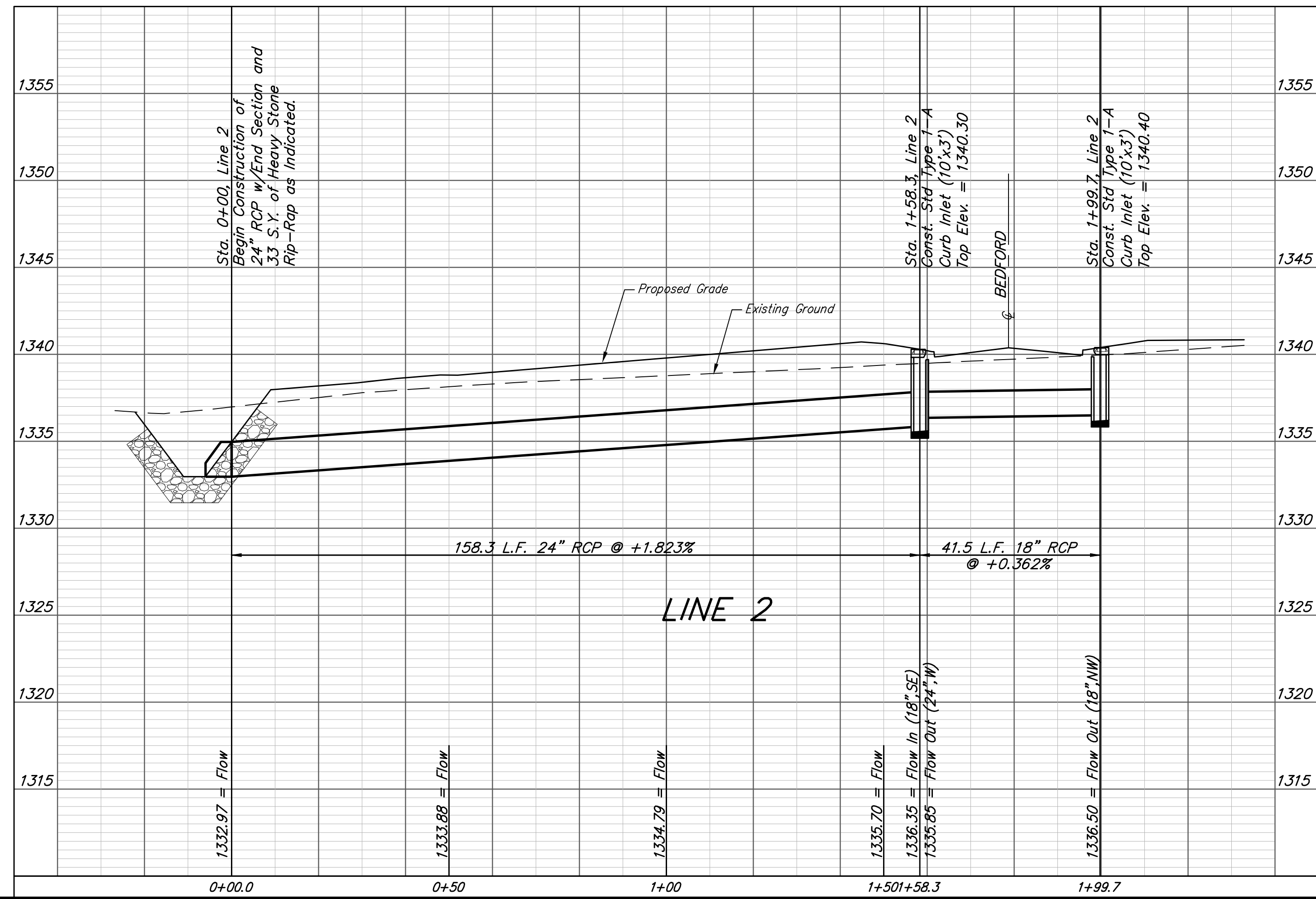


BENCHMARKS:
 Brass benchmark disc in top of curb, east of wheelchair ramp NE cor. of Funston and Lynnrae Elev. = 1343.69 NAVD88

Brass benchmark disc in top of curb, north of wheelchair ramp NW cor. of Funston and Herrington Elev. = 1344.71 NAVD88



AT&T Pedestal AT&T
 Exist. U/G AT&T AT&T
 Elec. Box UGE
 Exist. U/G Elec. UGE



Baughman Willow Creek East 3rd Addition - Phase 1
LINE 2 & LINE 3
 Storm Water Sewer Improvements

Baughman Company, P.A. 315 Ellis St. Wichita, KS 67211 P 316-262-7271 F 316-262-0149
 ENGINEERING | SURVEYING | PLANNING | LANDSCAPE ARCHITECTURE

PROJECT NUMBER: 472-84765 DESIGN: AEG DRAWN: JAK
 REVISIONS: APPROVED: DATE: 11/18
 SCALE: Noted
 SHEET: **15 OF 33**

E:\Projects\Willow Creek East 3rd Addition_1704\F283\Engineering\Phase 1\STR_1811-E121\SWW PLANS.dwg