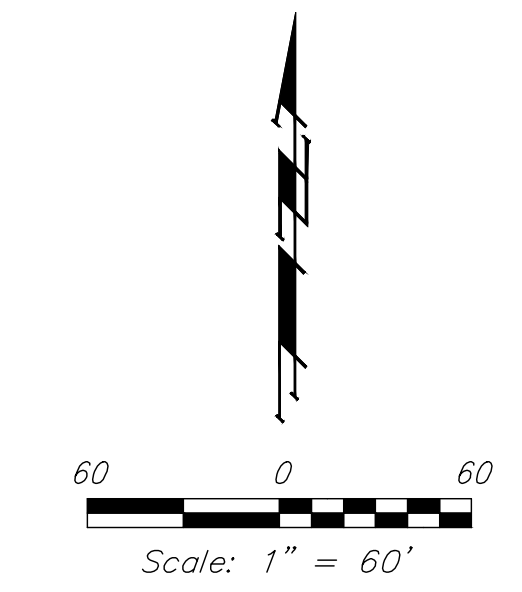
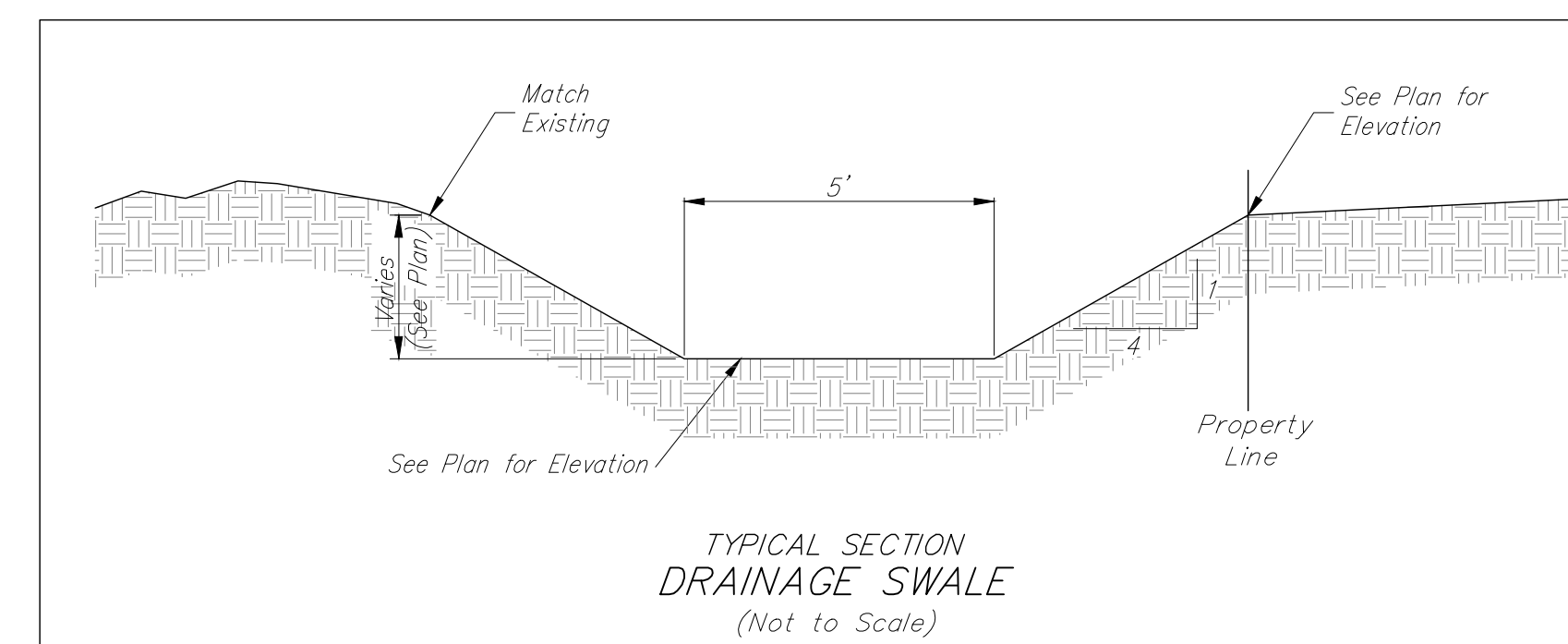
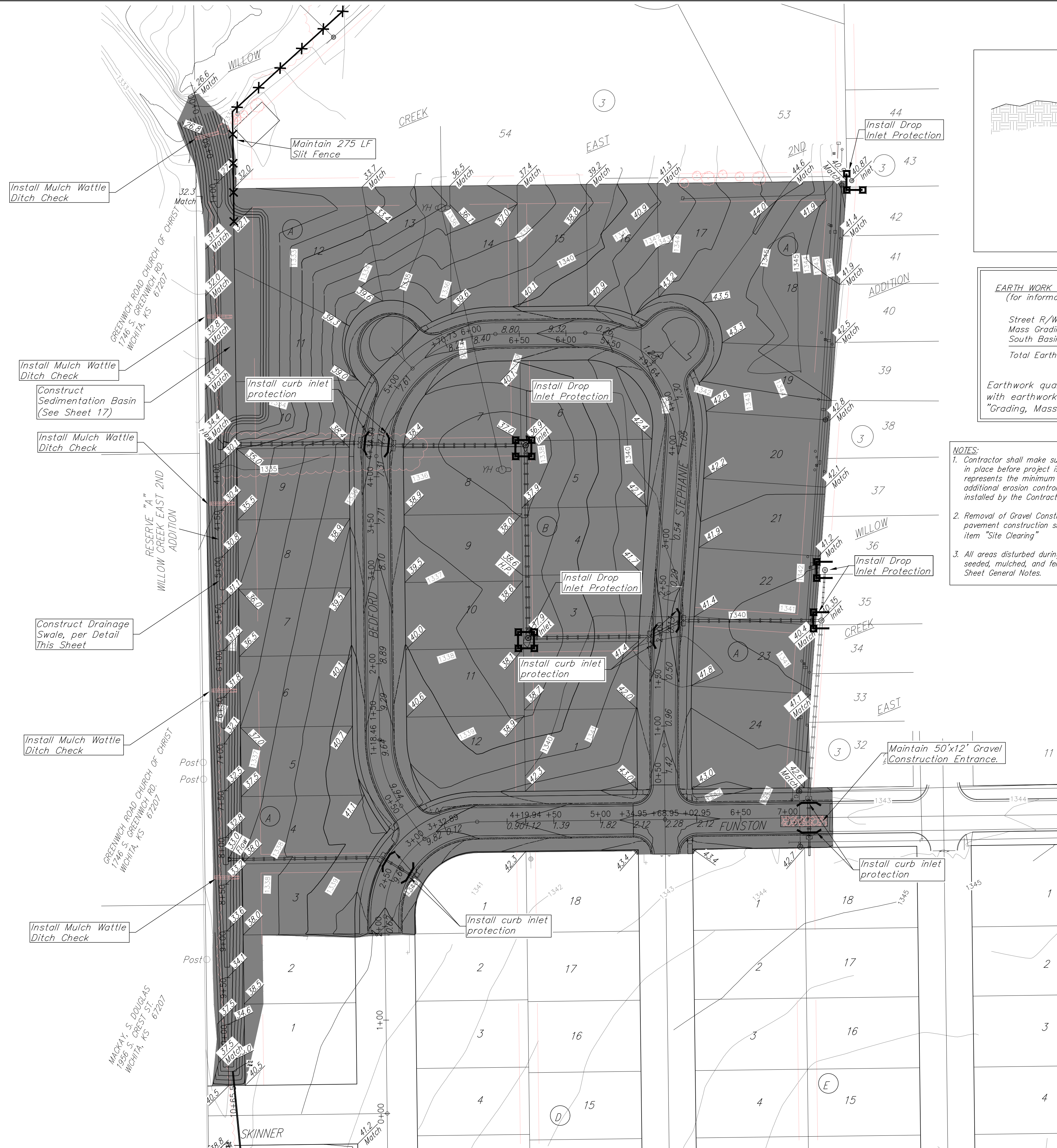


BENCHMARKS:
 Brass benchmark disc in top of curb, east of wheelchair ramp NE cor. of Funston and Lynnrae
 Elev. = 1343.69 NAVD88

Brass benchmark disc in top of curb, north of wheelchair ramp NW cor. of Funston and Herrington
 Elev. = 1344.71 NAVD88



Area to be graded
 (1350) Proposed Grade
 1350 Existing Grade

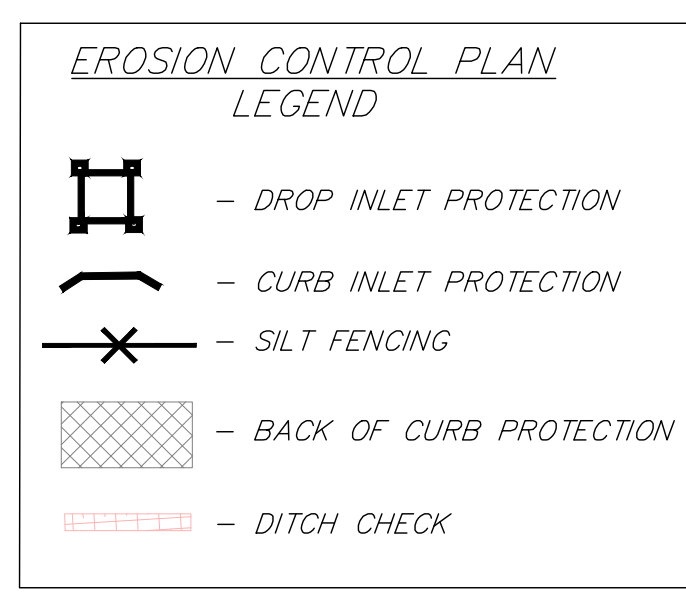
EARTH WORK TOTALS (Unadjusted)
 (for information only)

	Excavation	Compacted Fill
Street R/W's	1,037	4,237
Mass Grading	6,985	9,395
South Basin	2,496	89
Total Earthwork	10,518	13,722

Earthwork quantities are for reference only. All cost associated with earthwork shall be included in C.Y. "Excavation" & L.S. "Grading, Mass".

NOTE:
 Existing trees shall be trimmed/removed ONLY with approval of Developer. Prior to construction, an on-site meeting will occur with Contractor, Developer, and Engineer to determine limits of tree clearing. Trimming will only be permitted with chainsaws. Trees not in direct conflict with proposed new construction shall remain and be protected from damage. All removal/trimming shall be included in "Site Clearing".

- NOTES:**
- Contractor shall make sure all erosion control is in place before project is accepted. This plan represents the minimum standard. Any additional erosion control measures shall be installed by the Contractor as needed.
 - Removal of Gravel Construction Entrance for pavement construction shall be included in bid item "Site Clearing".
 - All areas disturbed during construction shall be seeded, mulched, and fertilized as per Cover Sheet General Notes.



EROSION CONTROL MEASURE	INSTALL	MAINTAIN
CONSTRUCTION ENTRANCE (EA)	0	1
SILT FENCE (LF)	0	275
DITCH CHECK (EA)	4	0
CURB INLET BARRIER (EA)	8	0
BACK OF CURB PROTECTION (LF)	3,711	0
DROP INLET PROTECTION (EA)	5	0
MAINTAIN EROSION CONTROL BMP'S (LS)	0	1

* ALL EXISTING BMP'S INCLUDING CONSTRUCTION ENTRANCE, SEDIMENT BARRIERS, SILT FENCE, CUT-OFF TRENCH, AND EROSION CONTROL MAT SHALL BE MAINTAINED AND REPAIRED IF NECESSARY.

- Mass Grading General Notes:**
- Earthwork quantities are unadjusted and are for reference only. All cost associated with mass grading shall be included in C.Y. "Excavation" and lump sum bid item "Mass Grading".
 - Contractor to strip top 4-6" of soil within street right-of-way and Reserve "A", Willow Creek 3rd Addition before mass grading and stockpile. Topsoil is to be spread over Reserve "A" prior to seeding.
 - Compaction of 95% Std. Proctor Density shall be obtained in all areas, moisture content of optimum to 4%.
 - It shall be the Contractor's responsibility to protect existing utilities during mass grading. Any damage done to these systems by Contractor or subcontractor shall be repaired at no additional cost to the project.
 - All areas disturbed during construction shall be seeded, mulched, and fertilized as per Cover Sheet General Notes.
 - Street elevations are top of dirt at centerline.
 - Grade points around cul-de-sacs are located at 1' behind back of proposed curb.

Baughman Engineering & Planning, P.A.
 Willow Creek East 3rd Addition - Phase I
MASS GRADING & EROSION CONTROL
 Street & Storm Water Sewer Improvements

PROJECT NUMBER: 472-84765
 DESIGN: AEG
 DRAWN: JAK
 APPROVED: DATE 11/18
 SCALE: Noted
 SHEET: 16 OF 33