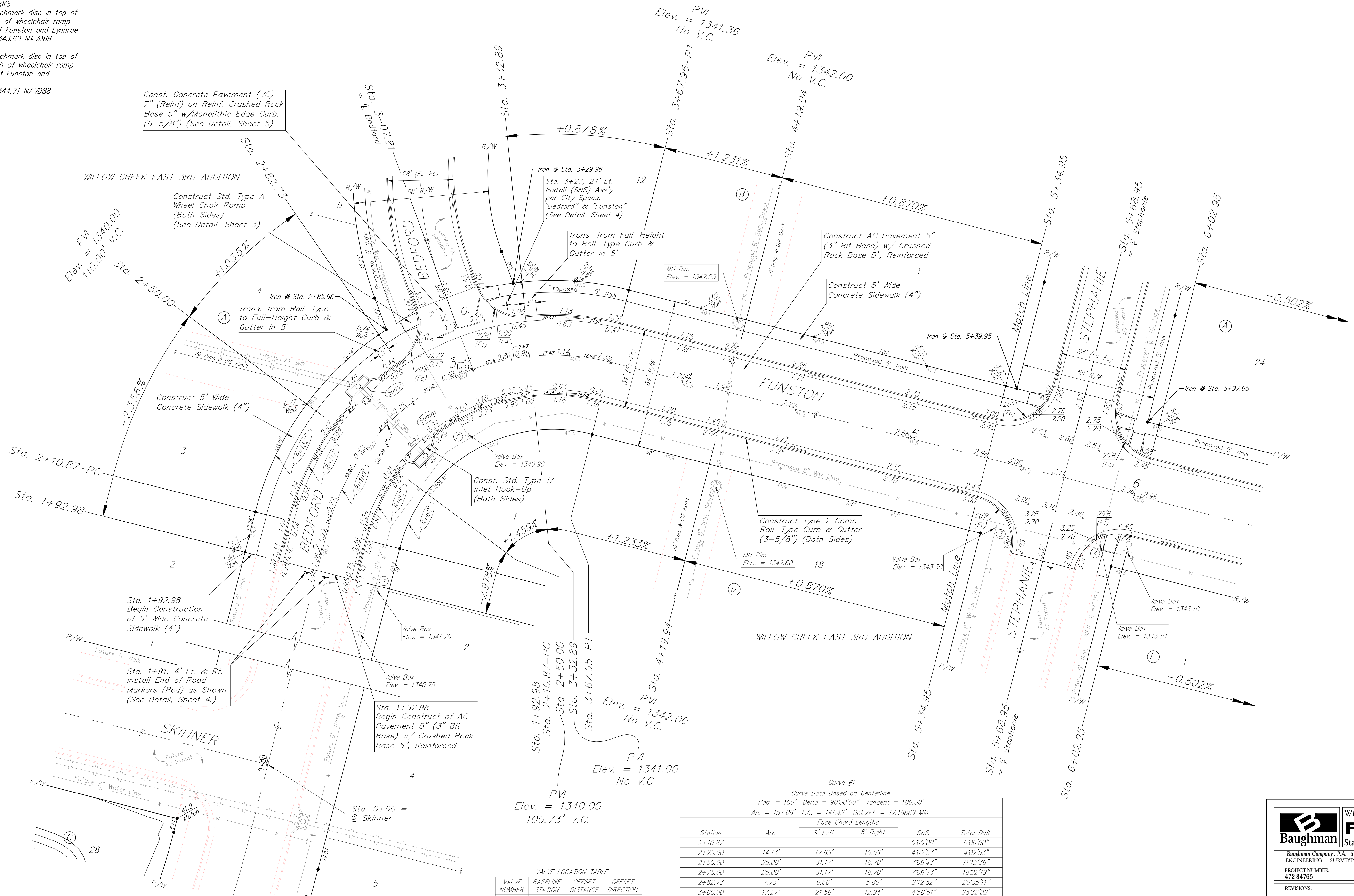
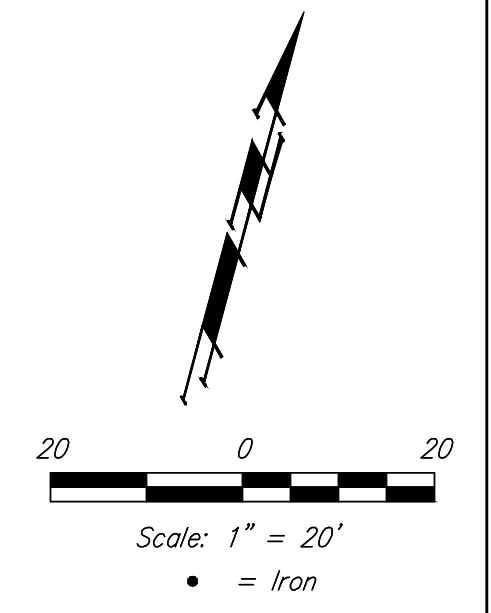


BENCHMARKS:
 Brass benchmark disc in top of curb, east of wheelchair ramp
 NE cor. of Funston and Lynnrae
 Elev. = 1343.69 NAVD88

Brass benchmark disc in top of curb, north of wheelchair ramp
 NW cor. of Funston and Herrington
 Elev. = 1344.71 NAVD88



VALVE LOCATION TABLE

VALVE NUMBER	BASELINE STATION	OFFSET DISTANCE	OFFSET DIRECTION
1	1+91.87	26'	Rt.
2	2+92.01	24.5'	Rt.
3	5+45.95	28'	Rt.
4	5+90.95	24'	Rt.

Curve #1
 Curve Data Based on Centerline
 Rad. = 100' Delta = 90°00'00" Tangent = 100.00'
 Arc = 157.08' L.C. = 141.42' Def. Ft. = 17.18869 Min.

Station	Arc	Face Chord Lengths		Defl.	Total Defl.
		8' Left	8' Right		
2+10.87	-	-	-	0°00'00"	0°00'00"
2+25.00	14.13'	17.65'	10.59'	4°02'53"	4°02'53"
2+50.00	25.00'	31.17'	18.70'	7°09'43"	11°12'36"
2+75.00	25.00'	31.17'	18.70'	7°09'43"	18°22'19"
2+82.73	7.73'	9.66'	5.80'	2°12'52"	20°35'11"
3+00.00	17.27'	21.56'	12.94'	4°56'51"	25°32'02"
3+25.00	25.00'	31.17'	18.70'	7°09'43"	32°41'45"
3+32.60	7.60'	9.50'	5.70'	2°10'38"	34°52'23"
3+50.00	17.40'	21.72'	13.03'	4°59'05"	39°51'28"
3+67.95	17.95'	22.41'	13.44'	5°08'32"	45°00'00"

Roll type curb & gutter to be constructed on the pavement on this sheet.
 Top of curb elevation are given for full height curb.

Baughman FUNSTON
 Willow Creek East 3rd Addition - Phase I
 Sta. 1+92.98 to Sta. 5+34.95

Baughman Company, P.A. 315 Ellis St. Wichita, KS 67211 P 316-262-7271 F 316-262-0149
 ENGINEERING | SURVEYING | PLANNING | LANDSCAPE ARCHITECTURE

PROJECT NUMBER 472-84765	DESIGN DMV	DRAWN JAK
REVISIONS:	APPROVED	DATE 11/18
	SCALE Noted	SHEET 6 OF 33

E:\Projects\Willow Creek East 3rd Addition_1704\283\Engineering\Phase I\STR_18-11-E121\STR PLANS.dwg