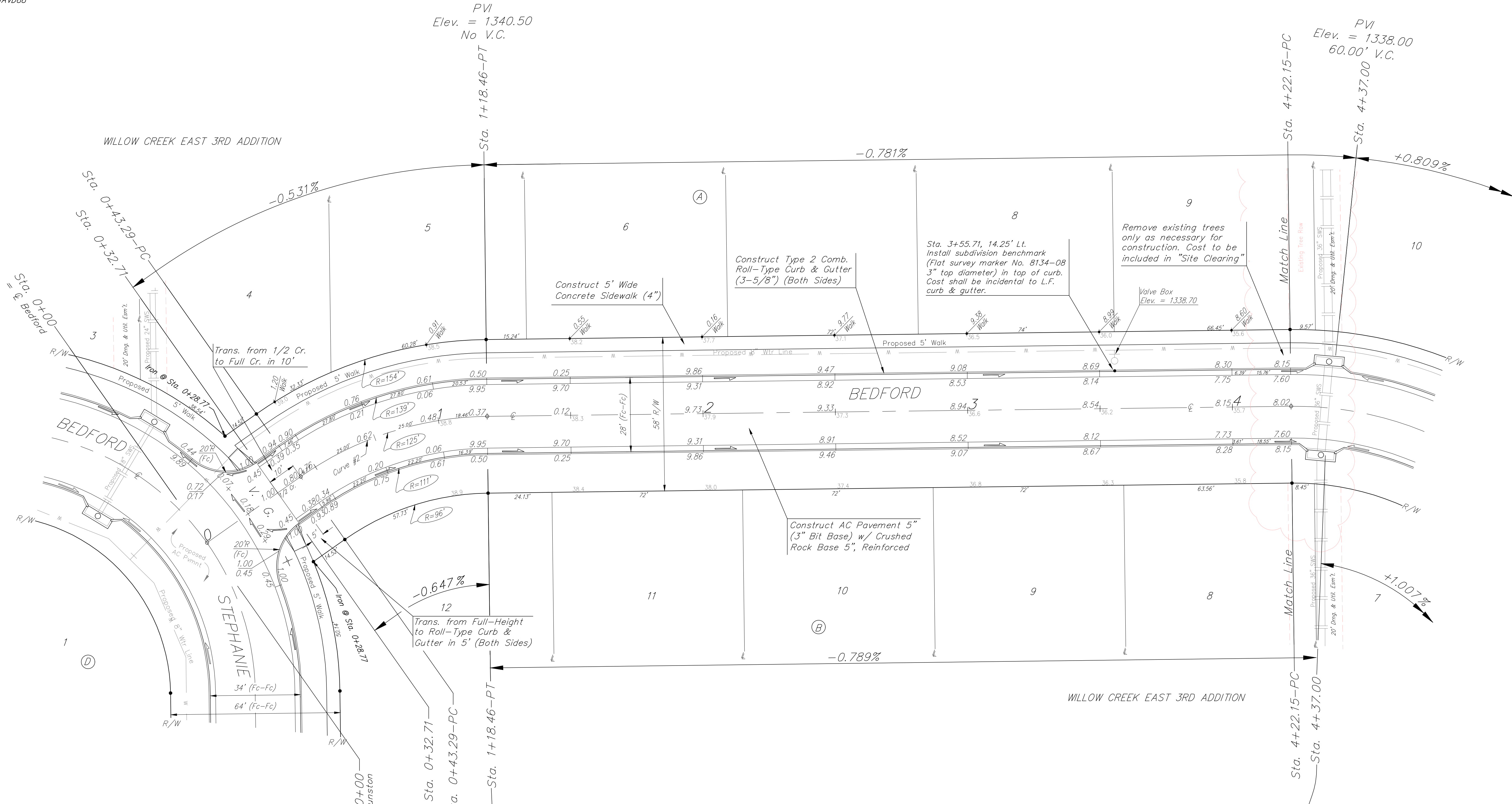
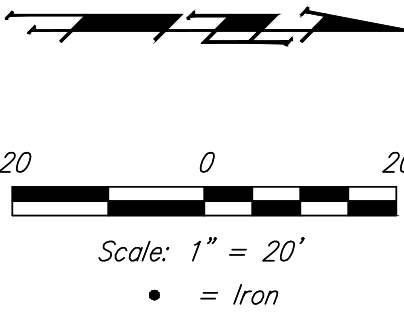


BENCHMARKS:
 Brass benchmark disc in top of curb, east of wheelchair ramp
 NE cor. of Funston and Lynnrae
 Elev. = 1343.69 NAVD88

Brass benchmark disc in top of curb, north of wheelchair ramp
 NW cor. of Funston and Herrington
 Elev. = 1344.71 NAVD88



PVI
 Elev. = 1340.50
 No V.C.
 Sta. 1+18.46-PT

PVI
 Elev. = 1338.00
 60.00' V.C.
 Sta. 4+22.15-PC
 Sta. 4+37.00

PVI
 Elev. = 1340.50
 No V.C.
 Sta. 0+32.71
 Sta. 0+43.29-PC
 Sta. 1+18.46-PT

PVI
 Elev. = 1342.60
 60' V.C.

Curve #2
 Curve Data Based on Centerline
 Rad. = 125' Delta = 34°27'23" Tangent = 38.76'
 Arc = 75.17' L.C. = 74.04' Def./ft. = 13.75139 Min.

Station	Arc	Face Chord Lengths		Defl.	Total Defl.
		8' Left	8' Right		
0+43.29	-	-	-	0'00"00"	0'00"00"
0+50.00	6.71'	7.89'	5.53'	1'32"16"	1'32"16"
0+75.00	25.00'	29.35'	20.57'	5'43"47"	7'16"03"
1+00.00	25.00'	29.35'	20.57'	5'43"47"	12'59"50"
1+18.46	18.46'	21.69'	15.20'	4'13"51"	17'13"41"

Roll type curb & gutter to be constructed on the pavement on this sheet.
 Top of curb elevation are given for full height curb.

BEDFORD Willow Creek East 3rd Addition - Phase I Sta. 0+00 to Sta. 4+22.15	
Baughman Company, P.A. 315 Ellis St. Wichita, KS 67211 P 316-262-7271 F 316-262-0149 ENGINEERING SURVEYING PLANNING LANDSCAPE ARCHITECTURE	
PROJECT NUMBER 472-84765	DESIGN DRAWN DMV JAK APPROVED DATE DATE 11/18
REVISIONS:	SCALE Noted SHEET 8 OF 33