

STREET IMPROVEMENTS FOR
MT. VERNON & HILLSIDE INTERSECTION
PAVING PLANS

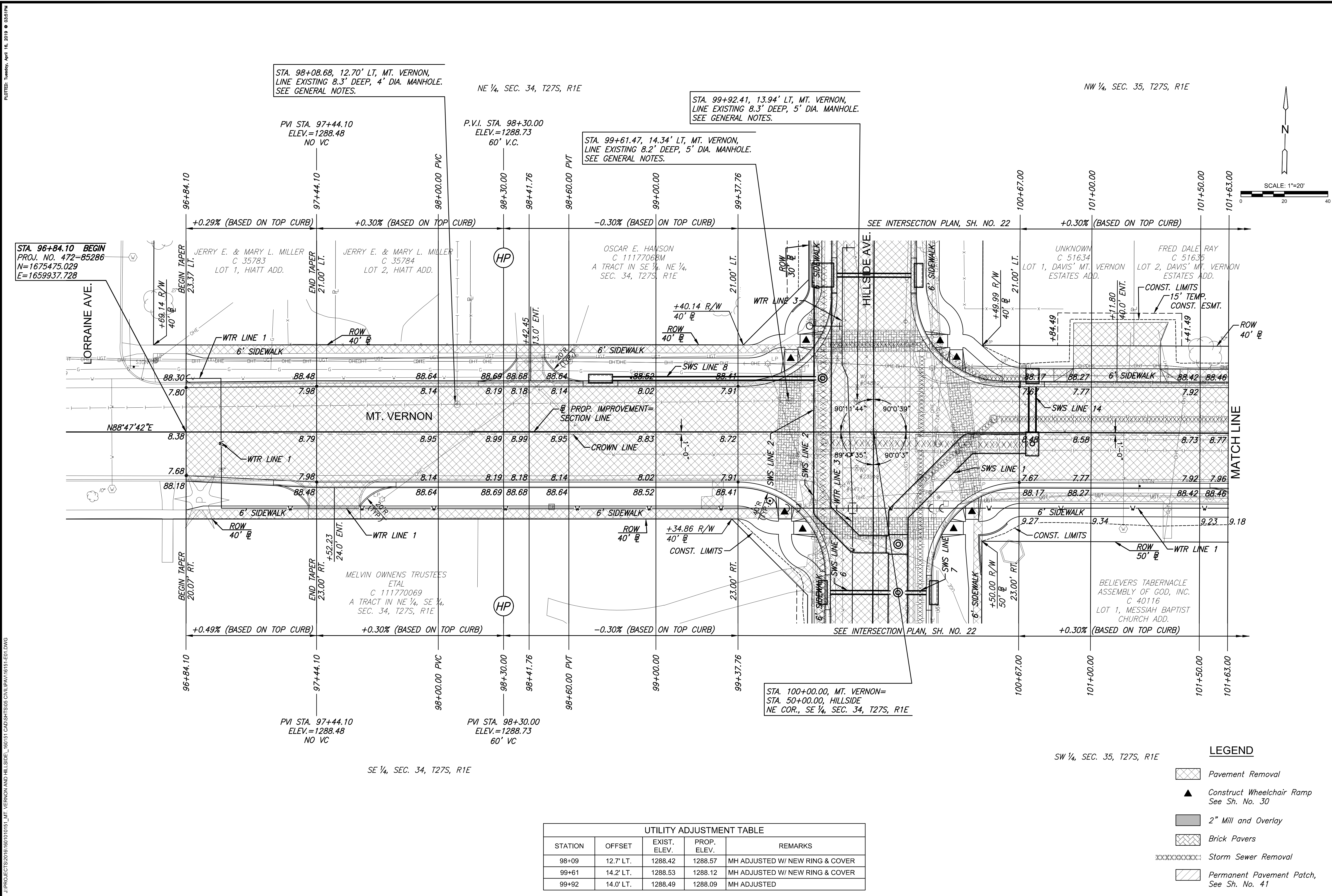
©2019 MKEC Engineering All Rights Reserved
www.mkec.com
These drawings and their contents, including, but not limited to, all concepts, designs, & ideas are the exclusive property of MKEC Engineering (MKEC), and may not be used or reproduced in any way without the express consent of MKEC.

MT. VERNON PAVING PLAN

PROJECT NO.	472-85286	
DATE	DATE	
SCALE	1"=20'	
DESIGNED	DRAWN	CHECKED
DMU	WNJ	JRA

NO.	REVISION	DATE

SHEET NO.
5 OF 101



STA. 98+08.68, 12.70' LT, MT. VERNON,
LINE EXISTING 8.3' DEEP, 4' DIA. MANHOLE.
SEE GENERAL NOTES.

STA. 99+92.41, 13.94' LT, MT. VERNON,
LINE EXISTING 8.3' DEEP, 5' DIA. MANHOLE.
SEE GENERAL NOTES.

STA. 99+61.47, 14.34' LT, MT. VERNON,
LINE EXISTING 8.2' DEEP, 5' DIA. MANHOLE.
SEE GENERAL NOTES.

STA. 100+00.00, MT. VERNON=
STA. 50+00.00, HILLSIDE
NE COR., SE 1/4, SEC. 34, T27S, R1E

UTILITY ADJUSTMENT TABLE				
STATION	OFFSET	EXIST. ELEV.	PROP. ELEV.	REMARKS
98+09	12.7' LT.	1288.42	1288.57	MH ADJUSTED W/ NEW RING & COVER
99+61	14.2' LT.	1288.53	1288.12	MH ADJUSTED W/ NEW RING & COVER
99+92	14.0' LT.	1288.49	1288.09	MH ADJUSTED

- LEGEND**
- Pavement Removal
 - Construct Wheelchair Ramp See Sh. No. 30
 - 2" Mill and Overlay
 - Brick Pavers
 - Storm Sewer Removal
 - Permanent Pavement Patch, See Sh. No. 41

PLOTTED: Tuesday, April 16, 2019 @ 03:51PM
 J:\PROJECTS\2019\1601010451_Mt. VERNON AND HILLSIDE_160151 CAD\SHOTS\06 CIVIL\PAV\161514-01.DWG