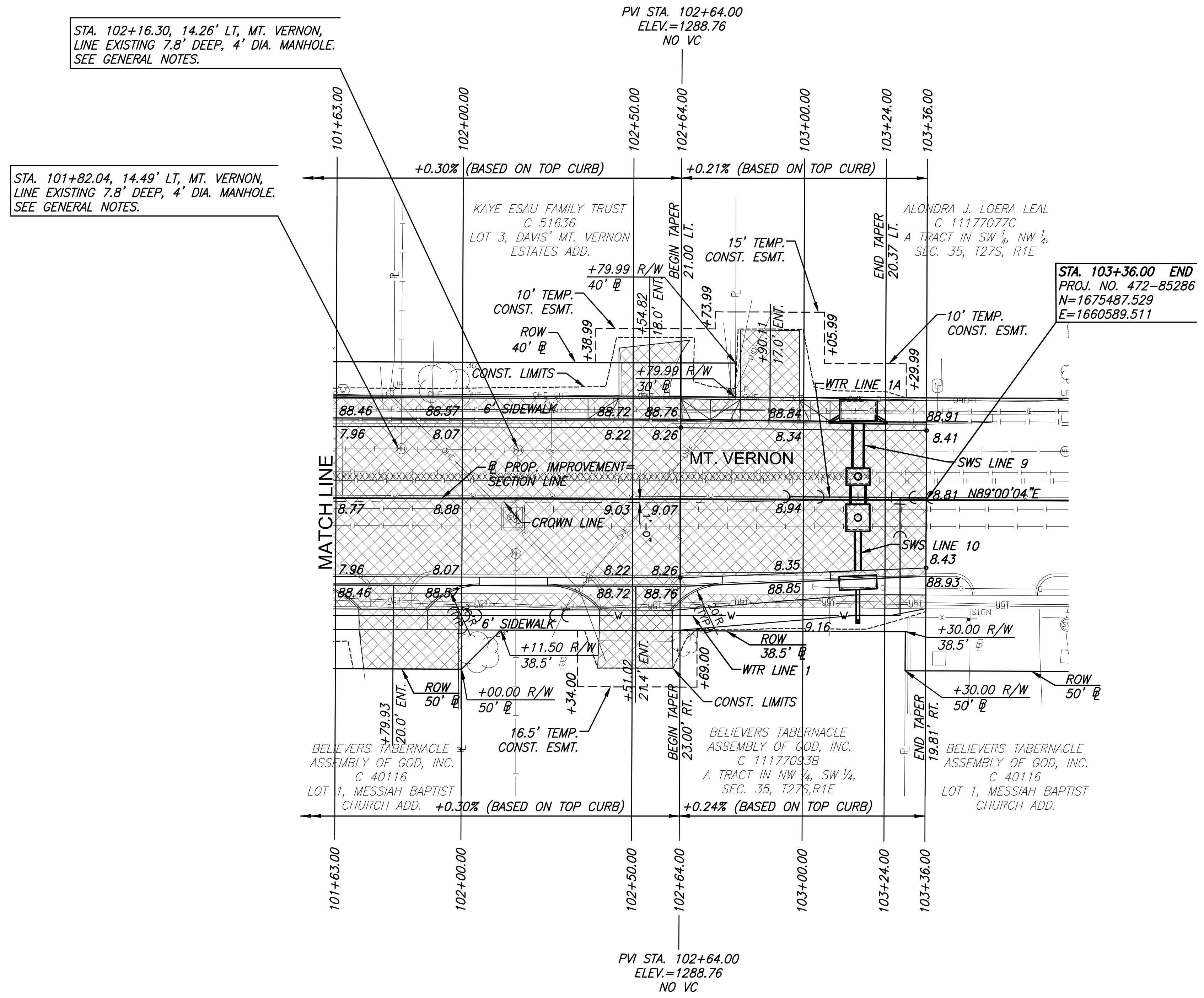
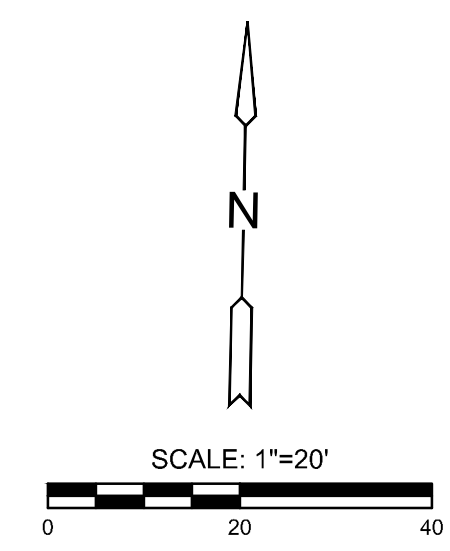


PLOTTED: Tuesday, April 30, 2019 @ 02:46PM

J:\PROJECTS\2019\1601010151_MT_VERNON AND HILLSIDE_160151_CADD\SHS\06_CIVIL\PAV\161514E02.DWG





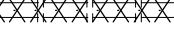
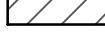
STREET IMPROVEMENTS FOR
MT. VERNON & HILLSIDE INTERSECTION
PAVING PLANS

NW 1/4, SEC. 35, T27S, R1E



SW 1/4, SEC. 35, T27S, R1E

UTILITY ADJUSTMENT TABLE				
STATION	OFFSET	EXIST. ELEV.	PROP. ELEV.	REMARKS
101+82	14.4' LT.	1288.37	1288.36	MH ADJUSTED
102+16	14.4' LT.	1288.42	1288.47	MH ADJUSTED
102+16	5.4' RT.	1288.60	1288.79	MH ADJUSTED W/ NEW RING & COVER
102+16	16.3' RT.	1288.40	1288.47	MH ADJUSTED

- LEGEND**
-  Pavement Removal
 -  Construct Wheelchair Ramp
See Sh. No. 30
 -  2" Mill and Overlay
 -  Brick Pavers
 -  Storm Sewer Removal
 -  Permanent Pavement Patch,
See Sh. No. 41

©2019 MKEC Engineering All Rights Reserved
www.mkec.com
These drawings and their contents, including, but not limited to, all concepts, designs, & ideas are the exclusive property of MKEC Engineering (MKEC), and may not be used or reproduced in any way without the express consent of MKEC.

MT. VERNON PAVING PLAN

PROJECT NO.	472-85286	
DATE	DATE	
SCALE	1"=20'	
DESIGNED	DRAWN	CHECKED
DMU	WNJ	JRA
NO.	REVISION	DATE

SHEET NO.
6 OF 101