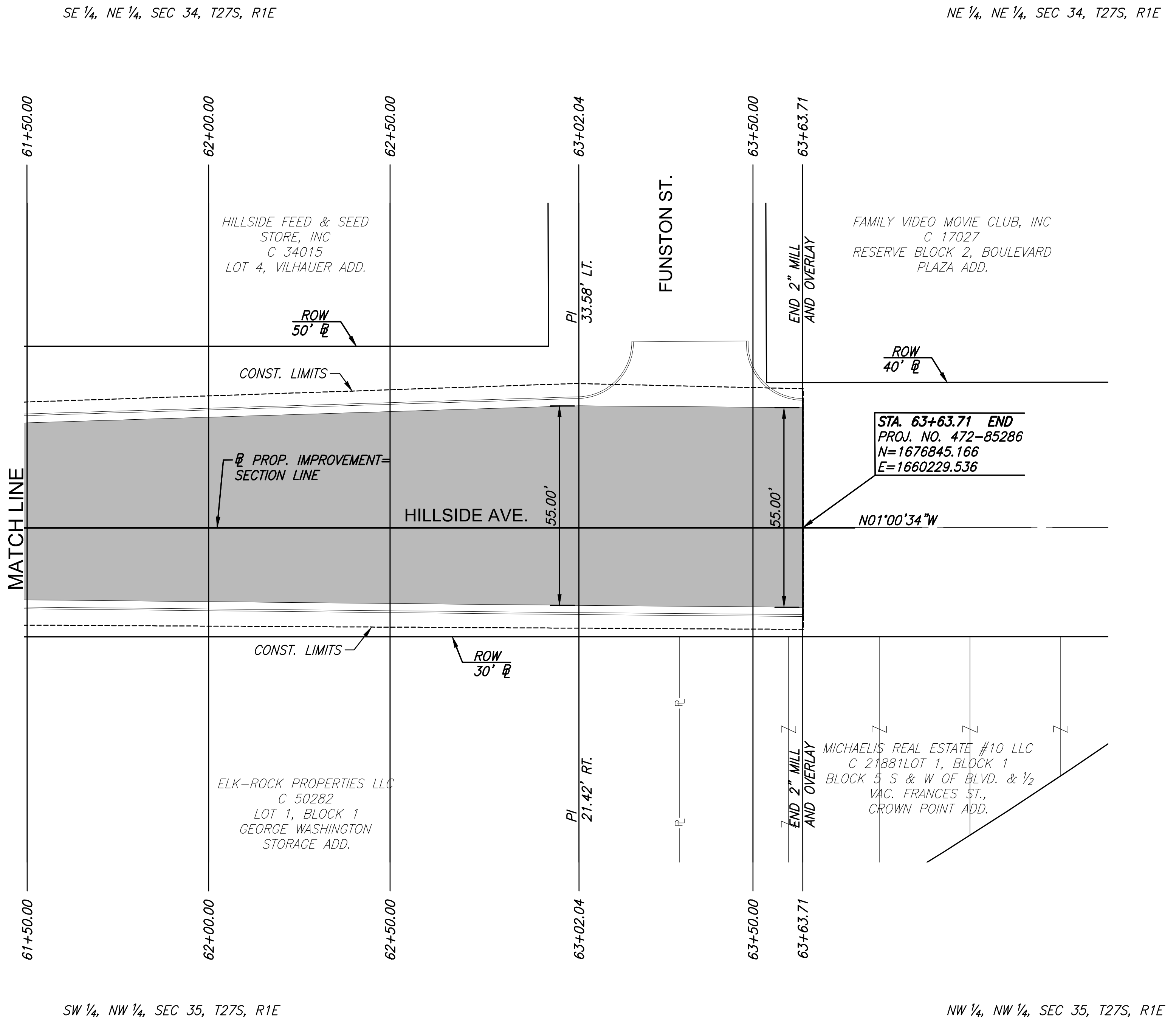


PLOTTED: Tuesday, April 16, 2019 @ 04:53PM

J:\PROJECTS\2018\1601010151\_MT. VERNON AND HILLSIDE\_160151\_CADD\SHS\06\_CIVIL\PAV\161514E06.DWG



STREET IMPROVEMENTS FOR  
**MT. VERNON & HILLSIDE INTERSECTION**  
PAVING PLANS

©2019  
MKEC Engineering  
All Rights Reserved  
www.mkec.com  
These drawings and their contents, including, but not limited to, all concepts, designs, & fees are the exclusive property of MKEC Engineering (MKEC), and may not be used or reproduced in any way without the express consent of MKEC.

**HILLSIDE AVE.  
PAVING PLAN**

PROJECT NO.	472-85286	
DATE	DATE	
SCALE	1"=20'	
DESIGNED	DRAWN	CHECKED
DMU	WNJ	JRA

**LEGEND**

- Pavement Removal
- Construct Wheelchair Ramp  
See Sh. No. 30
- 2" Mill and Overlay
- Brick Pavers
- Storm Sewer Removal
- Permanent Pavement Patch,  
See Sh. No. 41

NO.	REVISION	DATE

SHEET NO.  
**10 OF 101**