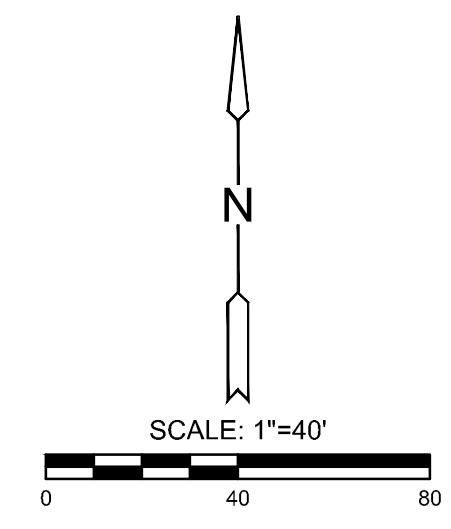
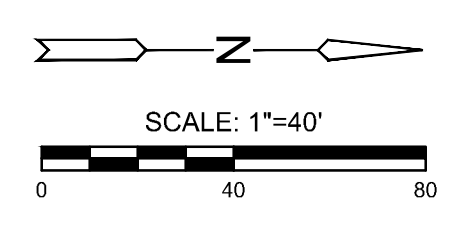
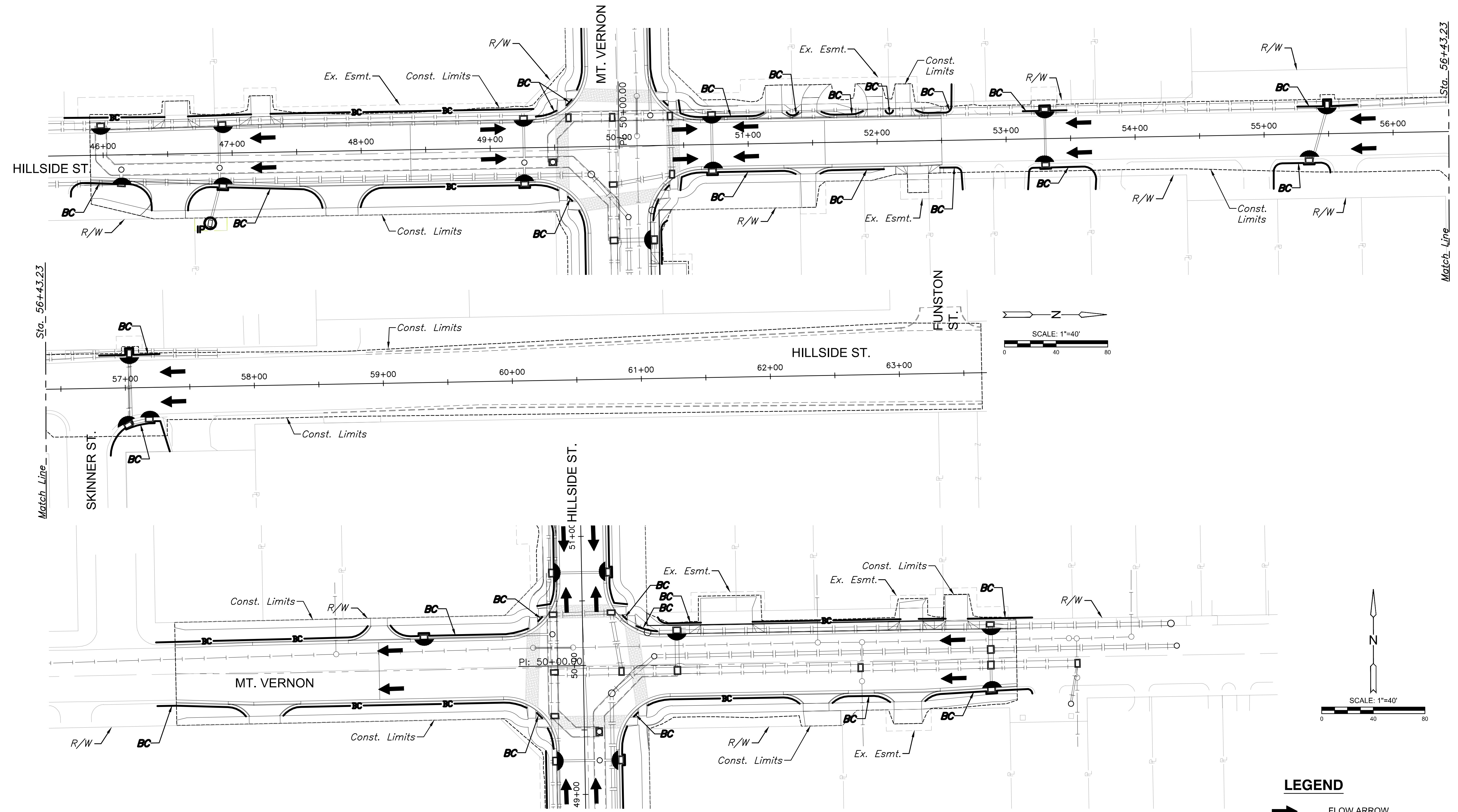


J:\PROJECTS\2019\1601010151_Mt. Vernon and Hillside_CAD\SHOTS\05 CIVIL\GRD\16151.FP01.DWG
 PLOTTED: Tuesday, April 16, 2019 @ 04:02PM



EROSION CONTROL/SEEDING NOTES

THIS PROJECT WILL DISTURB 3.2 ACRES.

REFER TO CITY OF WICHITA STANDARDS FOR BMP INSTALLATION, INSPECTION AND MAINTENANCE DETAILS AND SPECIFICATIONS.

COST FOR EACH EROSION AND SEDIMENT CONTROL ITEM SHALL INCLUDE MAINTENANCE, INSPECTION AND EVENTUAL REMOVAL. BESIDES KEEPING EACH DEVICE IN WORKING ORDER, MAINTENANCE SHALL INCLUDE, AT A MINIMUM, SEDIMENT REMOVAL BEFORE 50% OF THE DEVICE'S CAPACITY IS REACHED.

CONTRACTOR SHALL ADJUST EROSION AND SEDIMENT CONTROL PLANS TO CONFORM TO ACTUAL CONSTRUCTION OPERATIONS. ALL CHANGES TO PLAN SHALL BE APPROVED BY THE CITY.

STABILIZED ENTRANCES SHALL BE PROVIDED AS DIRECTED BY THE CITY. 4 TOTAL ENTRANCES ARE ANTICIPATED ON THE PROJECT.

STOCKPILING OF EXCAVATED MATERIAL ON THE PROJECT SITE IS GENERALLY PROHIBITED. SMALL AND INTERIM STOCK PILES NOT IMMEDIATELY HAULED OFF-SITE SHOULD BE ENCLOSED AND PROTECTED WITH SILT BARRIER AROUND THE ENTIRE CIRCUMFERENCE OF THE STOCK PILE. INSTALLING AND MAINTAINING THIS FENCE SHALL BE CONSIDERED SUBSIDIARY TO THE BID ITEM "EROSION CONTROL BMP (SILT BARRIER)".

EROSION CONTROL DEVICES WILL NEED TO BE INSTALLED AS APPLICABLE FOR THE APPROPRIATE CONSTRUCTION PHASE. CONTRACTOR SHALL ADJUST EROSION AND SEDIMENT CONTROL PLAN TO CONFORM TO ACTUAL CONSTRUCTION OPERATIONS. ONCE INSTALLED, THE DEVICES SHALL REMAIN IN-PLACE AND CONTINUE TO BE MAINTAINED UNTIL NO LONGER NECESSARY AS DETERMINED BY THE CITY.

ALL 4:1 SLOPES AND STEEPER WILL REQUIRE EROSION CONTROL MAT OR SOD. REFER TO ROADSIDE IMPROVEMENT PLANS.

ALL AREAS DISTURBED BY CONSTRUCTION THAT ARE ADJACENT TO DEVELOPED PROPERTIES SHALL BE RESTORED WITH SOD TO MATCH EXISTING TURF TYPE. RESTORATION OF DISTURBED AREAS SHALL INCLUDE BUT NOT BE LIMITED TO, TOP SOIL PREPARATION AND SODDING. ALL SODDING WORK SHALL BE IN ACCORDANCE WITH CITY STANDARD SPECIFICATIONS AND THE CITY ADMINISTRATIVE REGULATION NO. AR6.5, WHICH GOVERNS CLEANUP AND RESTORATION OR REPLACEMENT FOLLOWING CONSTRUCTION. THE "RECAPITULATION OF QUANTITIES" SHOWS THE ESTIMATED SQUARE YARDS OF SODDING, WITH A BID ITEM FOR THE SAME. WHEN THE WEATHER/SEASON PREVENTS THE INSTALLATION OF SOD, THE CONTRACTOR SHALL BE RESPONSIBLE FOR INSTALLING EROSION CONTROL BLANKET (CURLX I, OR APPROVED EQUAL) AT THE BACK OF CURB (8" WIDE MINIMUM). ALL COST FOR EROSION MAT INSTALLATION SHALL BE SUBSIDIARY TO "SITE RESTORATION".

THE CONTRACTOR SHALL RESEED ALL UNDEVELOPED AREAS DISTURBED BY CONSTRUCTION WITH A MIXTURE OF RYEGRASS (APPLIED AT A RATE OF 200 LBS. PER ACRE) AND BUFFALO GRASS, DEPENDING ON THE SOIL CONDITIONS (APPLIED AT A RATE OF 200 LBS. PER ACRE) AND BUFFALO GRASS, DEPENDING ON THE SOIL CONDITIONS (APPLIED PER STANDARD SPECIFICATIONS). PURE NITROGEN FERTILIZER SHALL ALSO BE APPLIED AT A RATE OF 1.5 LBS. PER THOUSAND SQUARE FEET. THE SEED SHALL BE WATERED WITH A DEEP SOAKING EVERY TWO (2) WEEKS DURING DRY PERIODS UNTIL A MATURE STAND OF GRASS IS OBTAINED. THE "RECAPITULATION OF QUANTITIES" SHOWS THE ESTIMATED SQUARE YARDS OF DISTURBED AREA TO BE SEEDED, WITH A BID ITEM FOR THE SAME. THE PERMANENT SEEDED MAY BE OMITTED ONLY IF SODDING IS REQUIRED. THE CONTRACTOR SHALL BE RESPONSIBLE FOR INSTALLING EROSION CONTROL BLANKET (CURLX I, OR APPROVED EQUAL) AT THE BACK OF CURB, TO AND INCLUDING THE LIMITS OF ALL SEEDED AREAS. ALL COSTS FOR THIS WORK SHALL BE SUBSIDIARY TO THE SEEDED BID ITEMS.

LEGEND

- FLOW ARROW
- AREA INLET PROTECTION
- CURB INLET PROTECTION
- BACK OF CURB PROTECTION
- CONSTRUCTION LIMITS
- STABILIZED CONSTRUCTION ENTRANCE

EROSION CONTROL BMP SUMMARY		
ITEMS	QUANTITY	UNIT
BMP, Back of Curb Protection	2,794	L.F.
BMP, Curb Inlet Protection	18	Each
BMP, Drop Inlet Protection	1	Each
BMP, Construction Entrance	4	Each



STREET IMPROVEMENTS FOR
MT. VERNON & HILLSIDE INTERSECTION
 PAVING PLANS

©2019 MKEC Engineering All Rights Reserved www.mkec.com
 These drawings and their contents, including, but not limited to, all concepts, designs, & ideas are the exclusive property of MKEC Engineering (MKEC), and may not be used or reproduced in any way without the express consent of MKEC.

EROSION CONTROL PLAN

PROJECT NO.	472-85286	
DATE	DATE	
SCALE	1"=40'	
DESIGNED	DRAWN	CHECKED
LES	LES	JRA

NO.	REVISION	DATE

SHEET NO.