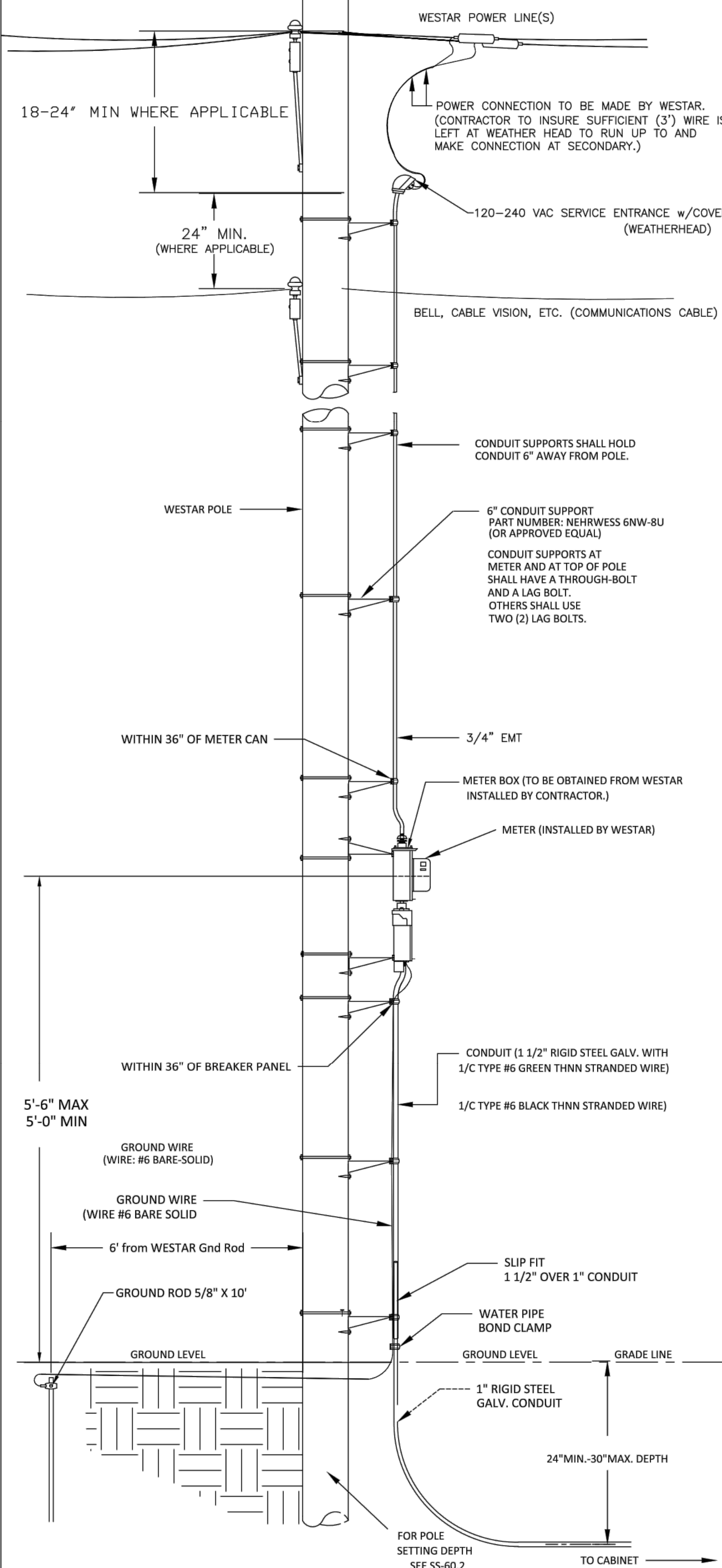
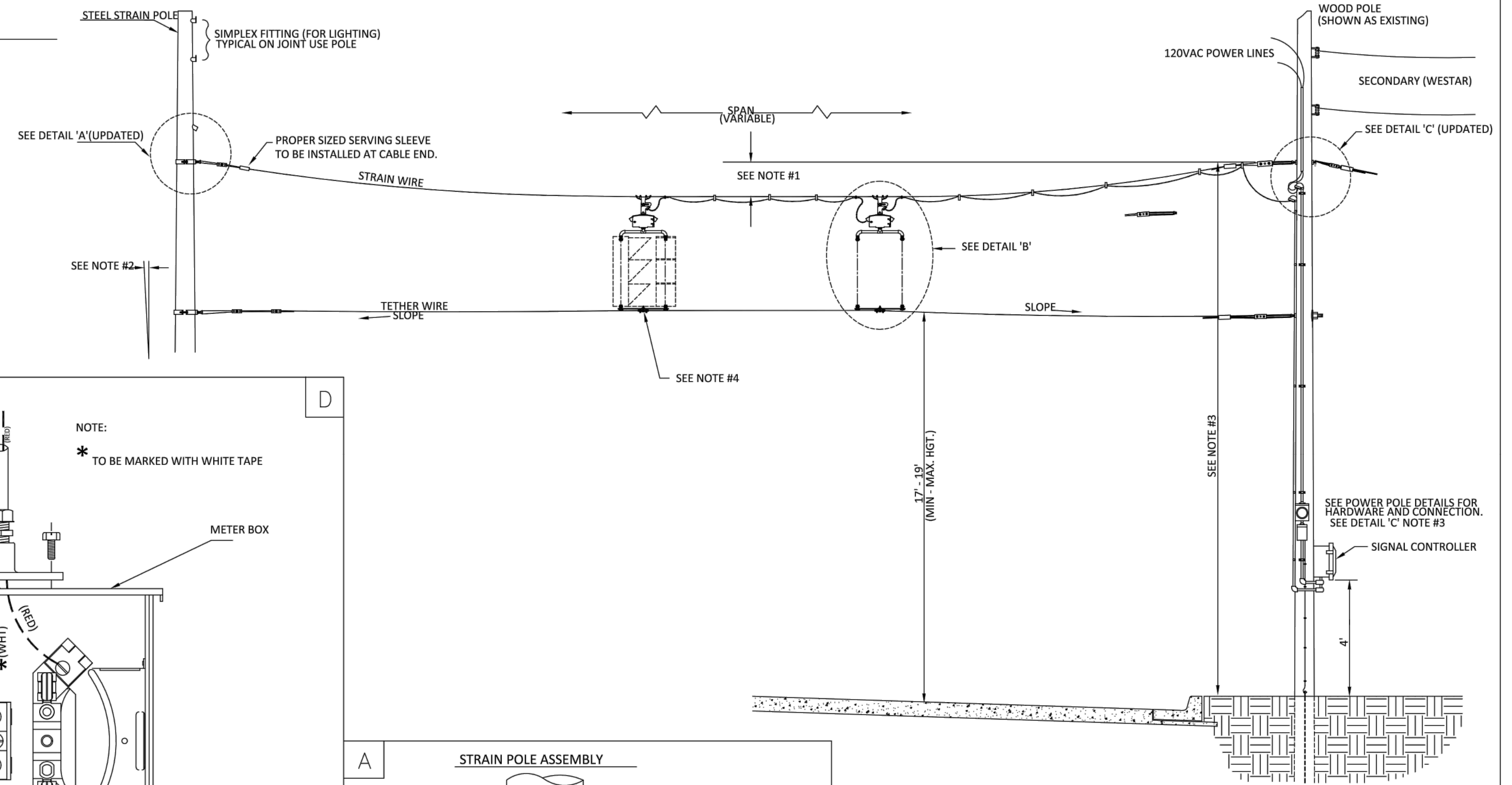


**POWER POLE DETAILS**

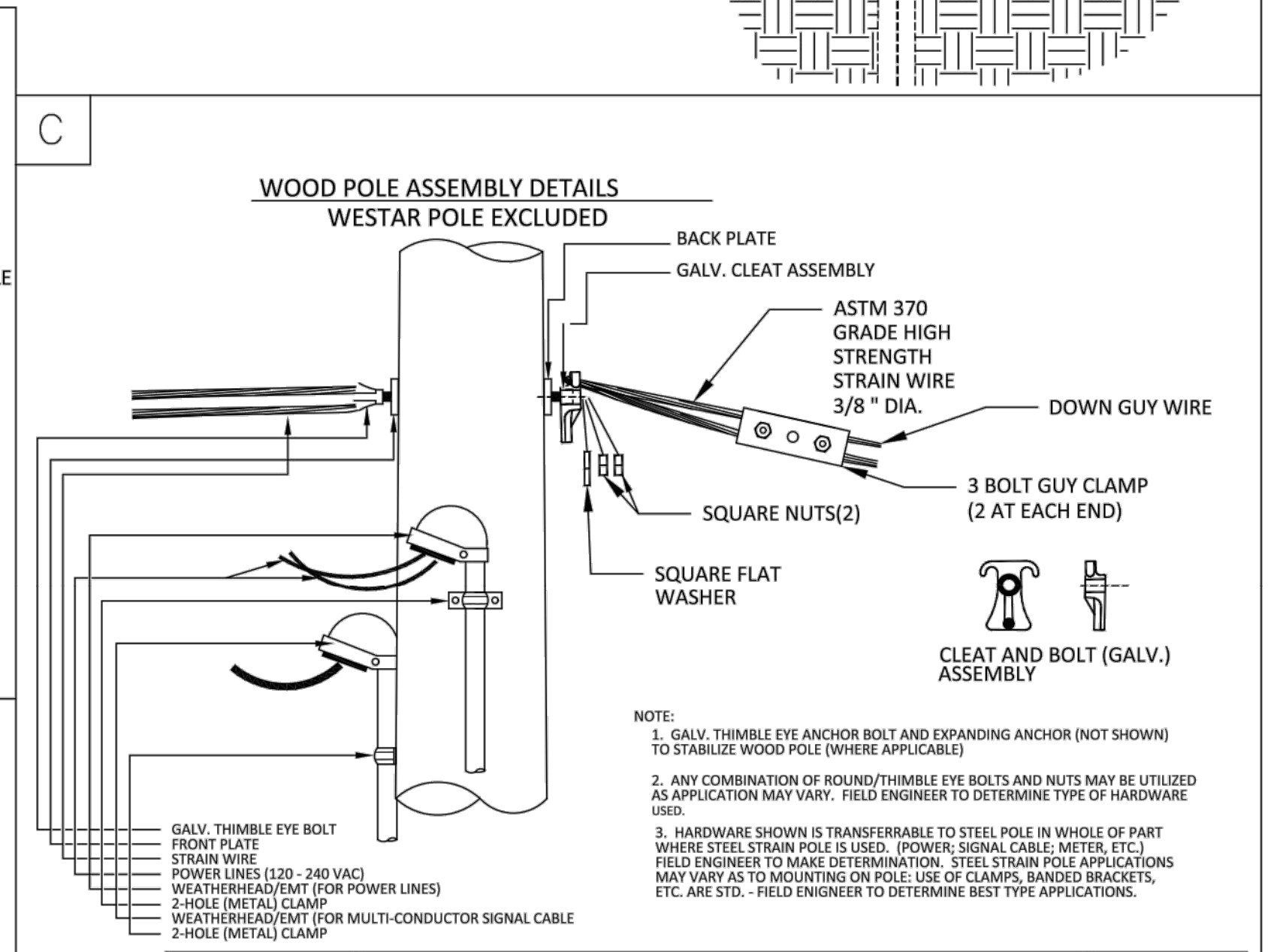
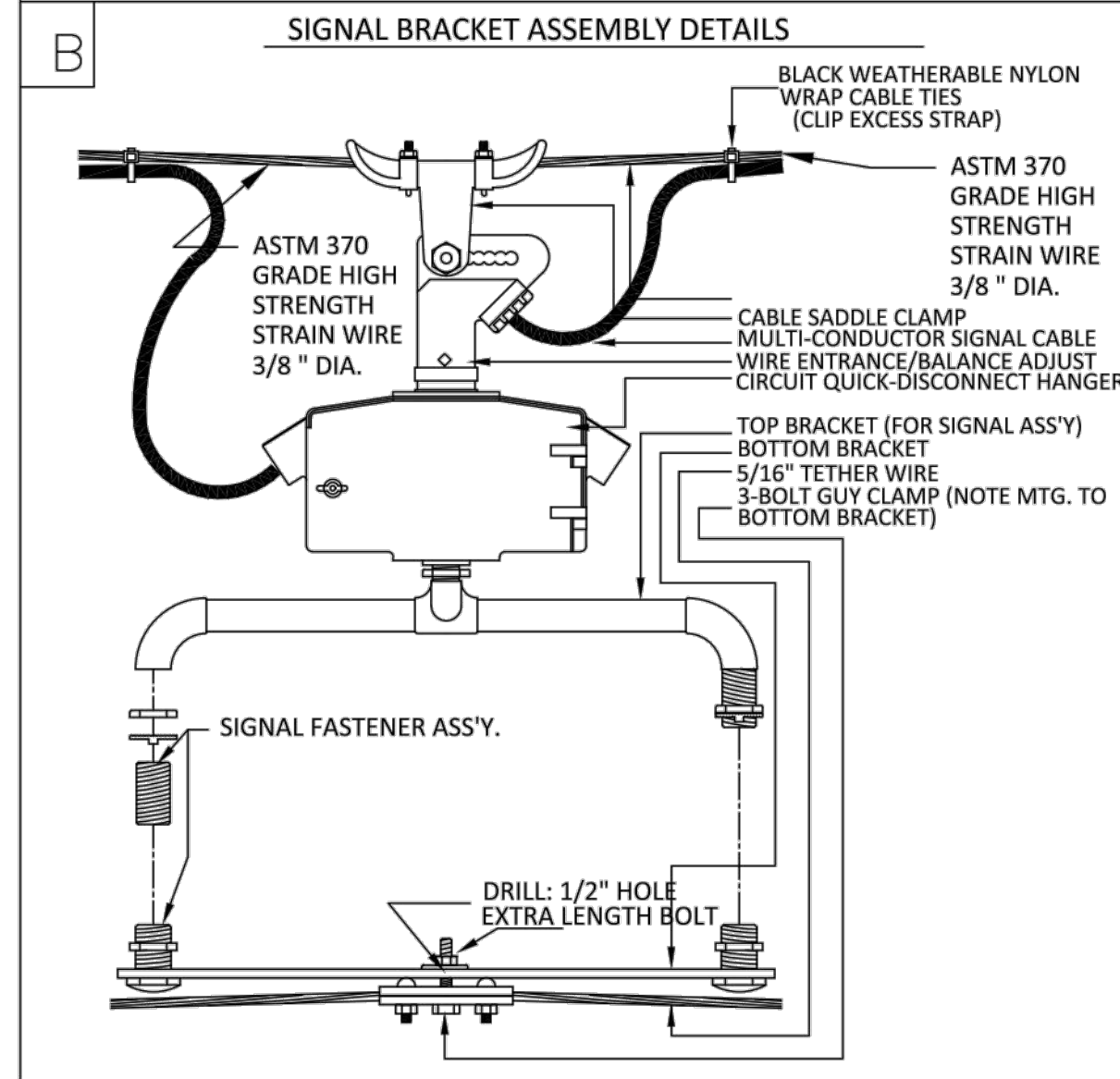
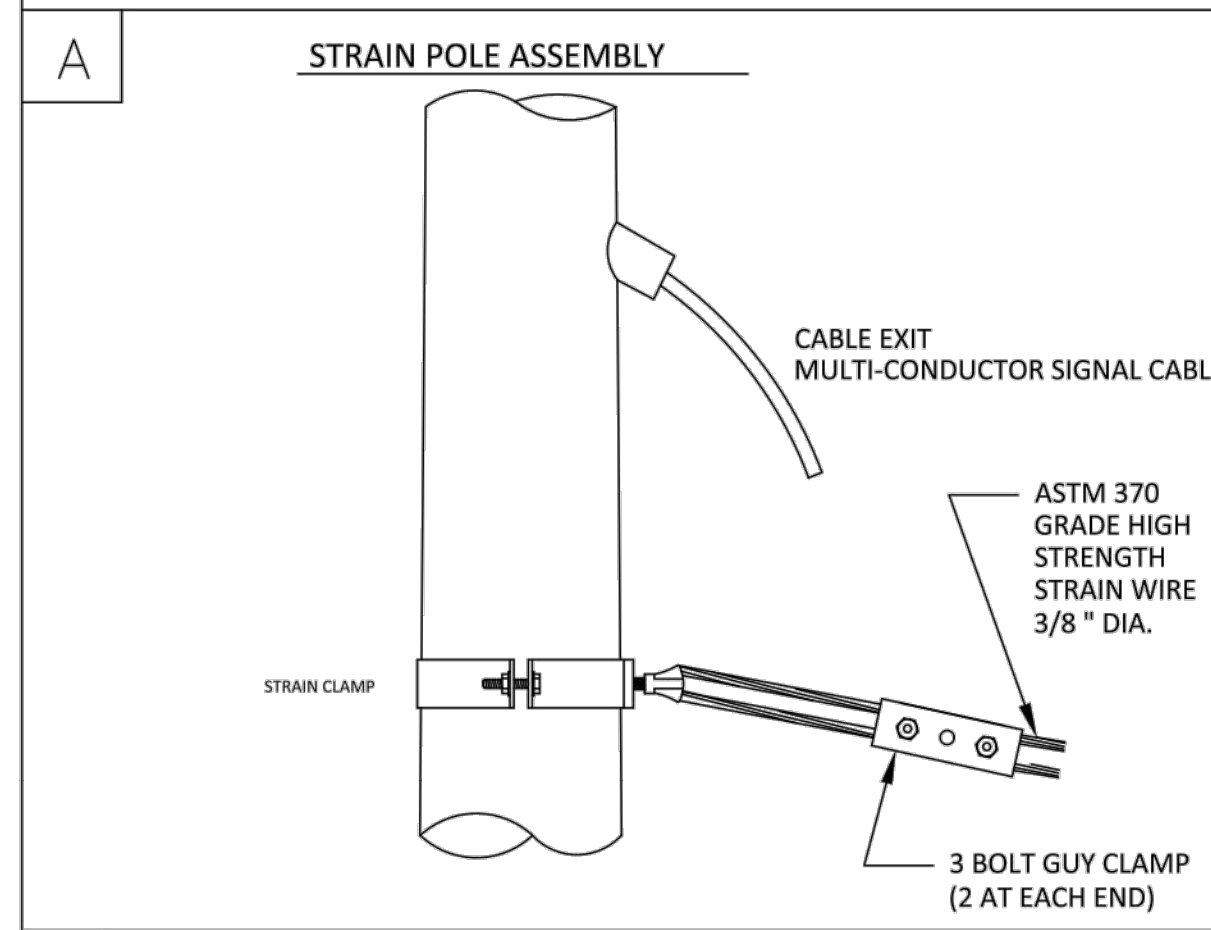
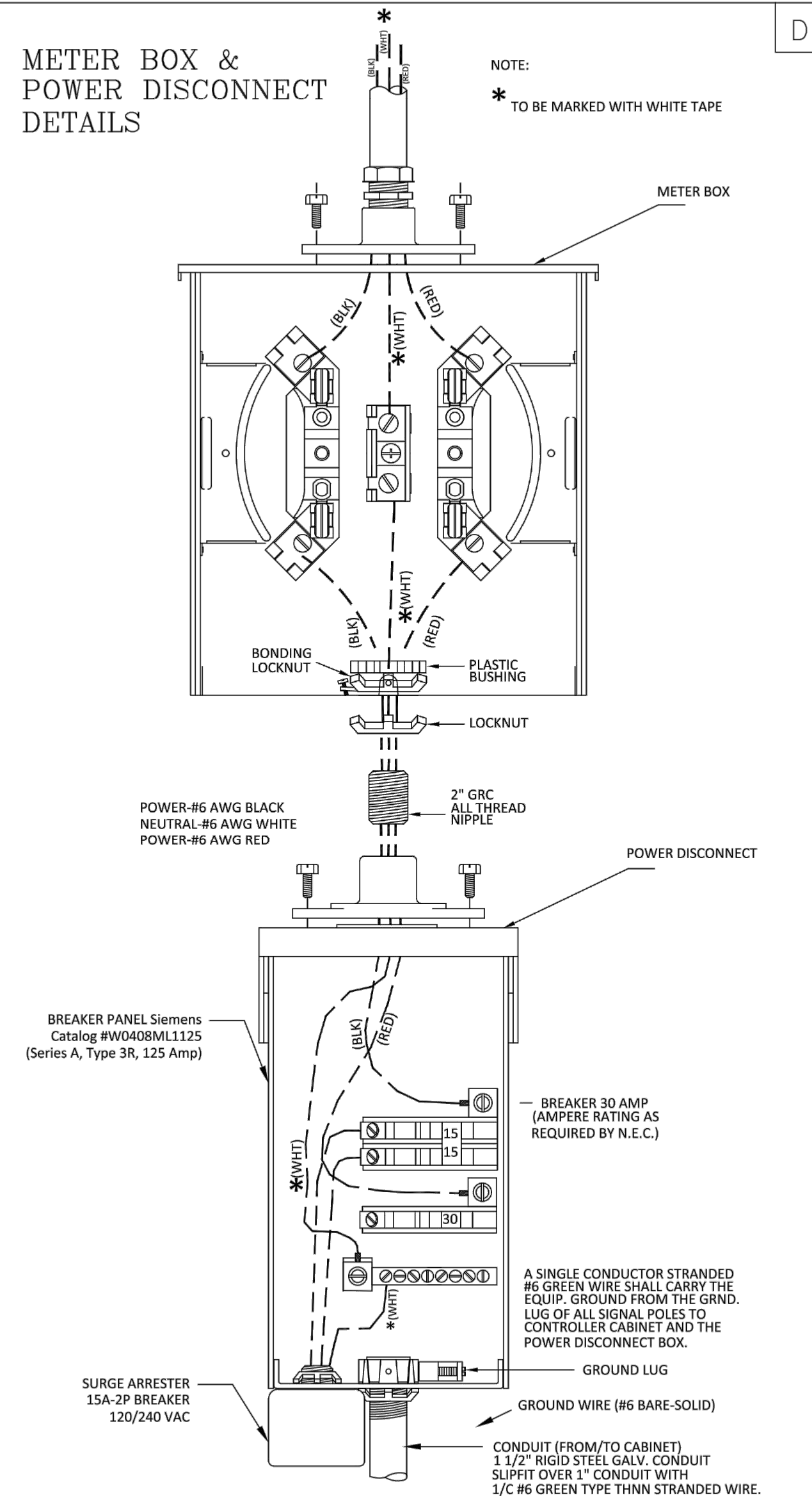


**SPANWIRE ASSEMBLY DETAILS**

1. MAX. SAG = 5% OF SPAN.
2. STANDARD BACKRAKE = 1.5"
3. HEIGHT OF STRAIN WIRE HOOK-UP TO BE DETERMINED BY FIELD ENGINEER. TRAFFIC SIGNAL CABLE TO BE SECURED TO STRAIN (SPAN) WIRE WEATHERABLE NYLON CABLE HANGERS (12" CTR.) DETAIL 'B'
4. TETHER CLAMP TO BE DESIGNED TO RELEASE UNDER 'HIGH WIND LOAD' TO PERMIT SIGNAL 'FREE SWING'.



**METER BOX & POWER DISCONNECT DETAILS**



REVISION DATE 9-8-2017	Multiple changes, approved Chris Nordick, MABCD	A.S.
<b>CITY OF WICHITA</b>		
<b>POWER POLE AND SPAN POLE ASSEMBLY DETAILS</b>		
TRAFFIC ENGINEER <b>BRIAN A. COON P.E.</b>		
PROJECT NUMBER 472-85286	OCA NUMBER 707100	DATE Date
CITY ENGINEER'S OFFICE CITY HALL - SEVENTH FLOOR 455 NORTH MAIN STREET WICHITA, KANSAS 67202-1620 (316) 268-4501		SHEET 63 OF 101