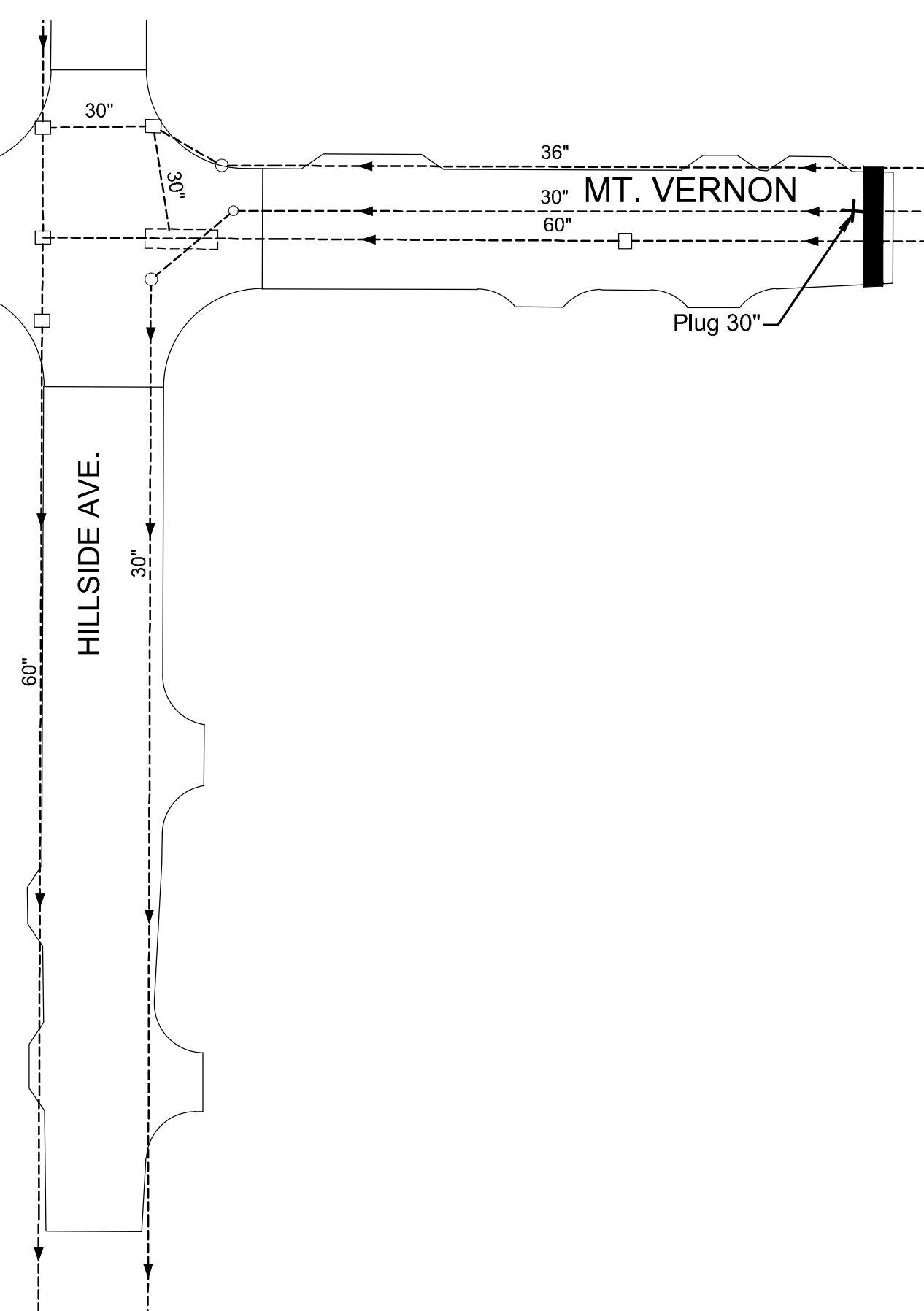
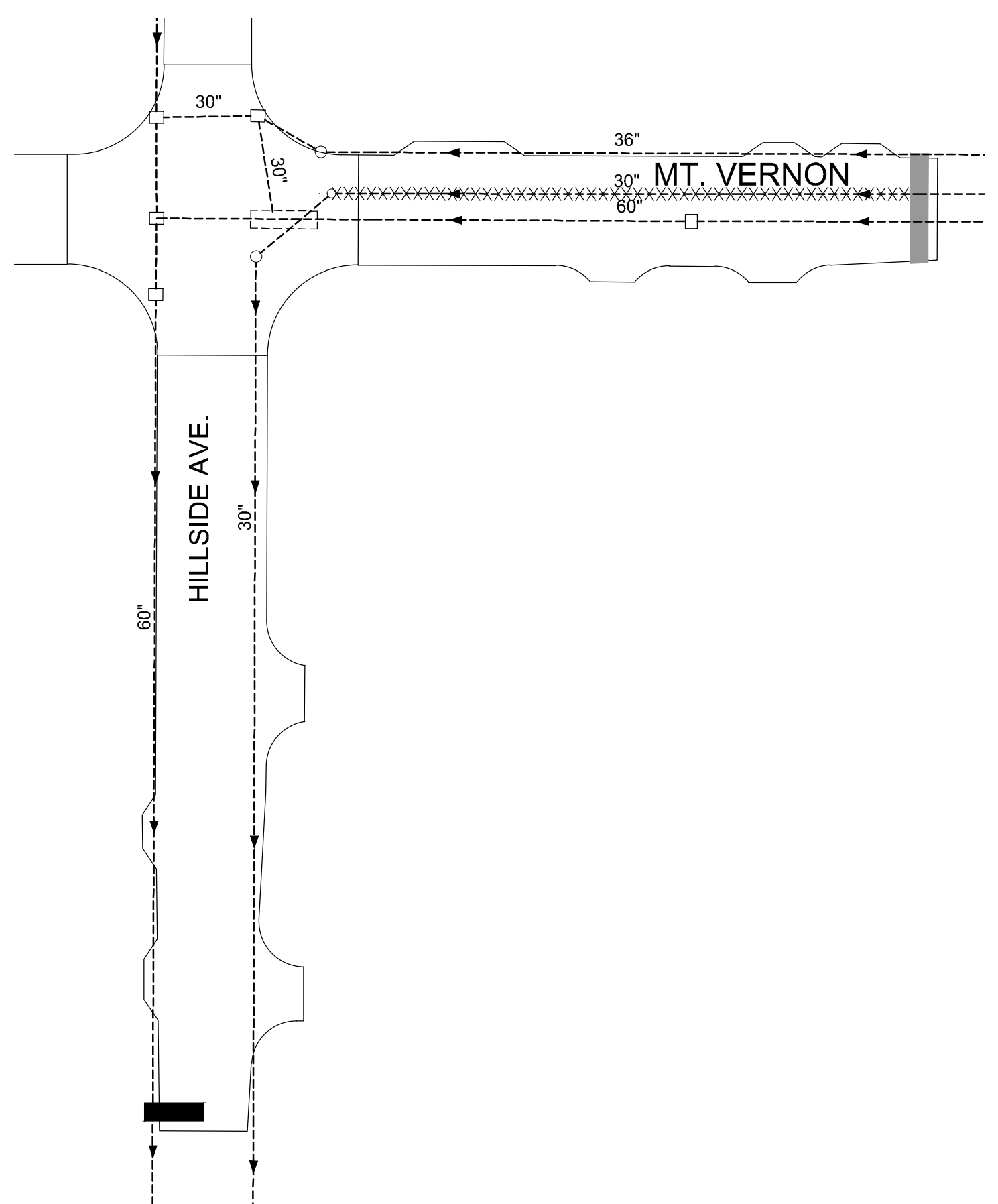


PLOTTED: Tuesday, April 16, 2019 @ 04:04PM

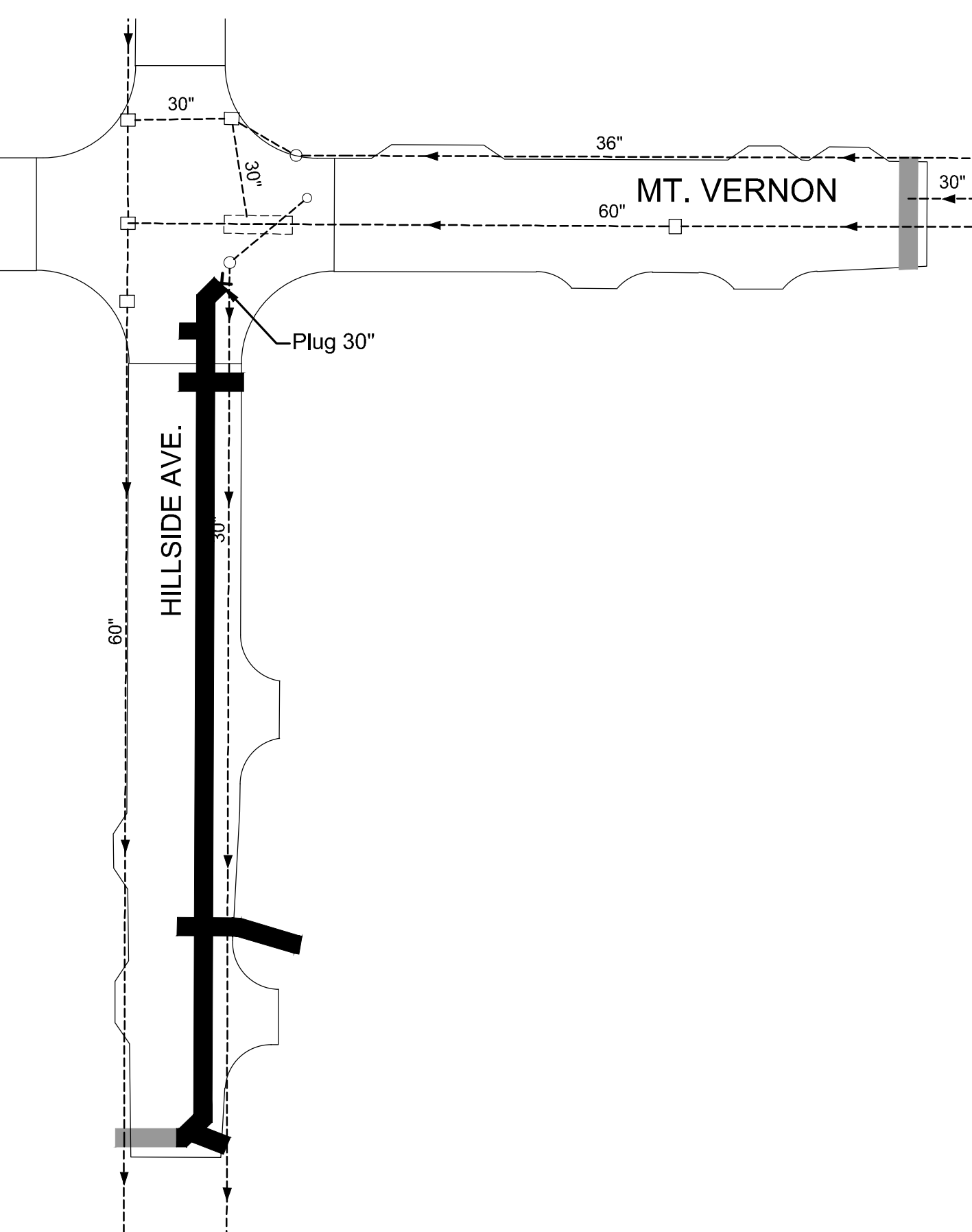
J:\PROJECTS\2018\160101451_Mt. VERNON AND HILLSIDE_160151_CADD\SHOTS\06_CIVIL\TRAFFIC\16151-GS901.DWG



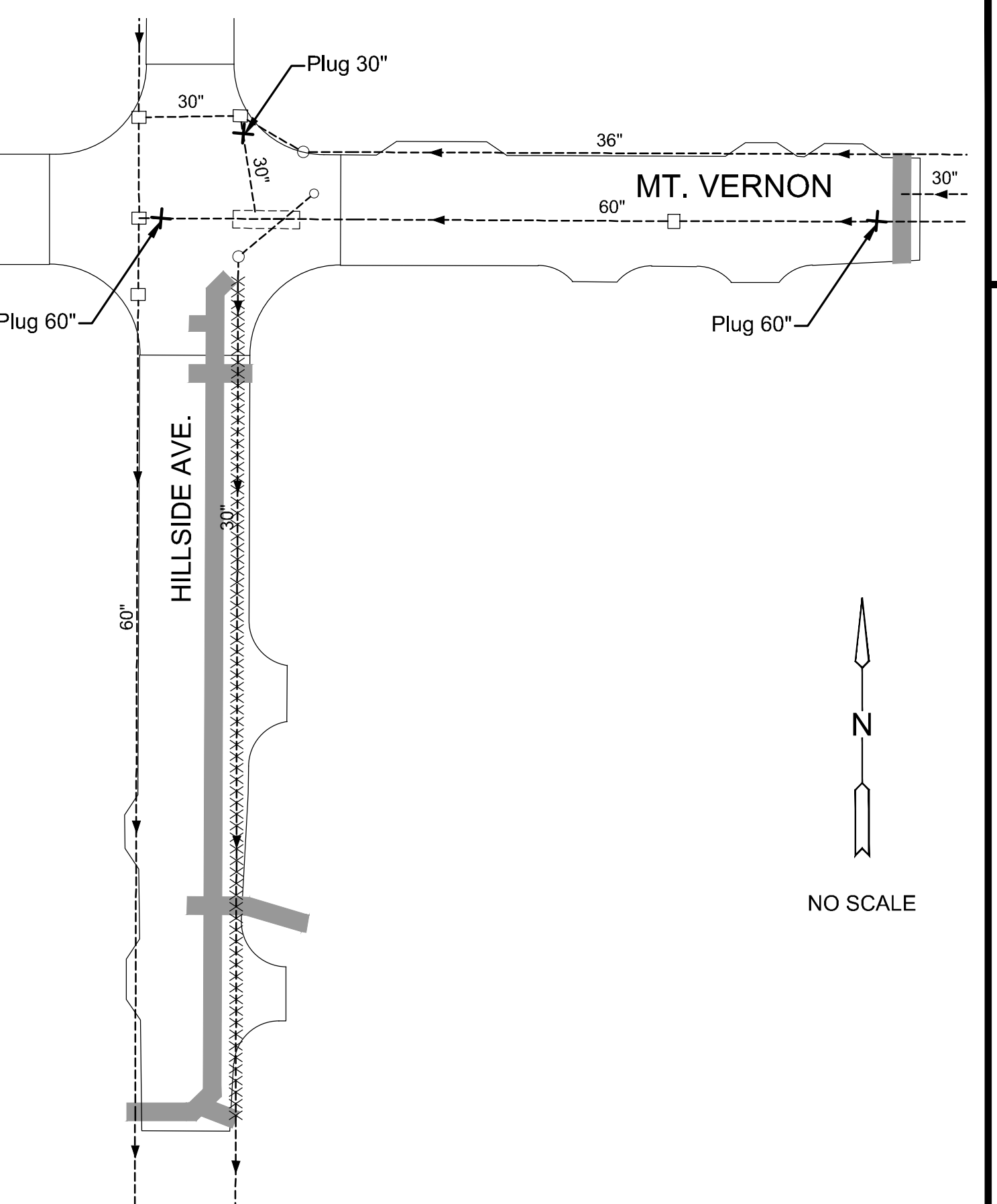
PHASE 1 CONSTRUCTION PLAN



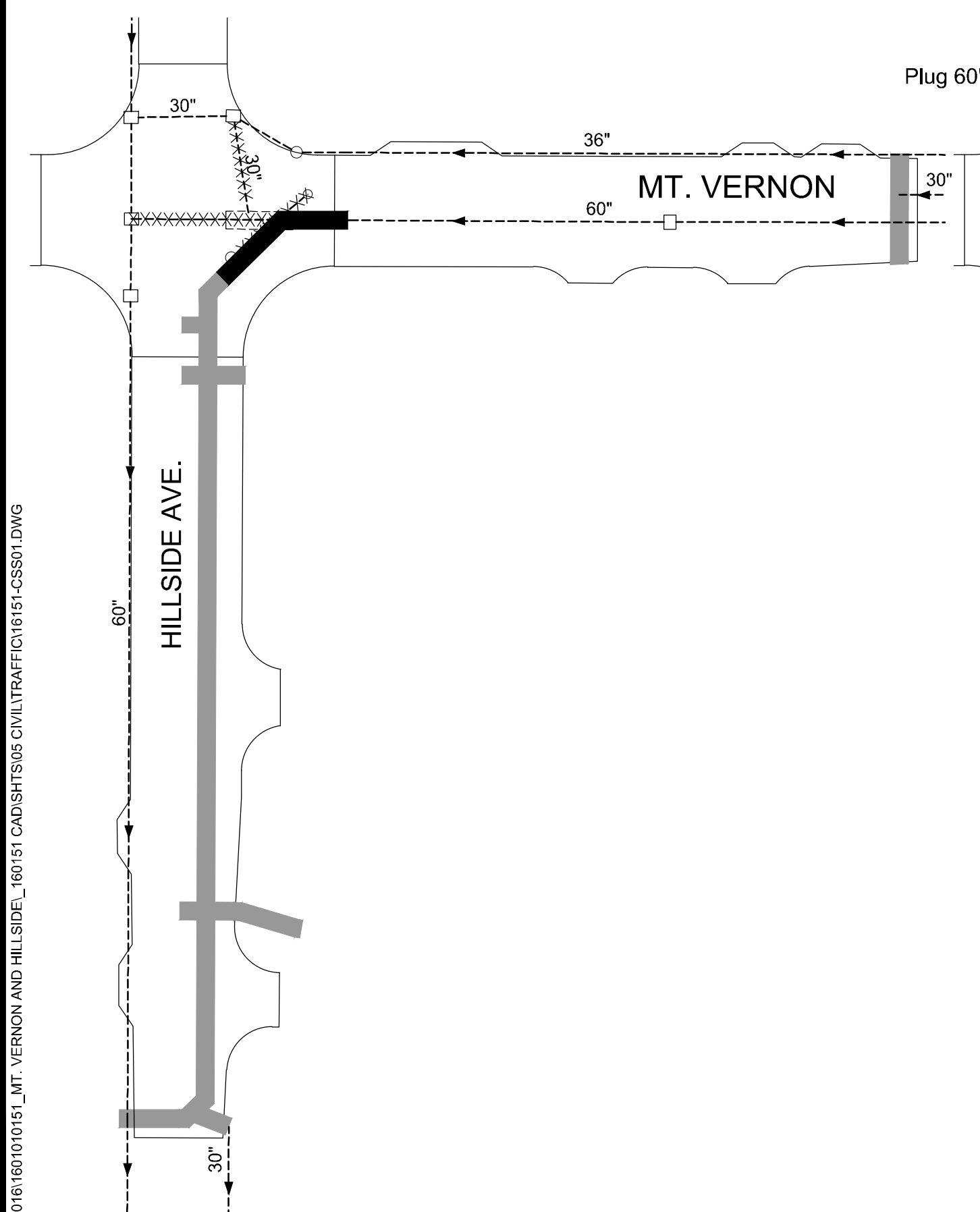
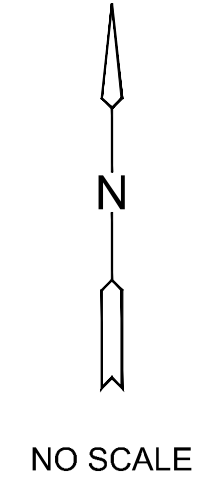
PHASE 2 CONSTRUCTION PLAN



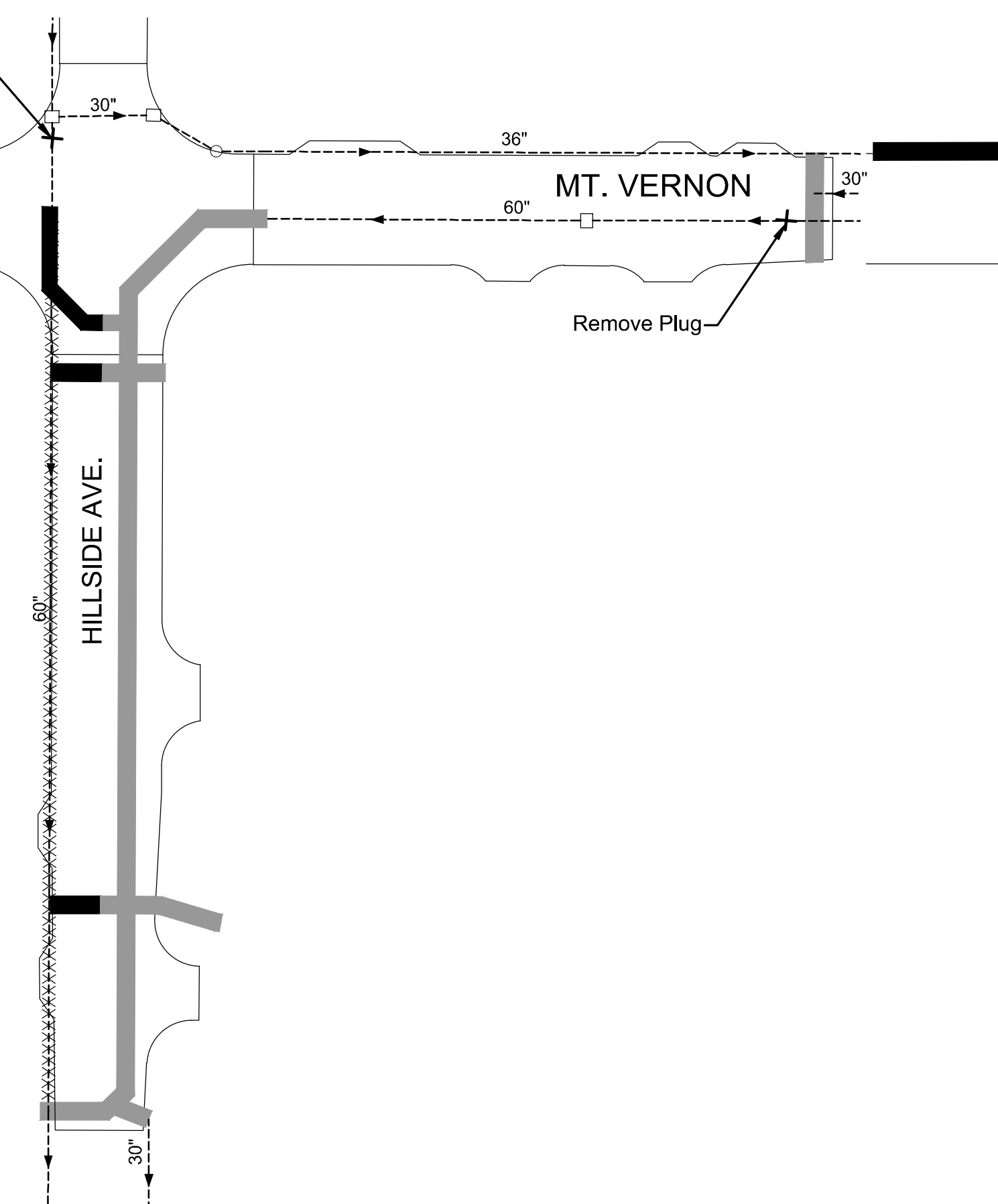
PHASE 3A CONSTRUCTION PLAN



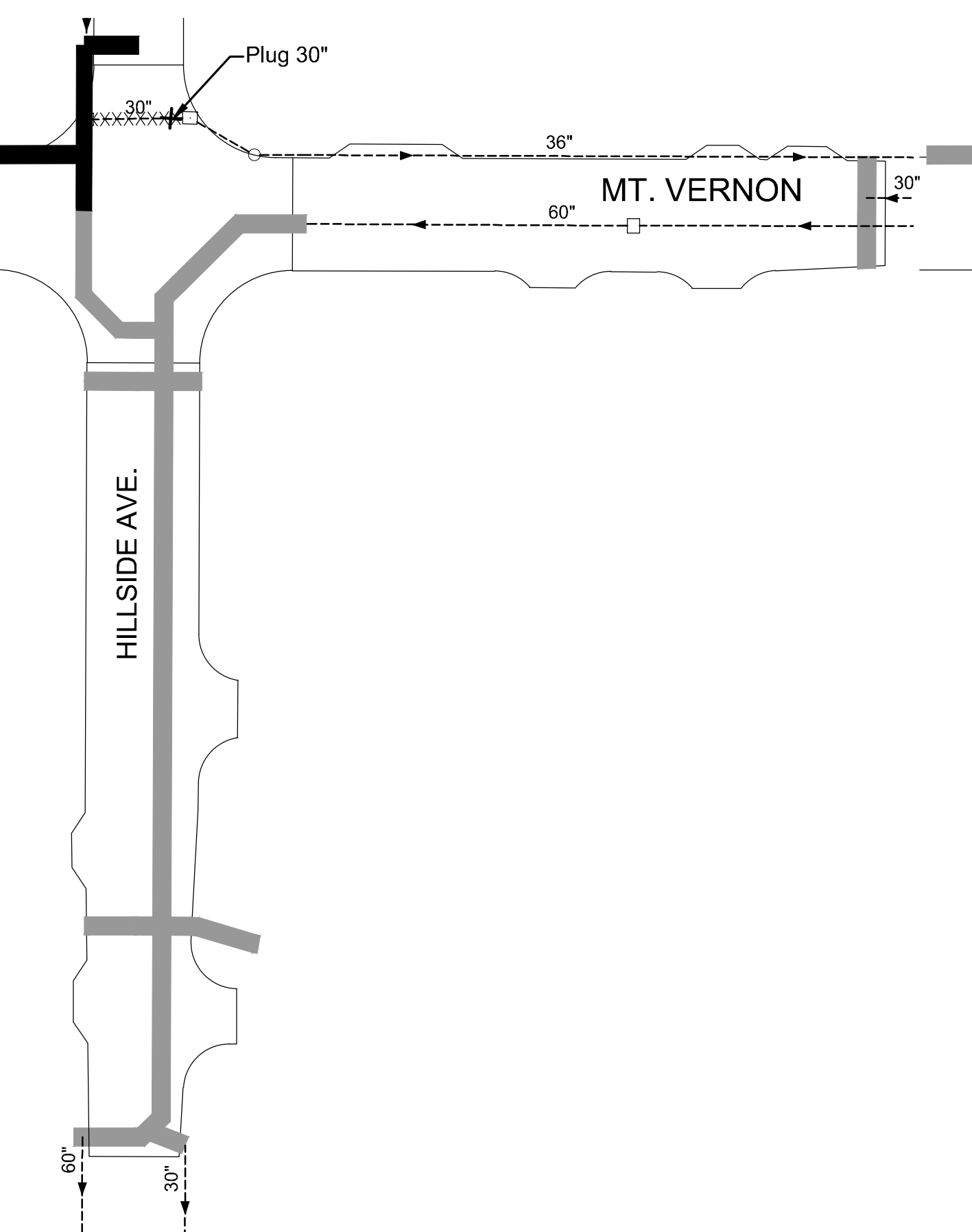
PHASE 3B CONSTRUCTION PLAN



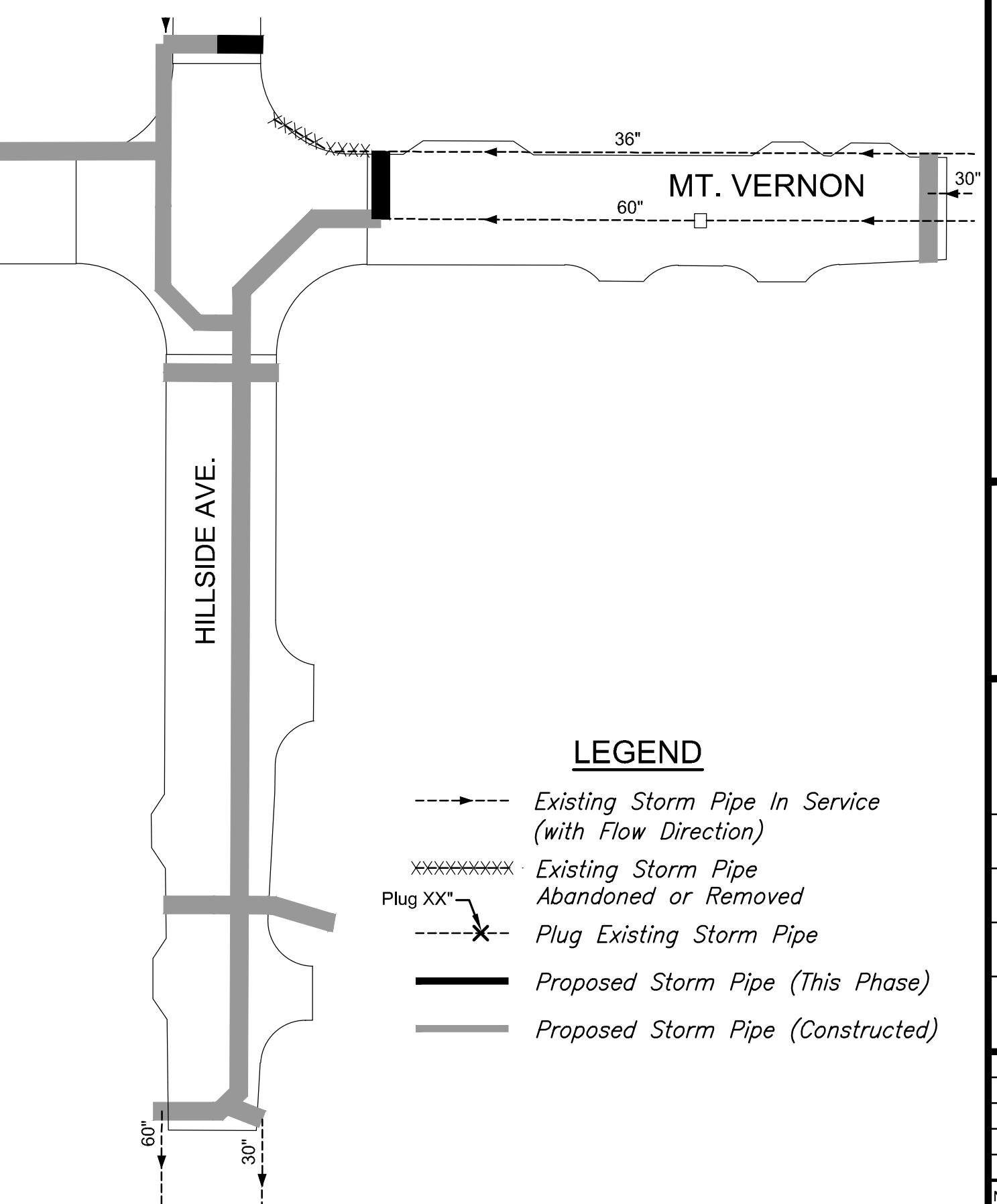
PHASE 3C CONSTRUCTION PLAN



PHASE 4 CONSTRUCTION PLAN



PHASE 5 CONSTRUCTION PLAN



PHASE 6 CONSTRUCTION PLAN

- LEGEND**
- Existing Storm Pipe In Service (with Flow Direction)
 - xxxxxx Existing Storm Pipe Abandoned or Removed
 - Plug Existing Storm Pipe
 - Proposed Storm Pipe (This Phase)
 - Proposed Storm Pipe (Constructed)



STREET IMPROVEMENTS FOR
MT. VERNON & HILLSIDE INTERSECTION
 PAVING PLANS

©2019 MKEC Engineering All Rights Reserved www.mkec.com
 These drawings and their contents, including, but not limited to, all concepts, designs, & ideas are the exclusive property of MKEC Engineering (MKEC), and may not be used or reproduced in any way without the express consent of MKEC.

STORM SEWER CONSTRUCTION SEQUENCING

PROJECT NO.	472-85286	
DATE	DATE	
SCALE	NTS	
DESIGNED	DRAWN	CHECKED
JRA	DMU	JRA
NO.	REVISION	DATE

SHEET NO.