



© 2018 GARVER, LLC
 THIS DOCUMENT, ALONG WITH THE IDEAS AND DESIGNS CONVEYED HEREIN, SHALL BE CONSIDERED INSTRUMENTS OF PROFESSIONAL SERVICE AND ARE PROPERTY OF GARVER, LLC. ANY USE, REPRODUCTION, OR DISTRIBUTION OF THIS DOCUMENT, ALONG WITH THE IDEAS AND DESIGN CONTAINED HEREIN, IS PROHIBITED UNLESS AUTHORIZED IN WRITING BY GARVER, LLC OR EXPLICITLY ALLOWED IN THE GOVERNING PROFESSIONAL SERVICES AGREEMENT FOR THIS WORK.
 8535 E. 21st Street North
 Suite 130
 Wichita, Kansas 67206



REV.	DATE	DESCRIPTION	BY



CITY OF WICHITA
 KANSAS
 FOUNTAIN BOX REPLACEMENT

Wingwall Details

JOB NO.: 19T41013
 DATE: MAY 2019
 DESIGNED BY: KWL
 DRAWN BY: KWL
 BAR IS ONE INCH ON ORIGINAL DRAWING
 IF NOT ONE INCH ON THIS SHEET, ADJUST SCALES ACCORDINGLY.
 DRAWING NUMBER
 SHEET NUMBER **5** OF **9**

GENERAL NOTES

UNIT STRESSES: Grade 4.0 Concrete; $f_c = 4,000$ p.s.i.
 Reinforcing Steel; $f_y = 60,000$ p.s.i.

CONCRETE: Grade 4.0 Concrete shall be used throughout. Bevel all exposed edges with a 3/4" triangular moulding.

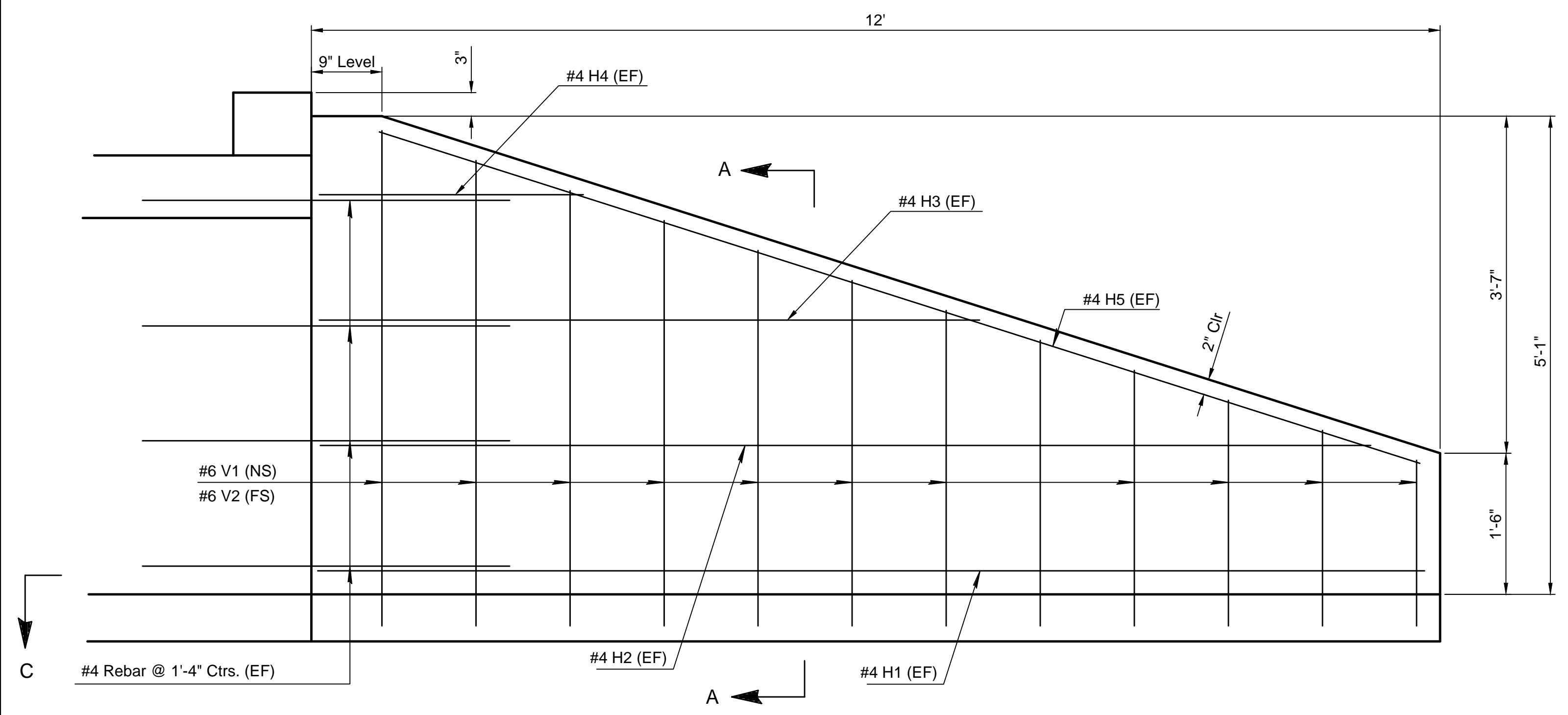
REINFORCING: All reinforcing shall conform to ASTM A615, Grade 60. Welded Wire Fabric shall conform to ASTM A185. All dimensions relative to reinforcing steel shall be to center-line of bar unless otherwise noted. Wire Reinforcing mesh shall be electrically welded and shall be composed of 6 x 6-W1.4 x W1.4 welded wire fabric and shall be classified as pounds of reinforcing. No epoxy coating is required on this project.

QUANTITIES: Wingwall Quantities include all quantities outside the neat lines of the box, excluding the hubguard.

APRON: A 5" concrete slab shall be constructed between wings in locations subject to scour as specified on the plans. The toe wall is required on both the apron and the footings. The scour apron may be poured monolithically with the base.

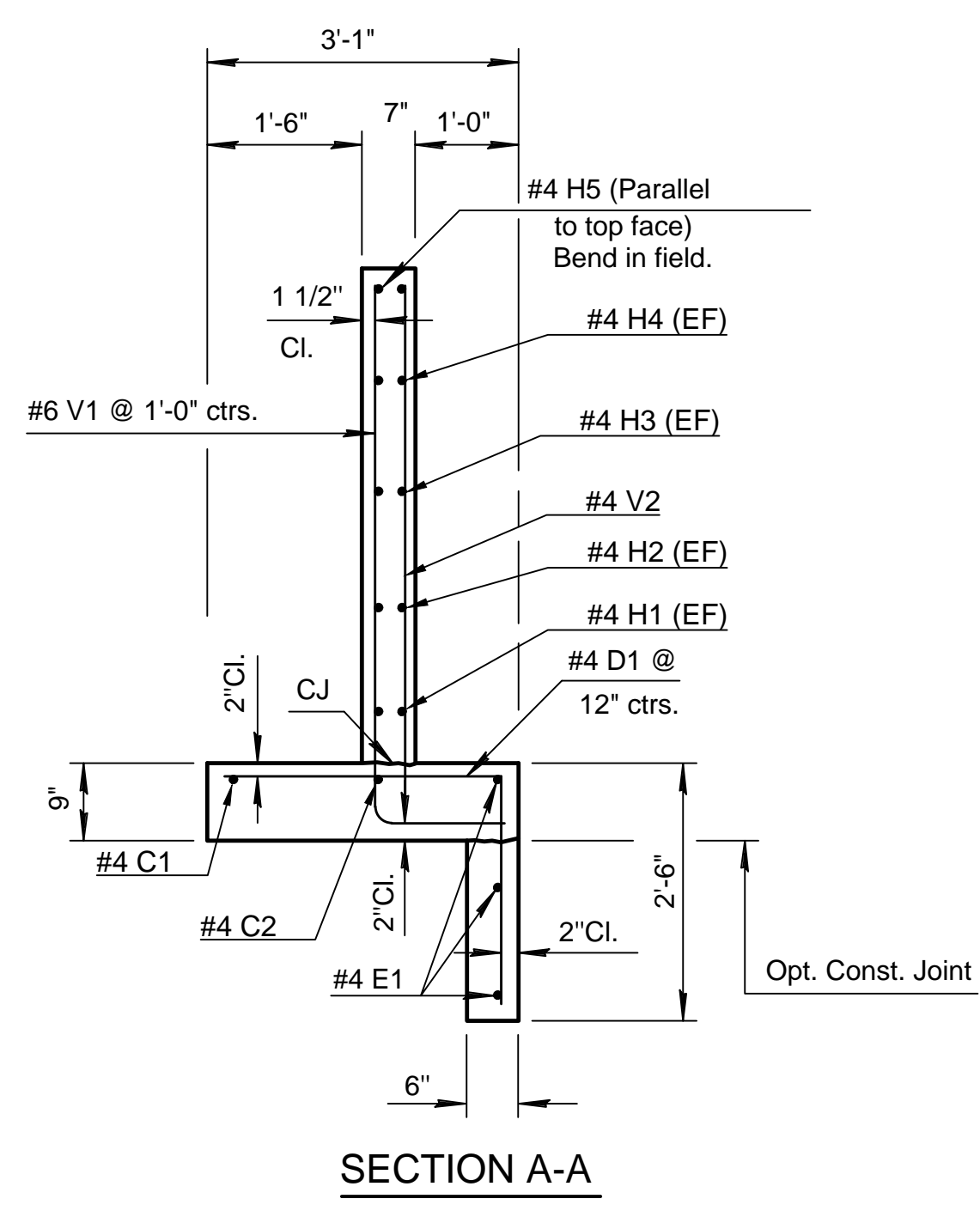
BACKFILL MATERIAL: Soils judged as high plasticity clays, fat clays, expansive clays, or organic clays are unsuitable for backfill material for wingwalls and will not be used. Where these conditions exist, use Granular Backfill (Wingwalls).

FOUNDATION STABILIZATION: Use Foundation Stabilization on all wingwalls unless founded on rock or granular material.

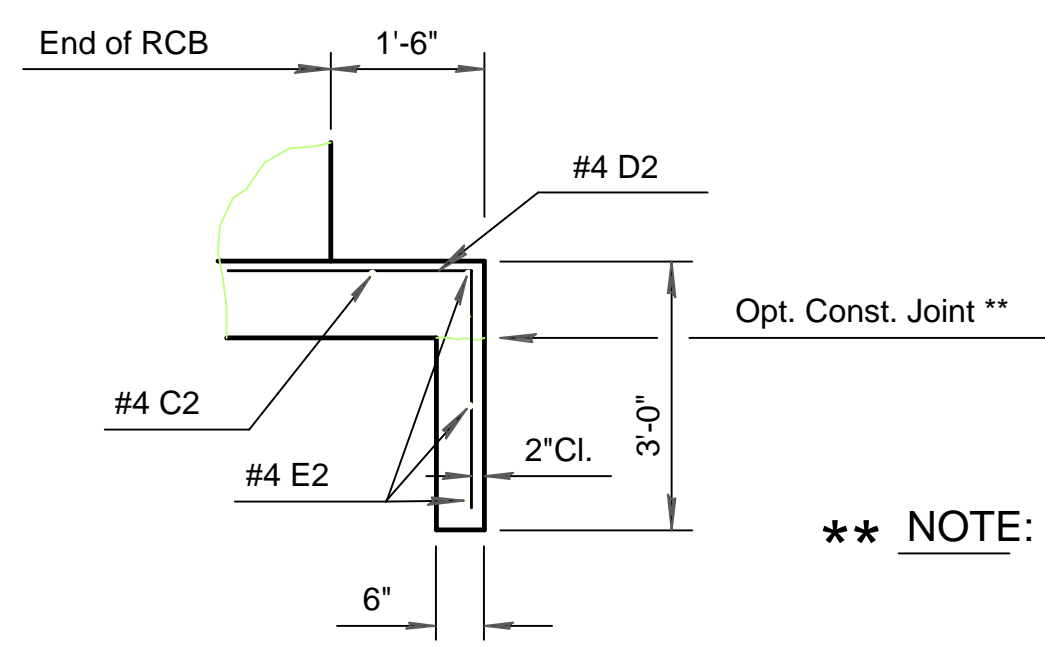


ELEVATION OF FOUNTAIN WINGWALL
 N.T.S.
 (Backface Shown)

NOTE:
 EF = Each Face
 NS = Near Side
 FS = Far Side
 CJ = Const. Joint

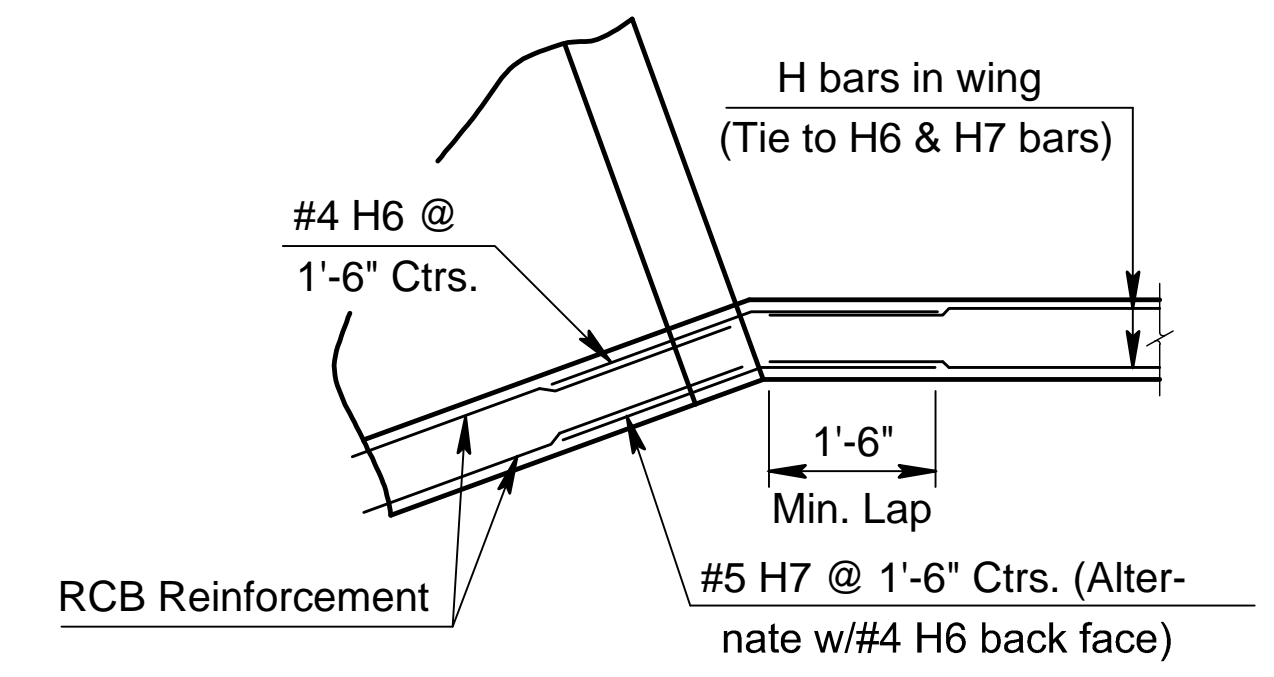


SECTION A-A

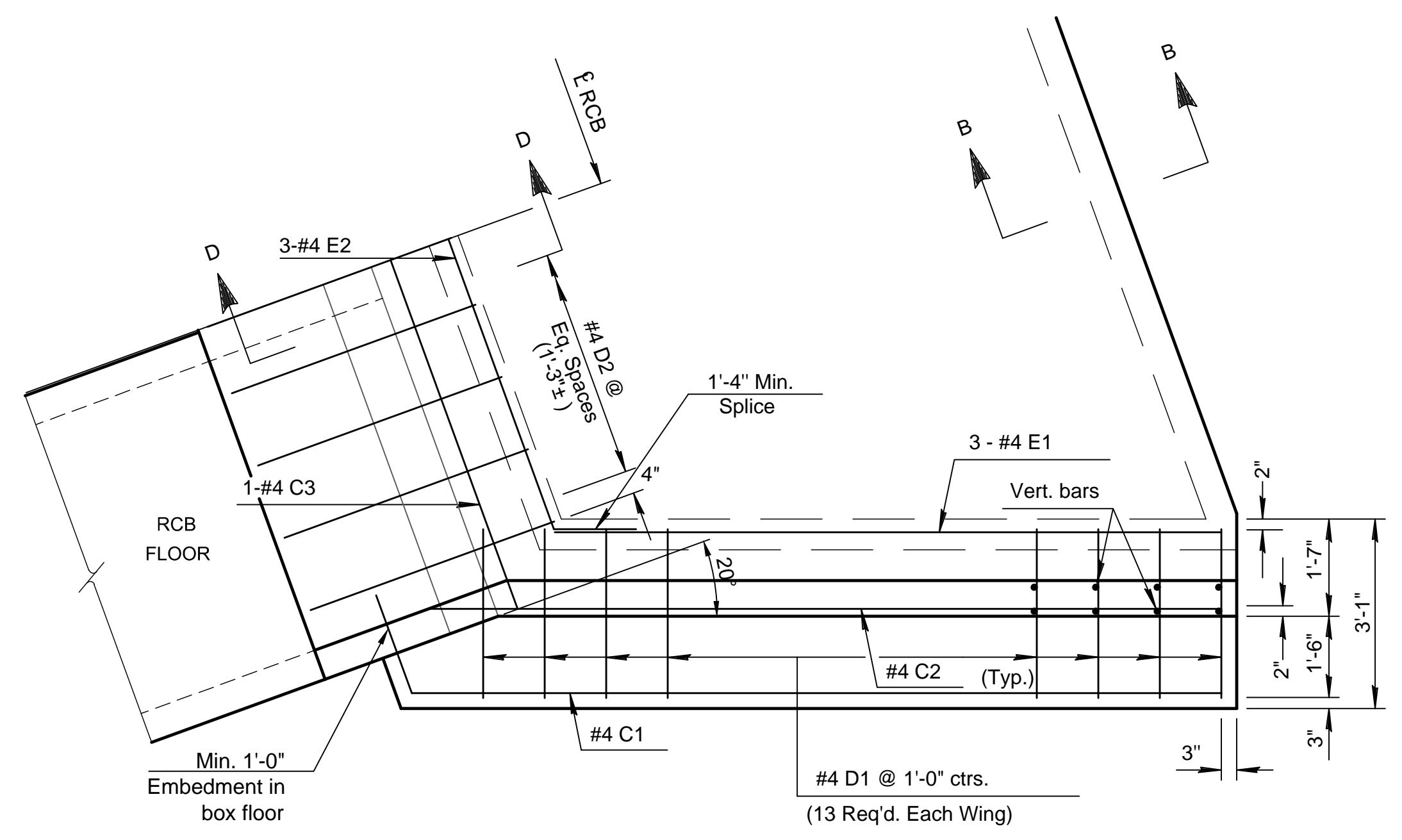


SECTION D-D

**** NOTE:** Const. Jt. may be used at Contractor's option when approved by the Engineer. D1 bars or mesh may be spliced thus: Minimum overlap shall be 1'-3". No increase in quantities or cost shall be allowed when Contractor elects this option.

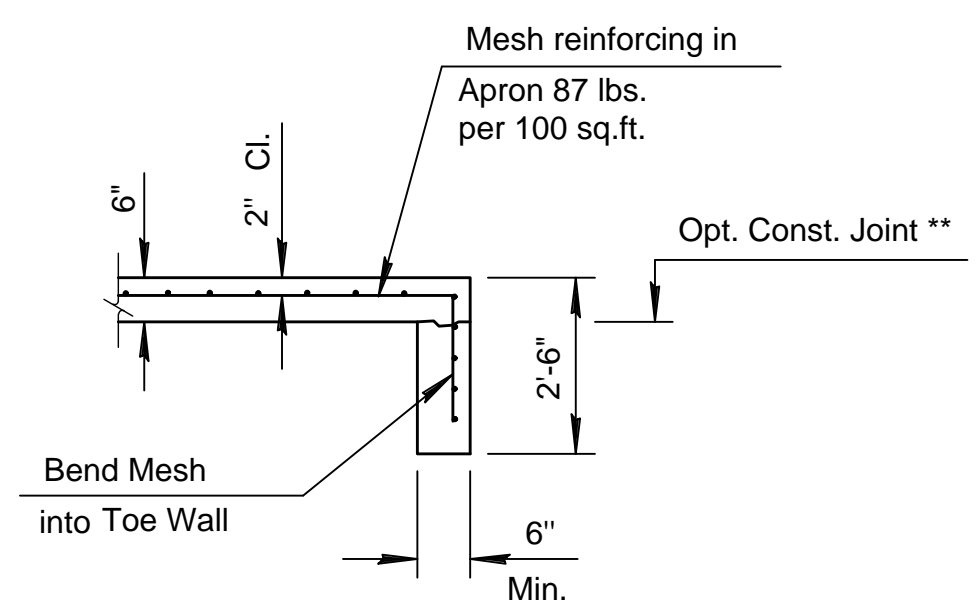


DETAIL OF CORNER REINFORCEMENT
 (Plan View)



SECTION C-C

Note: Space weepholes to clear reinforcing steel. Refer to KDOT Standard Detail "RCB Aux. Details" sheet for additional weep-hole details.

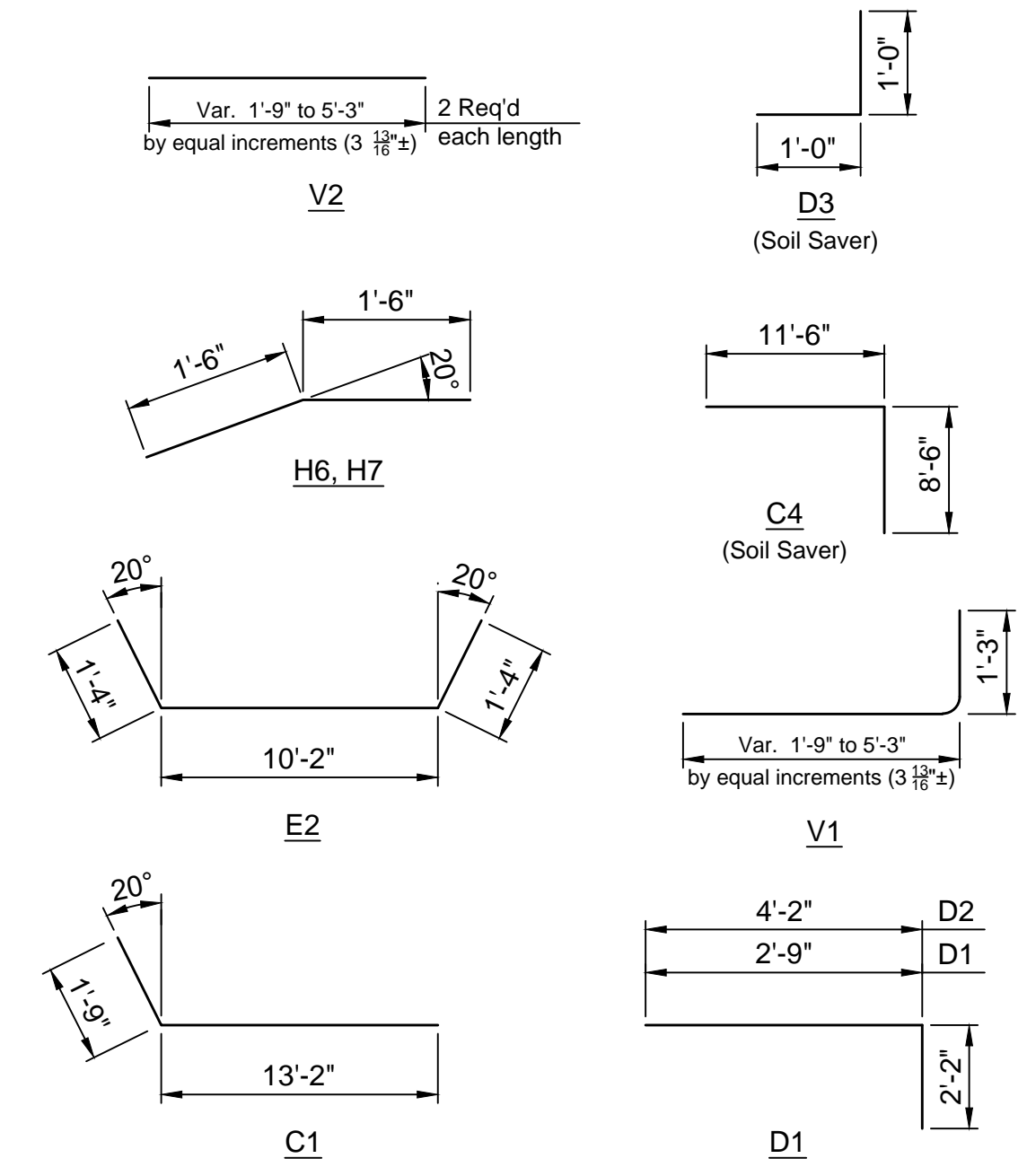


SECTION THROUGH SCOUR APRON TOEWALL

SECTION B-B

FOR INFORMATION ONLY

	WINGWALL QUANTITIES (One End Only)	
	Foundation Stabilization (C.Y.)	Concrete (Gr. 4.0) (C.Y.)
Wingwalls	2.00	5.28
Apron	1.63	3.33
Reinforcing Steel (Gr. 60)		547 Lbs.
Welded Wire Fabric (Apron)		77 Lbs.
Granular Backfill (Wingwalls)		15.15 C.Y.



BENDING DIAGRAM
 (all dimensions are out to out of bars)

File: L:\2019\19T41013 - Fountain Box Plan Review\Drawings\C3D\3866D Fountain Engineering Base.dwg Last Save: 6/7/2019 8:43 AM Last saved by: KWL
 Last plotted by: Lee, Ken W. Plot Style: Plot Scale: 1:25849 Plot Date: 6/10/2019 7:20 AM Plotter used: None

NOTE: Reinforcing Bar List is for both wings at one end of box only. C4 and D3 are for soil saver only.

* See Bending Diagram

0° Skew	Mark	#4C1	#4C2	#4C3	#4C4	#4D1	#4D2	#4D3	#4E1	#4E2	#4V1	#5V2	#4H1	#4H2	#4H3	#4H4	#4H5	#4H6	#5H7
	Number	2 *	2	1	1 *	26	9 *	9 *	6	3 *	24	24	4	4	4	4	4	8	8
	Length	14'-11"	12'-10"	12'-1"	20'-0"	4'-11"	6'-4"	6'-4"	10'-10"	12'-10"	*	*	11'-9"	11'-2"	7'-0"	2'-9"	11'-9"	3'-0"	3'-0"