

REV.	DATE	DESCRIPTION	BY



CITY OF WICHITA
KANSAS

FOUNTAIN BOX REPLACEMENT

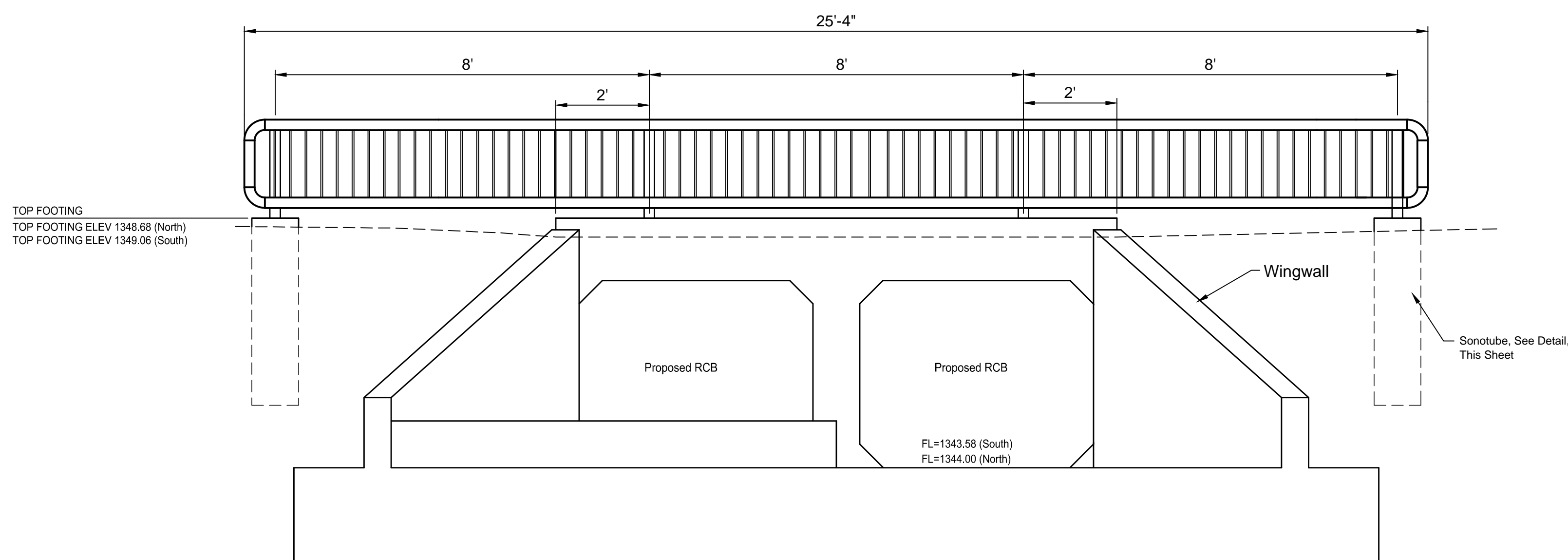
Handrail Detail

JOB NO.: 19T41013
DATE: MAY 2019
DESIGNED BY: KWL
DRAWN BY: KWL

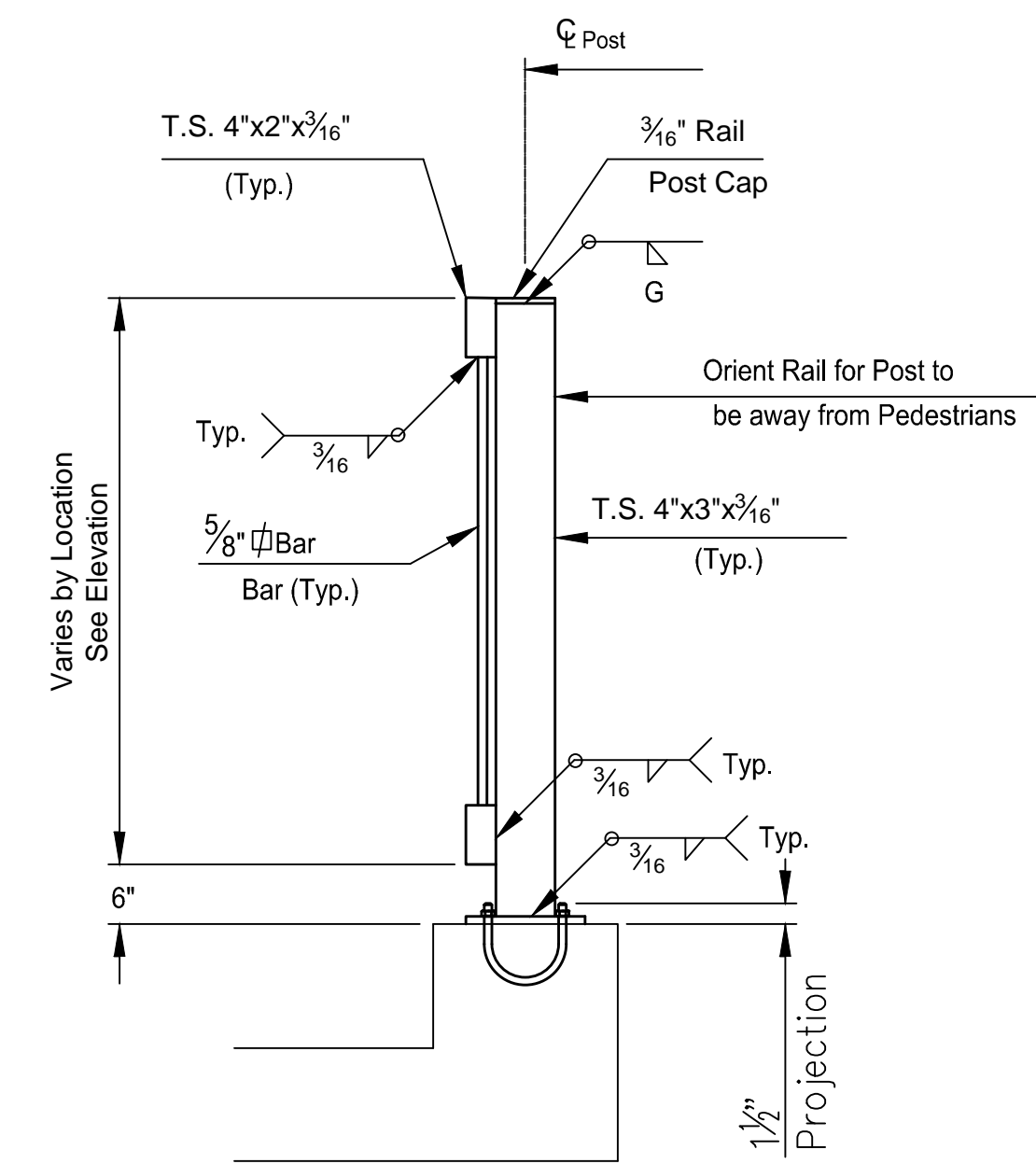
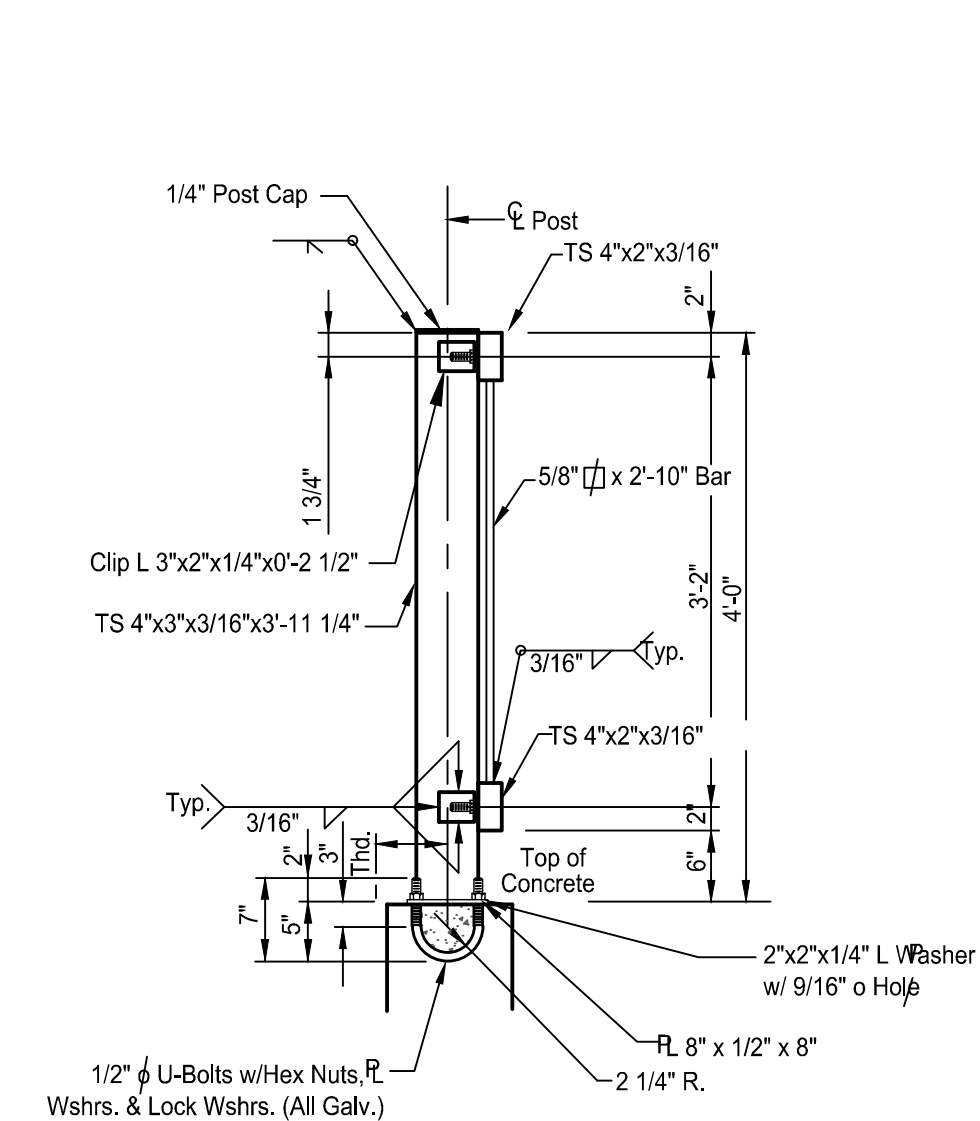
BAR IS ONE INCH ON ORIGINAL DRAWING
IF NOT ONE INCH ON THIS SHEET, ADJUST SCALES ACCORDINGLY.

DRAWING NUMBER

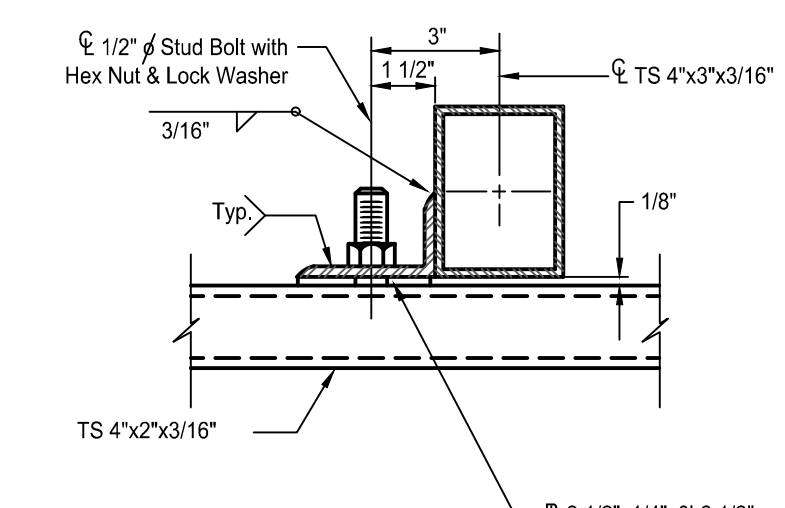
SHEET NUMBER **6** OF **9**



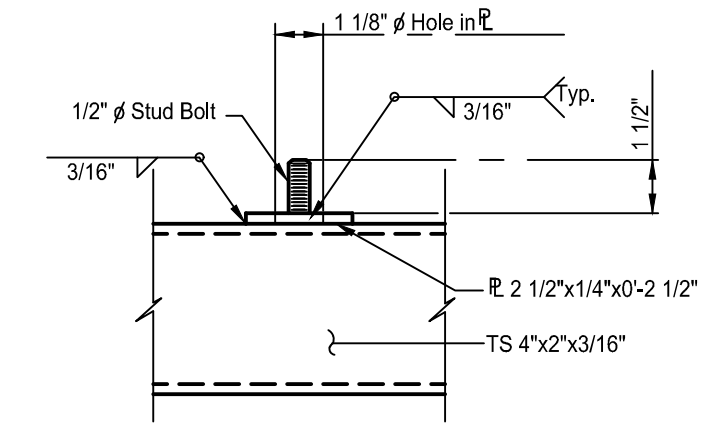
26TH AND FOUNTAIN



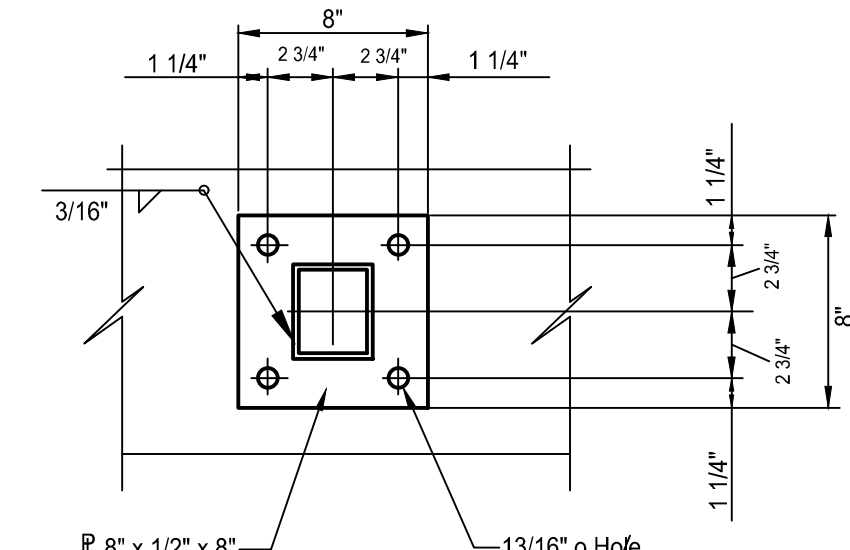
TYPICAL HUBGUARD POST
Not to Scale



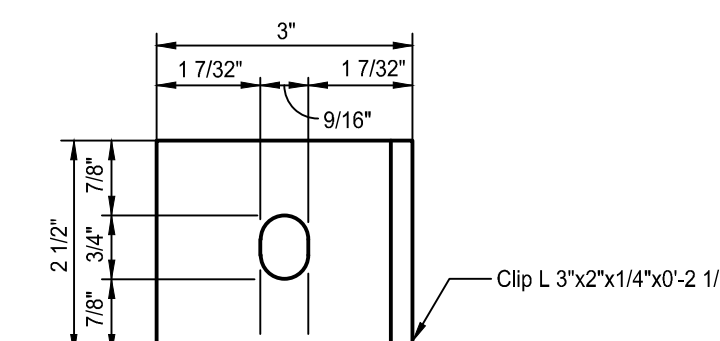
RAIL CONNECTION DETAIL
Not to Scale



STUD BOLT DETAIL
Not to Scale



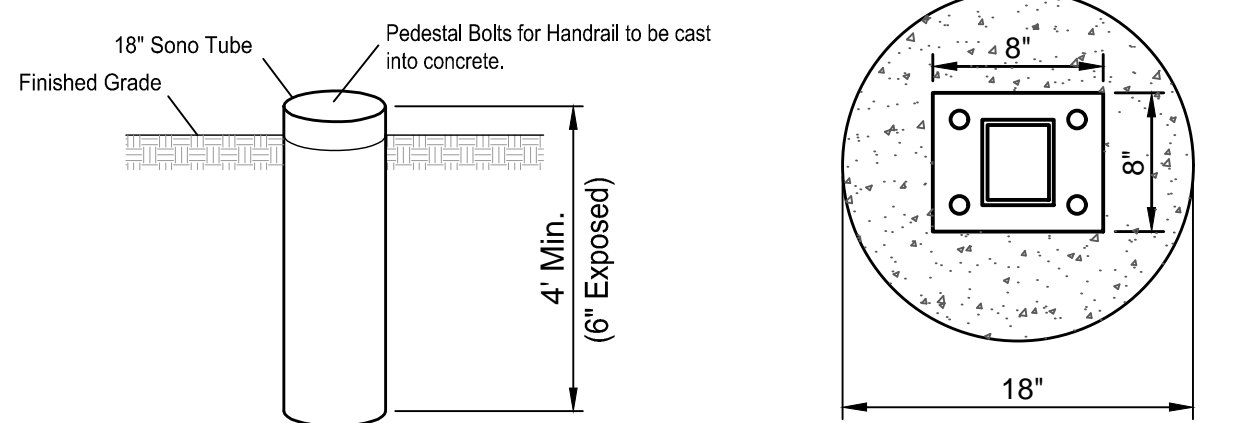
BASE PLATE DETAIL
Not to Scale



CLIP DETAIL
Not to Scale

BRIDGE HANDRAIL NOTES:

- The rail members shall conform to ASTM Designation A36.
- Rail shall be fabricated in lengths to include a minimum of two and a maximum of three panels. Posts shall be set vertical. Shims may be used between concrete and base plates of posts.
- All parts of Bridge Handrail shall be painted Black. Shop and field coats shall conform to organic or inorganic Zinc for primer or equivalent, and "High-Build Polyurethane Finish Coat" at the Standard Specifications for State Road and Bridge Construction, 1990 Edition, Kansas Department of Transportation.
- All materials, equipment and labor necessary for the installation of the Handrail on the bridge shall be subsidiary to the bid item for "Handrail".
- Handrail shall be approved by Engineer prior to painting.
- Contractor to submit color chart to Engineer for approval. Touch Up: All bolts, nuts and studs and other small areas of damaged paint (10 S.F. or less) requiring touch up will be prepared and painted w/approved aluminum epoxy mastic primer.



SONO TUBE DETAIL
Not to Scale

SONO TUBE POST CONNECTION
Not to Scale

Note: Materials, Labor and incidentals associated with Sonotube installation shall be incidental to the bid item for Handrail