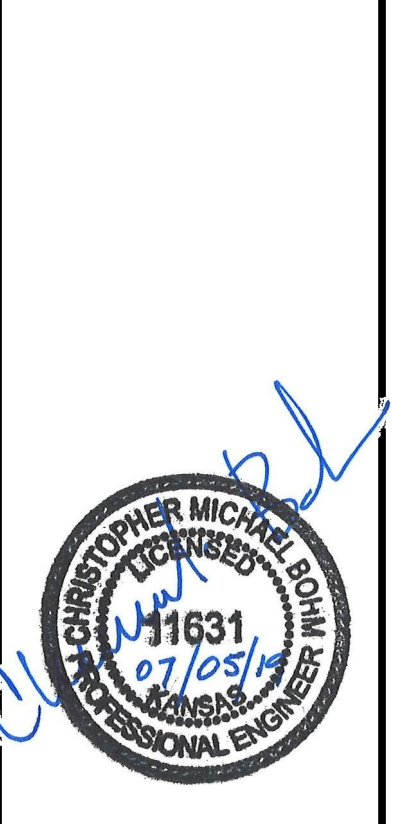




© 2019 GARVER, LLC
 THIS DOCUMENT, ALONG WITH THE IDEAS AND DESIGNS CONVEYED HEREIN, SHALL BE CONSIDERED INSTRUMENTS OF PROFESSIONAL SERVICE AND ARE PROPERTY OF GARVER, LLC. ANY USE, REPRODUCTION, OR DISTRIBUTION OF THIS DOCUMENT, ALONG WITH THE IDEAS AND DESIGN CONTAINED HEREIN, IS PROHIBITED UNLESS AUTHORIZED IN WRITING BY GARVER, LLC OR EXPLICITLY ALLOWED IN THE GOVERNING PROFESSIONAL SERVICES AGREEMENT FOR THIS WORK.



| REV. | DATE | DESCRIPTION | BY |
|------|------|-------------|----|
| | | | |
| | | | |
| | | | |



CITY OF WICHITA
 WICHITA, KANSAS
 CEDAR CREEK ADD,
 PHASE 1

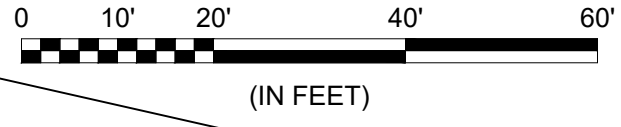
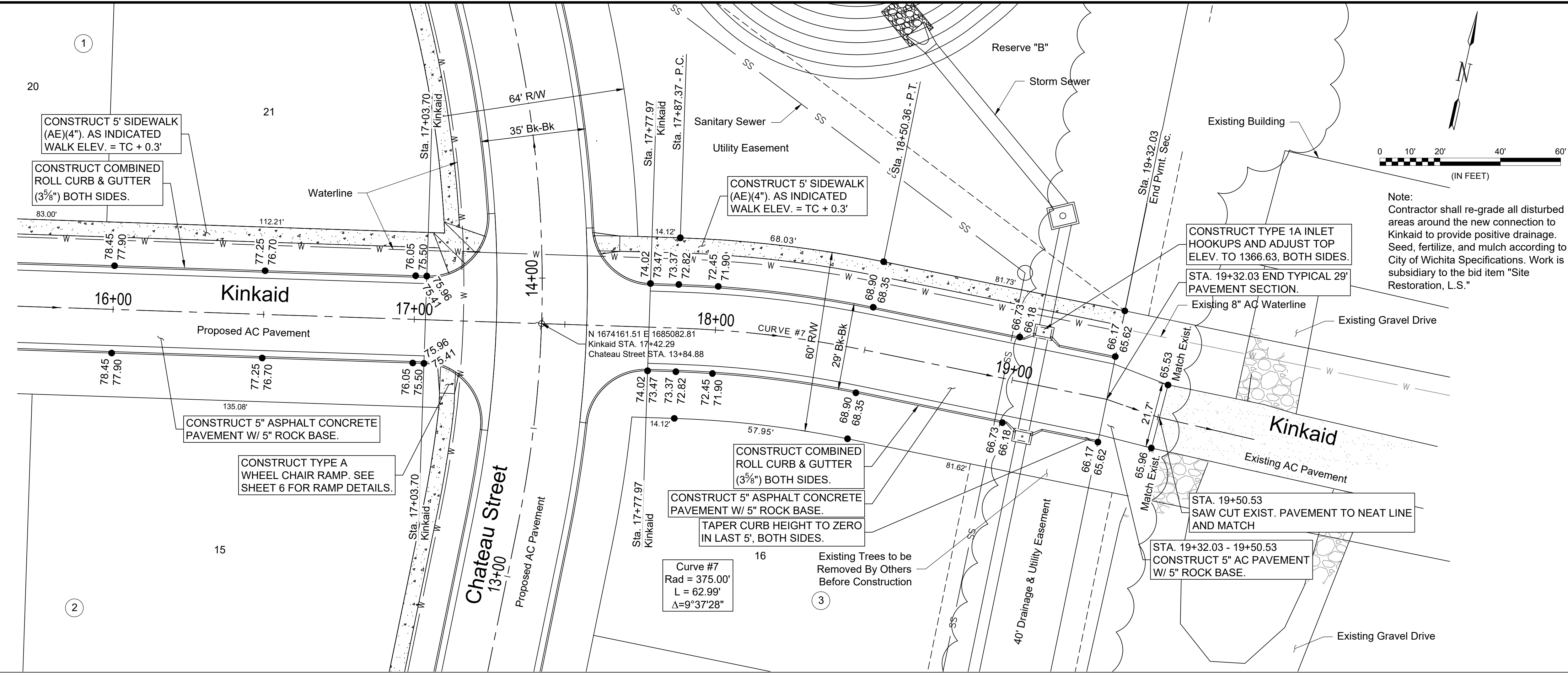
Kinkaid

JOB NO.: 18266039
 DATE: April 2019
 DESIGNED BY: CMB
 DRAWN BY: CDJ

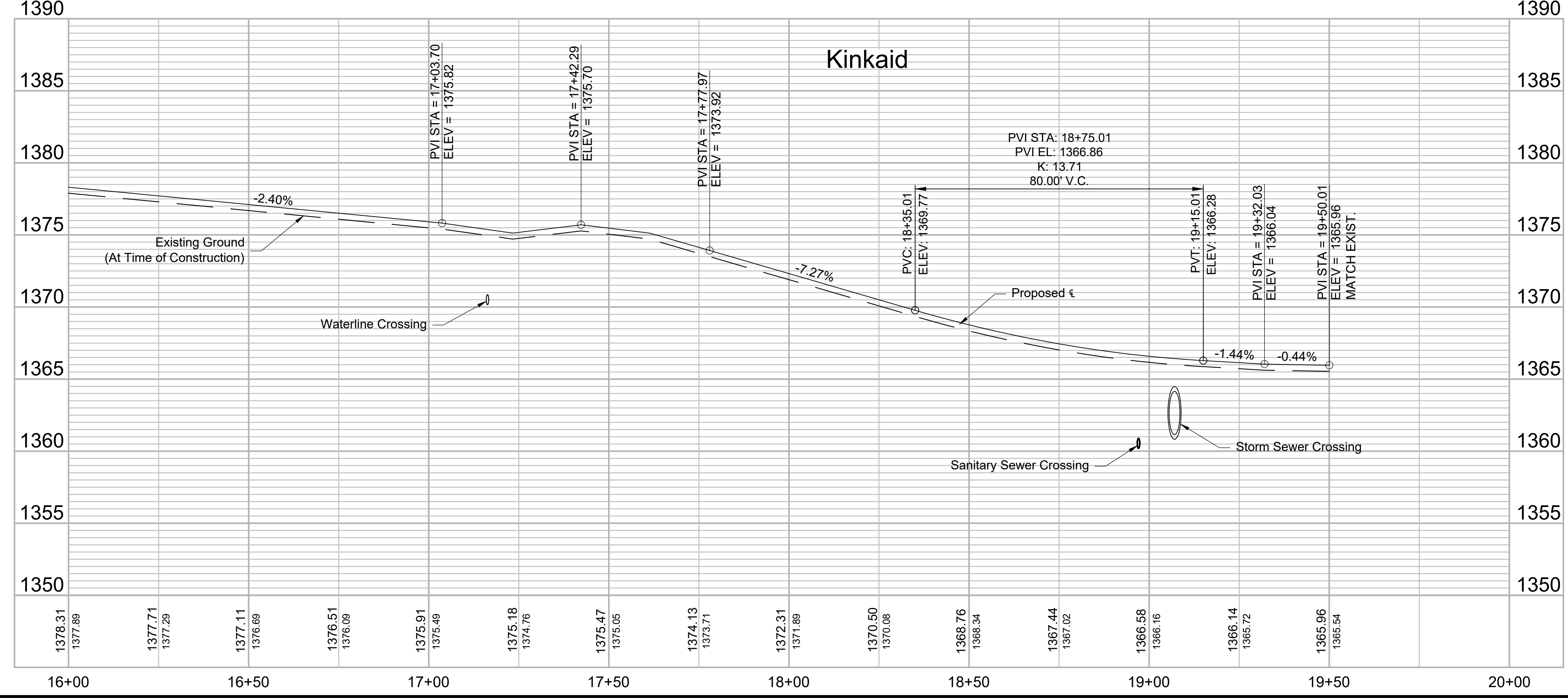
BAR IS ONE INCH ON ORIGINAL DRAWING
 IF NOT ONE INCH ON THIS SHEET, ADJUST SCALES ACCORDINGLY.

DRAWING NUMBER

SHEET NUMBER **14** OF **26**



Note:
 Contractor shall re-grade all disturbed areas around the new connection to Kinkaid to provide positive drainage. Seed, fertilize, and mulch according to City of Wichita Specifications. Work is subsidiary to the bid item "Site Restoration, L.S."



File: L:\2018\18266039 - Cedar Creek Phase 1\Drawings\C3DIPaving\Kinkaid (3).dwg Last Save: 7/5/2019 9:51 AM Last saved by: CDJurey
 Last plotted by: Jurey, Caleb D. Plot Date: 7/8/2019 9:41 AM Plotter used: None Plot Scale: 1:2.5829