

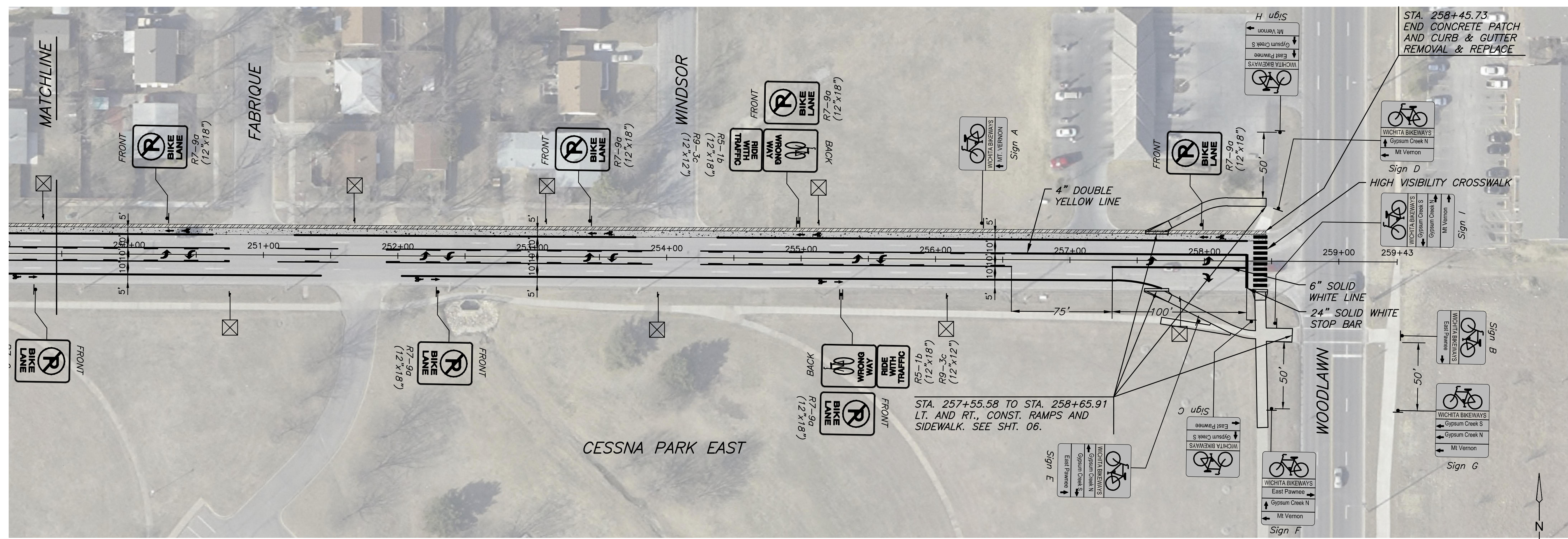
STREET IMPROVEMENT PLANS FOR
MT. VERNON BIKE LANES
FROM OLIVER TO WOODLAWN

©2017 MKEC Engineering All Rights Reserved
www.mkec.com
These drawings and their contents, including, but not limited to, all concepts, designs, & ideas are the exclusive property of MKEC Engineering (MKEC), and may not be used or reproduced in any way without the express consent of MKEC.

PLAN SHEET - STA. 249+50 TO STA. 258+50

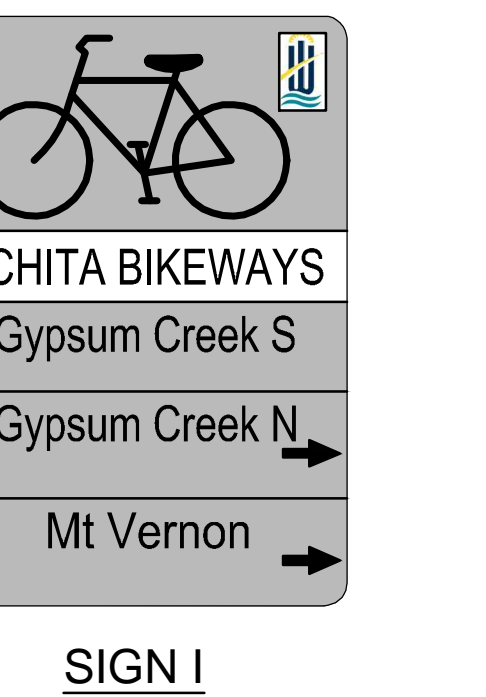
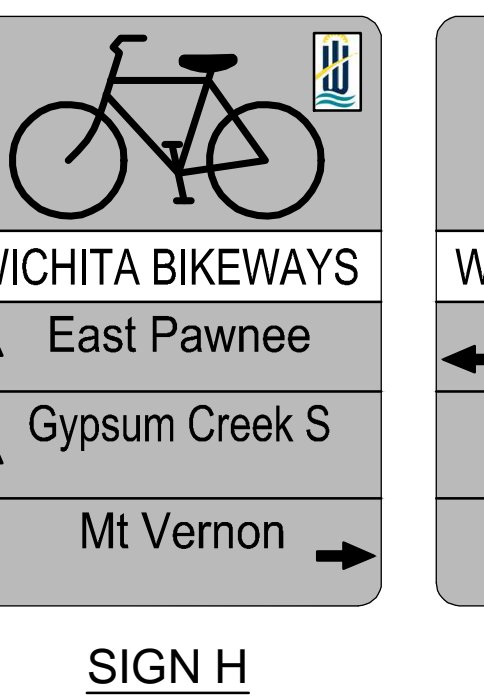
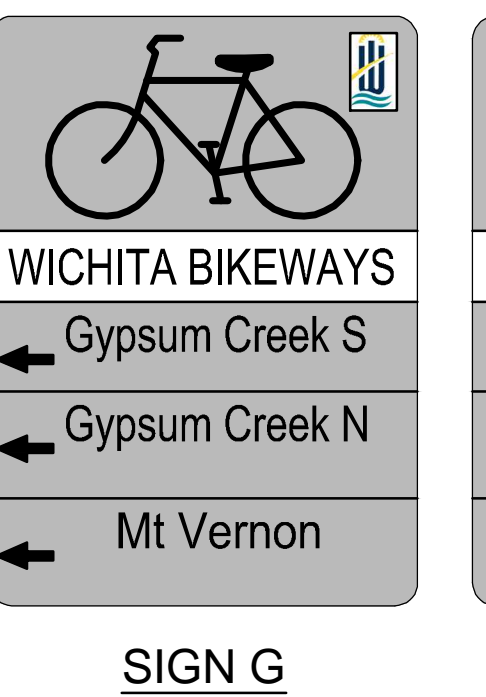
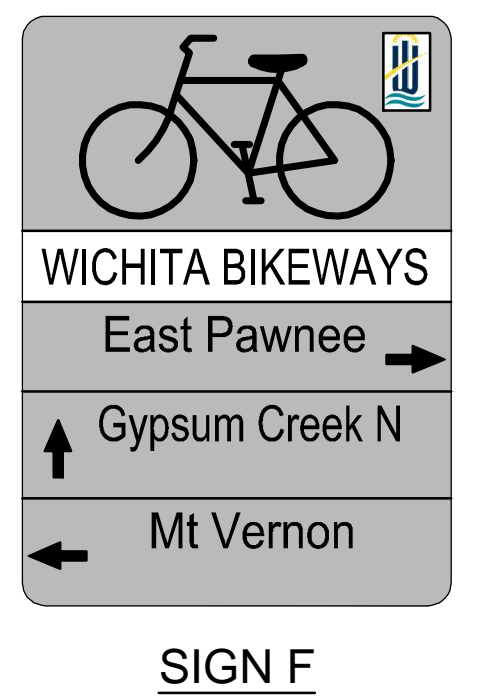
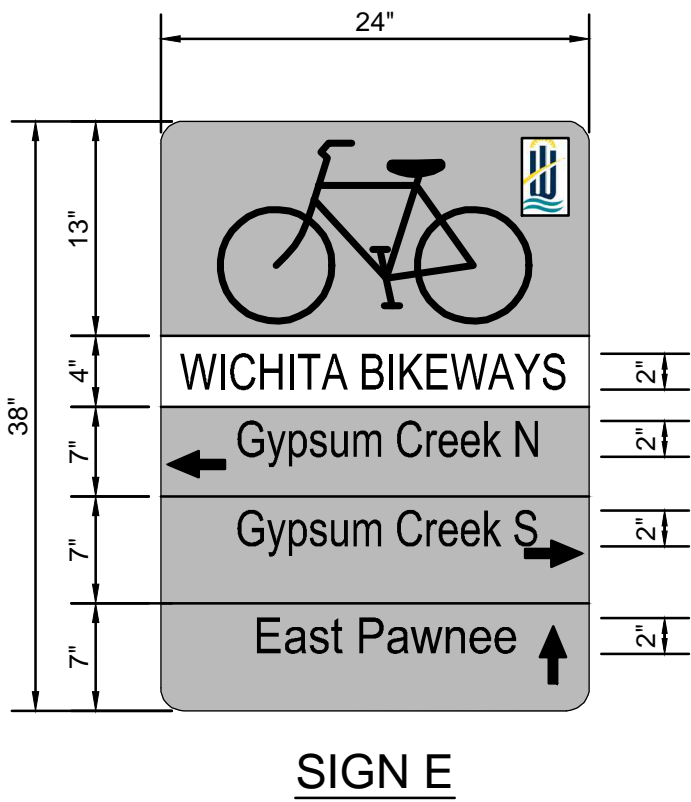
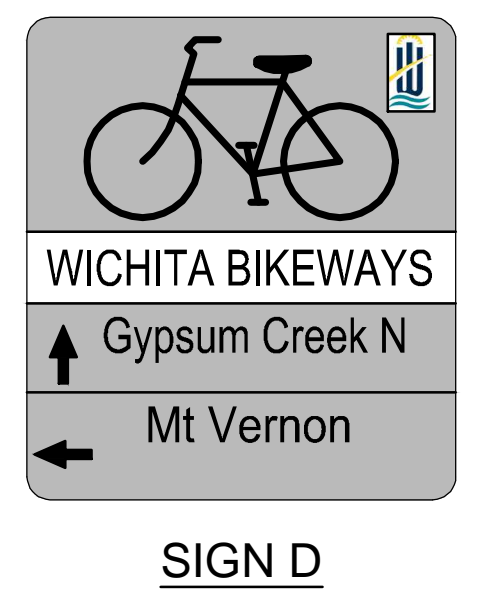
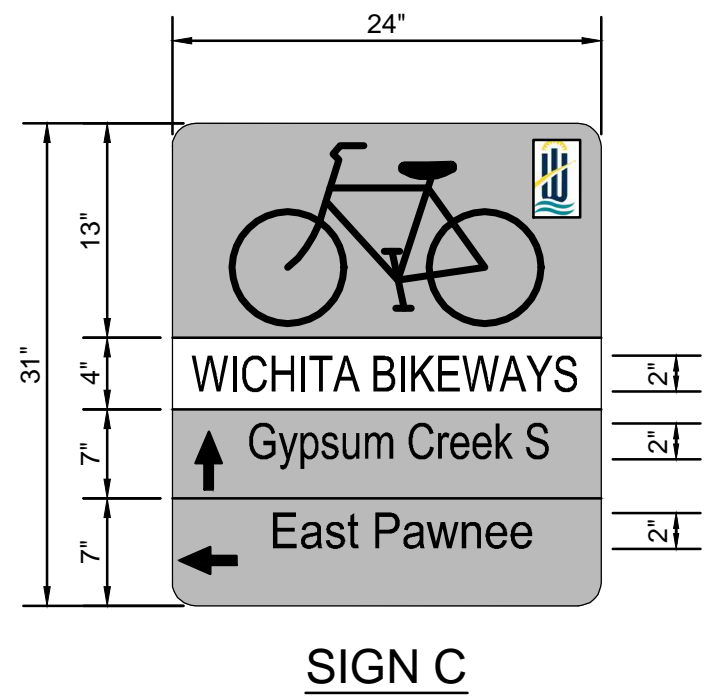
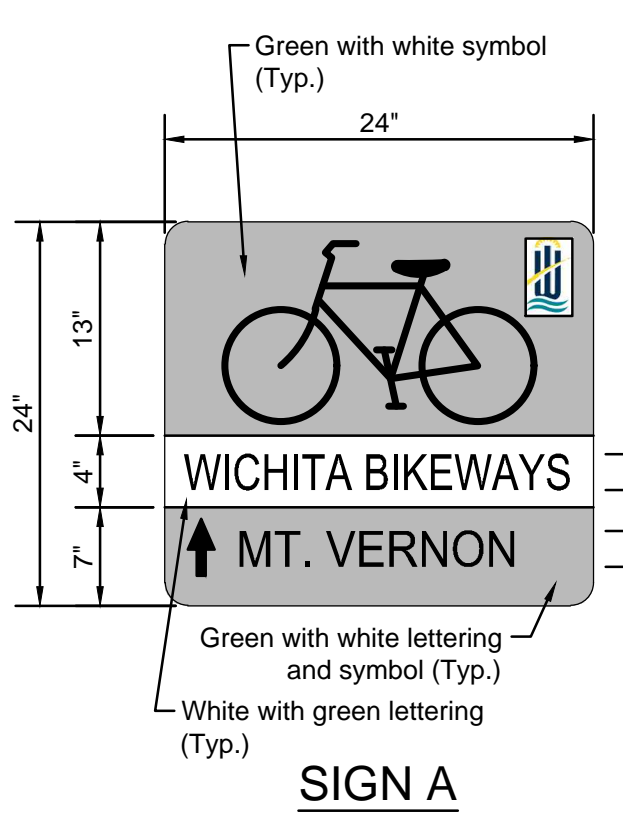
PROJECT NO.	472-85295	
DATE	JULY 7, 2017	
SCALE	1"=40'	
DESIGNED	DRAWN	CHECKED
JRA	RAM	JRA

NO.	REVISION	DATE



LEGEND

- Concrete Patch
- AC Patch
- Concrete Curb & Gutter Removed and Replaced
- Wheelchair Ramp Removed and Replaced (Including Sidewalk)
- Wheelchair Ramp Removed (Including Sidewalk)
- Remove Existing "No Parking" Sign



Notes:
All lettering and symbols to be retroreflective.
Destination text to be 2" minimum height.
Time and distance text to be 1.25" minimum height.
Text style = Clearview Highway.
Color: Green with white.
All special signs shall conform to the "Wichita Bicycle Wayfinding System Plan".