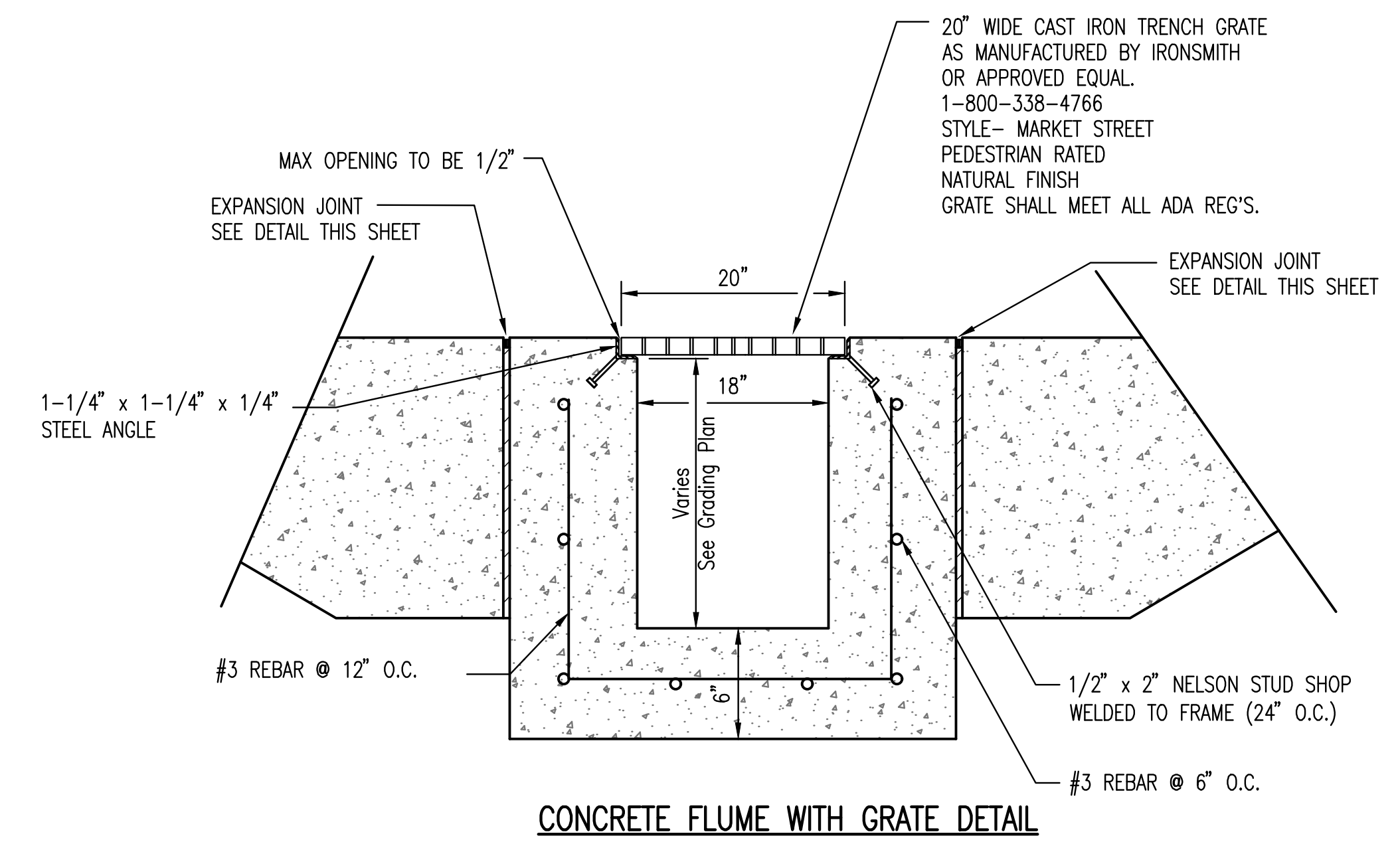
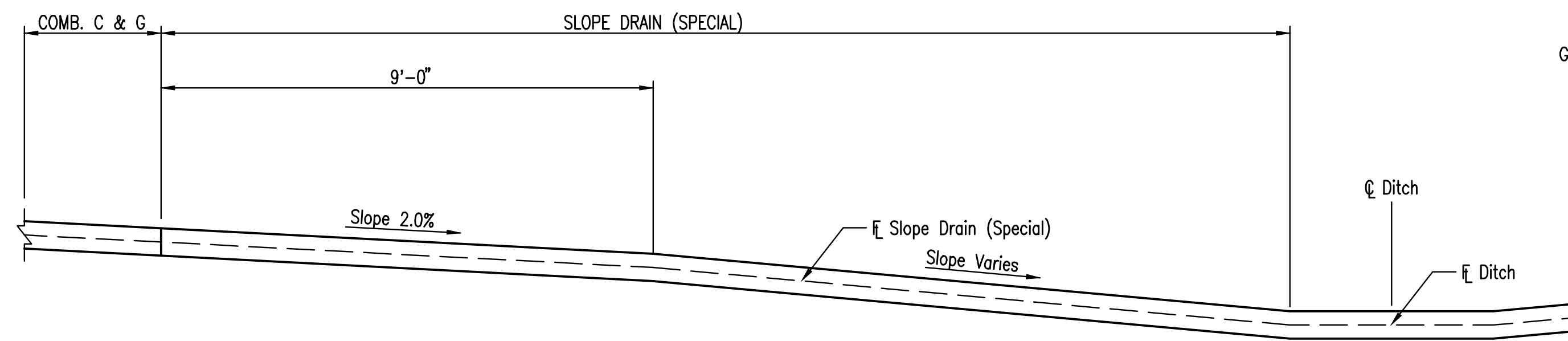


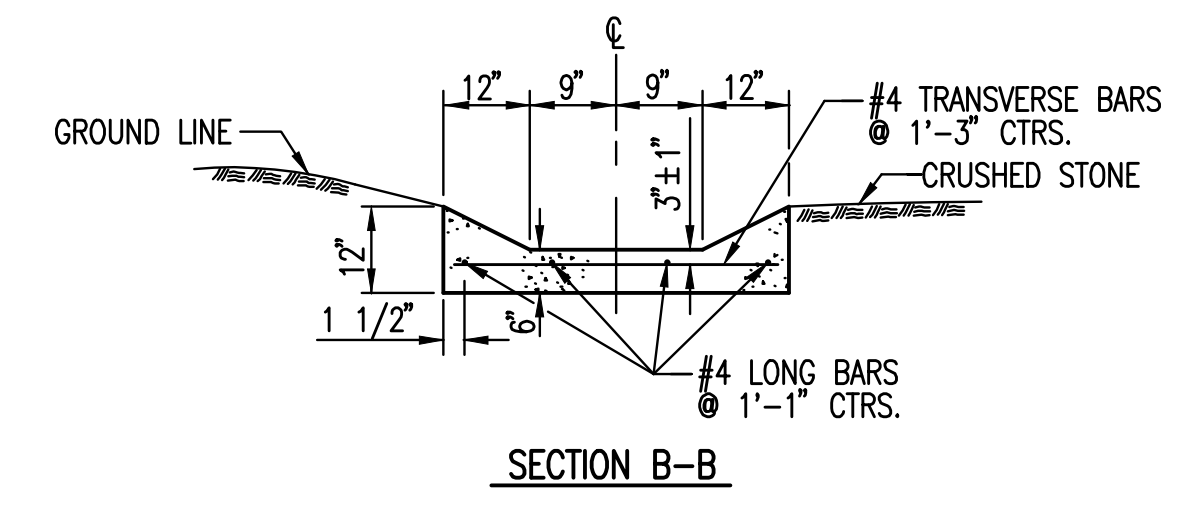
TYPICAL PLAN



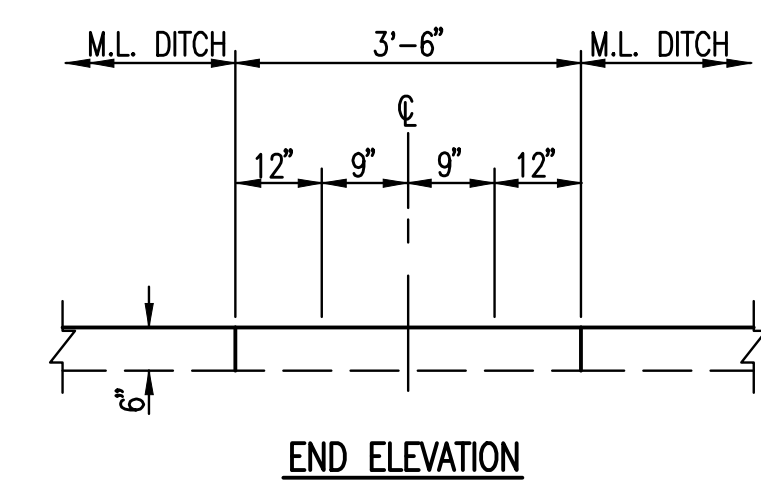
CONCRETE FLUME WITH GRATE DETAIL



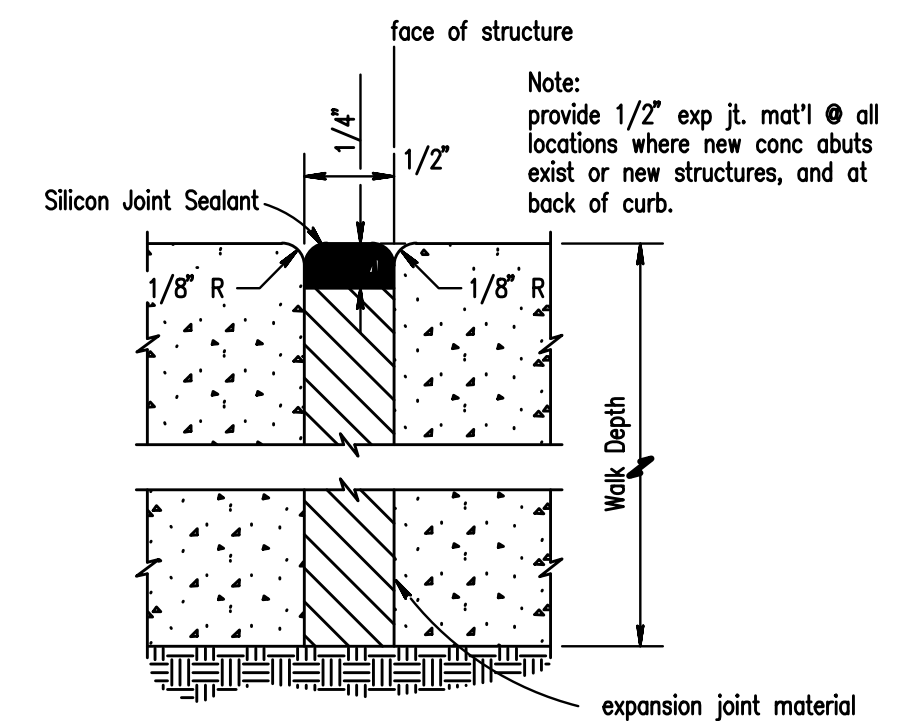
SECTION A-A



SECTION B-B



END ELEVATION



EXPANSION JOINT (EJ)

NOTE: USE CONCRETE CLASS II (3000 psi)(AE) THROUGHOUT. THE ENTIRE AREA OF THE SLOPE DRAIN (SPECIAL) BELOW THE CURBS, TO BE POURED AND STRUCK OFF WITH A UNIFORM THICKNESS OF 6". THE CURBS ARE TO BE APPLIED IN THE SAME MANNER AND USING THE SAME METHODS AS FOR EDGE CURB. REINFORCING STEEL TO BE DEFORMED #4 BARS.

SLOPE DRAIN (SPECIAL)

Saved: 01-24-2019 8:58:29 AM by: CP
 Plot Scale: 1:1 01-24-2019 10:47:58 AM by: CP
 U:\Wichita-Civil\2017\170394\001\Main-Trans\Drawings\170394-001-15C-SLOPE DRAIN AND CONCRETE FLUME DETAILS

No.	Revision	By	Date
RIDGE ROAD SIDEWALK IMPROVEMENTS 29TH STREET NORTH TO VILLAGE CIRCLE SLOPE DRAIN AND CONCRETE FLUME DETAILS GARY JANZEN, P.E. - CITY ENGINEER CITY OF WICHITA PROJECT NO. 472-85395			
		PROFESSIONAL ENGINEERING CONSULTANTS, P.A. 303 SOUTH TOPEKA WICHITA, KS 67202 316-262-2691 www.pec1.com	
Designed by	CKC	Job No.	31-170394-001
Drawn by	CP	Date	January 2019
			Sht. 15 of 45