

**UTILITIES CONTACTS**

ZACH LAWS  
WESTAR ENERGY  
1900 E. CENTRAL (3RD FLOOR)  
PO BOX 208  
WICHITA, KS 67201  
316-261-6264

JASON EDWARDS  
AT&T (DISTRIBUTION)  
WICHITA CENTRAL UNIT  
154 N. BROADWAY, RM. 210  
WICHITA, KS 67202  
316-268-2008

MARC HENDERSON  
COX COMMUNICATIONS  
ENGINEERING DEPT.  
901 GEORGE WASHINGTON BLVD.  
WICHITA, KS 67211  
(316) 260-7745

KELLY KRAUS AND SUZETTE WILSON  
BLACK HILLS ENERGY  
2330 N. HOVER RD.  
WICHITA, KS 67205  
KELLY KRAUS (316) 941-1628  
SUZETTE WILSON (316) 941-1631

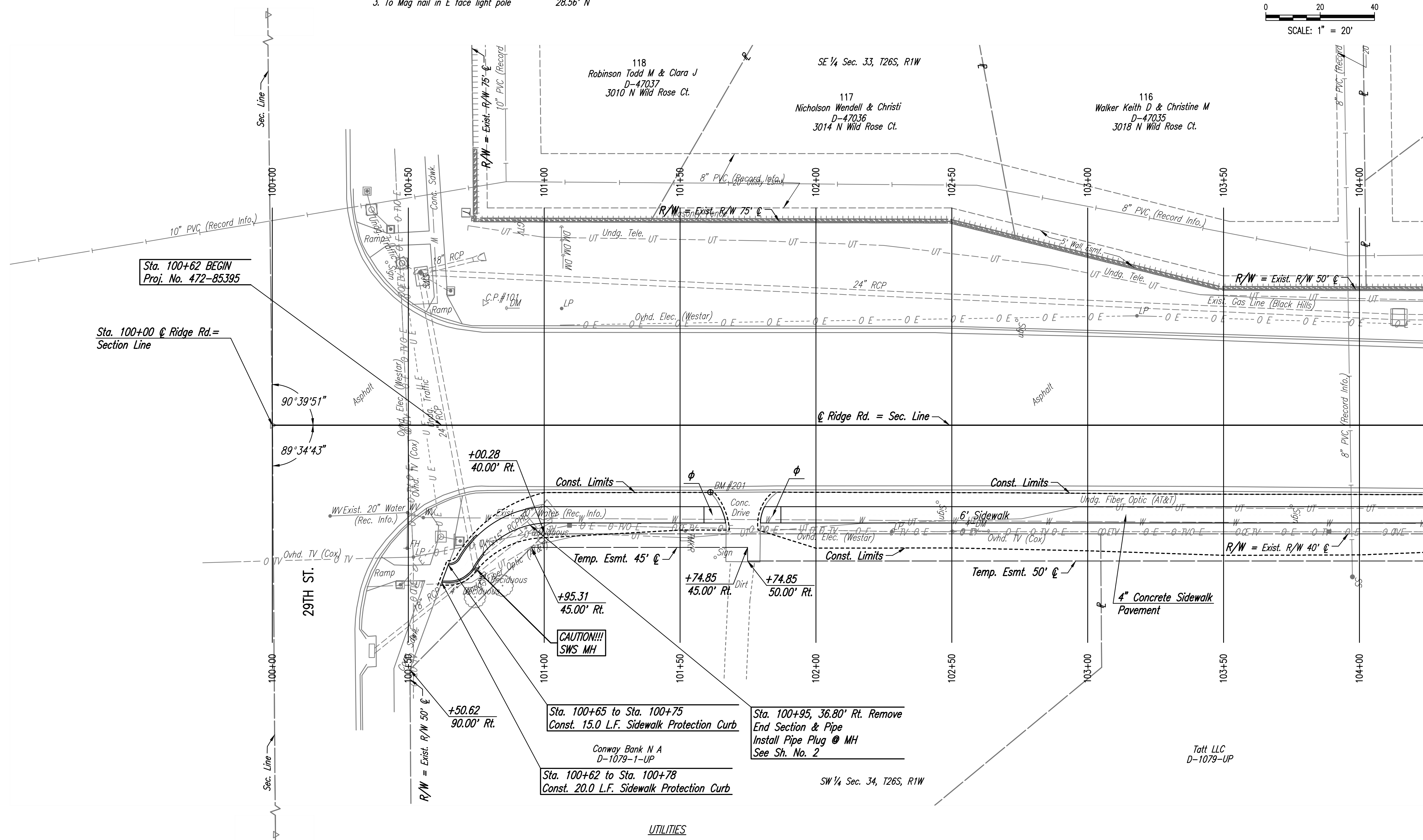
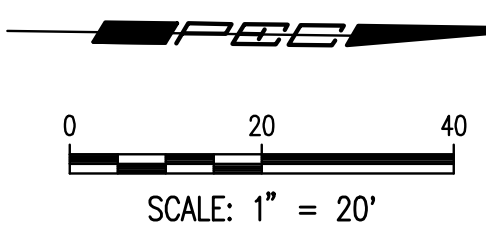
LADONNA LAWRENZ (SANITARY SEWER)  
WICHITA WATER UTILITIES  
8TH FLOOR - CITY HALL  
455 N. MAIN  
WICHITA, KS 67202  
(316) 268-4329

GREG LOLLEY (WATERLINES)  
WICHITA WATER UTILITIES  
8TH FLOOR - CITY HALL  
455 N. MAIN  
WICHITA, KS 67202  
(316) 268-4334

JOE HICKLE  
STORM WATER MANAGEMENT (STORM SEWER)  
8TH FLOOR - CITY HALL  
455 N. MAIN  
WICHITA, KS 67202  
316-268-4307

P.I. @ Sta. 100+00.00=  
SW Cor. Sec. 34, T26S, R1W  
N 1,704,103.355 E 1,622,832.034  
1. See Reference Below

CP #101 45.09' Lt. @ Sta. 100+78.21  
1/2" rebar W/PEC Cap NW Cor. Int. 29th N & Ridge Rd.  
N 1,704,180.939 E 1,622,785.885  
1. To SE cor. conc. wall 30.25' WSW  
2. To NE cor. crosswalk base 12.59' SSW  
3. To Mag nail in E face light pole 28.56' N



REMOVAL OF EXISTING STRUCTURES *		
STATION	SIDE	ITEM
100+98	Rt.	End Section & RCPHE

\* For Information Only

**UTILITIES**

- |                   |                     |
|-------------------|---------------------|
| Cable TV          | Cox Communications  |
| Gas               | Black Hills Energy  |
| Power             | Westar Energy       |
| Sanitary Sewer    | City of Wichita     |
| Storm Water Sewer | City of Wichita     |
| Communications    | AT&T (Distribution) |
| Water             | City of Wichita     |

**LEGEND**

φ Wheelchair Ramp without Detectable Warning

S 1/4 Cor. Sec. 33, T26S, R1W  
N 1,704,036.706 E 1,620,192.409  
1. Found 1/2" Pipe in a Thimble 3 1/2" Below Grass Median Surface 68.21' ESE  
2. To 3 Nails in the W face of a concrete pole  
3. To a 40d Nail and washer in the SW face of a high voltage pole 59.51' NW  
4. To a stamped "S" in the top of curb 28.83' ENE

SW Cor. Sec. 34, T26S, R1W  
N 1,704,103.355 E 1,622,832.034  
1. Found 1/2" Pipe 2" Below Concrete Surface 107.50' SW  
2. To the NE cor. of a concrete wall 77.46' SSE  
3. To 3 Nails in the W face of a high voltage pole 78.33' NW  
4. To Chiseled cross on the NW face of a raised dome of sanitary sewer MH 59.99' NNE  
5. To the top center nut of a fire hydrant

S 1/4 Cor. Sec. 34, T26S, R1W  
N 1,704,158.530 E 1,625,458.253  
1. Found Baughman Cap in Thimble 1.30' NNW  
2. To reference monument in thimble 20.35' S  
3. To "+" Cut in top of curb 74.60' ENE  
4. To PK in utility pole 25.67' NW  
5. To "+" Cut in top of curb

BM #201-Chiseled "d" on E. back of curb Ridge Rd. at S. side of first drive N. of 29th St. N.  
24.70' Rt. @ Sta. 101+61.18 Elev.=1328.07 (NAVD88)

No.	Revision	By	Date
RIDGE ROAD SIDEWALK IMPROVEMENTS 29TH STREET NORTH TO VILLAGE CIRCLE <b>PLAN</b> <b>STA. 100+00 TO STA. 104+00</b> GARY JANZEN, P.E. - CITY ENGINEER CITY OF WICHITA PROJECT NO. 472-85395			
PROFESSIONAL ENGINEERING CONSULTANTS, P.A. 303 SOUTH TOPEKA WICHITA, KS 67202 316-262-2691 www.pec1.com			
Designed by	CKC	Job No.	31-170394-001
Drawn by	CP	Date	January 2019
			Sht. 03 of 45

Served: 01-24-2019 9:45:49 AM By: CP  
 Plot Scale: 1" = 20'-24-2019 10:39:22 AM By: CP  
 U:\Wichita-Civil\2017\170394\01\Main-Trans\Drawings\170394-001-03C-PLAN