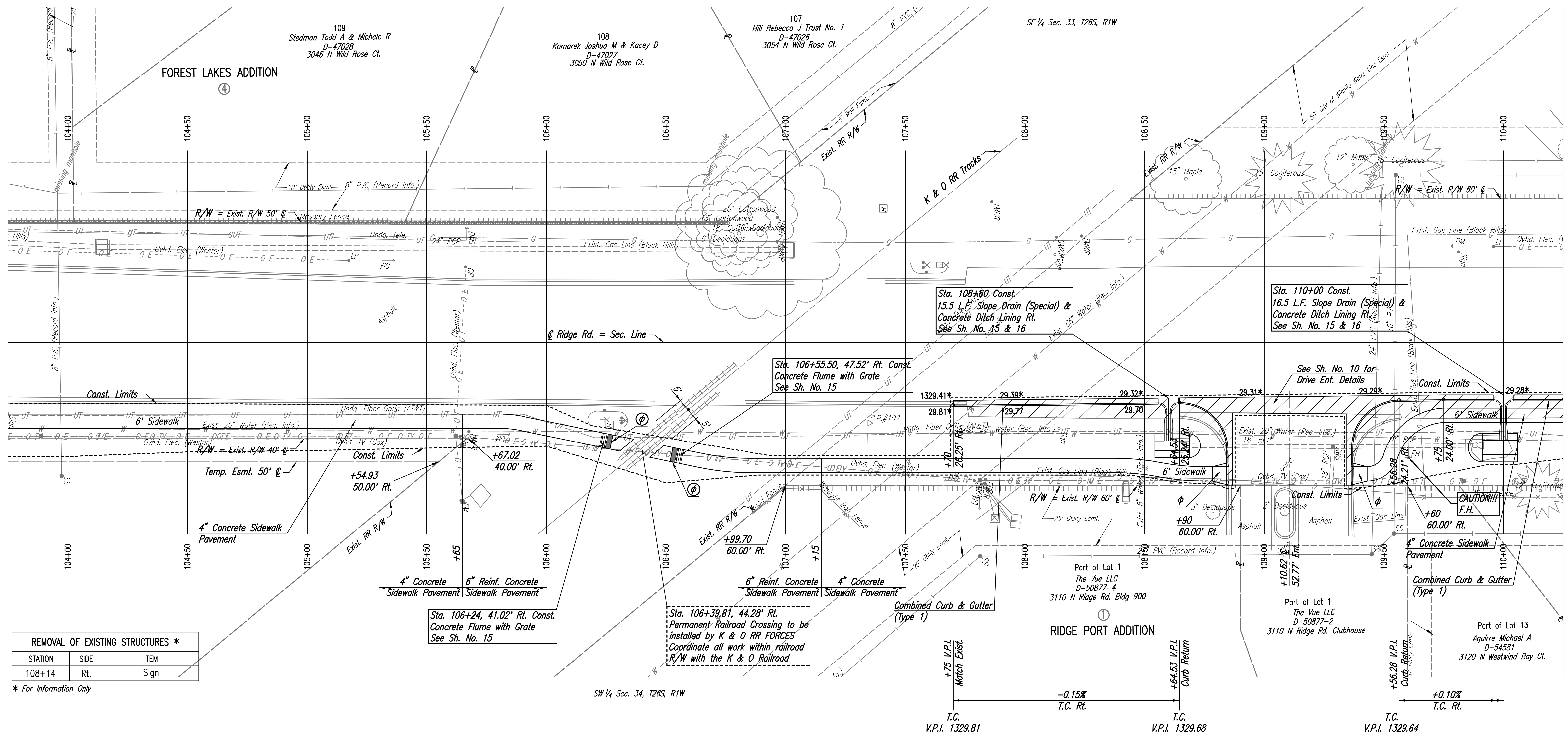
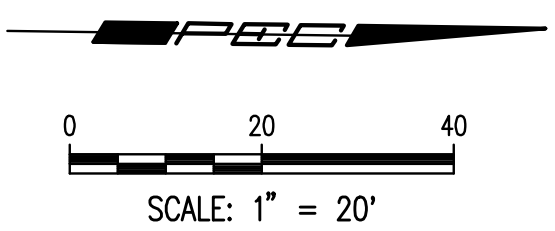


CP #102 33.71' Rt. @ Sta. 107+35.00
 1/2" rebar W/PEC Control Cap E side Ridge Rd. N of RR Tracks
 N 1,704,838.743 E 1,622,855.708
 1. To line of fence SE. 1.00' SW
 2. To back of curb Ridge Rd. 7.05' W
 3. To Mag Nail in Power Pole 52.30' NNE
 4. To fence cor. 45.08' SE



REMOVAL OF EXISTING STRUCTURES *		
STATION	SIDE	ITEM
108+14	Rt.	Sign

* For Information Only

Note: Elevations shown along Curb and Gutter are to High Edge and Top of Curb.

- LEGEND**
- Pavement Removal
 - Wheelchair Ramp with Detectable Warning
 - Wheelchair without Detectable Warning

- UTILITIES**
- Cable TV Cox Communications
 - Gas Black Hills Energy
 - Power Westar Energy
 - Sanitary Sewer City of Wichita
 - Storm Water Sewer City of Wichita
 - Communications AT&T (Distribution)
 - Communications AT&T (Transmission)
 - Water City of Wichita

Sta. 108+60 Const.
 15.5 L.F. Slope Drain (Special) &
 Concrete Ditch Lining Rt.
 See Sh. No. 15 & 16

Sta. 110+00 Const.
 16.5 L.F. Slope Drain (Special) &
 Concrete Ditch Lining Rt.
 See Sh. No. 15 & 16

Sta. 106+55.50, 47.52' Rt. Const.
 Concrete Flume with Grate
 See Sh. No. 15

Sta. 106+24, 41.02' Rt. Const.
 Concrete Flume with Grate
 See Sh. No. 15

Sta. 106+39.81, 44.28' Rt.
 Permanent Railroad Crossing to be
 installed by K & O RR FORCES
 Coordinate all work within railroad
 R/W with the K & O Railroad

CAUTION!!!
 F.H.

Part of Lot 13
 Aguirre Michael A
 D-54581
 3120 N Westwind Bay Ct.

Part of Lot 1
 The Vue LLC
 D-50877-4
 3110 N Ridge Rd. Bldg 900

Part of Lot 1
 The Vue LLC
 D-50877-2
 3110 N Ridge Rd. Clubhouse

Revision		By	Date
No.			
RIDGE ROAD SIDEWALK IMPROVEMENTS 29TH STREET NORTH TO VILLAGE CIRCLE PLAN STA. 104+00 TO STA. 110+00 GARY JANZEN, P.E. - CITY ENGINEER CITY OF WICHITA PROJECT NO. 472-85395			
PROFESSIONAL ENGINEERING CONSULTANTS, P.A. 303 SOUTH TOPEKA WICHITA, KS 67202 316-262-2691 www.pec1.com			
Designed by	CKC	Job No.	31-170394-001
Drawn by	CP	Date	January 2019
			Sht. 04 of 45

Served 01-24-2019 9:49:40 AM by CP
 Plot Scale 1:1 01-24-2019 10:39:48 AM by CP
 U:\Wichita-Civil\2017\170394\001\Main-Trans\Drawings\170394-001-04C-PLAN