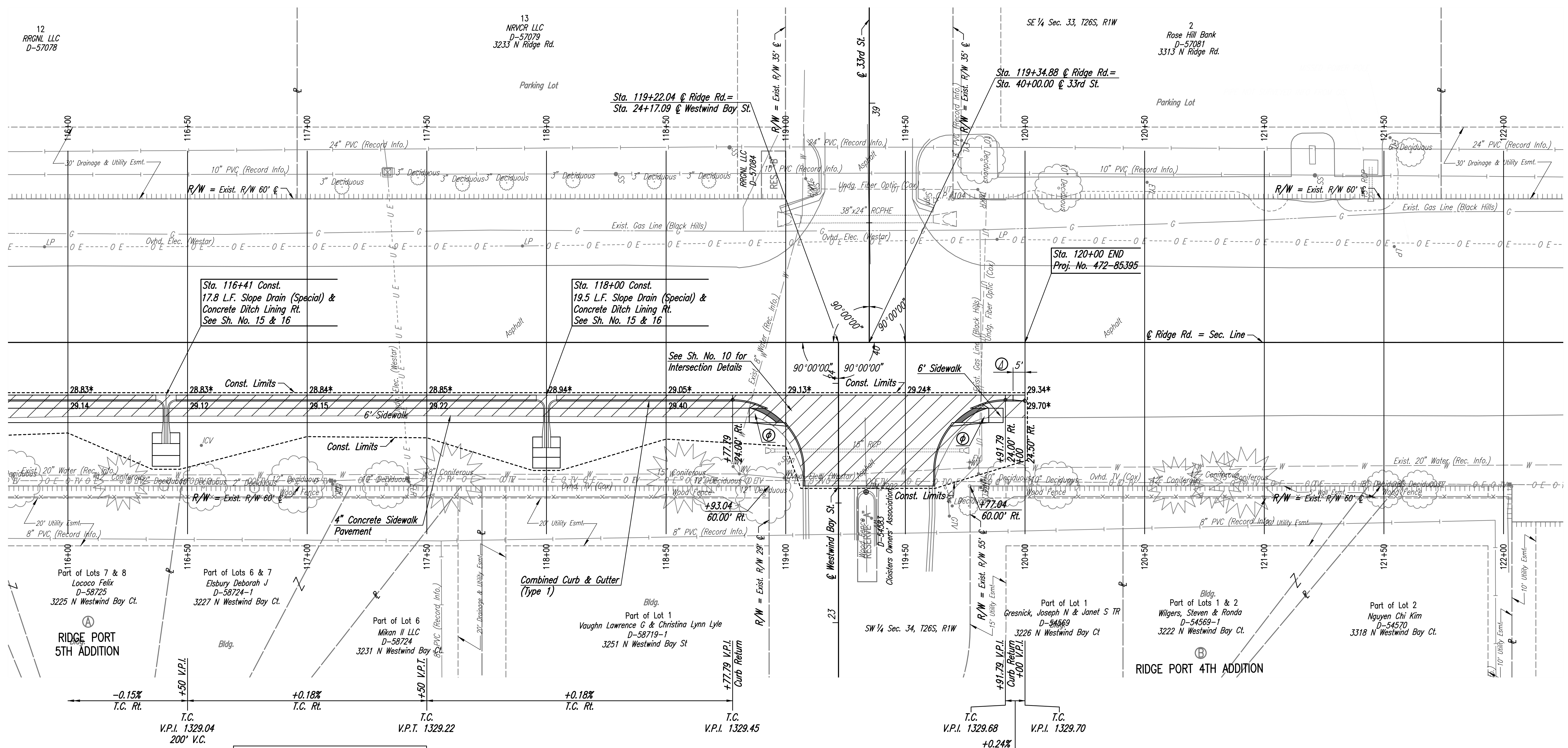
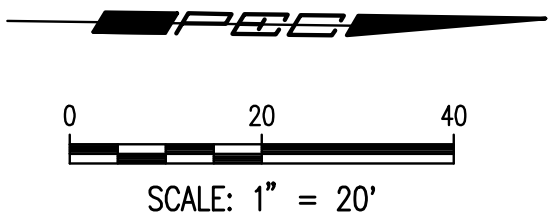


CP #104 59.41' Lt. @ Sta. 119+62.45  
 1/2" rebar W/PEC Control Cap NW cor. 33rd St. N & Ridge Rd.  
 N 1,706,064.810 E 1,622,745.845  
 1. To Mag Nail in L.P.  
 2. To center street sign post  
 3. To N back of curb 33rd St. N.

31.30° NE  
 6.50' SW  
 7.10' S



Sta. 116+41 Const.  
 17.8 L.F. Slope Drain (Special) &  
 Concrete Ditch Lining Rt.  
 See Sh. No. 15 & 16

Sta. 118+00 Const.  
 19.5 L.F. Slope Drain (Special) &  
 Concrete Ditch Lining Rt.  
 See Sh. No. 15 & 16

See Sh. No. 10 for  
 Intersection Details

Sta. 120+00 END  
 Proj. No. 472-85395

Note: Elevations shown along Curb and Gutter  
 are to High Edge and Top of Curb.

- UTILITIES**
- Cable TV
  - Gas
  - Power
  - Sanitary Sewer
  - Storm Water Sewer
  - Communications
  - Water
  - Cox Communications
  - Black Hills Energy
  - Westar Energy
  - City of Wichita
  - City of Wichita
  - AT&T (Distribution)
  - City of Wichita

- LEGEND**
- Pavement Removal
  - Wheelchair Ramp with Detectable Warning
  - Curb Transition

BM #202-Chiseled "B" in center of W. end median of Westwind Bay St.  
 E. side Ridge Rd.  
 62.51' Rt. @ Sta. 119+33.54 Elev.=1331.26 (NAVD88)

| No.  | Revision | By                    | Date          |
|--|----------|-----------------------|---------------|
| RIDGE ROAD SIDEWALK IMPROVEMENTS<br>29TH STREET NORTH TO VILLAGE CIRCLE<br><b>PLAN</b><br>STA. 116+00 TO STA. 120+00<br>GARY JANZEN, P.E. - CITY ENGINEER<br>CITY OF WICHITA PROJECT NO. 472-85395 |          |                       |               |
|  |          |                       |               |
| PROFESSIONAL ENGINEERING CONSULTANTS, P.A.<br>303 SOUTH TOPEKA WICHITA, KS 67202<br>316-262-2691 www.pec1.com  |          |                       |               |
| Designed by  | CKC      | Job No. 31-170394-001 | Sht. 06 of 45 |
| Drawn by   | CP       | Date January 2019     |               |

Scaled 11-06-2018 4:49:39 PM by CP  
 Plot Scale 1:1 01-24-2019 10:40:38 AM by CP  
 U:\Wichita-Civil\2017\170394\001\Main-Trans\Drawings\170394-001-06C-PLAN