

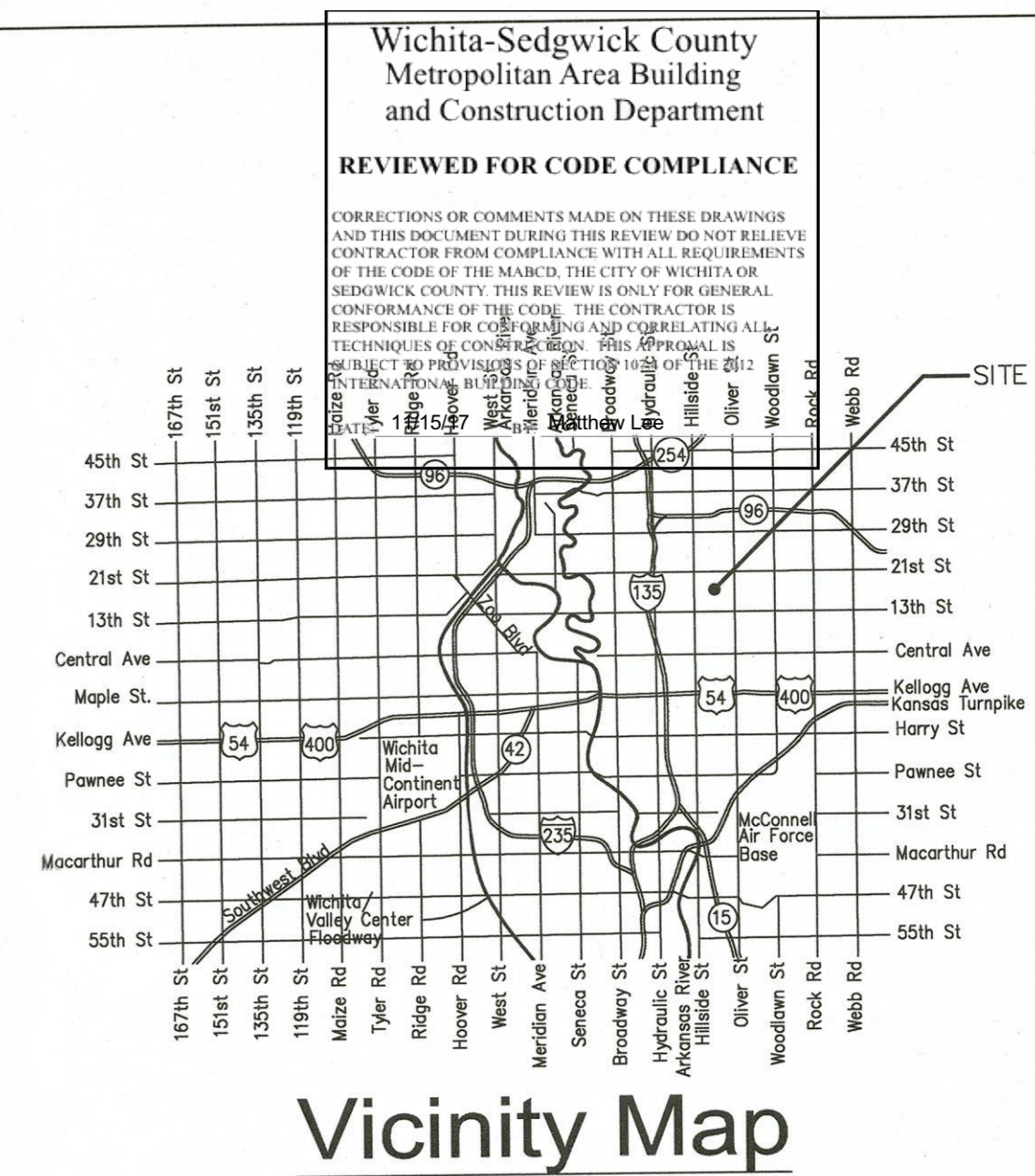
GENERAL NOTES

- THE CONTRACTOR SHALL COMPLY WITH ALL APPLICABLE SAFETY REGULATIONS. ALL STORMWATER CONSTRUCTION SHALL BE COMPLETED FOLLOWING CURRENT CITY STANDARD SPECIFICATIONS AND SPECIAL PROVISIONS.
- CONTRACTOR WILL BE REQUIRED TO PROVIDE NOTICE TO UTILITY COMPANIES A MINIMUM OF SEVENTY-TWO (72) HOURS PRIOR TO ANY EXCAVATION, AS FOLLOWS:
KANSAS ONE-CALL 1-800-344-7233
THE CONTRACTOR MUST NOTIFY THE FOLLOWING IN CASE OF AN EMERGENCY:
AT&T 1-800-246-8464
BLACK HILLS ENERGY 1-800-694-8989
CITY OF WICHITA WATER & SEWER 1-316-219-8921
CITY OF WICHITA STORMWATER 1-316-268-4090
CITY OF WICHITA TRAFFIC 1-316-268-4034
COX COMMUNICATIONS 1-888-249-3530
KANSAS GAS SERVICE 1-888-482-4950
WESTAR ENERGY 1-800-544-4857
- UTILITY SERVICE LINES, POLES, ETC. ARE TO BE ADJUSTED AS NECESSARY BY OTHERS PRIOR TO CONSTRUCTION UNLESS THE PLANS SPECIFICALLY CALL FOR THEIR ADJUSTMENT BY THE CONTRACTOR OR UNLESS THE PLANS SPECIFICALLY IDENTIFY A UTILITY TO BE ADJUSTED BY ITS OWNER DURING CONSTRUCTION. EXISTING UTILITIES AND THEIR LOCATION, AS SHOWN ON THE PLANS, REPRESENT THE BEST INFORMATION OBTAINABLE FOR DESIGN. THE CONTRACTOR WILL BE REQUIRED TO WORK AROUND EXISTING UTILITIES WITHIN THE RIGHT-OF-WAY WHICH DO NOT CONFLICT WITH PROPOSED CONSTRUCTION.
- RUBBLE FROM THE REMOVAL OF MISCELLANEOUS STRUCTURES AND EXCESS EXCAVATION WHICH IS TO BE WASTED SHALL BE DISPOSED OF ON SITES TO BE PROVIDED BY THE CONTRACTOR. THESE SITES SHALL BE APPROVED BY THE ENGINEER AS TO SUITABILITY, APPEARANCE AND SITE LOCATION. LOCATIONS, IN THE OPINION OF THE ENGINEER, THAT WILL LEAVE AN UNSIGHTLY APPEARANCE WILL NOT BE APPROVED. ALL DISPOSAL SITES MUST BE APPROVED BY THE KANSAS DEPARTMENT OF HEALTH AND ENVIRONMENT. MATERIAL EITHER STOCKPILED OR DISPOSED OF IN A FLOOD PLAIN WILL REQUIRE A KANSAS STATE BOARD OF AGRICULTURE PERMIT. ANY MATERIAL DUMPED IN WATERS OF THE UNITED STATES OR WETLANDS IS SUBJECT TO U.S. CORPS. OF ENGINEERS PERMITTING REGULATIONS. ANY MATERIAL BURIED OR STOCKPILED BEYOND APPROVED CONSTRUCTION LIMITS WILL REQUIRE ADDITIONAL ARCHAEOLOGICAL INVESTIGATIONS UNLESS BURIED IN A PREVIOUSLY APPROVED BORROW LOCATION.
- TREES AND SHRUBS IN PUBLIC RIGHT-OF-WAY WHICH ARE IN DIRECT CONFLICT WITH PROPOSED NEW CONSTRUCTION SHALL BE REMOVED BY THE CONTRACTOR WITH THE CITY ENGINEER'S APPROVAL. TREES AND SHRUBS WHICH ARE NOT IN DIRECT CONFLICT WITH PROPOSED NEW CONSTRUCTION SHALL BE SAVED AND PROTECTED FROM DAMAGE.
- THE CONTRACTOR SHALL GIVE ALL PROPERTY OWNERS AND/OR TENANTS OF DEVELOPED PROPERTY ADJUTING THE CONSTRUCTION OF THIS PROJECT A MINIMUM OF TEN (10) DAYS NOTICE PRIOR TO START OF CONSTRUCTION.
- THE CONTRACTOR SHALL BE RESPONSIBLE FOR PRESERVING PROPERTY IRONS. THE CONTRACTOR WILL BE REQUIRED TO RE-ESTABLISH ANY PROPERTY IRONS WHICH ARE DAMAGED OR DESTROYED BY HIS CONSTRUCTION OPERATIONS. SUCH IRONS SHALL BE RE-ESTABLISHED BY A LICENSED LAND SURVEYOR IN ACCORDANCE WITH STATE LAWS.
- THE ENGINEERING DIVISION SHALL FIELD LOCATE WATER VALVES ONE TIME DURING CONSTRUCTION WHEN REQUESTED BY THE CONTRACTOR. IT SHALL BE THE CONTRACTOR'S RESPONSIBILITY TO PRESERVE SUCH FIELD LOCATIONS DURING THE CONSTRUCTION PROCESS. WATER VALVES, VALVE BOXES OR FIRE HYDRANTS DAMAGED DURING CONSTRUCTION SHALL BE REPAIRED BY CONTRACTOR AT HIS OWN EXPENSE. VALVE BOXES AND WATER METERS WITHIN THE PROJECT LIMITS SHALL BE ADJUSTED TO MATCH FINAL GRADES BY THE CONTRACTOR.
- THE CONTRACTOR SHALL NOTIFY THE INSPECTING ENGINEER AND TOM MASON AT 316-268-4574 WITH THE CITY OF WICHITA WITH THE ANTICIPATED CONSTRUCTION START DATE AND NOTIFY THEM OF PROJECT COMPLETION. STAKING AND INSPECTION FOR THIS PROJECT WILL BE THE RESPONSIBILITY OF THE CONTRACTOR.

- IF TRAFFIC WILL BE IMPACTED BY CONSTRUCTION, A TRAFFIC CONTROL PLAN MUST BE SUBMITTED AND APPROVED BY THE CITY TRAFFIC ENGINEER, BRIAN COON AT TRAFFIC@WICHITA.GOV BEFORE CONSTRUCTION CAN BEGIN. THE CONTRACTOR SHALL BE RESPONSIBLE FOR ALL TRAFFIC CONTROL MEASURES TO FACILITATE CONSTRUCTION. ALL CONSTRUCTION ZONE MARKINGS AND SIGNAGE SHALL CONFORM TO THE LATEST VERSION OF THE MANUAL ON UNIFORM TRAFFIC CONTROL DEVICES (MUTCD) AS PUBLISHED BY THE US DEPT. OF TRANSPORTATION, FEDERAL HIGHWAY ADMINISTRATION. ALL COSTS ASSOCIATED WITH CONSTRUCTION MARKINGS AND SIGNAGE SHALL BE THE CONTRACTORS RESPONSIBILITY.
- ANY SIDEWALK, DRIVE APPROACH, OR STREET PAVEMENT IN PUBLIC RIGHT-OF-WAY REMOVED TO CONSTRUCT PROJECT MUST HAVE A PAVEMENT CUT PERMIT AND BE REPLACED BY THE CITY CONTRACTOR. PERMITS CAN BE OBTAINED BY CALLING 316-268-4501 OR 316-268-4480.
- CITY MAINTENANCE OF STORM SEWER ENDS AT THE LAST STRUCTURE IN THE EASEMENT OR RIGHT-OF-WAY.
- CONTRACTOR SHALL LIMIT THE EXTENT OF TRENCH OPEN OVERNIGHT AND WEEKENDS TO LESS THAN 50 FEET.
- THE INSPECTING FIRM SHALL SUBMIT TO THE CITY STORMWATER MAINTENANCE DIVISION A DIGITAL COPY OF THE CCTV INSPECTION OF THE CONDUITS AND STRUCTURES FOLLOWING CONSTRUCTION. THE DIGITAL FILE FORMATION SHALL BE COMPATIBLE WITH THE CITY INPUT TEMPLATE. A COPY OF THE TEMPLATE IS AVAILABLE UPON REQUEST AT 316-268-4090.
- THE CONTRACTOR SHALL PROTECT FROM DAMAGE AND SUPPORT EXISTING UTILITIES THROUGH CONSTRUCTION AS APPROVED BY THE UTILITY OWNER AND THE ENGINEER AT THE CONTRACTORS EXPENSE.

STORM SEWER IMPROVEMENTS to serve Innovation Station Substation 4100 East 17th Street North CITY OF WICHITA, KANSAS

Gary Janzen, P.E. City Engineer
Project Number
0475 PPD (133119)



Stormwater Certification:
Redevelopment

These construction plans were prepared in accordance with the current Stormwater Management Regulations as set forth in the City of Wichita's Stormwater Management Ordinance 16.32 and the policies/guidelines presented in the Wichita/Sedgwick County Stormwater Manual.

Disturbed Area = 0.56 AC
Water Quality Treatment: N/A
Downstream Channel Protection: N/A
Detention: N/A
No BMP was used for this redevelopment.

SHEET INDEX

SI0101	COVER SHEET
SI0102	GENERAL NOTES
SI0103	TEMPORARY EASEMENT PLAN
SI0104	DEMOLITION PLAN
SI0106	SITE & GRADING PLAN
SI0107	EROSION CONTROL PLAN
SI0108	CURB PROFILES
SI0109	SITE DETAILS
SI0110	PRECAST SCREENING WALL DETAILS
SI0111	ORNAMENTAL GATE DETAILS
SI0201	PPD TITLE SHEET
SI0202	STORMWATER PLAN & PROFILE
SI0203	CITY OF WICHITA STANDARD DETAILS (PW-101)
SI0204	CITY OF WICHITA STANDARD DETAILS (SW-105)
SV0101	PRELIMINARY TOPOGRAPHIC-BOUNDARY SURVEY

KEY MAP

SEE SHEET SI0106 FOR SITE PLAN

BENCHMARKS

SEE SHEET SI0101

HORIZONTAL CONTROL

SEE SHEET SI0101

APPROVED AS NOTED
BY WICHITA PUBLIC WORKS ENGINEERING AND STORMWATER DIVISION

Engineering *Rebecca Duff 9/25/17*
Stormwater *Joe Haddad PE 9/25/17*

NOTE TO CONTRACTORS

Inspection and testing for this project is to be provided by a Licensed Consulting Engineering Firm under contract with the Owner/Developer. Said inspection to be in accordance with the City of Wichita standard construction engineering practices and certified by a Licensed Professional Engineer in the state of Kansas. No work shall be performed by the Contractor without such inspection nor shall any work be commenced without written authorization by City Engineering. All Construction and Materials shall comply with the current City of Wichita Specifications and Standards and Special Provisions. (on file and available at Wichita.gov).

An approved copy of these plans signed by City staff are required on-site.

September 2017



8				4				DRAWN BY	RDG - PEC	DATE	09/2017	SCALE:	AS SHOWN		TITLE	INNOVATION STATION SUBSTATION PPD TITLE SHEET	DWG. NO.	SKXXXX_S102		
7				3				DESIGNED BY	CRG - PEC	DATE	09/2017	W.R. NO.	P23659		SHEET NO.	1	OF	4	REV.	0
6				2				APPROVED BY	RAK - PEC	DATE	09/2017									
5				1																
REV.	REVISION DESCRIPTION	DATE	BY/CK	REV.	REVISION DESCRIPTION	DATE	BY/CK													

GROUP:

CAD FILE NO.: SKXXXX_S10201.DWG

GENERAL NOTES

- SEE SHEETS S10203 AND S10204, CITY OF WICHITA STANDARD DETAIL SHEETS FOR TYPE I CURB & GUTTER, STORMWATER STRUCTURE, AND PIPE DETAILS.
- SEE SHEET 7 FOR EROSION CONTROL PLAN. IN ADDITION TO WESTAR STANDARD EROSION CONTROL DETAILS, CONTRACTOR SHALL ADHERE TO CITY OF WICHITA STANDARD EROSION CONTROL DRAWINGS SWS01 THROUGH SWS05. WHERE INSTALLATION METHODS OR SPECIFIED MATERIALS CONFLICT BETWEEN STANDARD DETAILS, THE MOST STRINGENT DETAIL SHALL GOVERN THE INSTALLATION. SELECTION SUBJECT TO APPROVAL OF WESTAR ENERGY.

Wichita-Sedgwick County
Metropolitan Area Building
and Construction Department

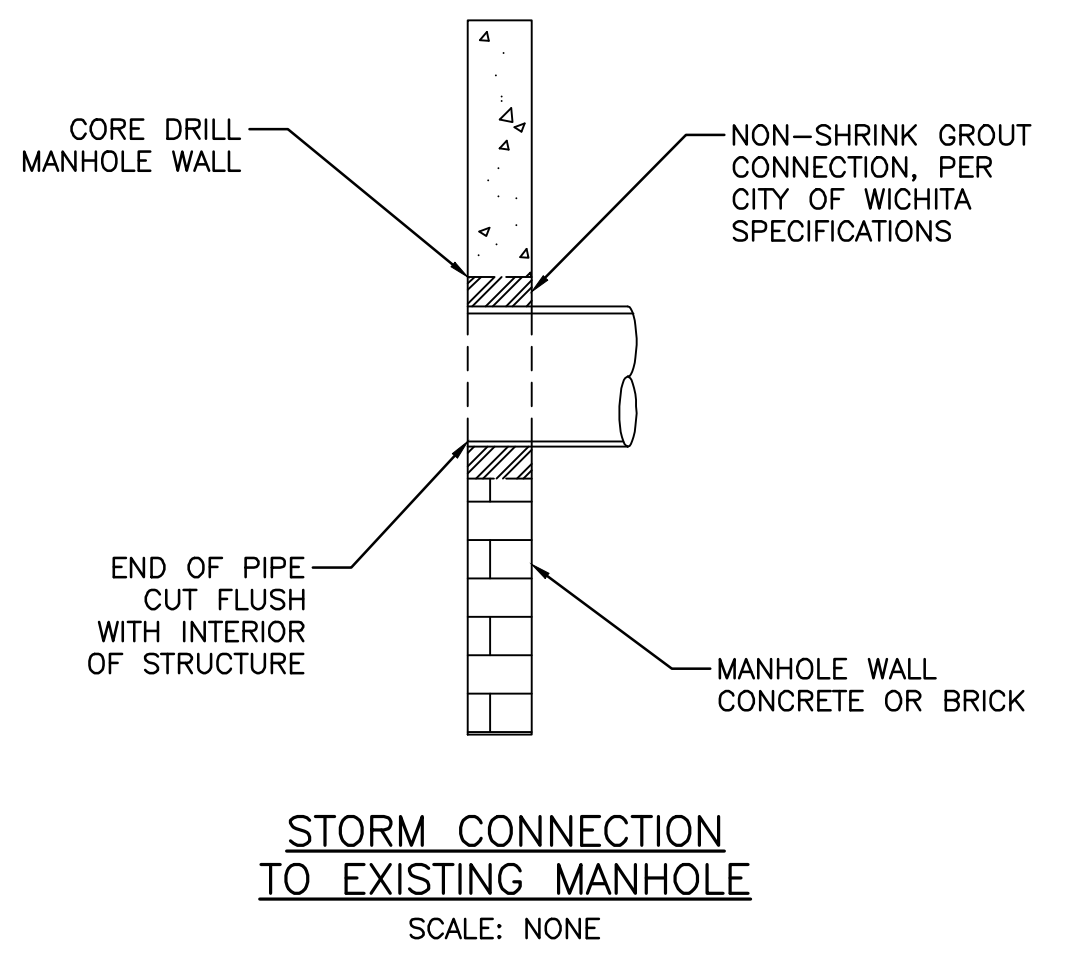
REVIEWED FOR CODE COMPLIANCE

REVISIONS OR COMMENTS MADE ON THESE DRAWINGS ARE THE RESPONSIBILITY OF THE CONTRACTOR. THIS DOCUMENT DOES NOT RELIEVE THE CONTRACTOR FROM COMPLIANCE WITH ALL REQUIREMENTS OF THE CITY OF WICHITA OR THE CITY OF SEDGWICK COUNTY. THE CONTRACTOR IS RESPONSIBLE FOR CONFORMING AND CORRECTING ALL VIOLATIONS OF THE CODE. THIS APPROVAL IS SUBJECT TO PROVISIONS OF SECTION 107.4 OF THE 2012 INTERNATIONAL BUILDING CODE.

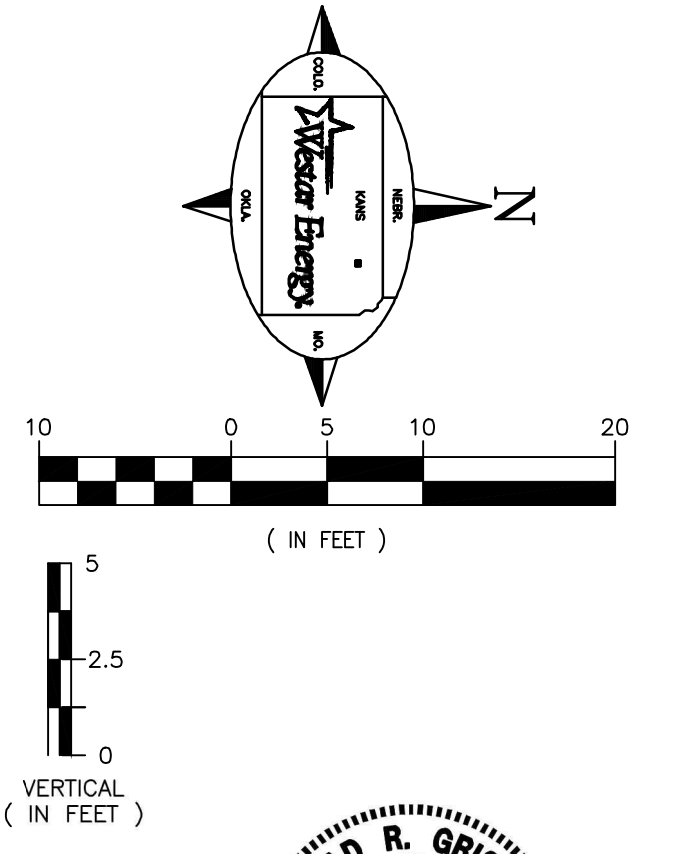
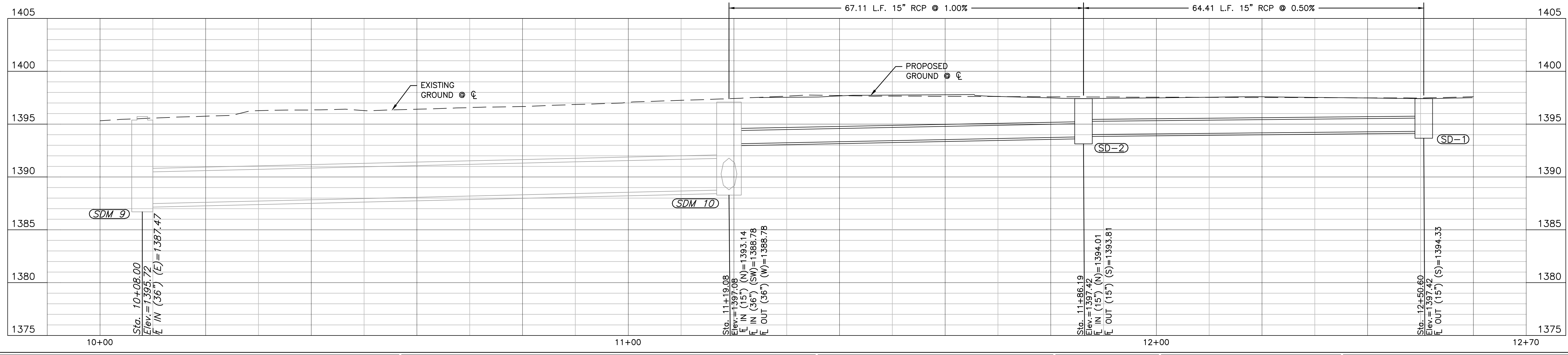
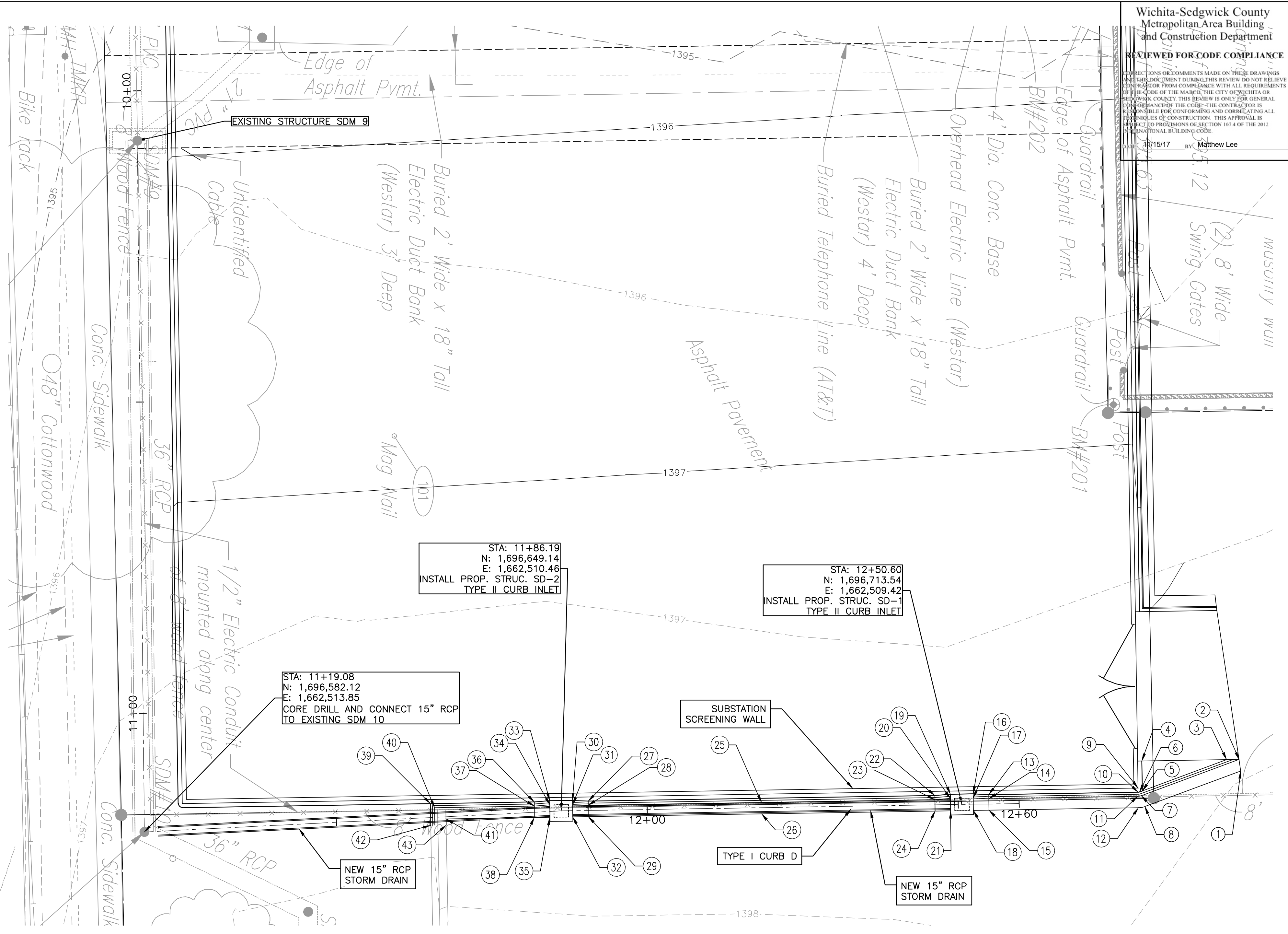
09/15/17 BY: Matthew Lee

POINT #	NORTHING	EASTING	ELEVATION	DESCRIPTION
1	1,696,758.36	1,662,504.05	1397.96	EOC
2	1,696,758.09	1,662,502.20	1397.90	GUTTER
3	1,696,756.08	1,662,502.23	1397.91	BOC
4	1,696,742.46	1,662,502.45	1397.92	TOP AT DRIVE
5	1,696,742.54	1,662,507.25	1397.99	POINT ON BOC
6	1,696,742.09	1,662,507.42	1397.99	BOC PT
7	1,696,742.40	1,662,508.02	1397.72	GUTTER PT
8	1,696,742.96	1,662,509.76	1397.71	EOC PT
9	1,696,741.87	1,662,506.79	1397.99	RP 8"
10	1,696,741.87	1,662,507.46	1397.99	BOC PC
11	1,696,741.79	1,662,508.13	1397.71	GUTTER PC
12	1,696,741.91	1,662,509.96	1397.70	EOC PC
13	1,696,717.86	1,662,507.85	1397.98	BOC PI
14	1,696,717.86	1,662,508.52	1397.45	GUTTER PI
15	1,696,717.88	1,662,510.35	1397.45	EOC PI
16	1,696,715.35	1,662,507.73	1397.97	BOC PI
17	1,696,715.36	1,662,508.40	1397.42	GUTTER PI
18	1,696,715.39	1,662,510.39	1397.42	EOC PI
19	1,696,711.69	1,662,507.78	1397.97	BOC PI
20	1,696,711.70	1,662,508.44	1397.42	GUTTER PI
21	1,696,711.72	1,662,510.45	1397.42	EOC PI
22	1,696,709.19	1,662,507.99	1397.97	BOC PI
23	1,696,709.20	1,662,508.66	1397.43	GUTTER PI
24	1,696,709.22	1,662,510.49	1397.43	LOC PI
25	1,696,681.33	1,662,509.11	1397.60	GUTTER PVI
26	1,696,681.35	1,662,510.94	1397.60	GUTTER PVI
27	1,696,653.45	1,662,508.89	1397.92	BOC PI
28	1,696,653.46	1,662,509.56	1397.43	GUTTER PI
29	1,696,653.48	1,662,511.39	1397.43	EOC PI
30	1,696,650.95	1,662,508.77	1397.92	BOC PI

POINT #	NORTHING	EASTING	ELEVATION	DESCRIPTION
31	1,696,650.96	1,662,509.44	1397.42	GUTTER PI
32	1,696,650.99	1,662,511.43	1397.42	EOC PI
33	1,696,647.29	1,662,508.82	1397.92	BOC PI
34	1,696,647.29	1,662,509.48	1397.42	GUTTER PI
35	1,696,647.32	1,662,511.49	1397.42	EOC PI
36	1,696,644.79	1,662,509.03	1397.92	BOC PI
37	1,696,644.80	1,662,509.70	1397.46	GUTTER PI
38	1,696,644.82	1,662,511.53	1397.46	EOC PI
39	1,696,628.09	1,662,509.30	1397.90	BOC PI
40	1,696,628.78	1,662,509.96	1397.69	GUTTER PI
41	1,696,630.63	1,662,511.76	1397.65	EOC PI
42	1,696,628.15	1,662,512.78	1397.74	BOC PI (MATCH EXISTING)
43	1,696,630.64	1,662,512.74	1397.67	EOC PI (MATCH EXISTING)



STORM CONNECTION TO EXISTING MANHOLE
SCALE: NONE



PEC 1263 SW TOPEKA BLVD.
TOPEKA, KS 66612
785-233-8300
www.pec1.com

REV.	REVISION DESCRIPTION	DATE	BY/CK
8			
7			
6			
5			

DRAWN BY: **RDG - PEC** DATE: **09/2017**

DESIGNED BY: **CRG - PEC** DATE: **09/2017**

APPROVED BY: **RAK - PEC** DATE: **09/2017**

SCALE: **NONE**

W.R. NO.: **P23659**

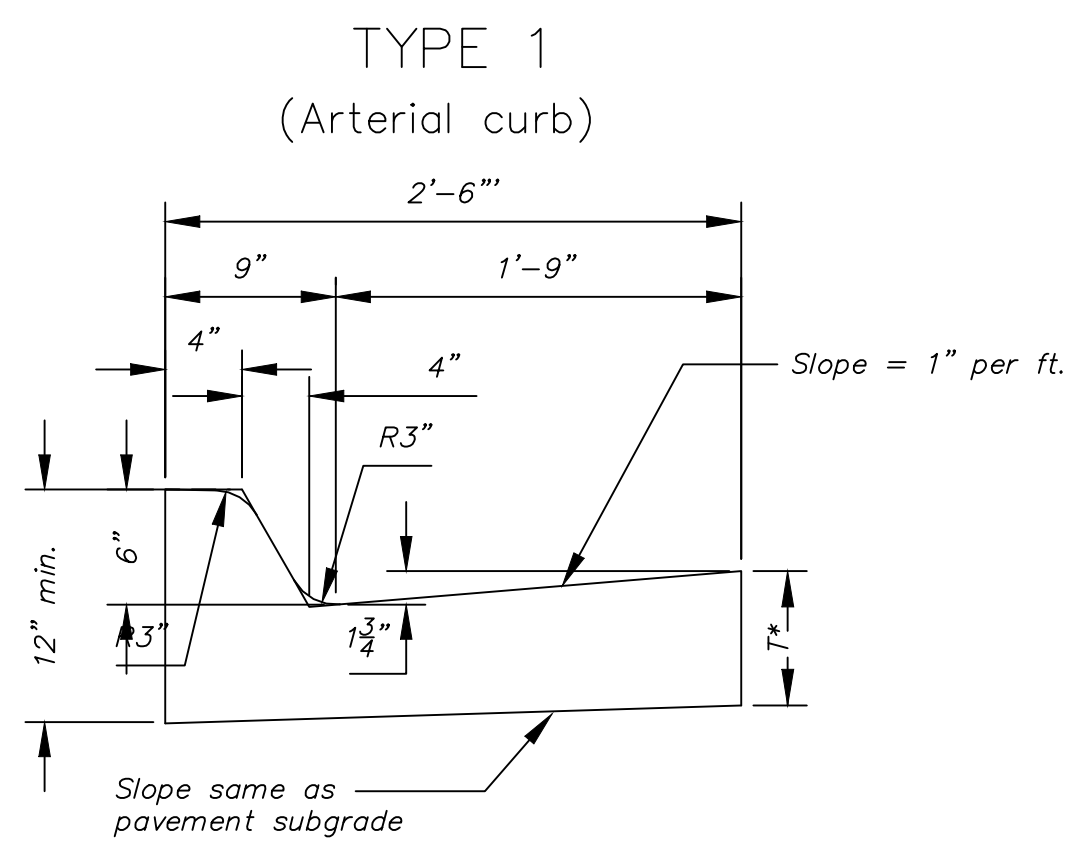


TITLE: **INNOVATION STATION SUBSTATION STORMWATER PLAN & PROFILE**

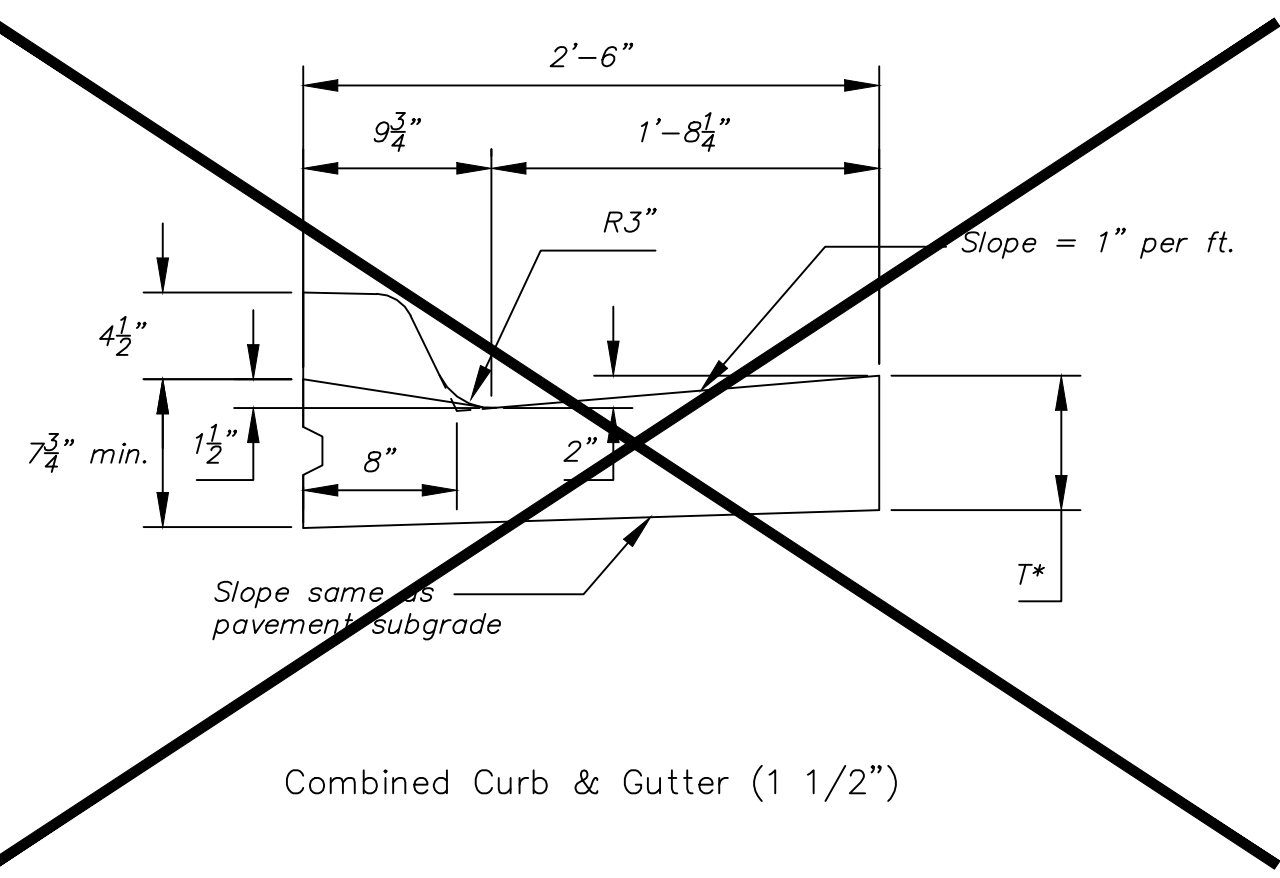
DWG. NO.: **SKXXXX_S102**

SHEET NO.: **2** OF **4**

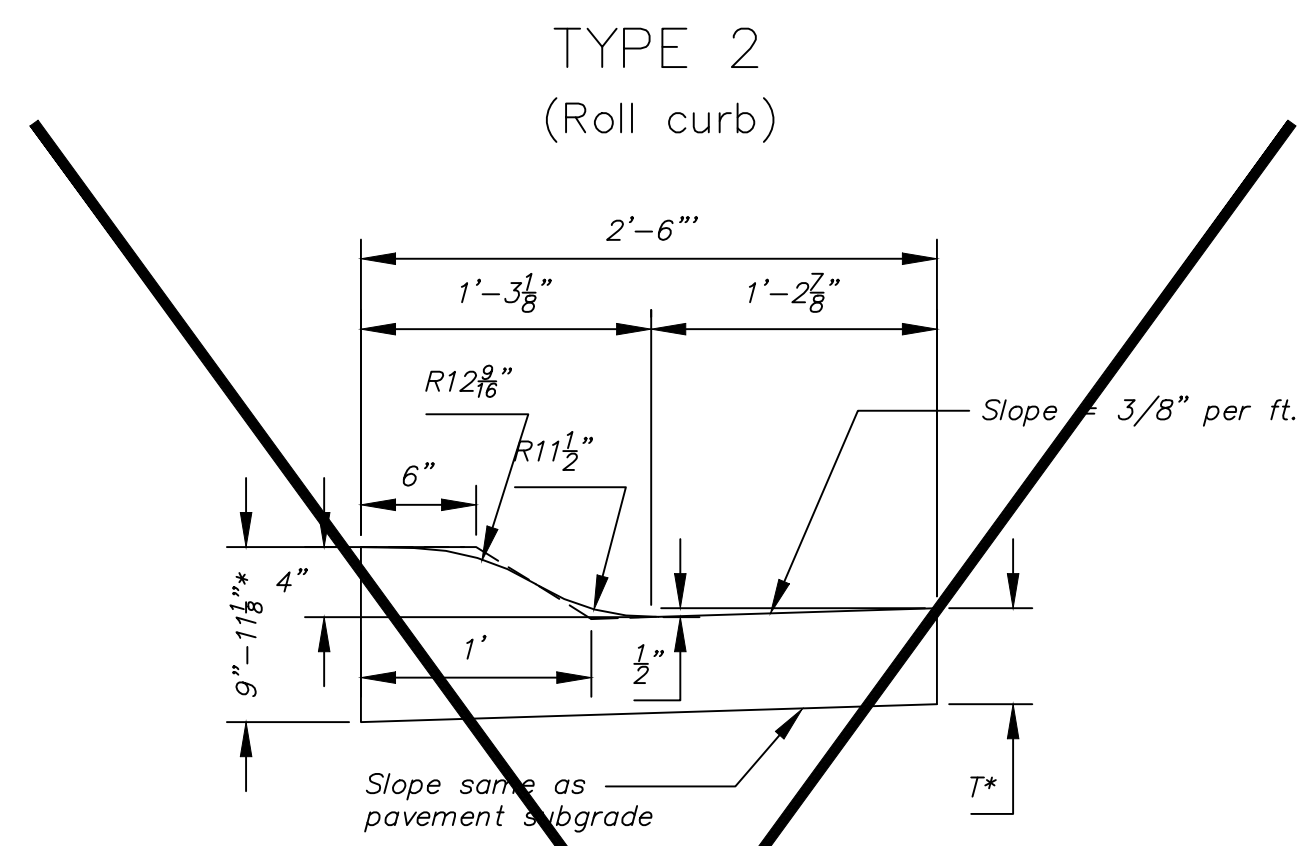
REV.: **0**



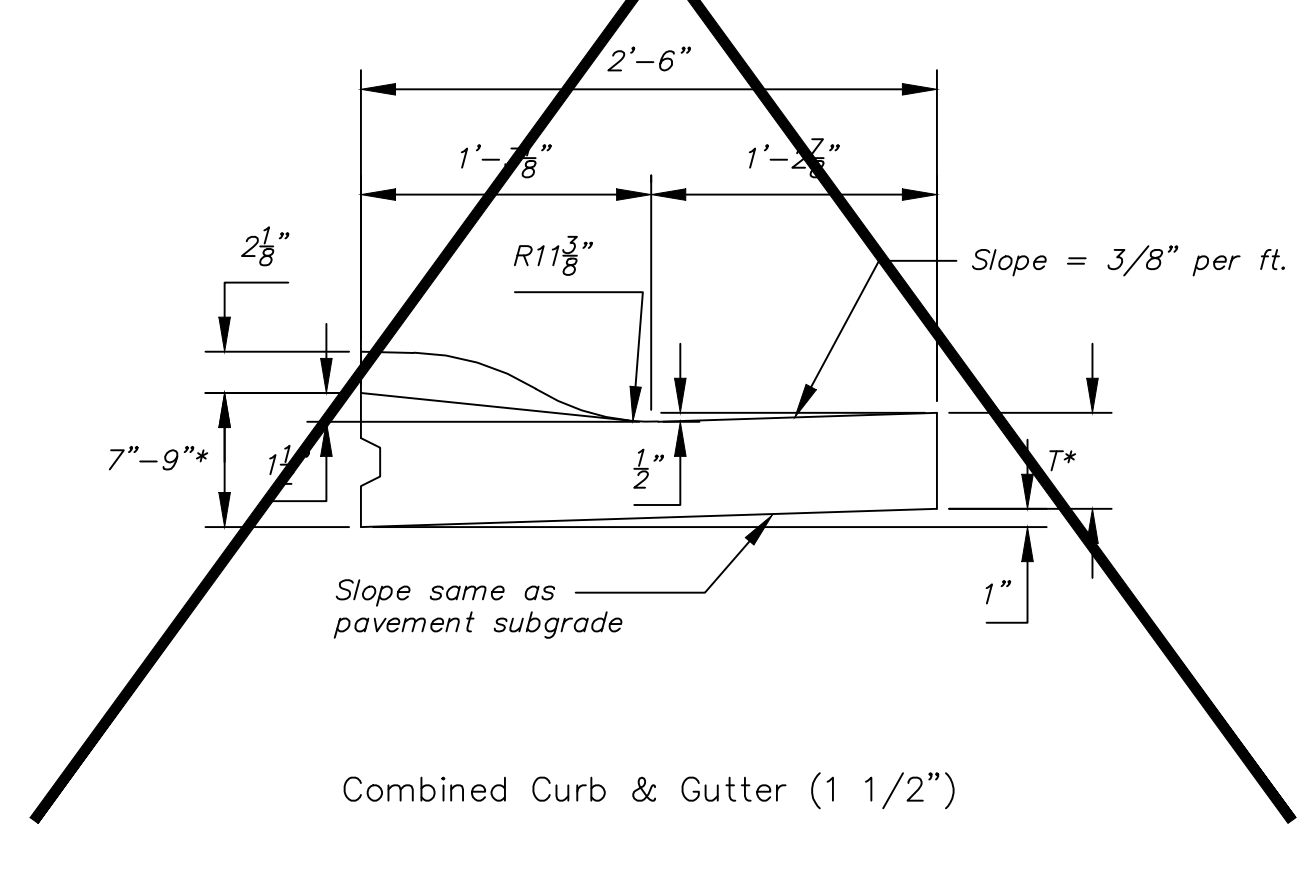
Combined Curb & Gutter (6")



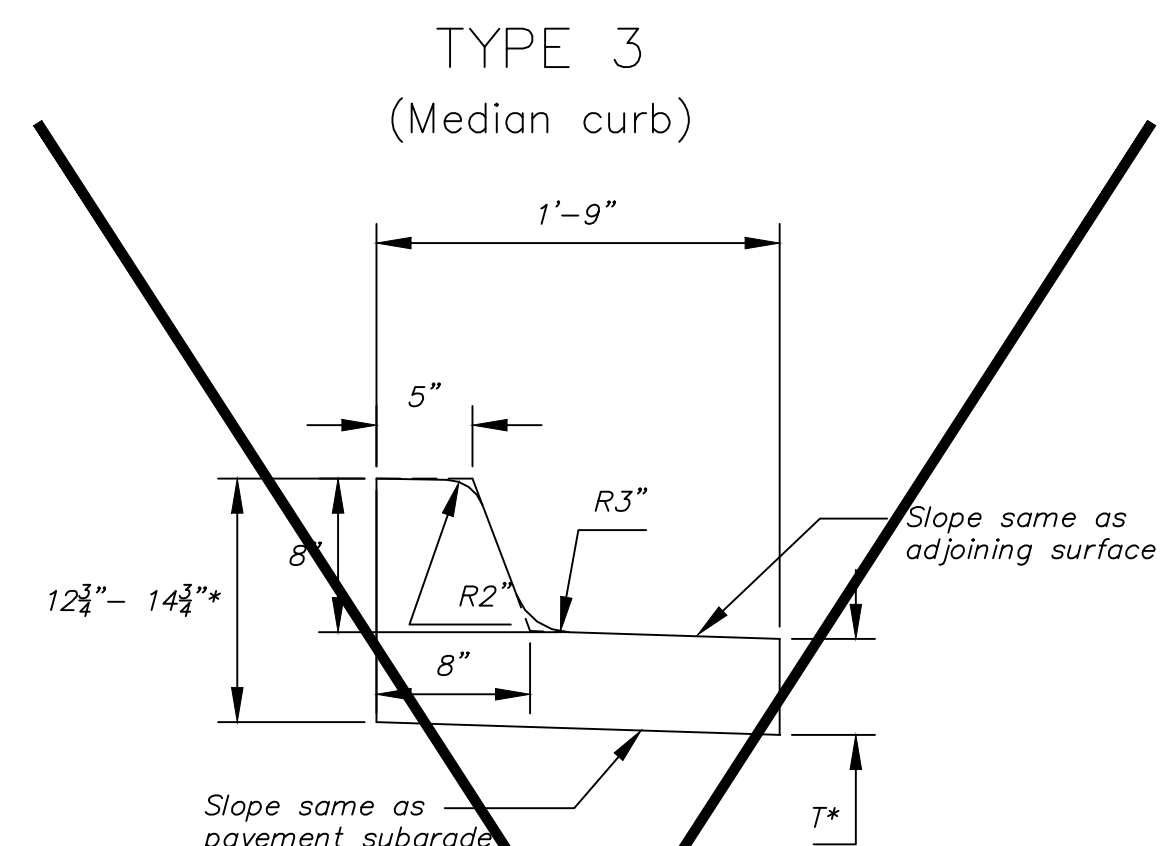
Combined Curb & Gutter (1 1/2")



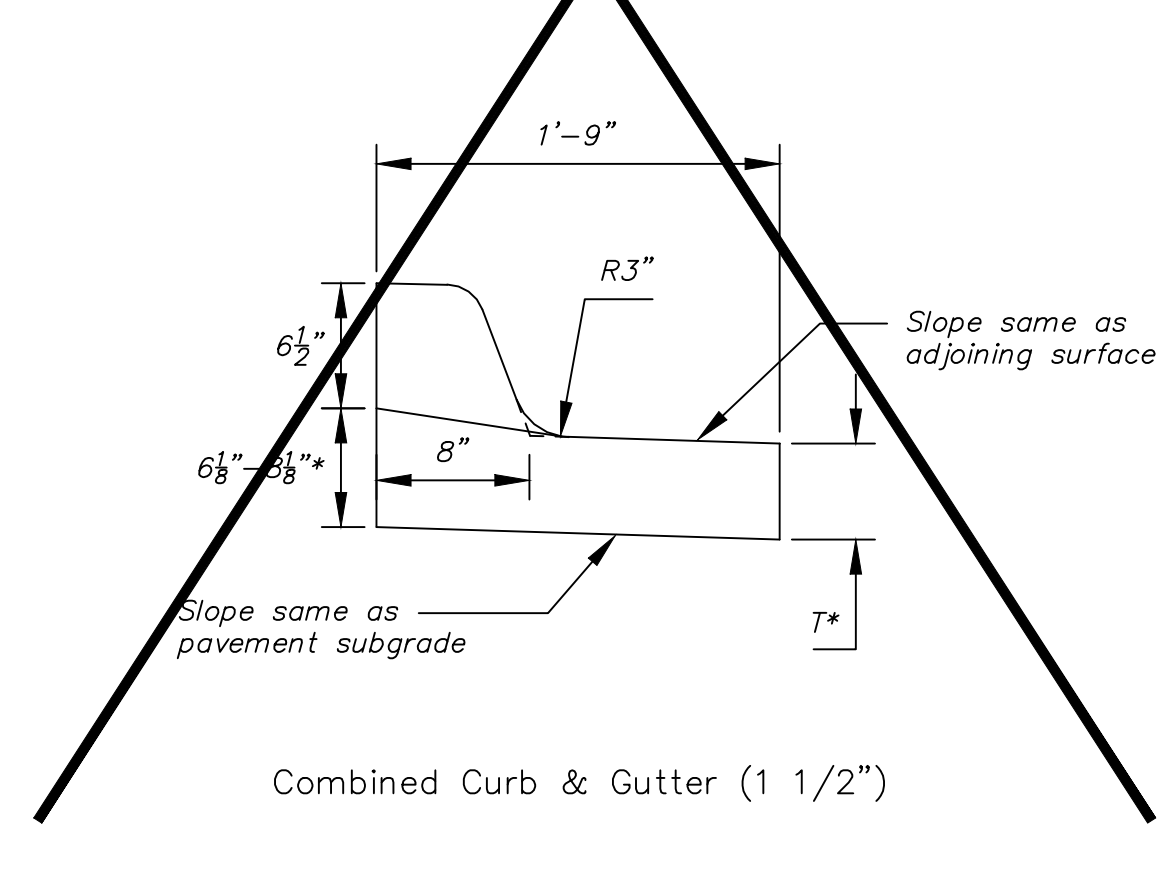
Combined Curb & Gutter (3 5/8")



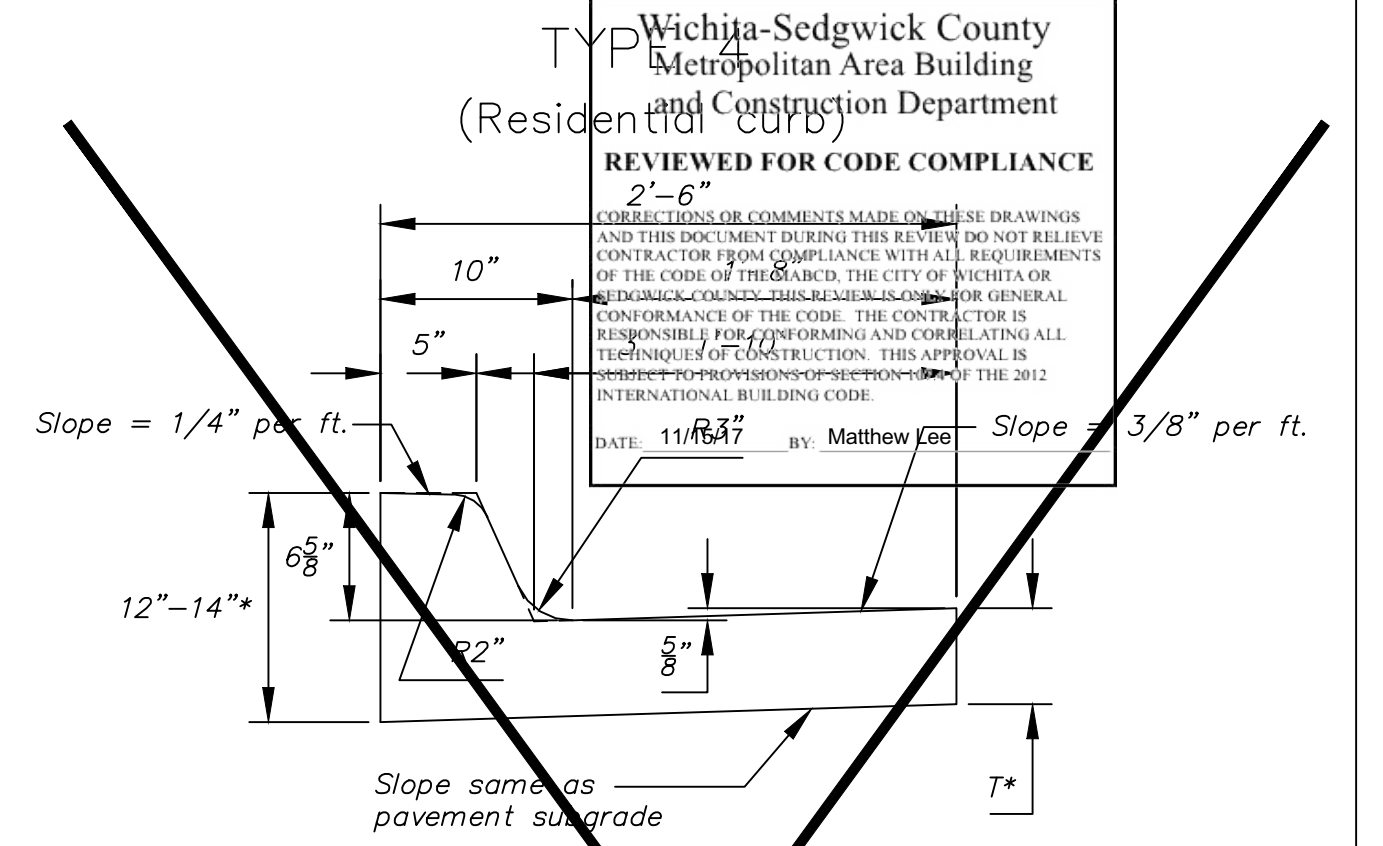
Combined Curb & Gutter (1 1/2")



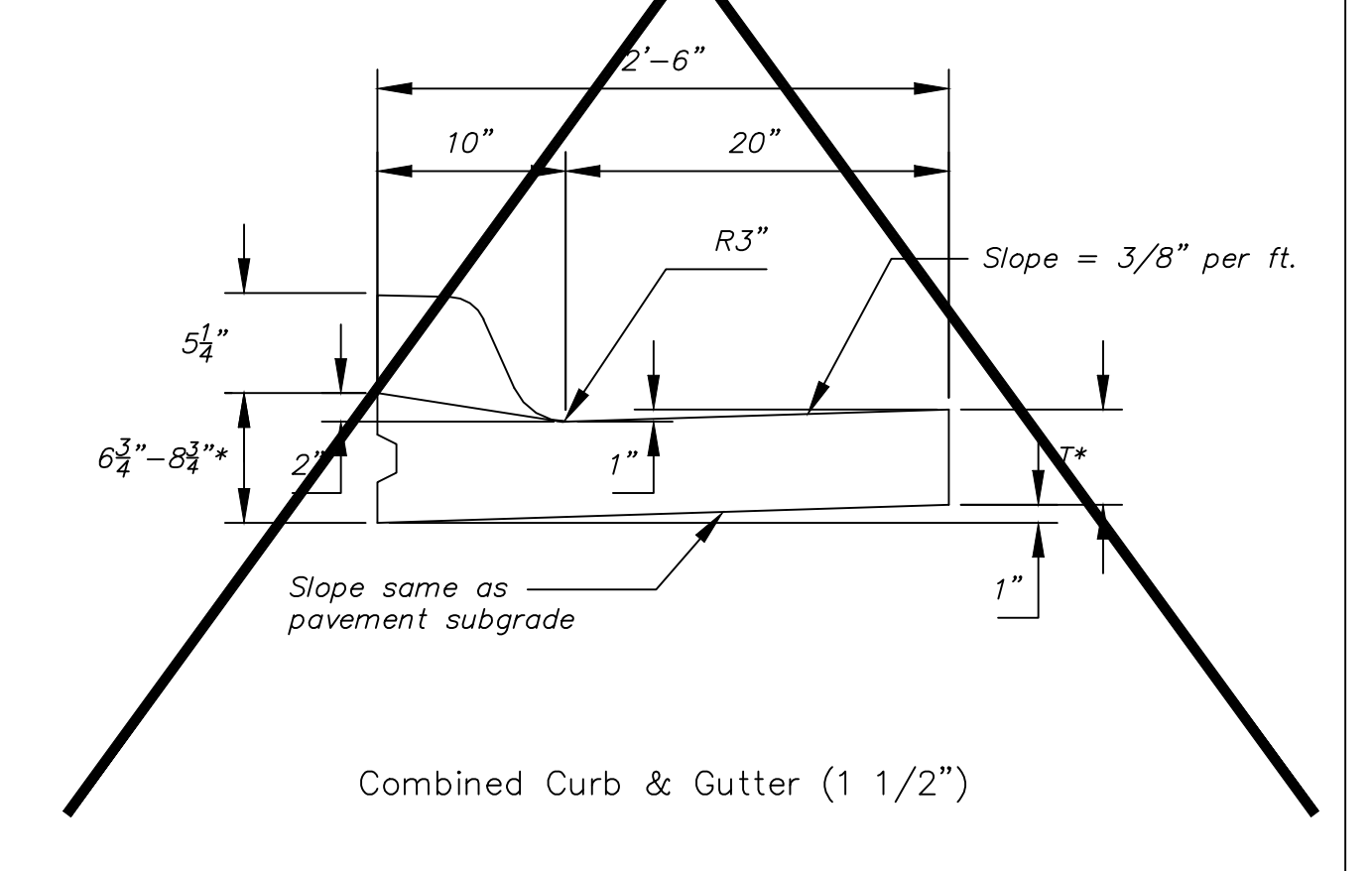
Combined Curb & Gutter (8")



Combined Curb & Gutter (1 1/2")

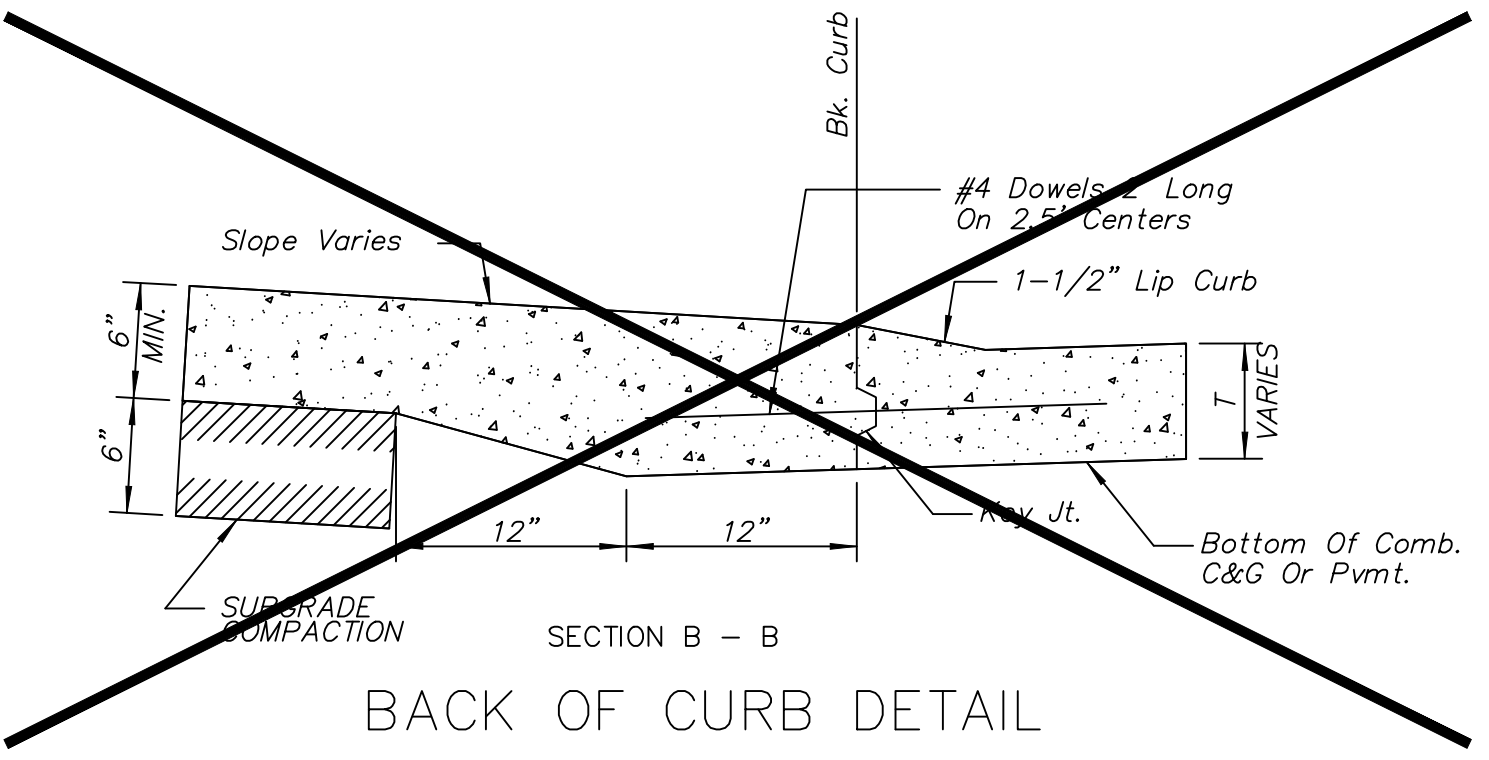


Combined Curb & Gutter (6 5/8")

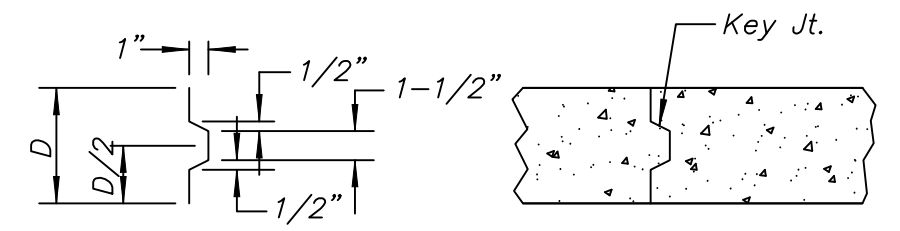


Combined Curb & Gutter (1 1/2")

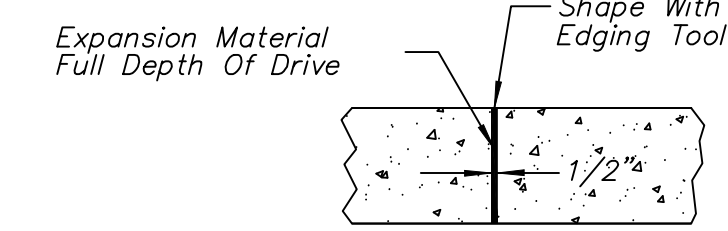
Wichita-Sedgwick County
Metropolitan Area Building
and Construction Department
REVIEWED FOR CODE COMPLIANCE
DATE: 11/16/17 BY: Matthew Lee



BACK OF CURB DETAIL



ALT. LONGITUDINAL CONSTRUCTION JOINT

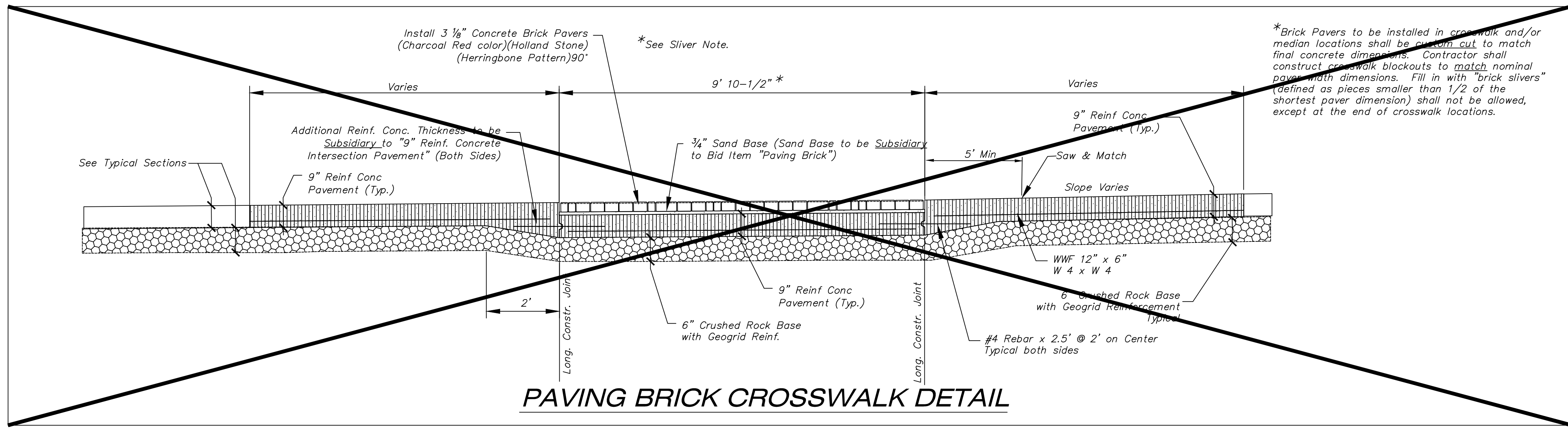


EXPANSION JOINT (E.J.)

T* = Thickness of curb to adjust with pavement thickness

GENERAL NOTES

- Expansion (isolation) joints shall be constructed a maximum of 300' apart and at all Pls, PCs, cul-de-sac quadrants, and ends of returns.
- Contraction joints shall be constructed a minimum of 12' apart.
- Joint sealer shall be required at all joints on arterial and industrial streets and at intersections on residential streets.



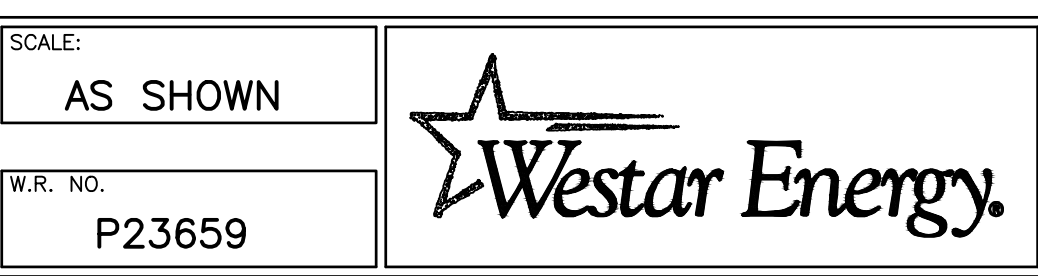
PAVING BRICK CROSSWALK DETAIL



REVISED: OCTOBER 2015		
CURB & GUTTER & PAVING BRICK CROSSWALK DETAILS		
CITY ENGINEER GARY JANZEN, P.E.		
PROJECT NUMBER	OCA NUMBER	DATE
CITY ENGINEER'S OFFICE CITY HALL - SEVENTH FLOOR 455 NORTH MAIN STREET WICHITA, KANSAS 67202-1620 (316) 268-4501		SHEET _ of _

8							
7							
6							
5							
REV.	REVISION DESCRIPTION	DATE	BY/CK	REV.	REVISION DESCRIPTION	DATE	BY/CK

DRAWN BY	DATE	SCALE:
DESIGNED BY	DATE	AS SHOWN
APPROVED BY	DATE	W.R. NO.
		P23659



TITLE	DWG. NO.
INNOVATION STATION SUBSTATION CITY OF WICHITA STANDARD DETAILS (PV-101)	SKXXXX_S102
	SHEET NO. REV.
	3 OF 4 0



1263 SW TOPEKA BLVD.
TOPEKA, KS 66612
785-233-8300
www.pec1.com

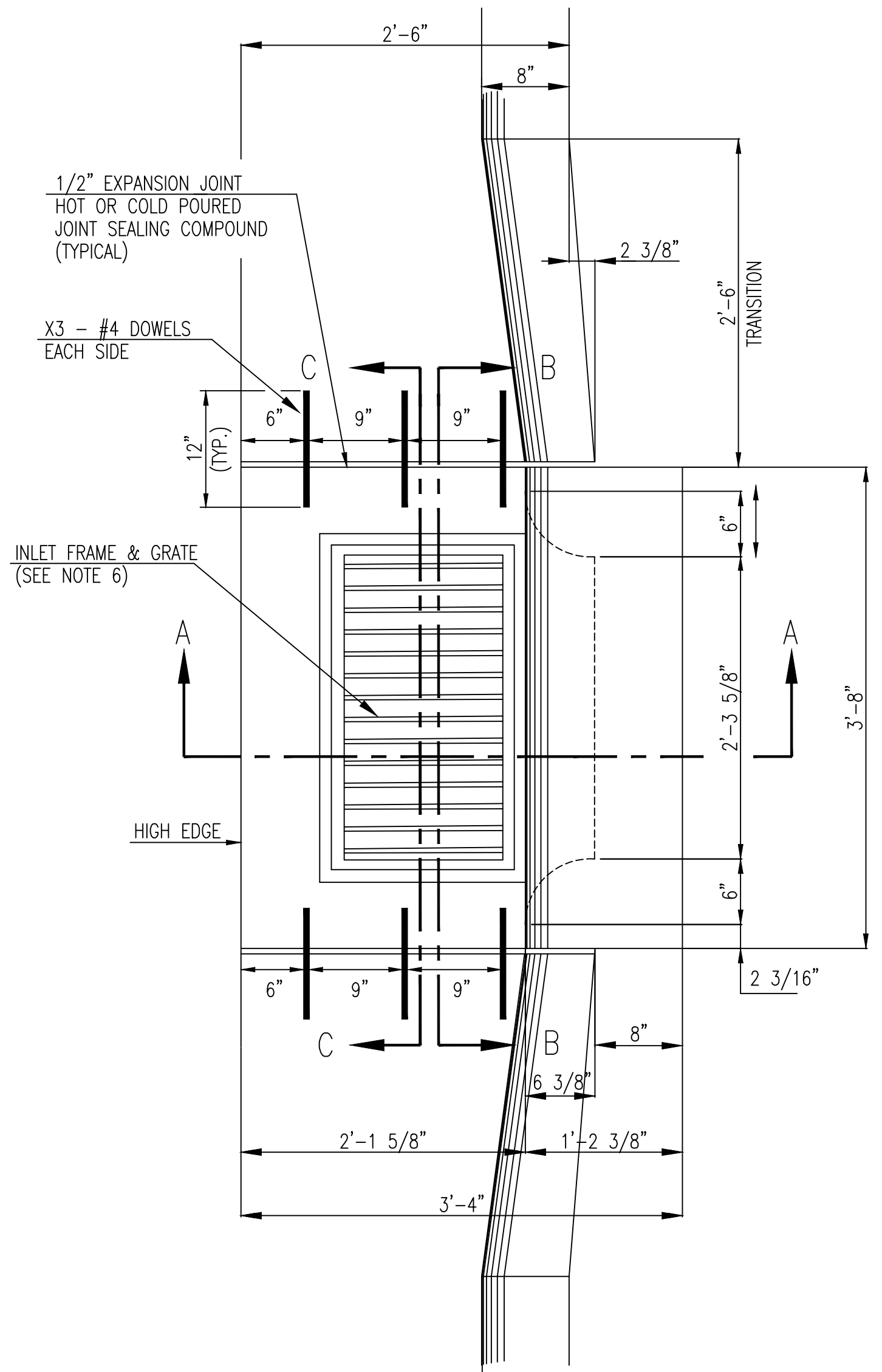
GROUP:

CAD FILE NO.: SKXXXX_S10203.DWG

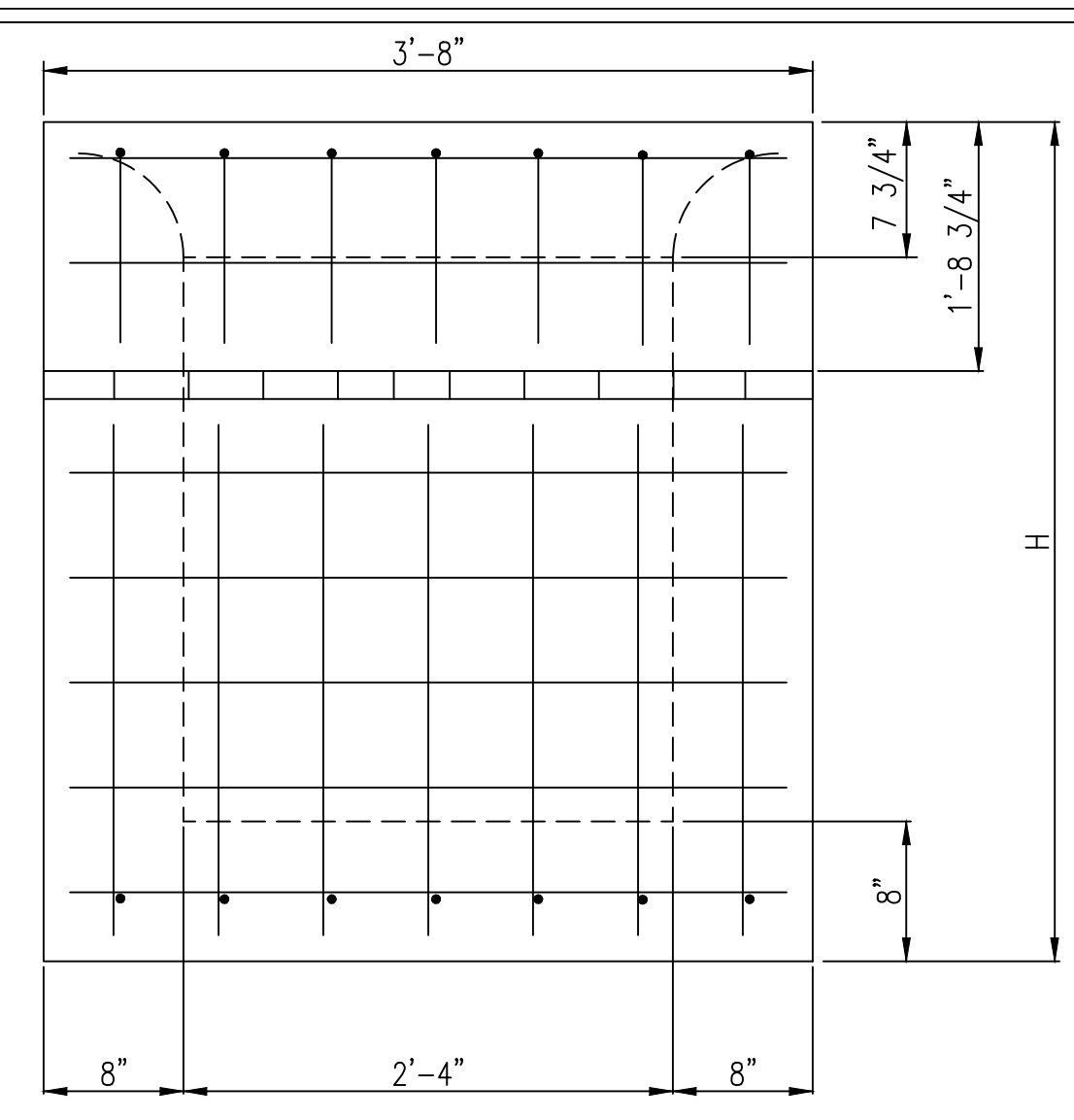
GENERAL NOTES

- USE THE CONCRETE MIX SPECIFIED FOR THE CITY OF WICHITA THROUGHOUT. ALL EXPOSED SURFACES SHALL BE FINISHED WITH AN EDGING TO THE REINFORCING BARS SHALL BE BENT AROUND PIPE.
- INLET INVERT SHALL BE SHAPED WITH A SACK MIX CONCRETE TO CREATE FLOW CHANNELS AND TO INCREASE HYDRAULIC EFFICIENCY SUCH THAT THE INLET WILL BE SELF-CLEANING BETWEEN ALL INLET AND/OR OUTLET PIPES.
- ALL BARS ARE #4 WITH 6" SPACING AND SHALL HAVE A MINIMUM CLEARANCE OF 1 1/2 INCHES UNLESS OTHERWISE NOTED ON THE PLANS.
- NO DEDUCTIONS WILL BE MADE IN PAY LENGTH OF CURB, GUTTER, OR CURB AND GUTTER THROUGH THE INLET AREA.
- USE DEETER FOUNDRY, INC. CASTING NO. 2442/43 OR EJIW 7600Z LEFT SIDE, 7600 RIGHT SIDE IN INLET FRAME AND GRATE WITH STYLE H GRATE. INLET FRAME TO BE PROOF LOAD TESTED TO 40,000 LBS. ON UNSUPPORTED SIDE.
- REINFORCING BARS SHALL BE CUT OR BENT AROUND PIPES. NO DEDUCTION IN CONCRETE QUANTITIES SHALL BE MADE FOR PIPE OPENINGS.
- THE VANES OF THE GRATE SHALL BE ORIENTED WITH RESPECT TO THE FLOW ARROWS SHOWN ON THE PLANS.
- CONTRACTOR SHALL REMOVE LIFTING HOOKS AFTER INSTALLATION. RECESSES IN INLET WALL SHALL BE GROUTED FLUSH TO THE INLET WALL WITH HYDRAULIC CEMENT AFTER THE INLET IS IN PLACE. LIFTING HOLES THRU THE INLET WALL WILL NOT BE ACCEPTED.

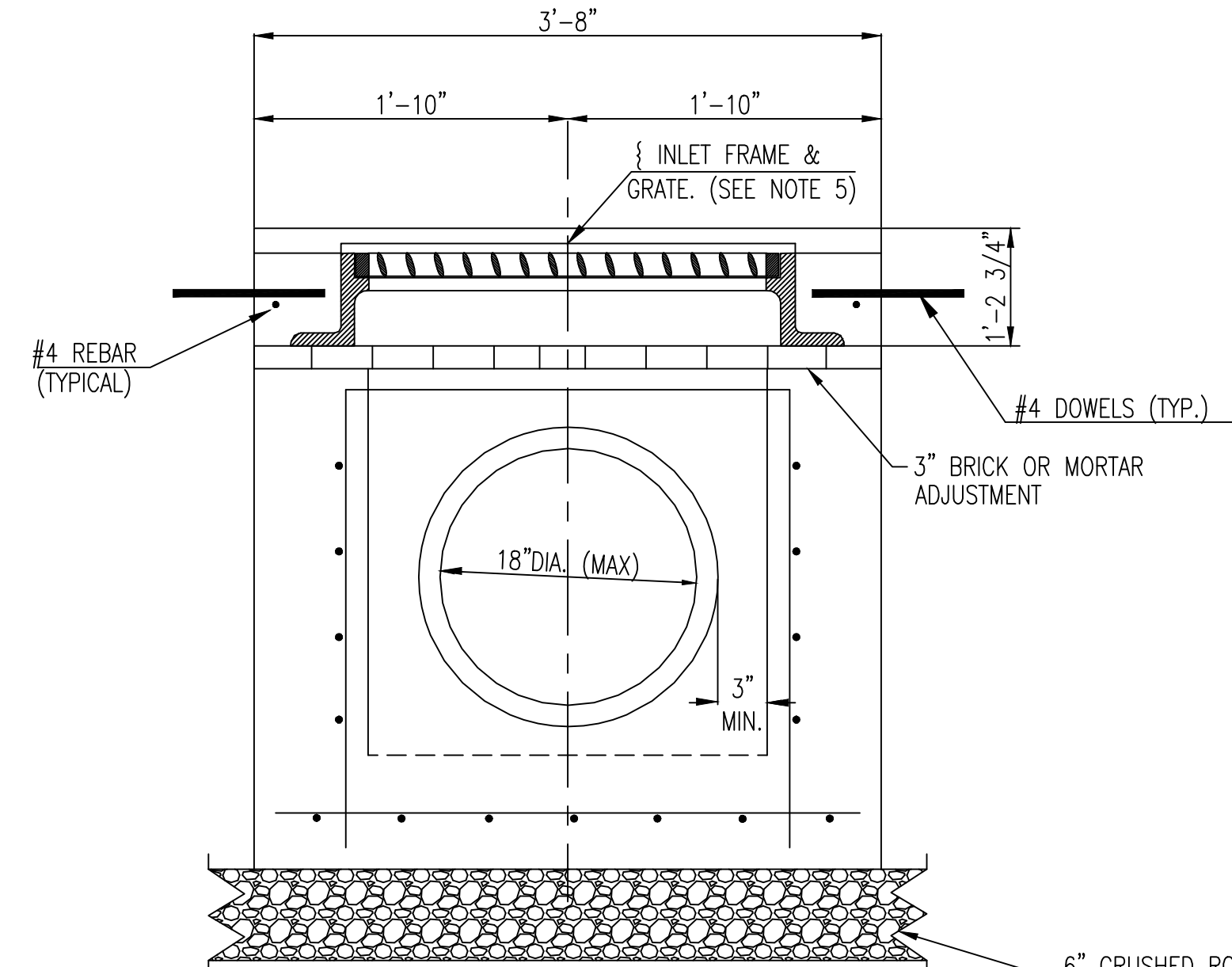
REVIEWED FOR CODE COMPLIANCE
THIS DOCUMENT IS THE PROPERTY OF THE CITY OF WICHITA. IT IS TO BE USED ONLY FOR THE PROJECT AND LOCATION SPECIFICALLY IDENTIFIED HEREON. IT IS NOT TO BE REPRODUCED OR TRANSMITTED IN ANY FORM OR BY ANY MEANS, ELECTRONIC OR MECHANICAL, INCLUDING PHOTOCOPYING, RECORDING, OR BY ANY INFORMATION STORAGE AND RETRIEVAL SYSTEM, WITHOUT THE WRITTEN PERMISSION OF THE CITY OF WICHITA. THE CONTRACTOR IS RESPONSIBLE FOR CONFORMING AND CORRELATING ALL TECHNICAL SPECIFICATIONS TO THE CITY OF WICHITA SPECIFICATIONS AND THE CITY OF WICHITA SPECIFICATIONS TO THE CITY OF WICHITA SPECIFICATIONS. THIS APPROVAL IS NOT A GUARANTEE OF THE ACCURACY OF THE INFORMATION OR THE RESULTS OF THE CONSTRUCTION. THE CONTRACTOR SHALL BE RESPONSIBLE FOR OBTAINING ALL NECESSARY PERMITS AND APPROVALS FROM THE CITY OF WICHITA AND THE STATE OF KANSAS.



PLAN

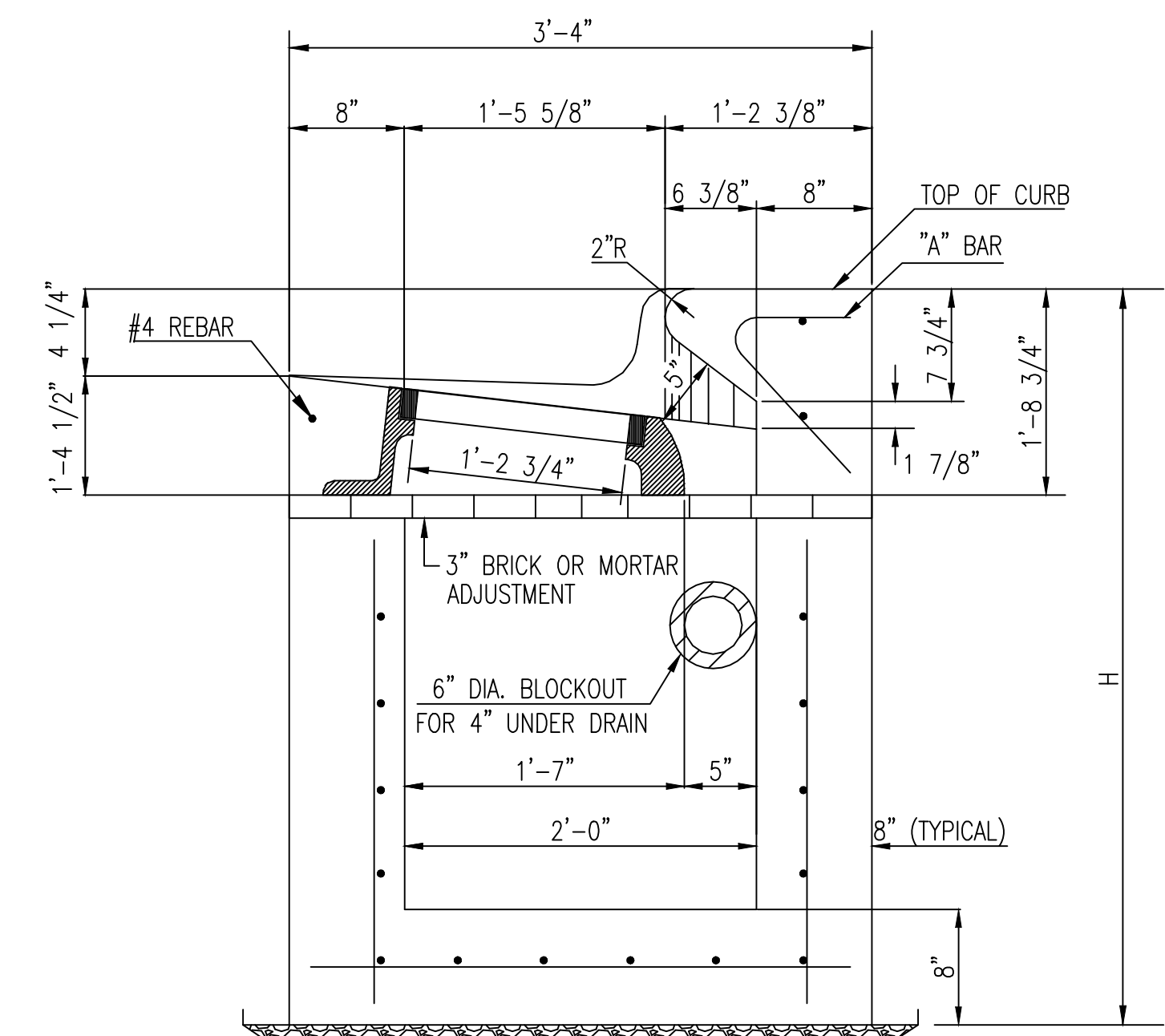


REAR WALL



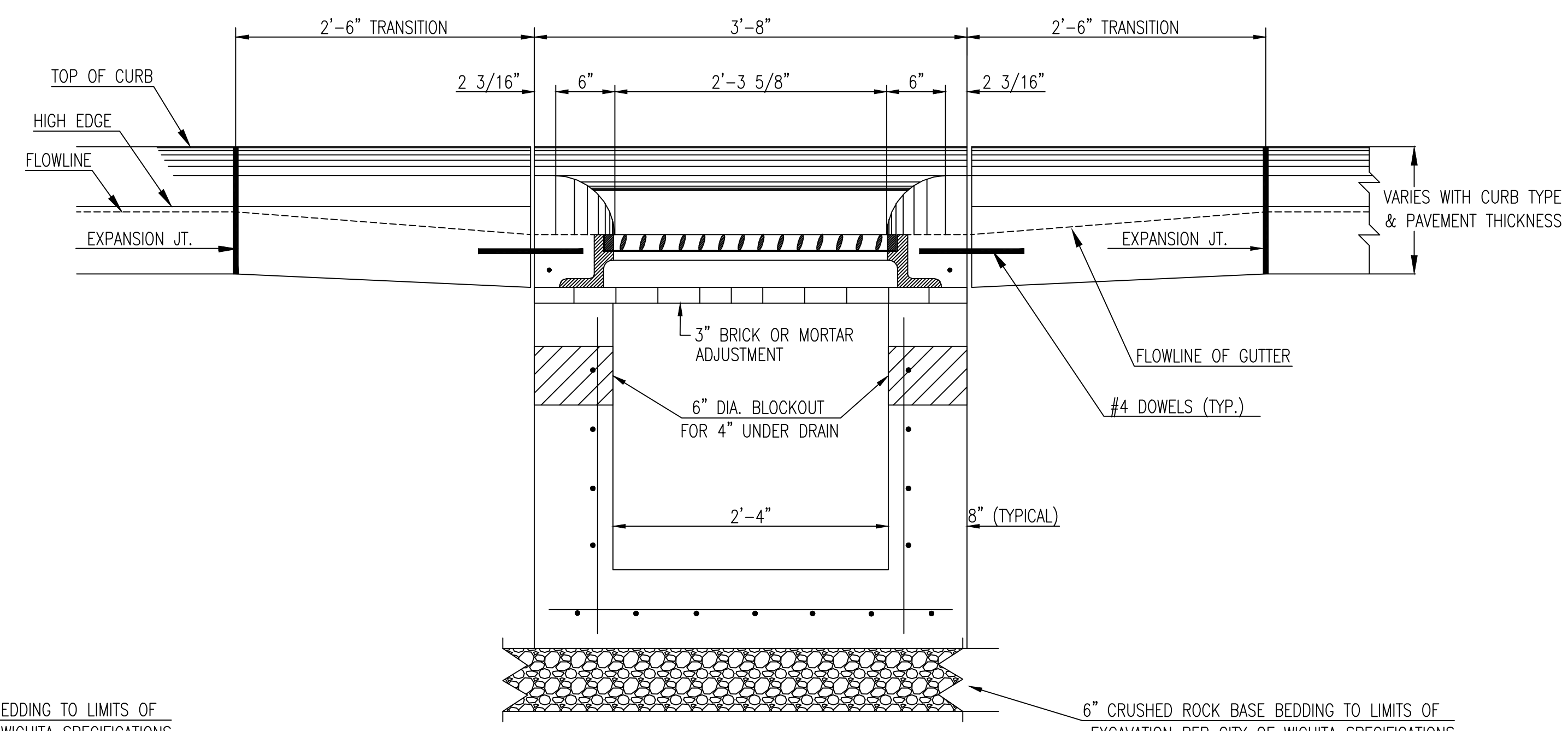
SECTION C-C

6" CRUSHED ROCK BASE BEDDING TO LIMITS OF EXCAVATION PER CITY OF WICHITA SPECIFICATIONS



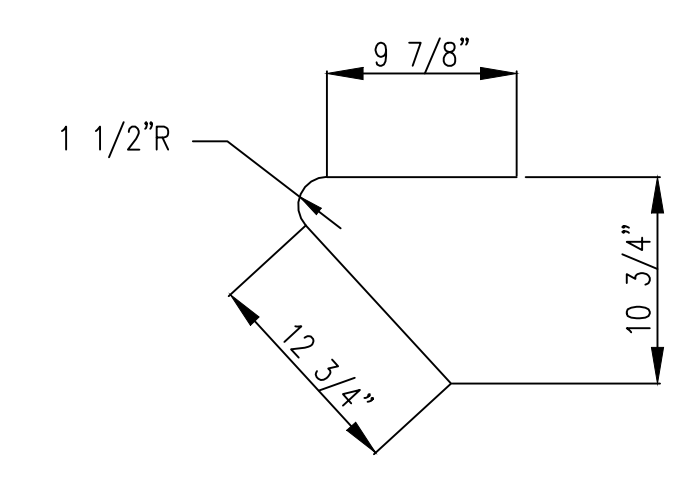
SECTION A-A

6" CRUSHED ROCK BASE BEDDING TO LIMITS OF EXCAVATION PER CITY OF WICHITA SPECIFICATIONS



SECTION B-B

6" CRUSHED ROCK BASE BEDDING TO LIMITS OF EXCAVATION PER CITY OF WICHITA SPECIFICATIONS



"A" BAR
BENDING DIAGRAM

REVISED: MARCH 2015



STANDARD SINGLE
TYPE II CURB INLET

CITY ENGINEER
GARY JANZEN, P.E.

PROJECT NUMBER _____ OCA NUMBER _____ DATE _____

CITY ENGINEER'S OFFICE
CITY HALL - SEVENTH FLOOR
455 NORTH MAIN STREET
WICHITA, KANSAS 67202-1620
(316) 268-4501

SHEET
_ of _

REV.	REVISION DESCRIPTION	DATE	BY/CK	REV.	REVISION DESCRIPTION	DATE	BY/CK
8				4			
7				3			
6				2			
5				1			

DRAWN BY _____ DATE _____
 DESIGNED BY _____ DATE _____
 APPROVED BY _____ DATE _____

SCALE:
AS SHOWN
 W.R. NO.
P23659



TITLE
INNOVATION STATION SUBSTATION
CITY OF WICHITA STANDARD DETAILS (SW-105)

DWG. NO.
SKXXXX_S102
 SHEET NO.
4 OF **4** REV. **0**

