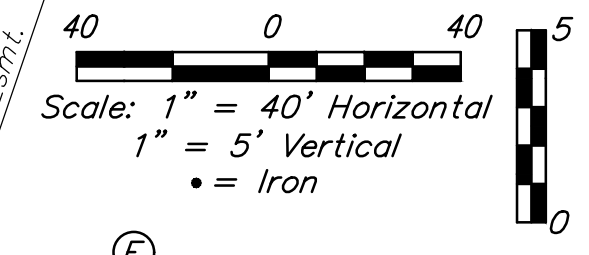
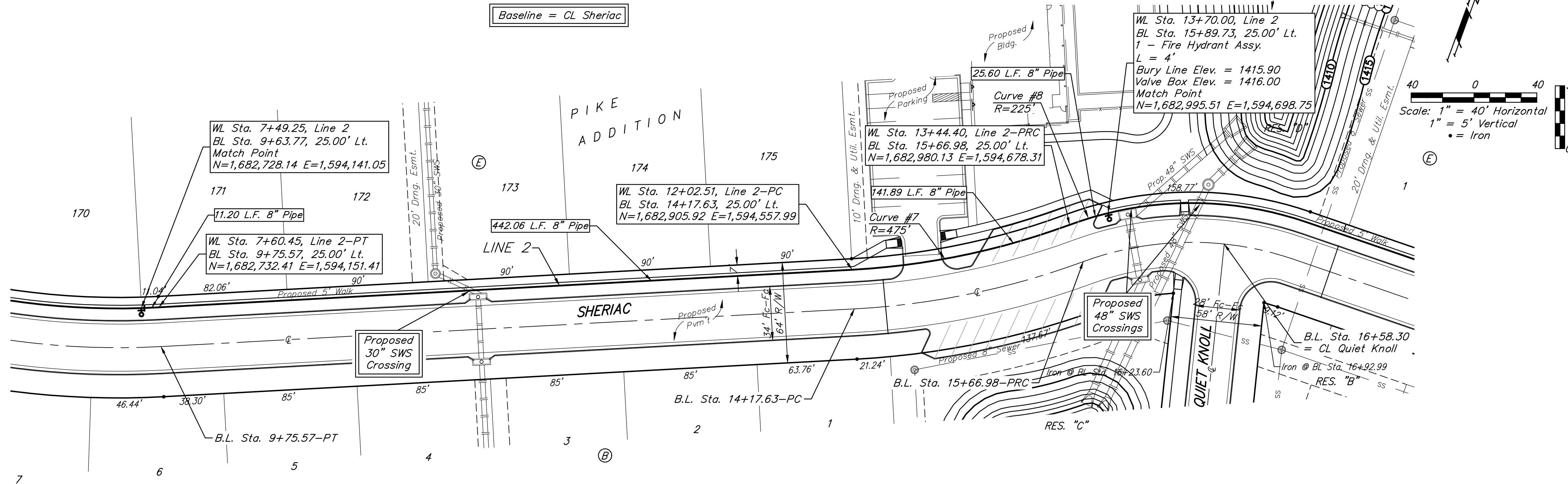


BENCHMARK:
 BM #1: City of Wichita disc top of headwall of RCBC 660'± east of the SE Cor. of the SE1/4, SEC. 22, TWP. 27-S, R-2-W. Elev. = 1410.27 NAVD88

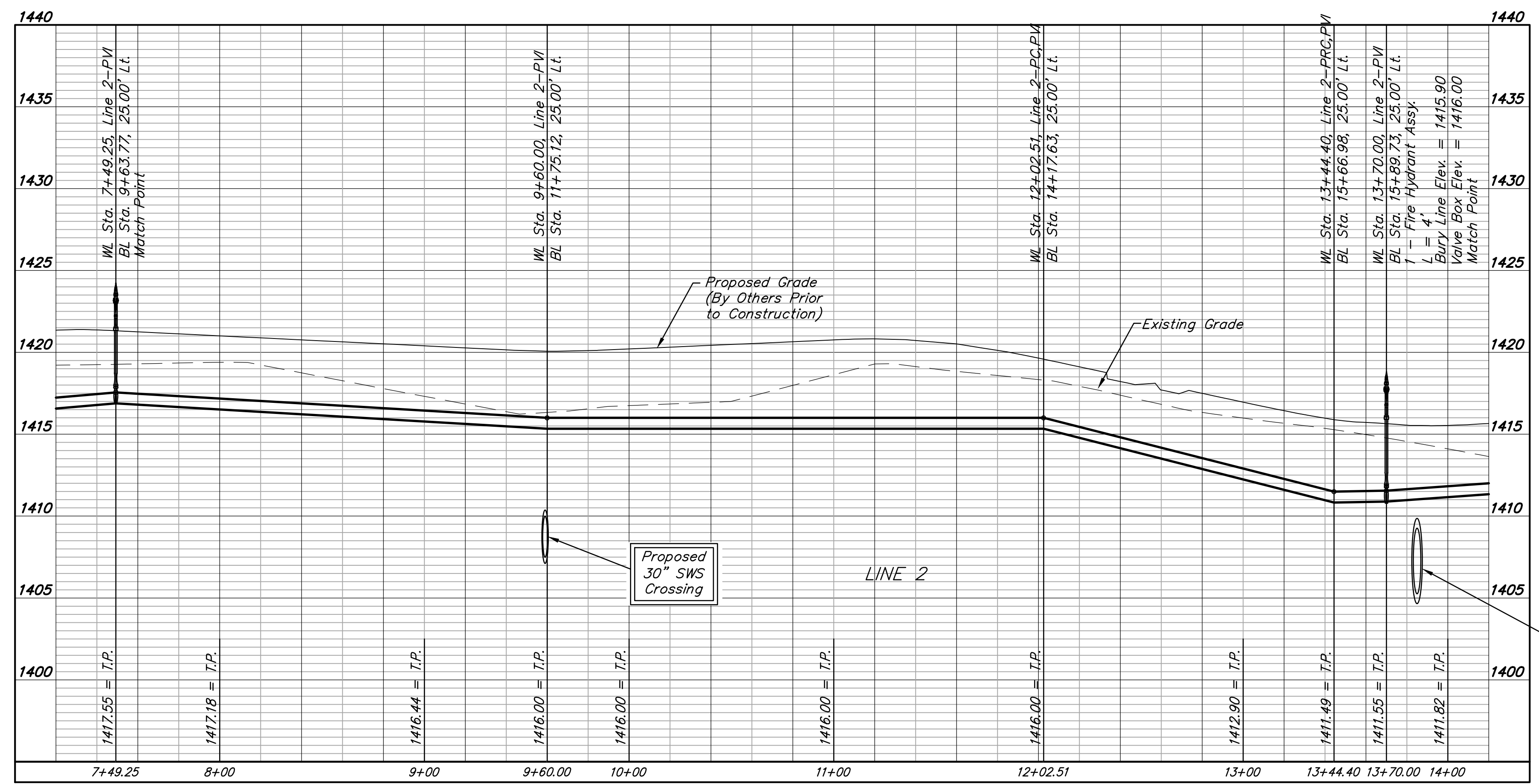
BM #2: 60d step nail in utility pole 28' east of CL 162nd St. W. and 26' north of CL of Maple. Elev. = 1417.99 NAVD88



For radii under 300', contractor shall use short pipe lengths.

Curve #7				
Curve Data Based on Waterline				
Rad. = 475' Delta = 17°06'54" Tangent = 71.48'				
Arc = 141.89' L.C. = 141.36' Def./Ft. = 3.61865 Min.				
Station	Arc	Chord Lengths	Defl.	Total Defl.
12+02.51	-	-	0°00'00"	0°00'00"
12+25.00	22.49'	22.11'	1°21'23"	1°21'23"
12+50.00	25.00'	24.58'	1°30'28"	2°51'51"
12+75.00	25.00'	24.58'	1°30'28"	4°22'19"
13+00.00	25.00'	24.58'	1°30'28"	5°52'47"
13+25.00	25.00'	24.58'	1°30'28"	7°23'15"
13+44.40	19.40'	19.07'	1°10'12"	8°33'27"

Curve #8				
Curve Data Based on Waterline				
Rad. = 225' Delta = 39°12'38" Tangent = 80.14'				
Arc = 153.98' L.C. = 150.99' Def./Ft. = 7.63941 Min.				
Station	Arc	Chord Lengths	Defl.	Total Defl.
13+44.40	-	-	0°00'00"	0°00'00"
13+50.00	5.60'	5.80'	0°42'47"	0°42'47"
13+75.00	25.00'	25.88'	3°10'59"	3°53'46"
14+00.00	25.00'	25.88'	3°10'59"	7°04'45"
14+25.00	25.00'	25.88'	3°10'59"	10°15'44"
14+50.00	25.00'	25.88'	3°10'59"	13°26'43"
14+75.00	25.00'	25.88'	3°10'59"	16°37'42"
14+78.31	3.31'	3.43'	0°25'18"	17°03'00"
14+98.38	20.07'	20.78'	2°33'19"	19°36'19"



Proposed 48" SWS Crossings

