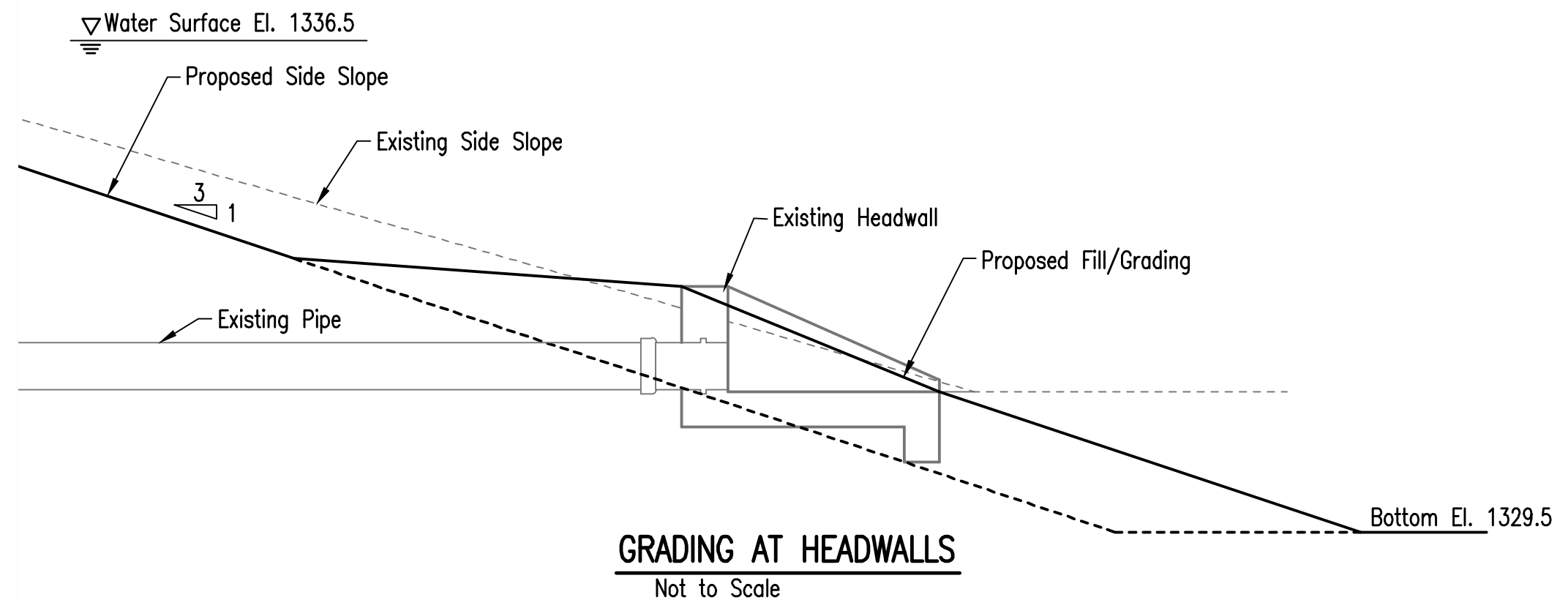
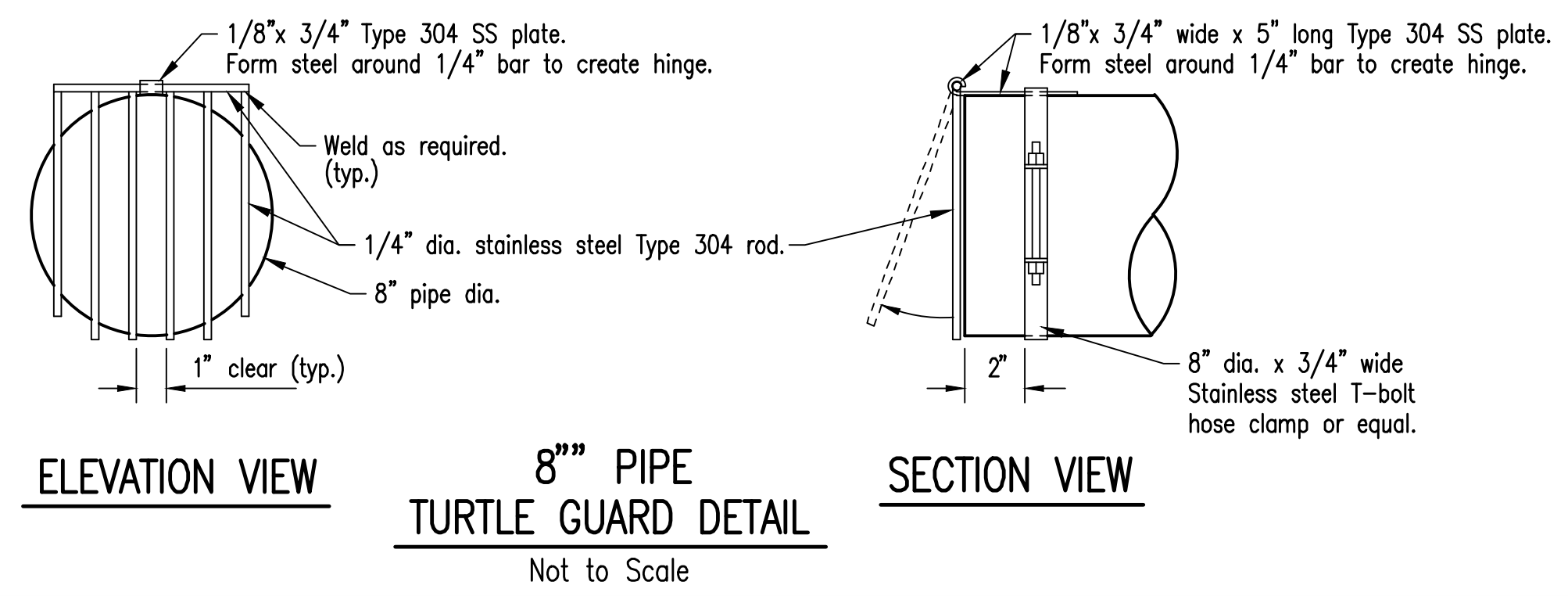
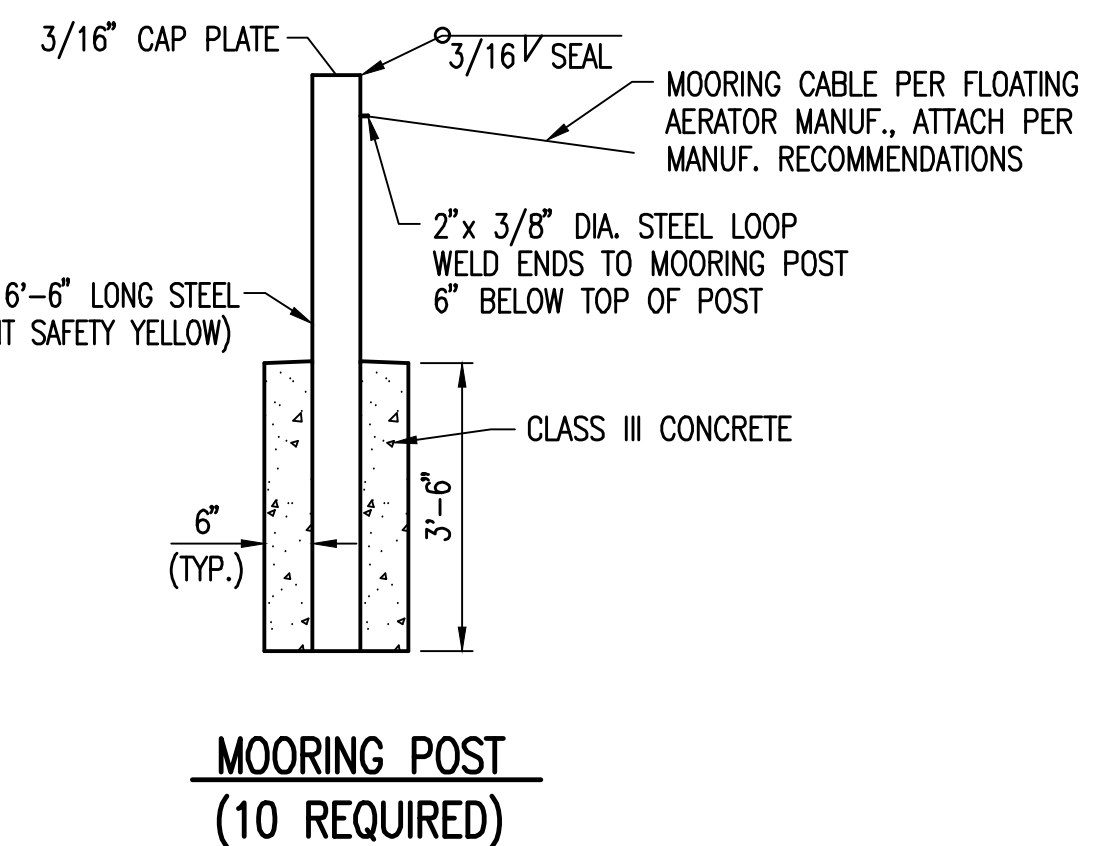
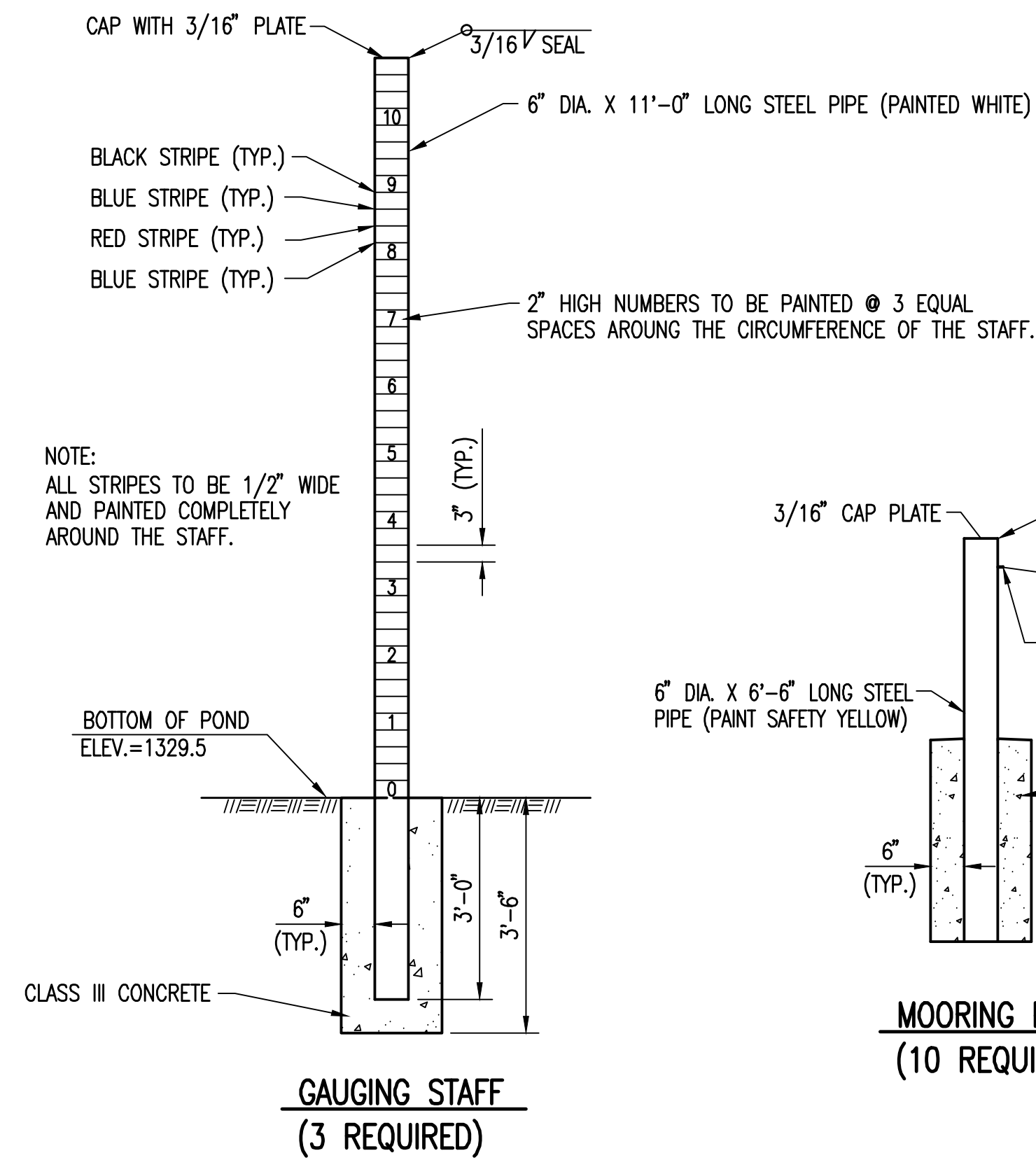



Notes to Contractor:
The owner will drain the rainwater from the existing trickling filter basins at Wichita WWTP No. 2. The existing rock media will be used as a source for the project rip-rap. The Contractor is responsible to pull the needed rock material from the basins and transport to the project site for installation.

- Contractor shall excavate for rip rap to stable subgrade material. The upper 12" of exposed subgrade shall be compacted to a minimum of 95% of Standard Proctor Density (ASTM D-698). Any over excavated areas shall be filled with clayey material with a P.I. minimum of 8 and L.L. minimum of 27.
- Stone for RipRap shall be obtained from WWTP #2, Trickling Filter Basins. If any additional riprap stones are needed to complete work as shown, they shall be paid for at the bid item price for "Additional Rip Rap". Gradation for additional riprap shall be:
5-15% heavier than 180 lbs.
50-70% heavier than 60 lbs.
85-100% heavier than 10 lbs.



No.	Revision	By	Date
FAIRWAY MEADOWS ADDITION TYPICAL SECTIONS AND MISCELLANEOUS DETAILS SANITARY SEWER LAGOON REHABILITATION			
 PEC PROFESSIONAL ENGINEERING CONSULTANTS, P.A. 303 SOUTH TOPEKA WICHITA, KS 67202 316-262-2891 www.pec1.com			
Designed by	DRC	Job No.	187043-003
Drawn by	TDS	Date	July 2019
			Sht. C7 of 14