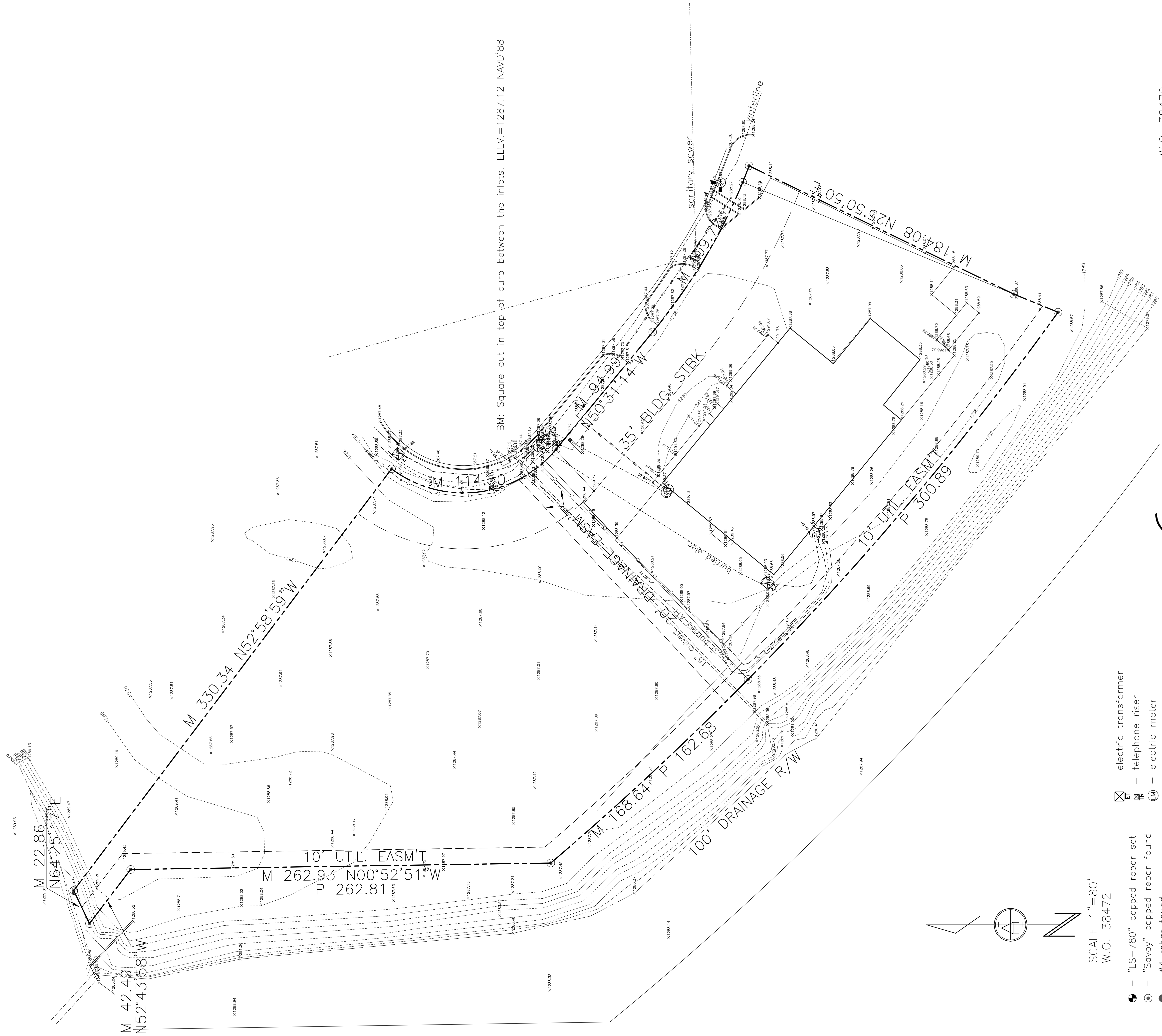


SITE PLAN

LEGAL DESCRIPTION: Lot 5 and 6, Block 1, Commerce Industrial Park Second Add, Wichita, KS



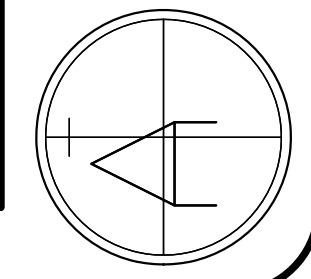
BM: Square cut in top of curb between the inlets. ELEV.=1287.12 NAVD'88

- electric transformer
- telephone riser
- electric meter
- electric meter
- watermeter
- manhole
- guard post
- fire hydrant

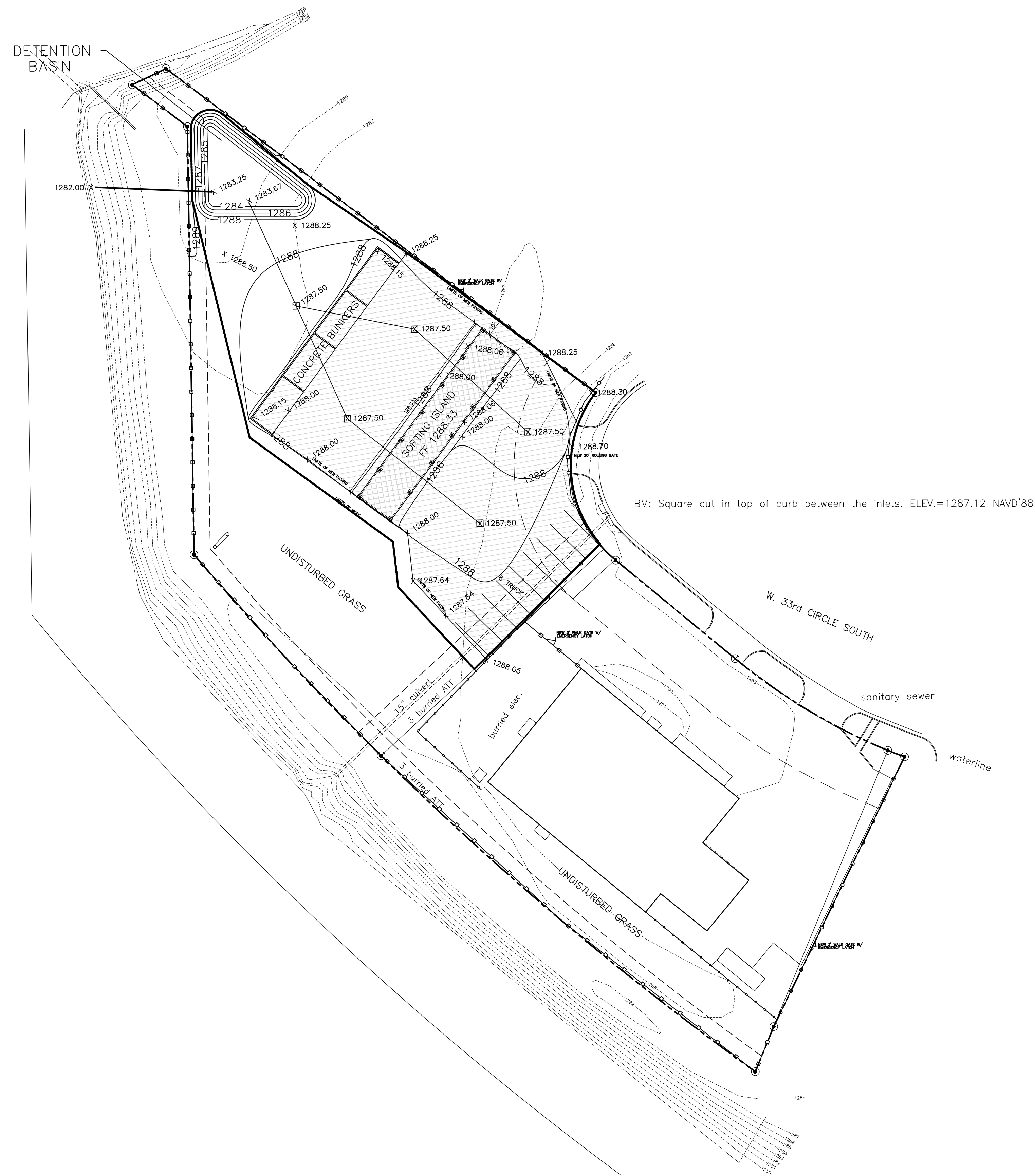
SCALE 1"=80'
W.O. 38472

- "LS-780" capped rebar set
- "Savoy" capped rebar found
- #4 rebar found
- chisled "v" in concrete found
- M — measured distance
- P — plat distance
- R — record distance

BASIS OF BEARING NAD'83 KS SOUTH



W.O. 38472
ARMSTRONG
LAND SURVEY, P.A.
1601 E. HARRY
WICHITA, KS 67211
PH. (316) 263-0082
surveys@armstrong.kscocmail.com



NEW PAVED AREA = 28,271 SQ. FT.
TOTAL DISTURBED AREA = 42,210 SQ. FT.

- 6" CONCRETE SLAB
- 8" CONCRETE PAVING
- NEW / EXISTING FENCE
- EXISTING GRADES
- PROPOSED GRADES
- 1288.50 SPOT GRADES
- 1287.50 SPOT GRADES
- EXISTING FENCE TO REMAIN
- EXISTING FENCE TO BE REMOVED AND REUSED
- NEW FENCE / GATE

SEALED:



12-1-17

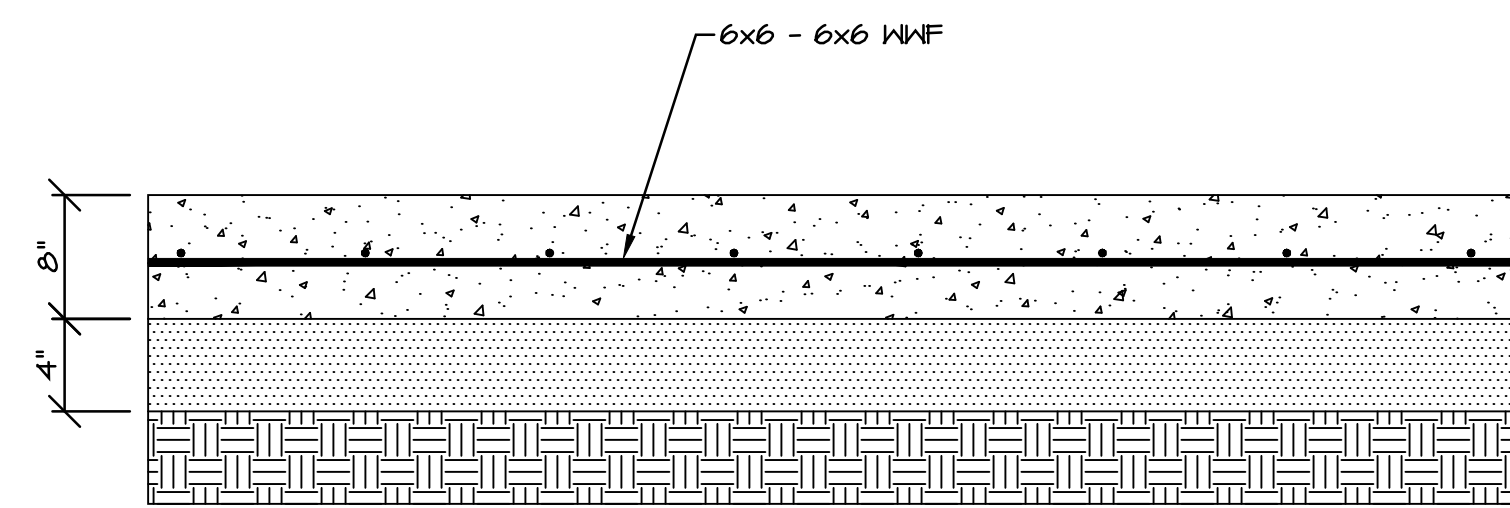
FILE:
DATE: 12-1-17

AIRGAS
4115 W. 33rd Cir. South
WICHITA, KS 67217

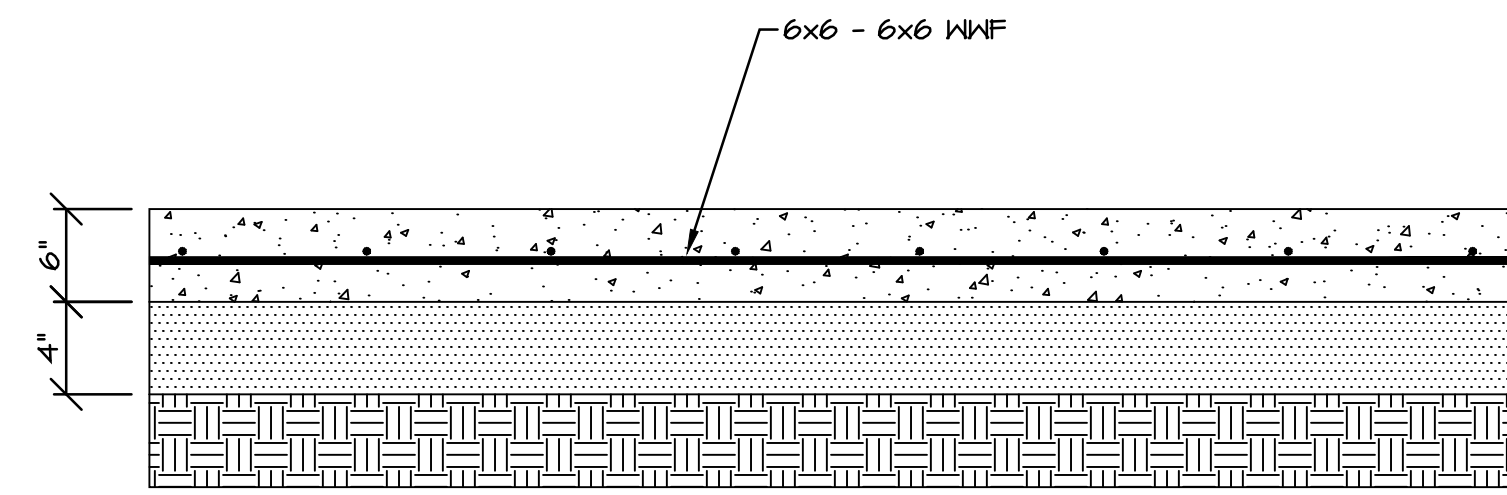
M.A.C. CORPORATION
ENGINEERS • CONSTRUCTION MANAGERS • BUILDERS
900 NW HUNTER DR., STE. 2 SOUTH
BLUE SPRINGS, MO 64015
(816) 229-6090

SHEET NO:

C1.0



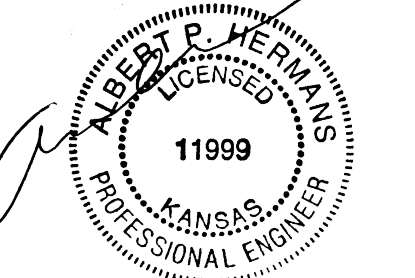
TYP. 8" CONCRETE DETAIL
SCALE: NONE



TYP. 6" CONCRETE DETAIL
SCALE: NONE

- LEGEND
- = 1' - 2" STONE / GRAVEL
 - = 3/4" GRAVEL
 - = CONCRETE
 - = ABS
 - = PROOF ROLL SUBGRADE TO 95% OPTIMUM COMPACTION

SEALED:



12-1-17

FILE:
DATE: 11-13-17

AIRGAS
4115 W. 33rd Cir. South
WICHITA, KS 67217

M.A.C. CORPORATION
ENGINEERS • CONSTRUCTION MANAGERS • BUILDERS
900 NW HUNTER DR., STE. 2 SOUTH
BLUE SPRINGS, MO 64015
(816) 229-6090

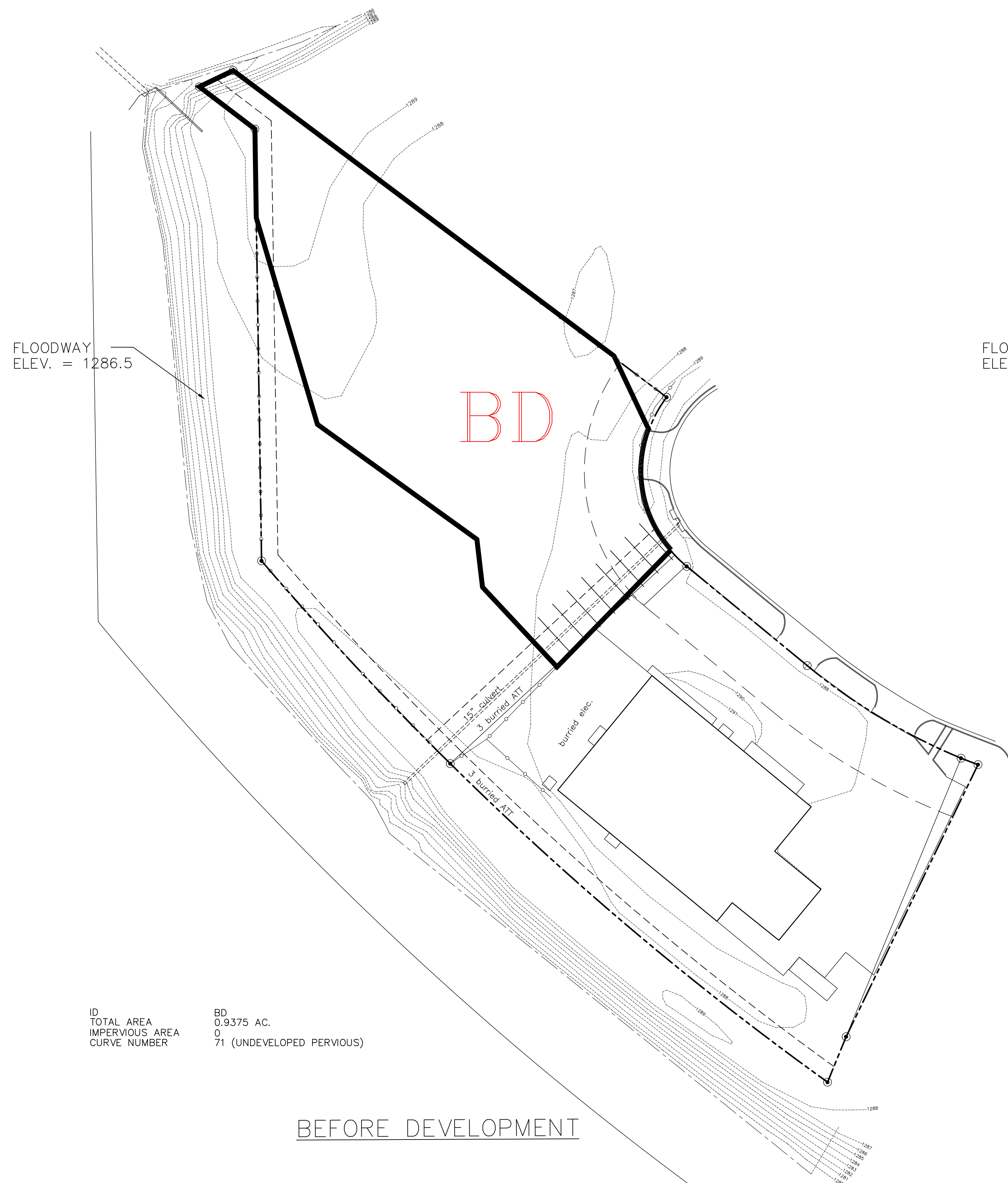
SHEET NO:

C1.1

C1.1 **GRADING DETAILS**
SCALE: 1" = 40'-0"

Copyright© 2017 by M.A.C. Corp.

DATE PLOTTED: PLOTTED



ID
 TOTAL AREA
 IMPERVIOUS AREA
 CURVE NUMBER

BD
 0.9375 AC.
 0
 71 (UNDEVELOPED PERVIOUS)

BEFORE DEVELOPMENT

AFTER DEVELOPMENT

- NEW / EXISTING FENCE
- EXISTING FENCE TO DEMO
- EXISTING GRADES
- 1288 — PROPOSED GRADES
- x 1287.50 SPOT GRADES

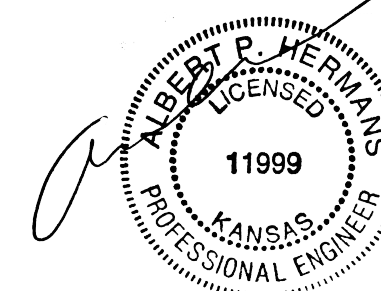
SITE IS LOCATED IN AREA WITH REDUCED FLOOD RISK DUE TO LEVEE (ZONE X) (FEMA)
 SOIL NAME: WALDECK SANDY LOAM, OCCASIONALLY FLOODED
 HYDROLOGIC SOIL GROUP: B

	AD-1	AD-2	AD-3	AD-4	AD-5	AD-6
TOTAL AREA (AC.)	0.2430	0.1552	0.1818	0.1124	0.1433	0.1134
IMPERVIOUS AREA (AC.)	0.2430	0.1552	0	0.1124	0.1397	0
CURVE NUMBER	83	91	92	80	85	80

C1.2 DRAINAGE PLAN
 SCALE: 1" = 40'-0"

Copyright© 2017 by M.A.C. Corp.

SEALED:



12-1-17

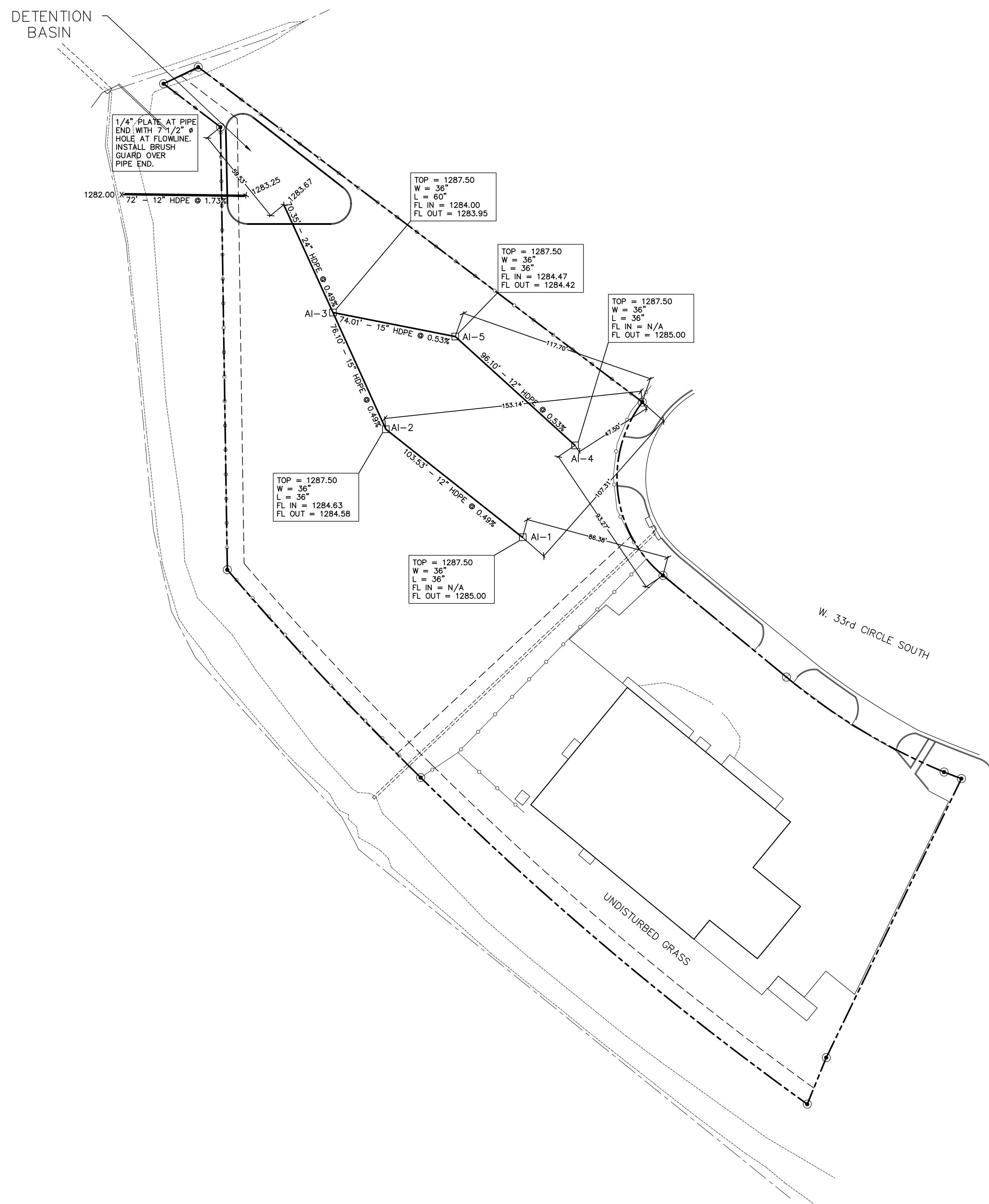
FILE:
 DATE: 11-28-17

AIRGAS
 4115 W. 33rd Cir. South
 WICHITA, KS 67217

M.A.C. CORPORATION
 ENGINEERS • CONSTRUCTION MANAGERS • BUILDERS
 900 NW HUNTER DR., STE. 2 SOUTH
 BLUE SPRINGS, MO 64015
 (816) 229-6090

SHEET NO:

C1.2



C2.0 STORM SEWER PLAN
SCALE: 1" = 40'-0"

Copyright© 2017 by M.A.C. Corp.

SEALED:



12-1-17

FILE:
DATE: 11-30-17

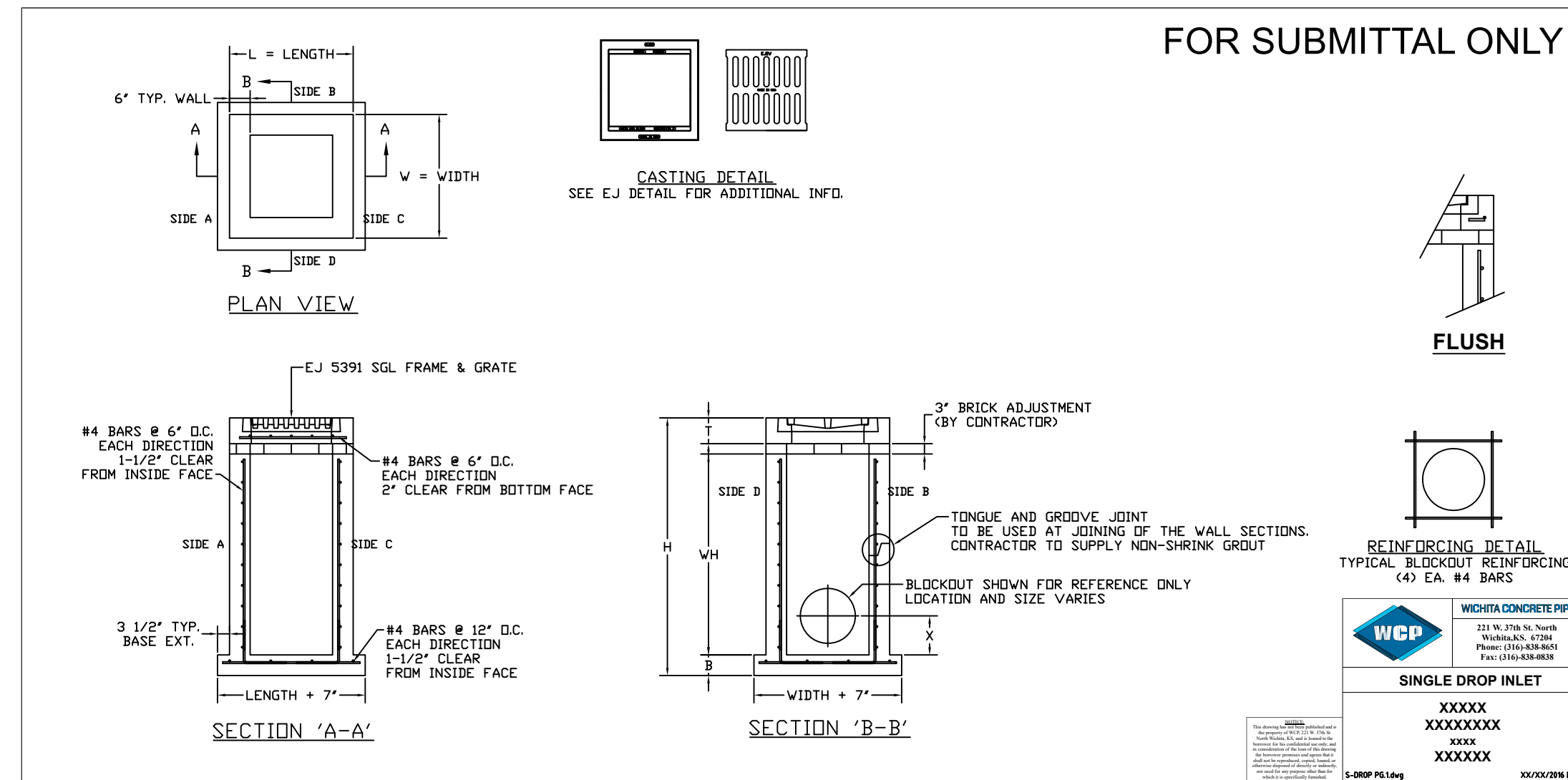
AIRGAS
4115 W. 33rd Cir. South
WICHITA, KS 67217

M.A.C. CORPORATION
ENGINEERS • CONSTRUCTION MANAGERS • BUILDERS
900 NW HUNTER DR., STE. 2 SOUTH
BLUE SPRINGS, MO 64015
(816) 229-6090

SHEET NO:

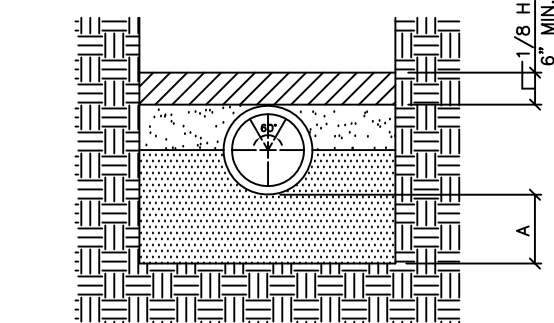
C2.0

INLET CHART										BLOCKOUT SIDE "A"		BLOCKOUT SIDE "B"		BLOCKOUT SIDE "C"		BLOCKOUT SIDE "D"	
STRUCTURE ID	TOP EL.	BASE EL.	L	W	H	WH	ADJ	T	B	DIAMETER	FL	DIAMETER	FL	DIAMETER	FL	DIAMETER	FL
AI-1	1287.50	1284.25	36	36	3'-3"	1'-10"	3	8	6	12	1285.00			15	1284.63		
AI-2	1287.50	1283.83	36	36	3'-8"	2'-3"	3	8	6	12	1284.58						
AI-3	1287.50	1283.20	60	36	4'-4"	2'-11"	3	8	6	15	1283.95	15	1284.00	24	1284.00		
AI-4	1287.50	1284.25	36	36	3'-3"	1'-10"	3	8	6	12	1285.00						
AI-5	1287.50	1283.67	36	36	3'-10"	2'-5"	3	8	6	12	1284.42			15	1284.47		



TYP. AREA INLET DETAILS
SCALE: NONE

- NOTES:
- USE MCIB MIX A618-1-4 THROUGHOUT.
 - THE FIRST DIMENSION LISTED IN THE CONSTRUCTION NOTES IS THE "L" DIMENSION. THE SECOND DIMENSION IS THE "W" DIMENSION.
 - FLOOR OF INLET SHALL BE SHAPED WITH NON-REINFORCED MCIB MIX A618-1-4 INVERT TO PROVIDE SMOOTH FLOW.
 - CAST IRON STEPS SHALL BE SPACED AT 1'-4" O.C. VERTICALLY.
 - BEVEL ALL EXPOSED EDGES WITH 3/4" TRIANGULAR MOLDING.



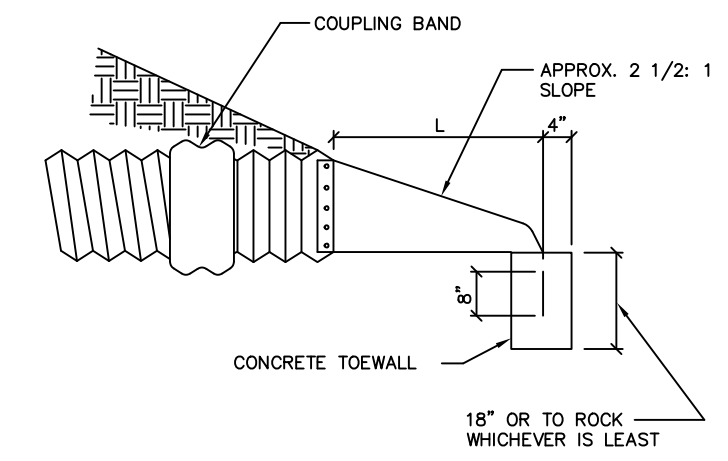
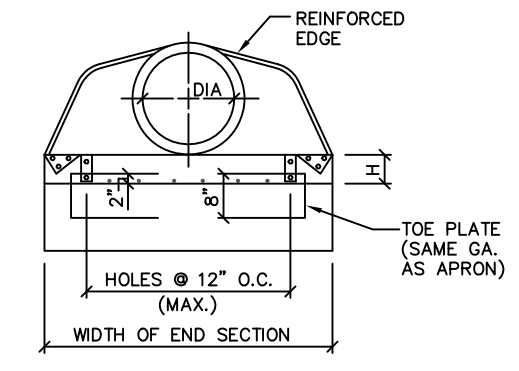
FIRST CLASS BEDDING
CLASS B

- LEGEND
- Be = OUTSIDE DIAMETER OF PIPE
 - H = BACKFILL COVER ABOVE TOP OF PIPE
 - D = NOMINAL PIPE SIZE
 - A = FILL BELOW PIPE (SEE TABLE)
 - [Pattern] = HAND PLACED BACKFILL
 - [Pattern] = TAMPED BACKFILL
 - [Pattern] = GRANULAR BACKFILL
 - [Pattern] = CONCRETE

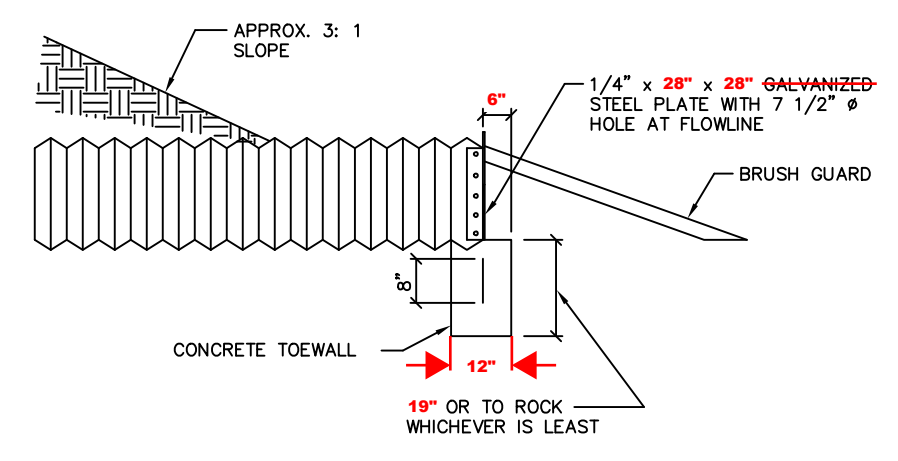
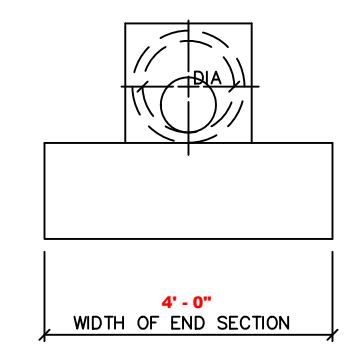
D	"A" MIN. IN SOIL	"A" MIN. IN ROCK
27" & SMALLER	3"	6"
30" TO 36"	4"	9"
36" & LARGER	6"	12"

PIPE SIZE (INCHES)	MINIMUM TRENCH WIDTH (INCHES)	MINIMUM SIDE WALL CLEARANCE (INCHES)
12	30	6
15	30	6
18	35	6
21	39	6.5
24	44	7
27	49	8
30	54	8.5
33	58	9
36	64	10
42	73	11
48	83	12.5

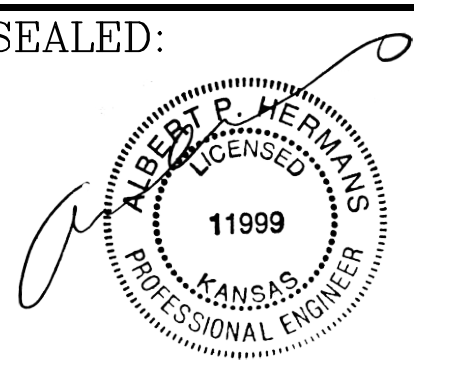
- NOTES:
- GRANULAR FILL TO BE CRUSHED STONE OR PEA GRAVEL WITH NOT LESS THAN 90% PASSING 1/2" AND NOT LESS THAN 90% TO BE RETAINED ON A #4 TO BE PLACED IN NOT MORE THAN 6" LAYERS AND COMPACTED BY SLICING WITH A SHOVEL.
 - TAMPED BACKFILL SHALL BE FINELY DIVIDED JOB EXCAVATED MATERIAL FREE FROM DEBRIS, ORGANIC MATERIAL, AND STONES, COMPACTED TO 95% MAXIMUM DENSITY AS DETERMINED BY AASHTO STANDARD METHOD T-99. GRANULAR FILL MAY BE SUBSTITUTED FOR ALL OR PART OF TAMPED BACKFILL.
 - HAND-PLACED BACKFILL SHALL BE FINELY DIVIDED MATERIAL FREE FROM DEBRIS AND STONE.



HDPE END SECTION
W/ CONCRETE TOEWALL



POND DRAINAGE PIPE END
W/ CONCRETE TOEWALL



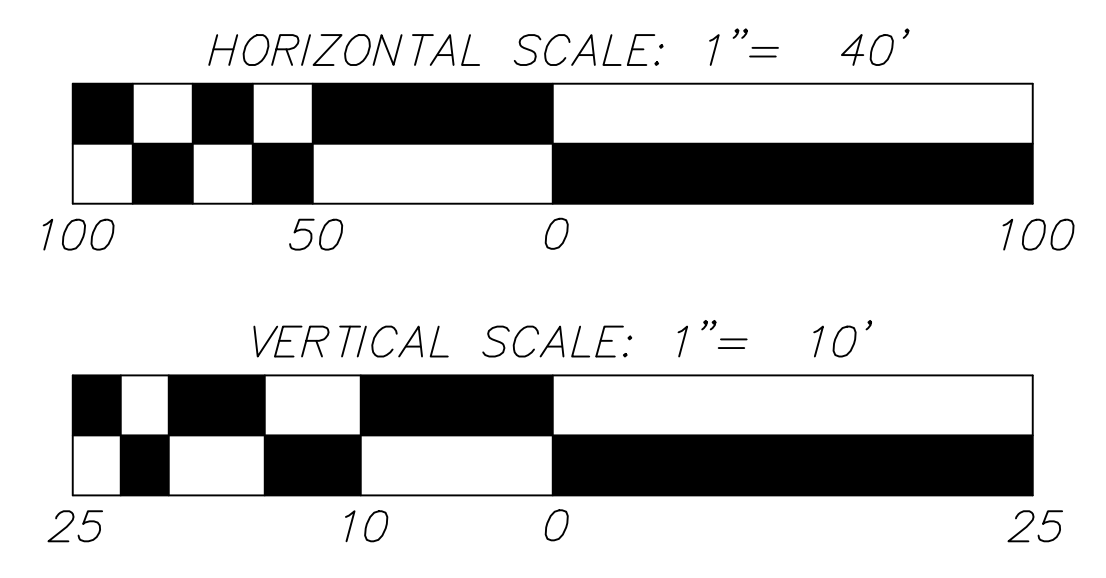
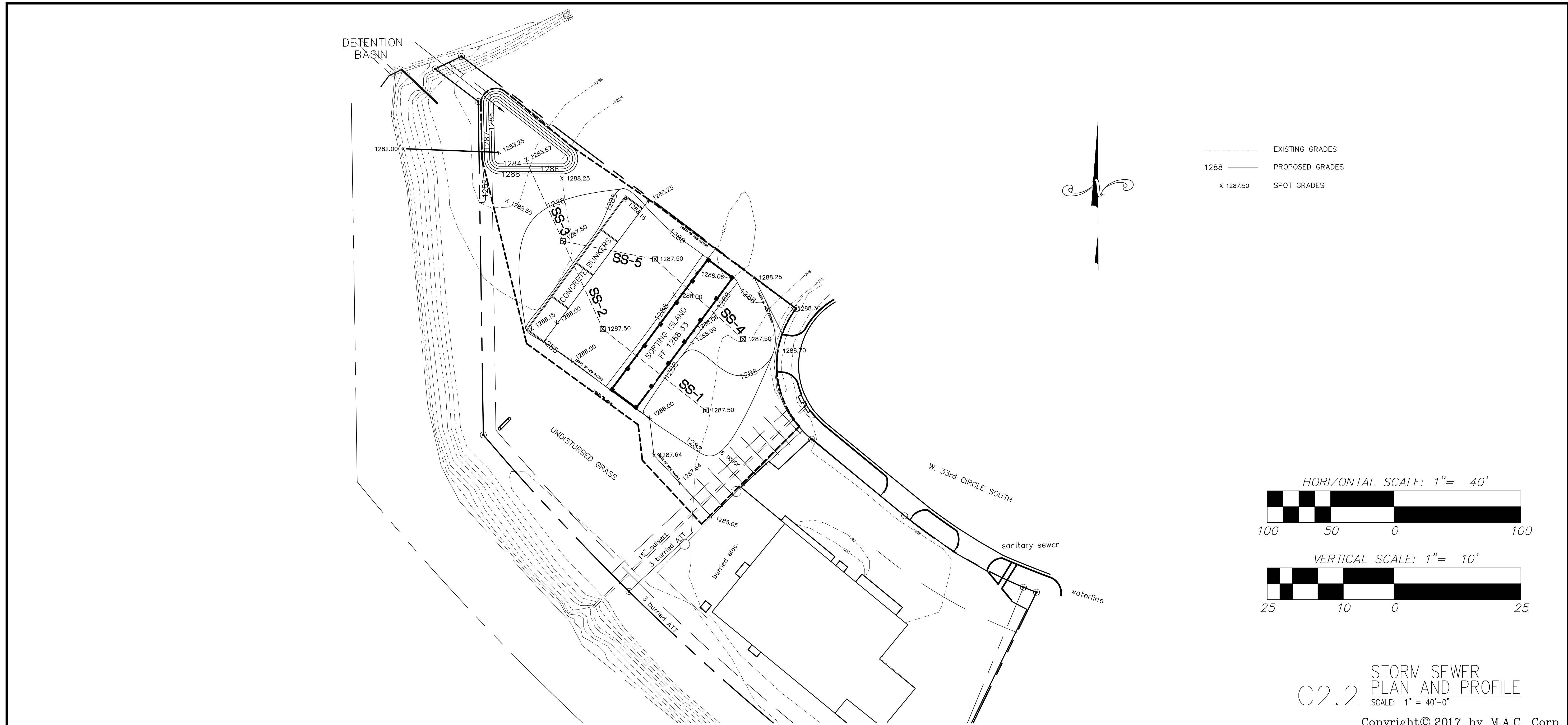
12-1-17
FILE: DATE: 11-28-17

AIRGAS
4115 W. 33rd Cir. South
WICHITA, KS 67217

M.A.C. CORPORATION
ENGINEERS • CONSTRUCTION MANAGERS • BUILDERS
900 NW HUNTER DR., STE. 2 SOUTH
BLUE SPRINGS, MO 64015
(816) 229-6090

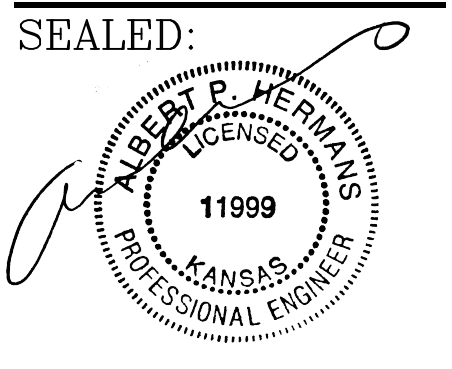
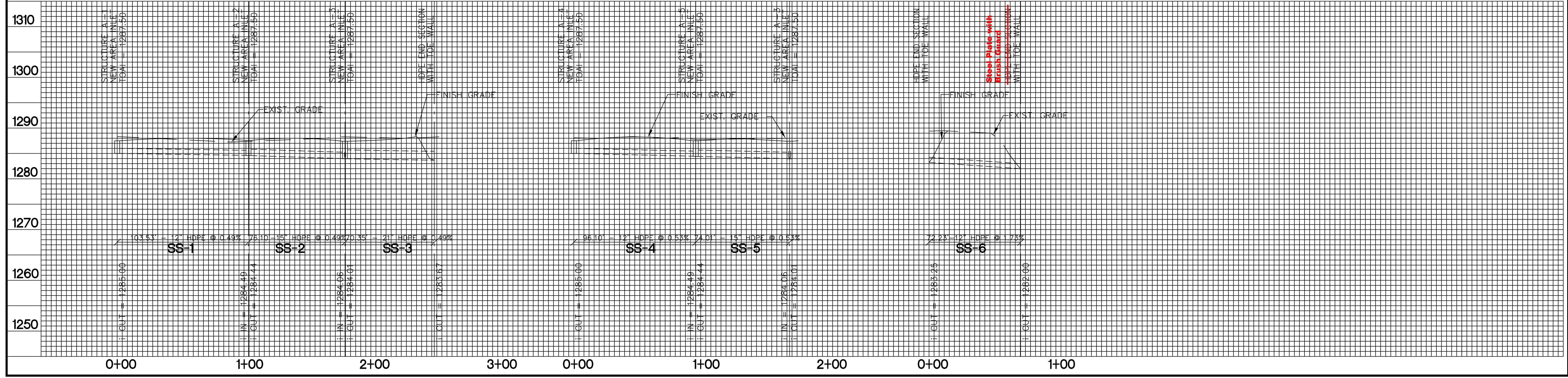
SHEET NO:

C2.1



C2.2 STORM SEWER
PLAN AND PROFILE
SCALE: 1" = 40'-0"

Copyright © 2017 by M.A.C. Corp.

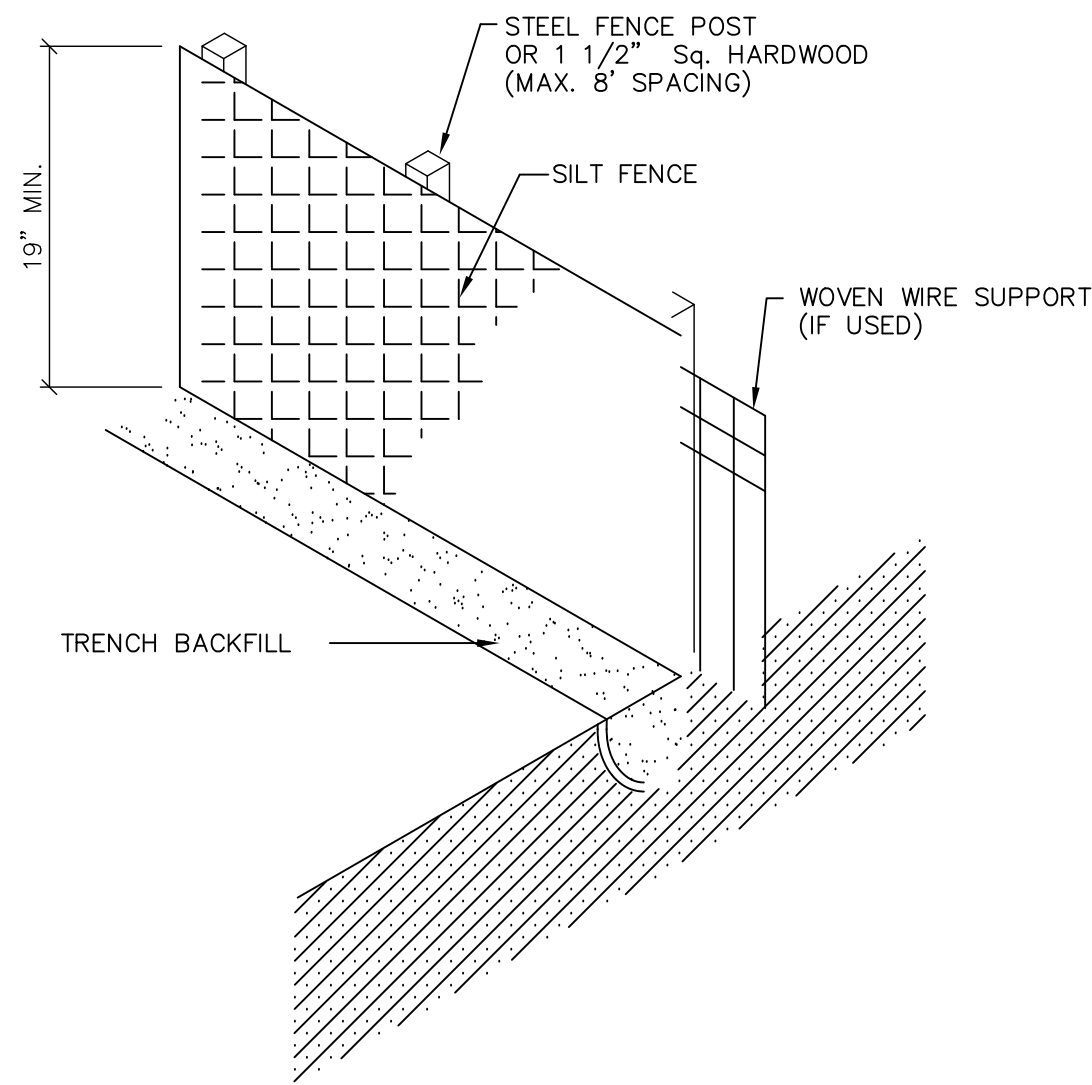


SEALED:
 12-1-17
 FILE:
 DATE: 11-28-17

AIRGAS
 4115 W. 33rd Cir. South
 WICHITA, KS 67217

M.A.C. CORPORATION
 ENGINEERS • CONSTRUCTION MANAGERS • BUILDERS
 900 NW HUNTER DR., STE. 2 SOUTH
 BLUE SPRINGS, MO 64015
 (816) 229-6090

SHEET NO:
C2.2



SILT FENCE DETAIL
NOT TO SCALE

CONSTRUCTION SPECIFICATIONS

POSTS WHICH SUPPORT THE SILT FENCE SHALL BE INSTALLED ON A SLIGHT ANGLE TOWARD THE ANTICIPATED RUNOFF SOURCE AND SPACED AT A MAX. 8' APART OR TO SILT FENCE MANUFACTURER SPECIFICATIONS, WHICHEVER IS

SILT FENCE SHALL BE TRENCHED IN WITH A SPADE OR MECHANICAL TRENCHER SO THAT THE DOWNSLOPE FACE OF THE TRENCH IS FLAT AND PERPENDICULAR TO

THE TRENCH SHOULD BE A MINIMUM OF 6" DEEP 3-4" WIDE TO ALLOW FOR THE SILT FENCE TO BE LAID IN THE GROUND AND BACKFILLED.

SILT FENCE SHOULD BE SECURELY FASTENED TO EACH SUPPORT POST OR TO WOVEN WIRE WHICH IS IN TURN ATTACHED TO THE FENCE POSTS.

INSPECTION SHALL BE FREQUENT AND REPAIR OR REPLACEMENT SHALL BE MADE

SILT FENCE SHALL BE REMOVED WHEN IT HAS SERVED ITS USEFULNESS SO AS NOT TO BLOCK OR IMPEDE STORM FLOW OR DRAINAGE.

SEDIMENT TRAPPED BY THIS PRACTICE SHALL BE UNIFORMLY DISTRIBUTED ON THE SOURCE AREA PRIOR TO TOPSOILING.

SILT FENCE SHALL BE MIRAFI-100X FILTER FABRIC OR APPROVED EQUAL.

EROSION CONTROL NOTES:

EROSION AND SEDIMENT CONTROL DEVICES MUST BE INSTALLED PRIOR TO ANY GRADING ONSITE.

ADDITIONAL EROSION CONTROL MEASURES WILL BE EMPLOYED WHERE DETERMINED NECESSARY BY ACTUAL SITE CONDITIONS.

PRIOR TO ANY OTHER CONSTRUCTION, A STABILIZED CONSTRUCTION ENTRANCE SHALL BE CONSTRUCTED AT EACH POINT OF ENTRY TO OR EXIT FROM THE SITE.

THE CONSTRUCTION EXIT SHALL BE MAINTAINED IN A CONDITION WHICH WILL PREVENT TRACKING OR FLOW OF MUD ON TO PUBLIC RIGHT-OF-WAY. THIS MAY REQUIRE PERIODIC TOP DRESSING WITH STONE, AS CONDITIONS DEMAND, AND REPAIR AND CLEANOUT OF ANY STRUCTURES USED TO TRAP SEDIMENT. ALL MATERIALS SOILED, DROPPED, WASHED, OR TRACKED FROM A VEHICLE OR SITE ONTO PUBLIC ROADWAY OR INTO STORM DRAIN MUST BE REMOVED IMMEDIATELY.

IMMEDIATELY AFTER THE ESTABLISHMENT OF THE CONSTRUCTION EXIT/ENTRANCE, ALL PERIMETER EROSION CONTROL DEVICES AND STORM WATER MANAGEMENT DEVICES SHALL BE INSTALLED PRIOR TO ANY OTHER CONSTRUCTION.

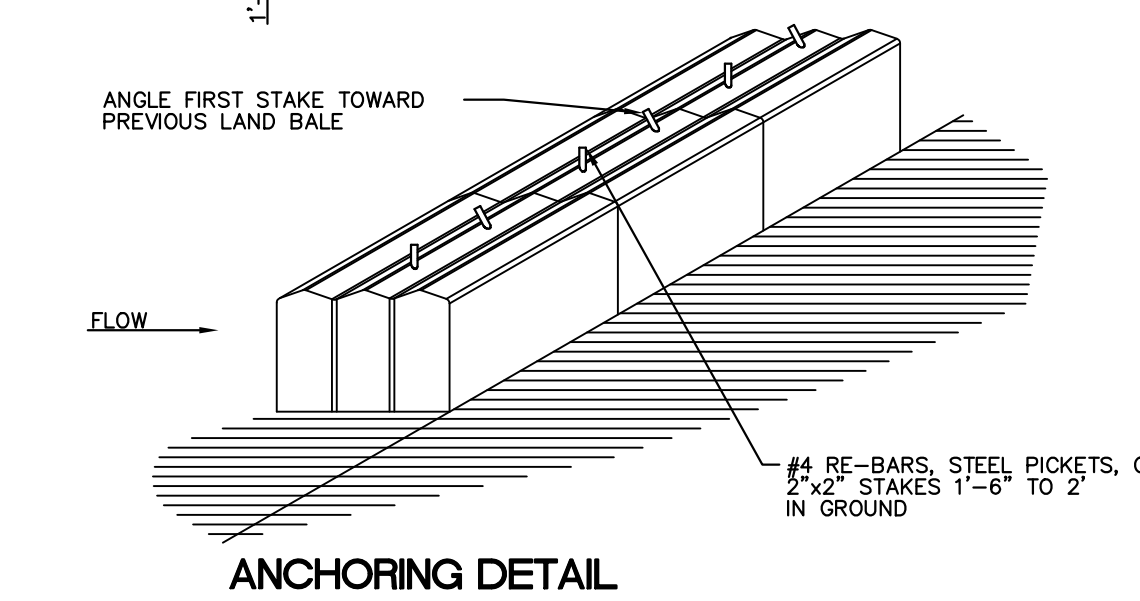
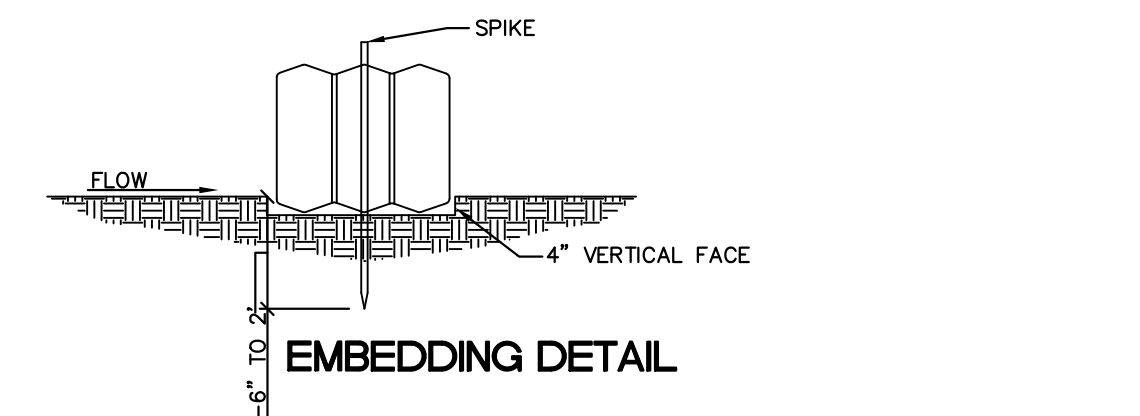
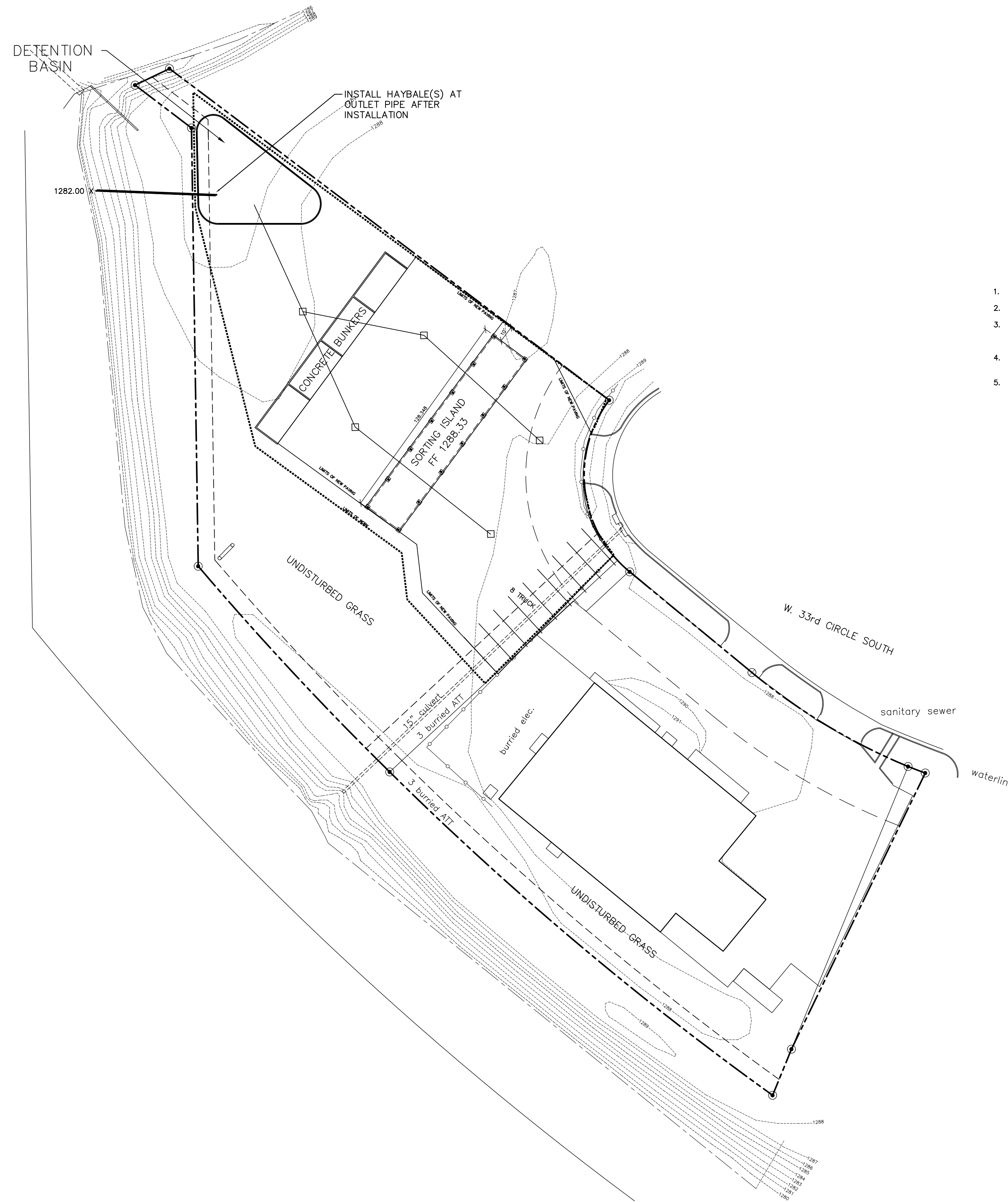
ALL SILT BARRIERS MUST BE PLACED AS ACCESS IS OBTAINED DURING CLEARING. NO GRADING SHALL BE DONE UNTIL SILT BARRIERS ARE INSTALLED AND DETENTION FACILITIES ARE CONSTRUCTED.

CONTRACTOR SHALL MAINTAIN ALL EROSION CONTROL MEASURES UNTIL PERMANENT VEGETATION HAS BEEN ESTABLISHED.

CONTRACTOR SHALL CLEAN OUT ALL SEDIMENT PONDS WHEN REQUIRED BY THE ENGINEER OR INSPECTOR.

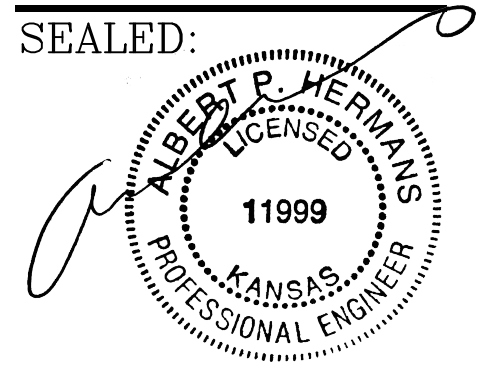
CONTRACTOR SHALL INSPECT EROSION CONTROL MEASURES AT THE END OF EACH DAY TO INSURE THAT THE DEVICES ARE FUNCTIONING PROPERLY.

----- SUGGESTED SILT FENCE LOCATIONS



1. BALES SHALL BE PLACED IN A ROW WITH ENDS TIGHTLY ABUTTING THE ADJACENT BALES.
2. EACH BALE SHALL BE EMBEDDED IN THE SOIL A MINIMUM OF 4".
3. BALES SHALL BE SECURELY ANCHORED IN PLACE BY STAKES OR RE-BARS DRIVEN THROUGH THE BALES. THE FIRST STAKE IN EACH BALE SHALL BE ANGLED TOWARD PREVIOUSLY LAID BALE TO FORCE BALES TOGETHER.
4. INSPECTION SHALL BE FREQUENT AND REPAIR OR REPLACEMENT SHALL BE MADE PROMPTLY AS NEEDED.
5. BALES SHALL BE REMOVED WHEN THEY HAVE SERVED THEIR USEFULNESS SO AS NOT TO BLOCK OR IMPEDE STORM FLOW OR DRAINAGE BY THE OWNER.

STRAW BAIL DIKE DETAIL
NOT TO SCALE



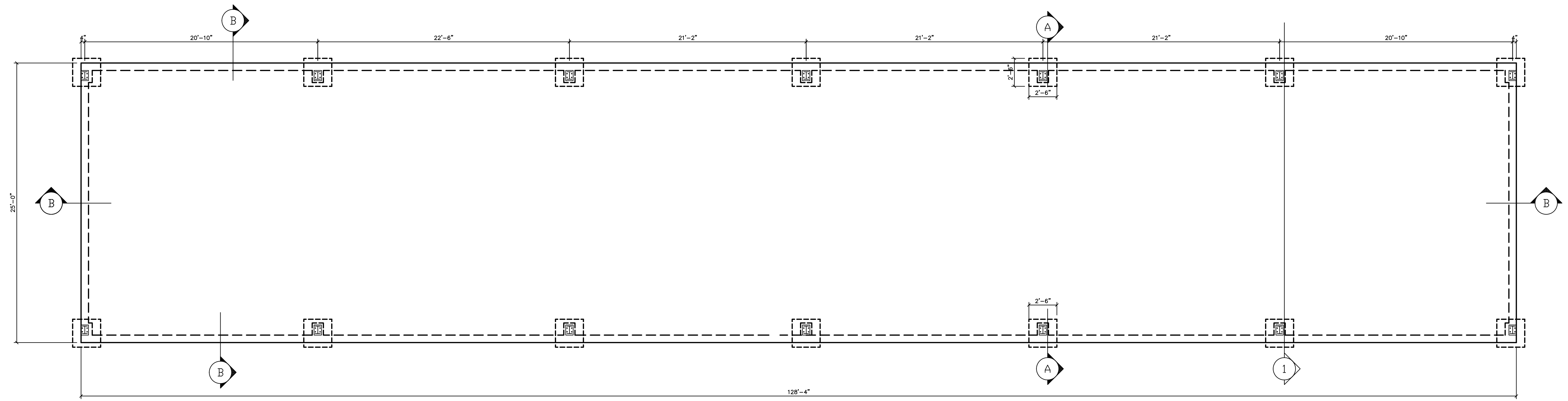
SEALED:
 12-1-17
 FILE: DATE: 11-15-17

AIRGAS
 4115 W. 33rd CIR South
 WICHITA, KS 67217

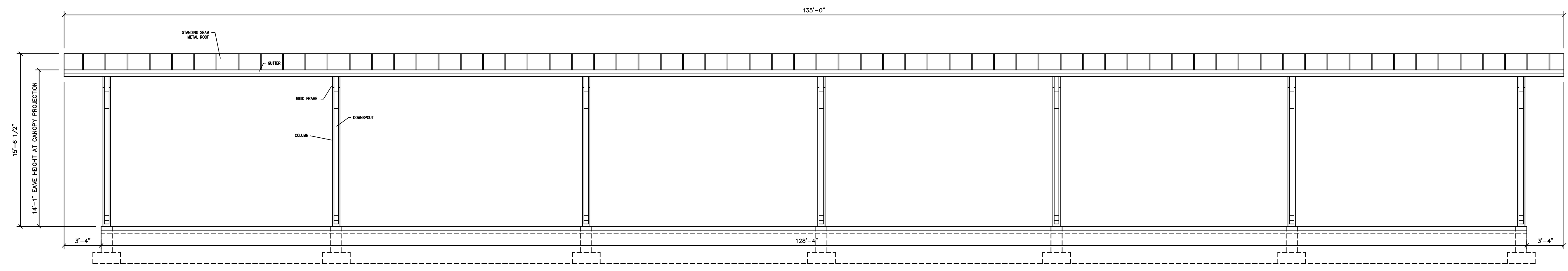
M.A.C. CORPORATION
 ENGINEERS • CONSTRUCTION MANAGERS • BUILDERS
 900 NW HUNTER DR., STE. 2 SOUTH
 BLUE SPRINGS, MO 64015
 (816) 229-6090

SHEET NO:

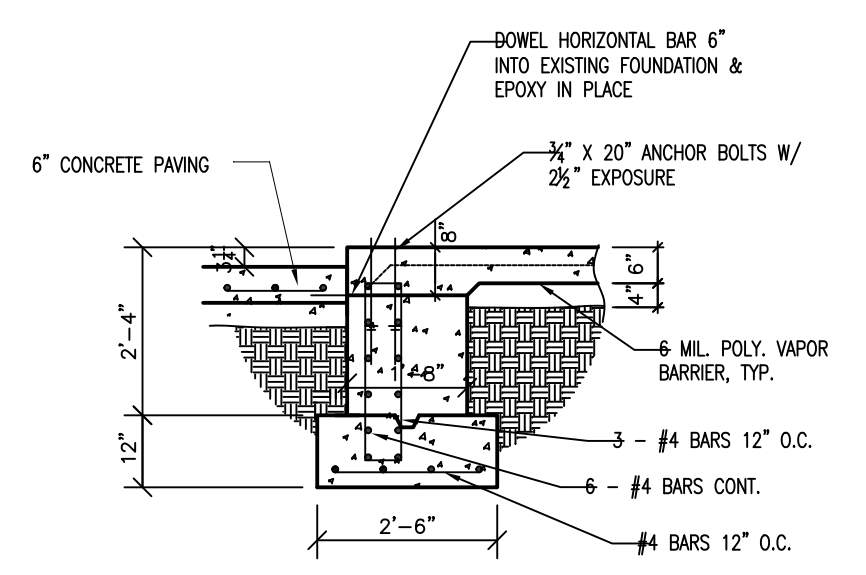
S1



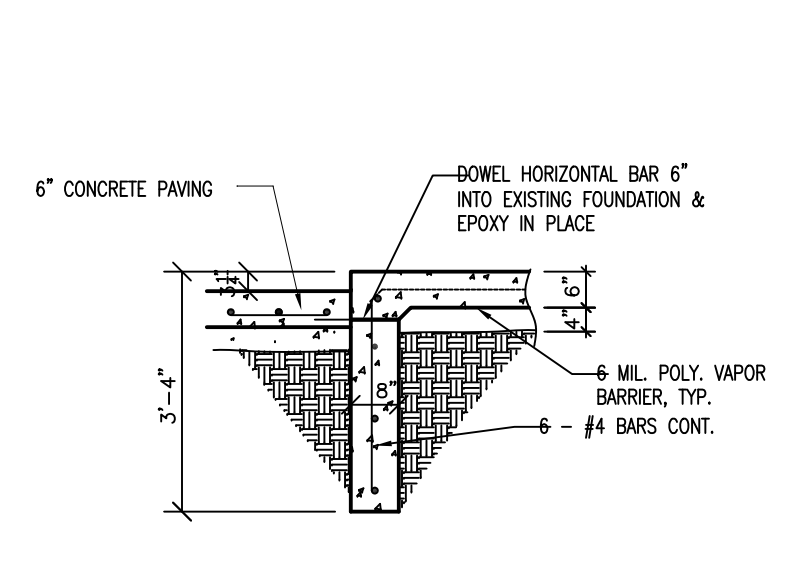
FOUNDATION PLAN
 SCALE: 3/16"=1'-0"



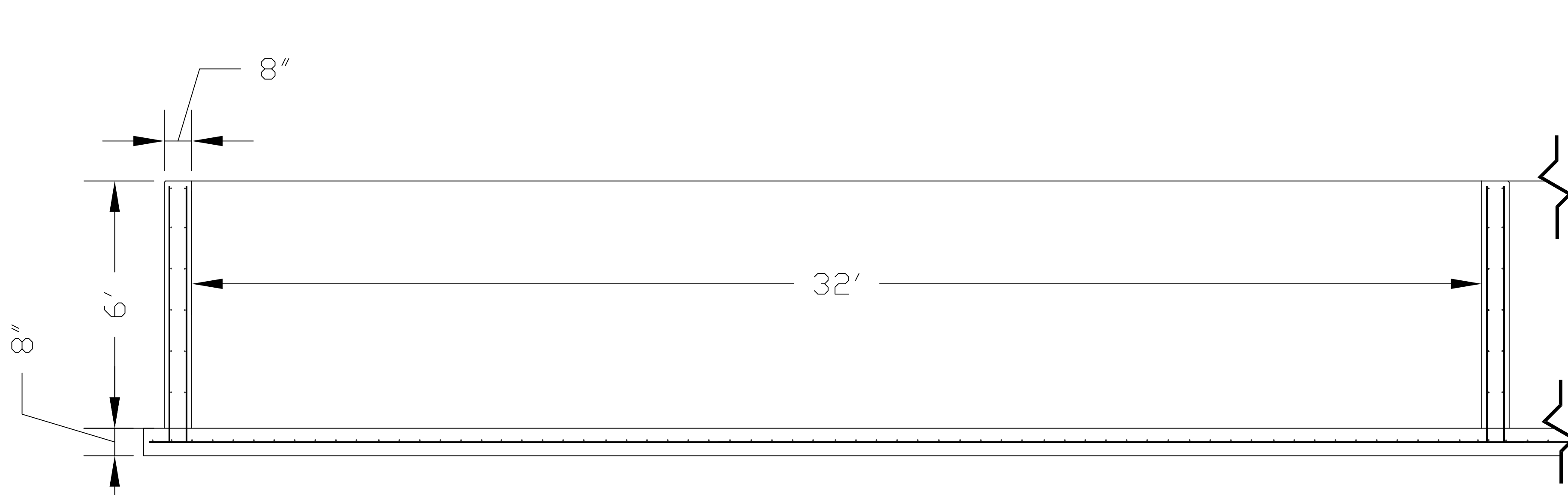
SOUTH ELEVATION
 SCALE: 3/16"=1'-0"



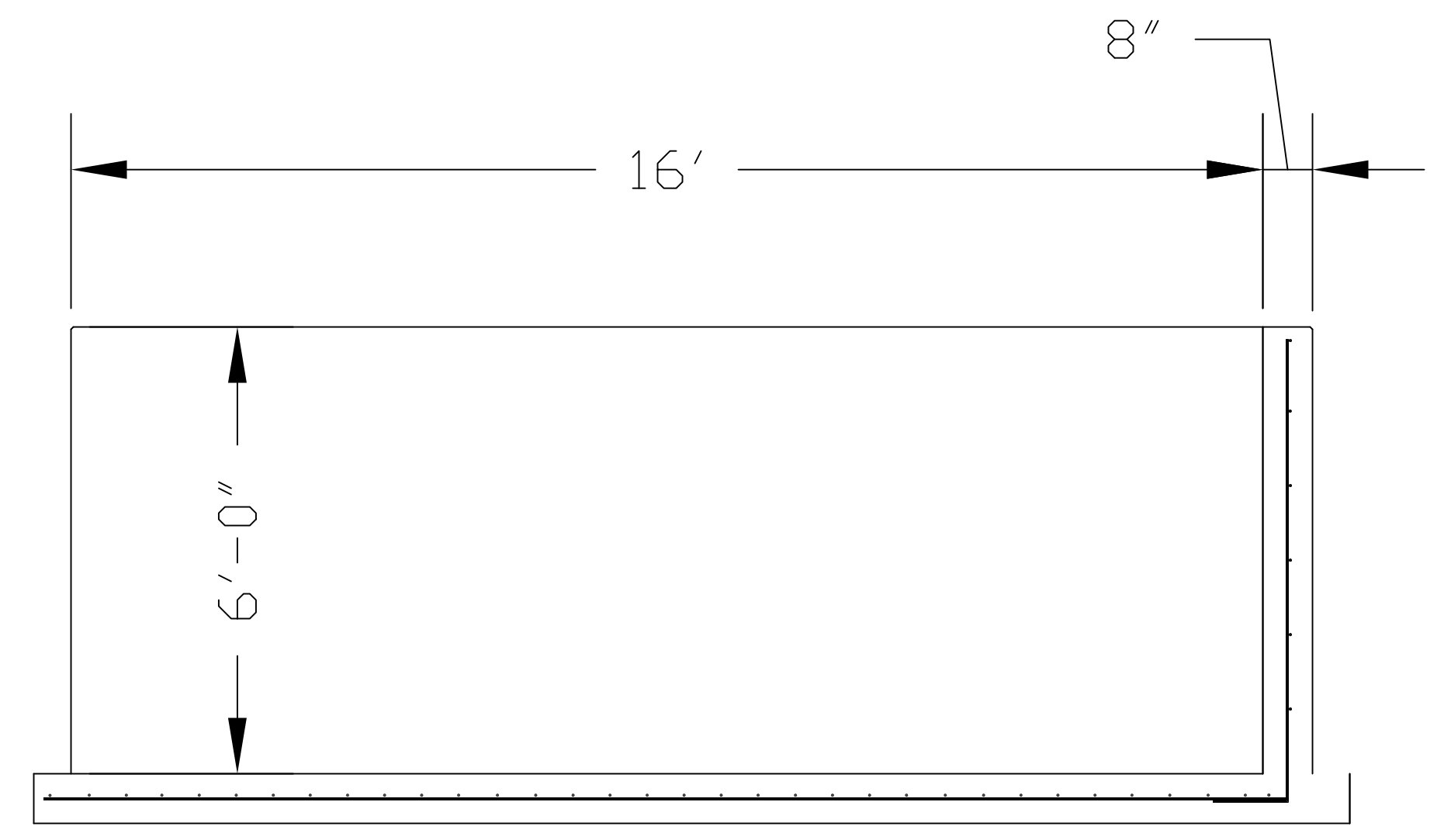
SECTION "A"
 SCALE: 3/8"=1'-0"



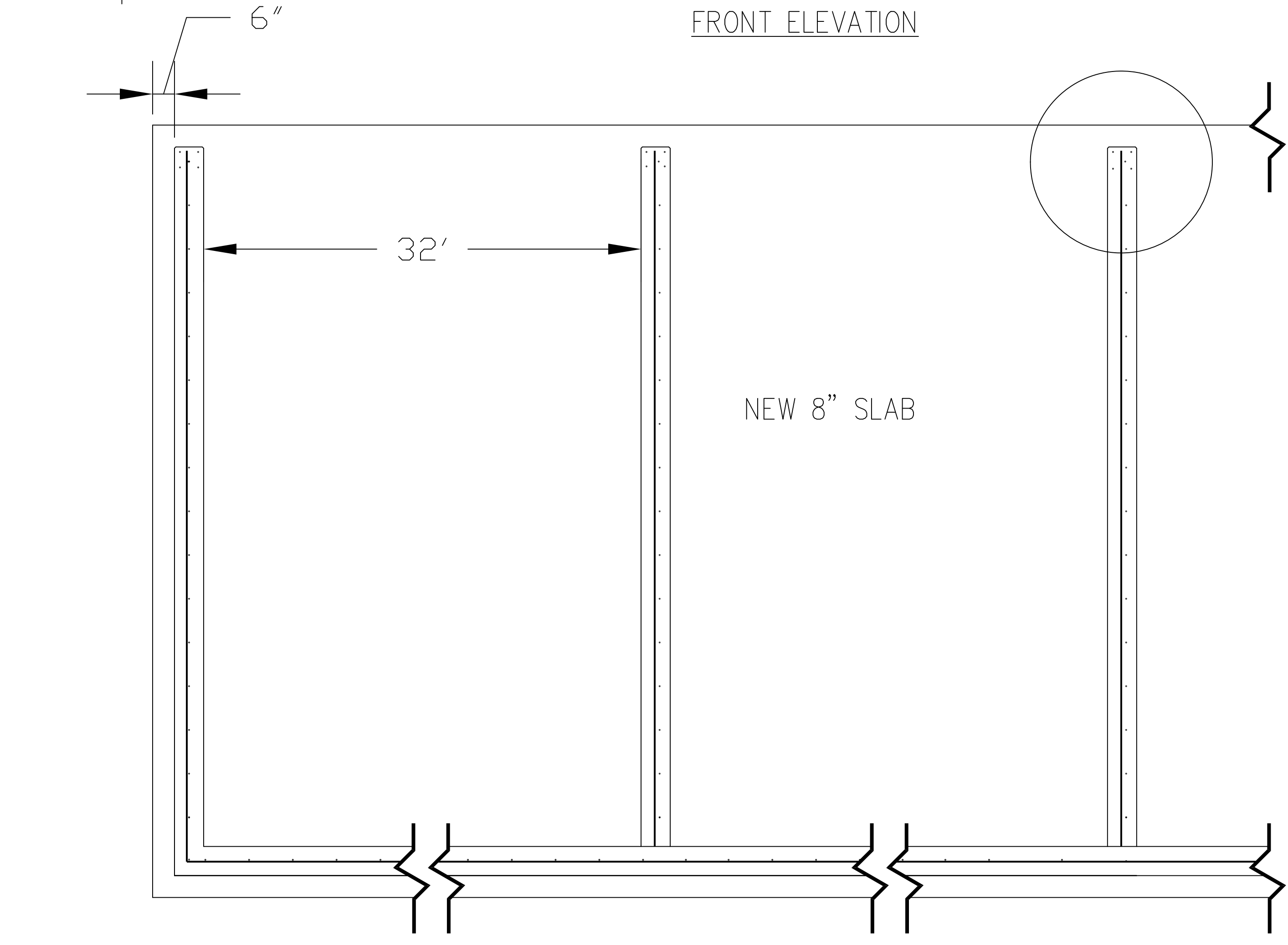
SECTION "B"
 SCALE: 3/8"=1'-0"



FRONT ELEVATION



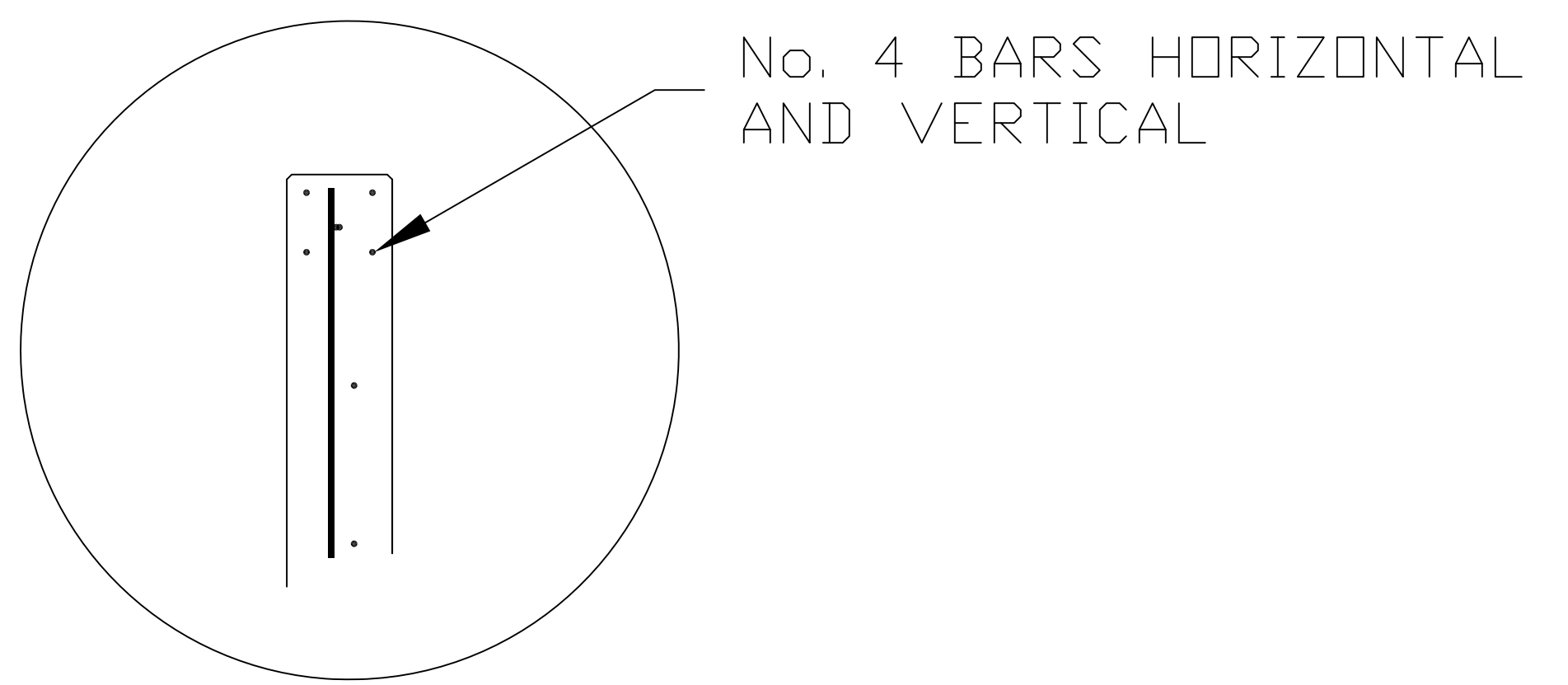
SIDE ELEVATION



PLAN VIEW

NOTES:

1. CONCRETE TO BE 4,000 PSI WITH 6% AIR ENTRAINMENT
2. REINFORCING STEEL TO BE GRADE 60, 12" OC EW
3. LAP REINFORCING STEEL 48 BAR DIAMETERS
4. USE 3/4" CHAMFER STRIP ON ALL OUTSIDE CORNERS
5. FLOOR ELEVATION TO BE LEVEL WITH SURROUNDING GRADES, WITH 2% POSITIVE DRAINAGE, DO NOT POND WATER
6. PLACE 4 VERTICAL BARS IN ENDS OF WALLS
7. VERTICAL BARS TO HAVE A 6", 90 DEGREE BEND, AND BE TIED TO THE HORIZONTAL REINFORCING MAT



No. 4 BARS HORIZONTAL AND VERTICAL

SEALED:

 11999
 KANSAS
 PROFESSIONAL ENGINEER
 12-1-17

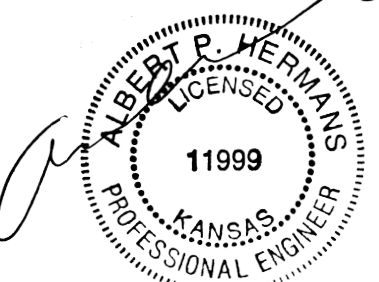
FILE: 10-15-17
 DATE: 10-15-17

AIRGAS WICHITA
 WICHITA, KS

M.A.C. CORPORATION
 ENGINEERS • CONSTRUCTION MANAGERS • BUILDERS
 900 NW HUNTER DR, STE. 2 SOUTH • 1660 17th, STE. 200
 BLUE SPRINGS, MO 64015 DENVER, CO 80202
 (816) 229-6090 (816) 229-6093

SHEET NO:

22 of



NEW WORK SPECIFICATIONS:

THE INSTALLATION SHALL CONFORM TO THE LATEST EDITION OF THE NATIONAL ELECTRICAL CODE AND ALL LOCAL CODES.

FURNISH MATERIALS AND LABOR FOR A COMPLETE ELECTRICAL INSTALLATION AS INDICATED IN THESE DOCUMENTS.

MATERIAL, APPARATUS AND EQUIPMENT SHALL BE NEW AND SHALL BEAR THE UNDERWRITERS LABEL WHEN SUCH LABELS ARE AVAILABLE.

CONDUIT SHALL BE WHERE REQUIRED BY CODE.

CONDUCTORS FOR BRANCH CIRCUITS SHALL BE COPPER TYPE THHN; AND SHALL BE STRANDED. BRANCH CIRCUIT CONDUCTORS SHALL BE #12 SIZE AS SHOWN. CONDUCTORS SHALL BE COLOR CODED IN ACCORDANCE WITH ELECTRICAL CODE REQUIREMENTS.

PROVIDE OUTLET BOX FOR EACH LIGHTING FIXTURE, WIRING DEVICE OR JUNCTION POINT. BOXES SHALL BE SUFFICIENT CAPACITY FOR THE NUMBER OF CONDUCTORS AND SPLICES IN THE BOX IN ACCORDANCE WITH THE ELECTRICAL CODE.

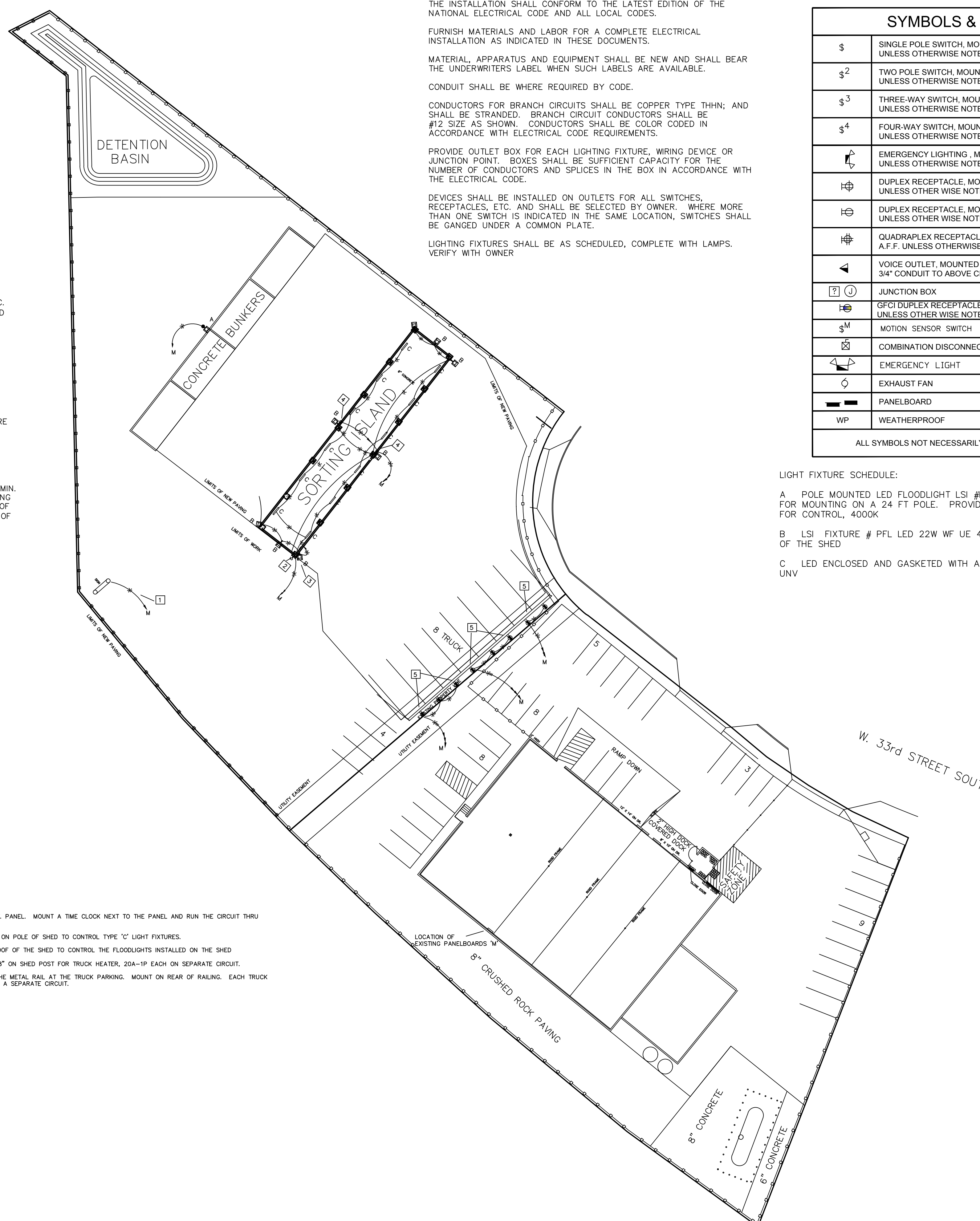
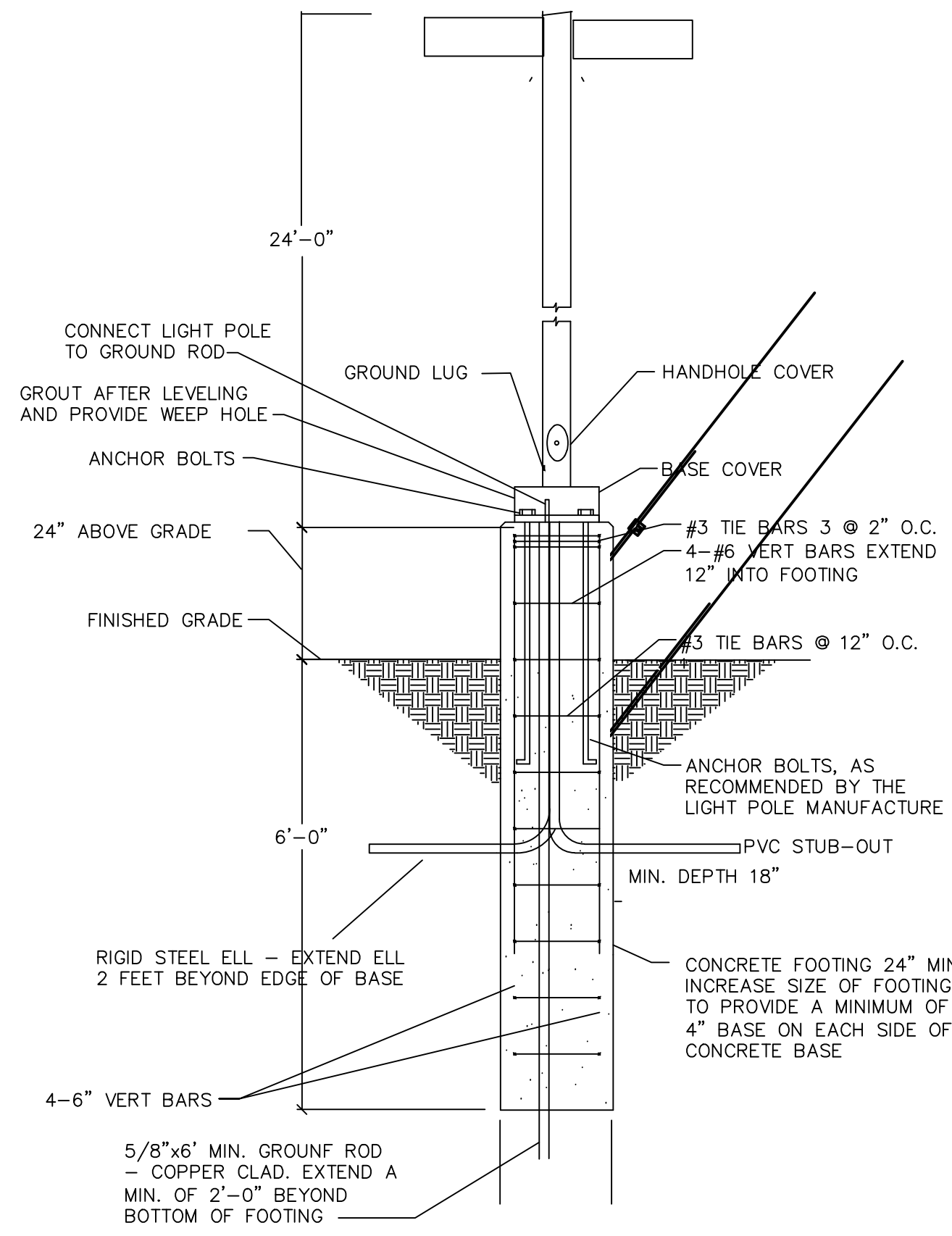
DEVICES SHALL BE INSTALLED ON OUTLETS FOR ALL SWITCHES, RECEPTACLES, ETC. AND SHALL BE SELECTED BY OWNER. WHERE MORE THAN ONE SWITCH IS INDICATED IN THE SAME LOCATION, SWITCHES SHALL BE GANGED UNDER A COMMON PLATE.

LIGHTING FIXTURES SHALL BE AS SCHEDULED, COMPLETE WITH LAMPS. VERIFY WITH OWNER

SYMBOLS & LEGEND	
⊠	SINGLE POLE SWITCH, MOUNTED AT 46" O.C. A.F.F. UNLESS OTHERWISE NOTED.
⊠	TWO POLE SWITCH, MOUNTED AT 46" O.C. A.F.F. UNLESS OTHERWISE NOTED.
⊠	THREE-WAY SWITCH, MOUNTED AT 46" O.C. A.F.F. UNLESS OTHERWISE NOTED.
⊠	FOUR-WAY SWITCH, MOUNTED AT 46" O.C. A.F.F. UNLESS OTHERWISE NOTED.
⊠	EMERGENCY LIGHTING, MOUNTED AT 7'-6" A.F.F. UNLESS OTHERWISE NOTED.
⊠	DUPLEX RECEPTACLE, MOUNTED AT 8" ABOVE COUNTER UNLESS OTHERWISE NOTED.
⊠	DUPLEX RECEPTACLE, MOUNTED AT 18" O.C. A.F.F. UNLESS OTHERWISE NOTED.
⊠	QUADRUPLEX RECEPTACLES, MOUNTED AT 18" O.C. A.F.F. UNLESS OTHERWISE NOTED.
⊠	VOICE OUTLET, MOUNTED AT 18" O.C. A.F.F. WITH 3/4" CONDUIT TO ABOVE CEILING.
⊠	JUNCTION BOX
⊠	GFCI DUPLEX RECEPTACLE, MOUNTED AT 18" O.C. A.F.F. UNLESS OTHERWISE NOTED.
⊠	MOTION SENSOR SWITCH
⊠	COMBINATION DISCONNECT AND STARTER
⊠	EMERGENCY LIGHT
⊠	EXHAUST FAN
⊠	PANELBOARD
WP	WEATHERPROOF
ALL SYMBOLS NOT NECESSARILY REFERENCED ON PLAN	

LIGHT FIXTURE SCHEDULE:

- A POLE MOUNTED LED FLOODLIGHT LSI #PFL LED 22W WF UE 400 BRZ PFLSF FOR MOUNTING ON A 24 FT POLE. PROVIDE THE FIXTURE WITH A PHOTOCELL FOR CONTROL, 4000K
- B LSI FIXTURE # PFL LED 22W WF UE 400 BRZ FOR MOUNTING ON THE FACIA OF THE SHED
- C LED ENCLOSED AND GASKETED WITH ANGLED LENS, LSI #EG3 8 S LED HO 40 UNV



- PLAN NOTES:**
1. EXTEND 20A-1P CIRCUIT TO EXIST. PANEL. MOUNT A TIME CLOCK NEXT TO THE PANEL AND RUN THE CIRCUIT THRU THE TIME CLOCK.
 2. WEATHERPROOF SWITCH MOUNTED ON POLE OF SHED TO CONTROL TYPE 'C' LIGHT FIXTURES.
 3. INSTALL A PHOTOCELL ON THE ROOF OF THE SHED TO CONTROL THE FLOODLIGHTS INSTALLED ON THE SHED
 4. GFCI RECEPTACLE MOUNTED AT 48" ON SHED POST FOR TRUCK HEATER, 20A-1P EACH ON SEPARATE CIRCUIT.
 5. MOUNT A GFCI RECEPTACLE ON THE METAL RAIL AT THE TRUCK PARKING. MOUNT ON REAR OF RAILING. EACH TRUCK HEATER IS 20A-1P AND SHALL BE ON A SEPARATE CIRCUIT.

ELECTRICAL PLAN

SCALE: 1" = 30'-0"

COMMERCE AND INDUSTRIAL PARK SECOND ADDITION

WICHITA, SEDGWICK COUNTY, KANSAS State of Kansas, County of Sedgwick, SS.

I, Kenneth O. Taylor, Civil Engineer in said State and County, do hereby certify that I have surveyed and platted "COMMERCE AND INDUSTRIAL PARK SECOND ADDITION", Wichita, Sedgwick County, Kansas, and that the accompanying plat is A REPLAT OF and a true and correct exhibit of said survey described as follows: Lot 1, Commerce and Industrial Park, Wichita, Sedgwick County, Kansas, except that part of said Lot 1 described as follows: Beginning at the NW corner of said Lot 1; thence N89°23'20"E on the north line of said Lot 1, 449.65 feet to a point 500 feet west of the NE corner of said Lot 1; thence S00°25'40"E parallel to the east line of said Lot 1, 380.5 feet; thence S89°23'20"W, 45.34 feet to a curve; thence north-westerly, westerly and south-westerly on a curve to the left having a radius of 65 feet and a deflection angle of 152°16'16", a distance of 172.75 feet (the tangents of said curve being described as: Beginning at the west end of the last course, i.e., S89°23'20"W, 45.34 feet to a curve; first tangent, thence N33°11'24"W, 263.35 feet to the point of intersection of the tangent lines; second tangent, thence S5°27'40"E, 263.35 feet to a point on said curve); thence S65°12'20"W, 326.03 feet to the west line of said Lot 1; thence northerly on the west line of said Lot 1, 554.94 feet to the point of beginning.

Kenneth O. Taylor, Civil Engineer
Kenneth O. Taylor



Know all men by these presents that Aetna Cartage Company, an Ohio corporation, by John E. Shore, Vice-President, has caused the land described in the Civil Engineer's certificate to be platted into lots, a block, a street and a drainage right of way to be known as "COMMERCE AND INDUSTRIAL PARK SECOND ADDITION", Wichita, Sedgwick County, Kansas.

All abutter's rights of access to or from West Street, over and across the east line of Lot 1, Block 1, are hereby granted to the City of Wichita, provided, however, that Lot 1, Block 1, shall have access to West Street at two locations to be designated by the City Engineer of the City of Wichita, Kansas. All abutter's rights of access to or from West Street, over and across the east lines of Lots 2 and 8, Block 1, are hereby granted to the City of Wichita.

Drainage easements and access and maintenance easements as indicated on the plat are hereby granted to the City of Wichita. Utility easements as indicated on the plat are hereby granted for the construction and maintenance of all public utilities. The drainage right of way as indicated on the plat is hereby dedicated to the public for drainage purposes. The street is hereby dedicated to and for the use of the public.

Aetna Cartage Company, an Ohio corporation

ATTEST: John E. Shore, Vice-President
John E. Shore

Milton H. Harty, Secretary
Milton H. Harty

State of Ohio, County of Hamilton, SS.

Be it remembered, that on this 13th day of December, 1973, before me the undersigned, a notary public in and for the County and State aforesaid, came John E. Shore, Vice-President of Aetna Cartage Company, an Ohio corporation, to me personally known to be the same person who executed the within instrument as Vice-President of said corporation, and such person duly acknowledged the execution of same as Vice-President, for and on behalf of, and as the act and deed of said corporation. In testimony whereof, I have hereunto set my hand and affixed my official seal the day and year above written.

Barbara White, Notary Public
BARBARA WHITE

My Commission expires: December 17, 1977

The Equitable Life Assurance Society of the United States, a New York corporation, by T.V. Fitzgerald, Vice President, mortgagee of the north 400 feet of the east 500 feet of Lot 1, Commerce and Industrial Park, Wichita, Sedgwick County, Kansas, does hereby consent to the platting of "COMMERCE AND INDUSTRIAL PARK SECOND ADDITION", Wichita, Sedgwick County, Kansas.

The Equitable Life Assurance Society of the United States, a New York corporation

ATTEST: T.V. Fitzgerald, Vice President
T.V. Fitzgerald

Dorothy M. DeLay, Assistant Secretary
Dorothy M. DeLay

State of New York
County of New York) SS.

Be it remembered, that on this 8th day of April, 1974, before me the undersigned, a notary public in and for the County and State aforesaid, came T.V. Fitzgerald, Vice President of The Equitable Life Assurance Society of the United States, a New York corporation, to me personally known to be the same person who executed the within instrument as Vice President of said corporation, and such person duly acknowledged the execution of same as Vice President, for and on behalf of, and as the act and deed of said corporation. In testimony whereof, I have hereunto set my hand and affixed my official seal the day and year above written.

Ann M. O'Keefe, Notary Public
Ann M. O'Keefe

My Commission expires: March 30, 1976

This plat of "COMMERCE AND INDUSTRIAL PARK SECOND ADDITION", Wichita, Sedgwick County, Kansas, has been submitted to and approved by the Wichita-Sedgwick County Metropolitan Area Planning Commission, Wichita, Kansas.

Dated this 25th day of OCTOBER, 1974.

Wichita-Sedgwick County Metropolitan Area Planning Commission

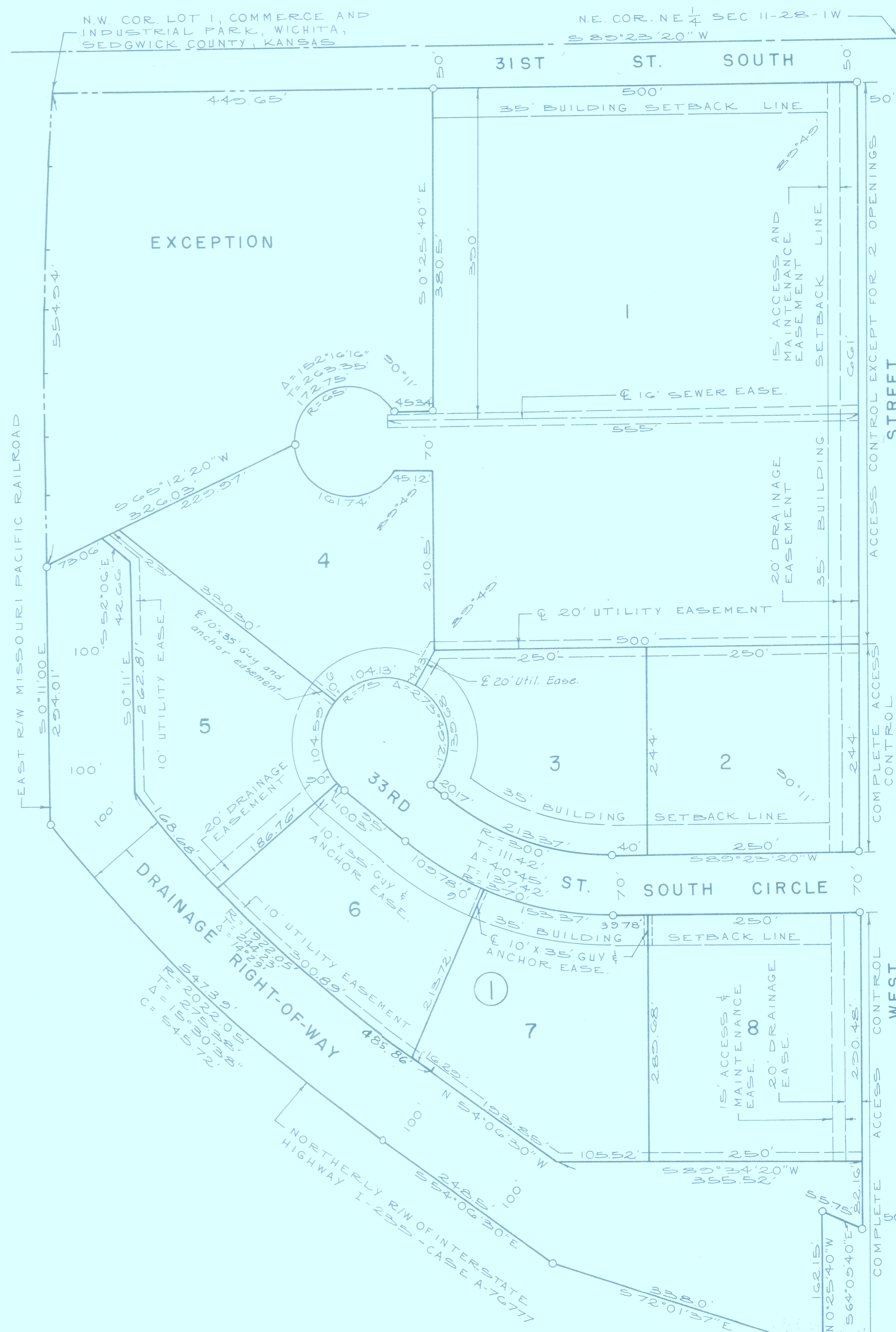
By: Marjorie L. Taylor, Chairman
Marjorie L. Taylor

Robert A. Lakin, Secretary
Robert A. Lakin

This plat approved and all dedications shown hereon accepted by the Board of City Commissioners of the City of Wichita, Kansas, this 28th day of May, 1974.

Garry L. Porter, Mayor
Garry L. Porter

Ralph C. Eberly, City Clerk
Ralph C. Eberly



This plat approved and all dedications shown hereon accepted by the Board of County Commissioners of Sedgwick County, Kansas, this 10th day of June, 1974.

Tom Scott, Chairman
Elmer S. Peters, Commissioner
Earl E. Rush, Commissioner

ATTEST: Marie Warden, County Clerk
Marie Warden

Entered on transfer record this 10 day of June, 1974.
Marie Warden, County Clerk
Marie Warden

State of Kansas, County of Sedgwick, SS.
This is to certify that this instrument was filed for record in the Register of Deeds Office, at 7:00 o'clock A.M., on the 10th day of June, 1974.
John Hale, Register of Deeds
Pearl B. Gilbert, Deputy



1"=100'
0=IRON

19596