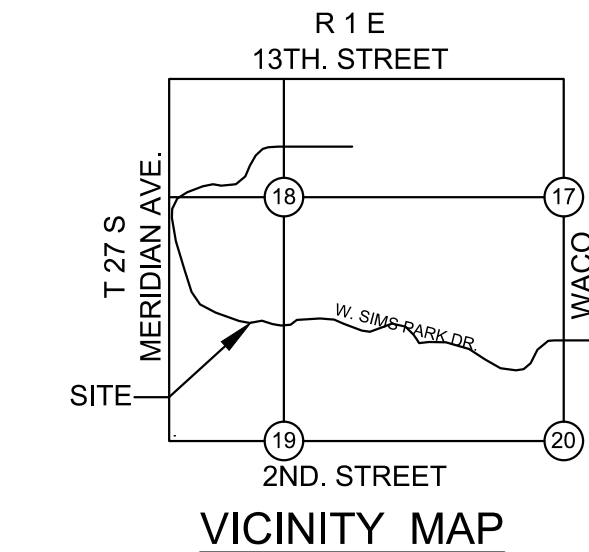
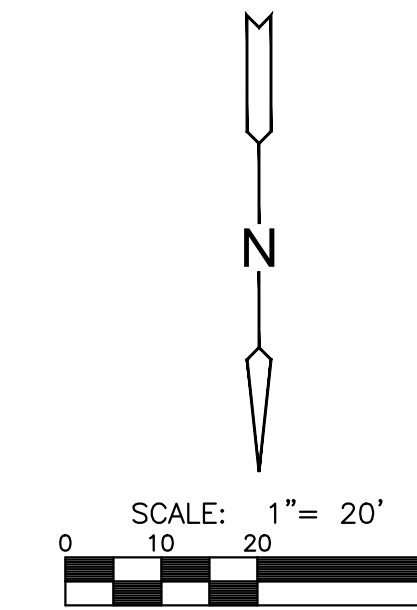


BOTANICA CAROUSEL

Wichita, Kansas
701 AMIDON ST.

THE CITY OF WICHITA, KANSAS
GARY JANZEN, P.E. - CITY ENGINEER
PROJECT NO.
2102 PPW (183021)

WATER VALVE IS LOCATED 12'-0" SOUTH FROM CENTER LINE OF W. SIM PARK DRIVE.



INDEX TO DRAWINGS

- 1&1A PLAN & PROFILE
- 2 WATER DETAIL
- 3 SITE & DETAILS
- 4-8 BMP's

CONTROL POINTS

PT. NO.	NORTH	EAST	ELEV.	DESCRIPTION
11	1688823.840	1640768.840	1301.340	5/8" REBAR W/ RED MKEC CONTROL PT. ID CAP
12	1688902.100	1640413.290	1302.200	5/8" REBAR W/ RED MKEC CONTROL PT. ID CAP
14	1640923.690	1300.570	5/8" REBAR W/ RED MKEC CONTROL PT. ID CAP	
52	1689193.147	1640834.493	1301.979	5/8" REBAR W/ RED MKEC CONTROL PT. ID CAP
53	1689231.088	1640315.819	1302.009	5/8" REBAR W/ RED MKEC CONTROL PT. ID CAP

BENCHMARK

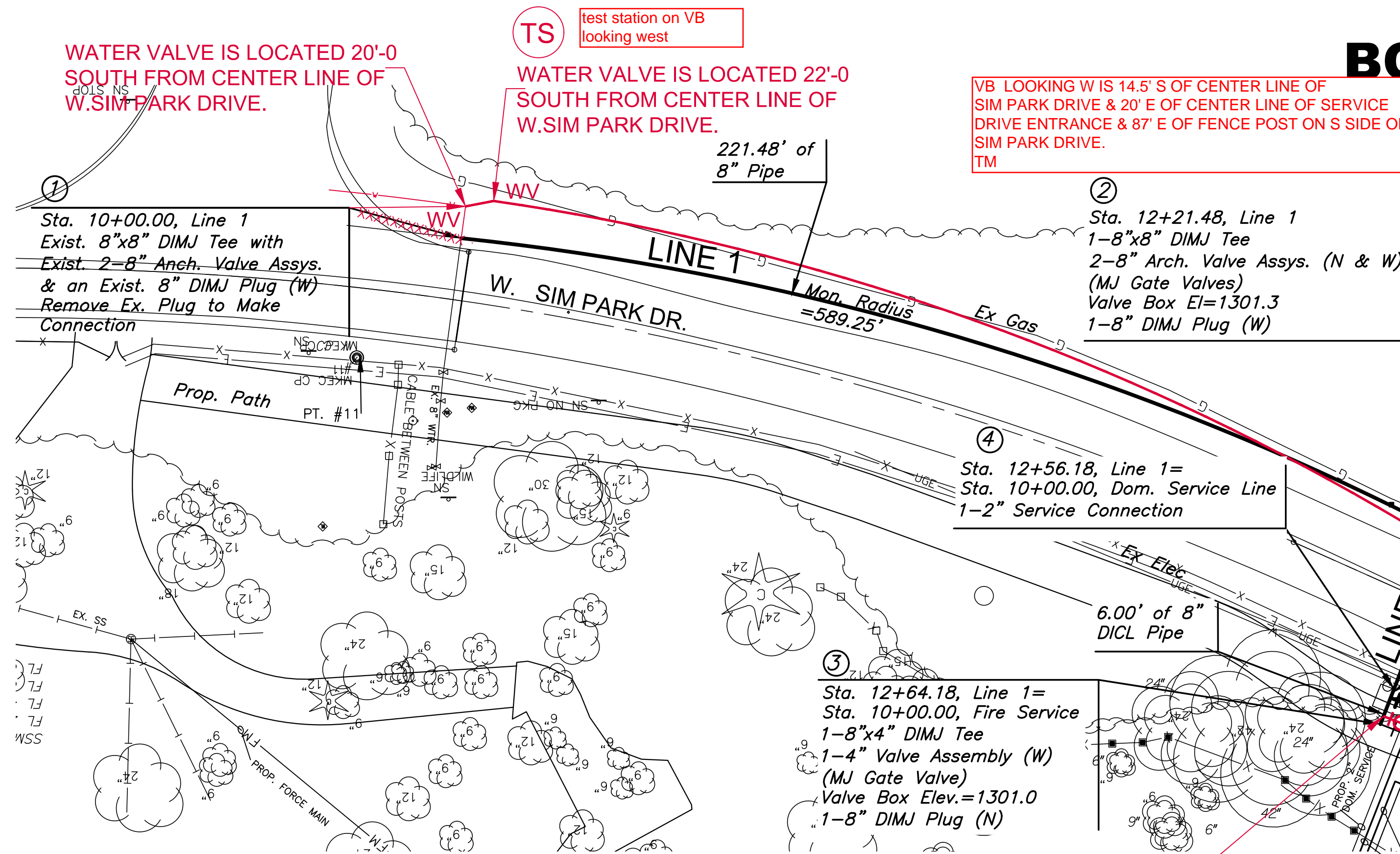
BM #51
CHISELED SQUARE ON SOUTHWEST CORNER OF CONCRETE VAULT IN ISLAND AT INTERSECTION OF SIM PARK DRIVE AND AMIDON, 9' NORTH OF THE BACK OF THE NORTH CURB OF SIM PARK DRIVE, 64' EAST OF THE WEST END OF THE ISLAND AND 24' WNW OF A LIGHT POLE.
ELEV. = 1302.17

DATUM CONTROL NOTE

- THE PROJECT HORIZONTAL DATUM IS BASED ON THE NAD83, KANSAS STATE PLANE COORDINATE SYSTEM, SOUTH ZONE, (US SURVEY FEET DEFINITION), WITH A COMBINED ADJUSTMENT FACTOR (CAF) OF 1.000120014. ALL COORDINATE AND DIMENSIONS SHOWN ON THESE PLANS ARE MODIFIED TO GROUND VALUES.
- THE VERTICAL DATUM USED IS NAVD88.

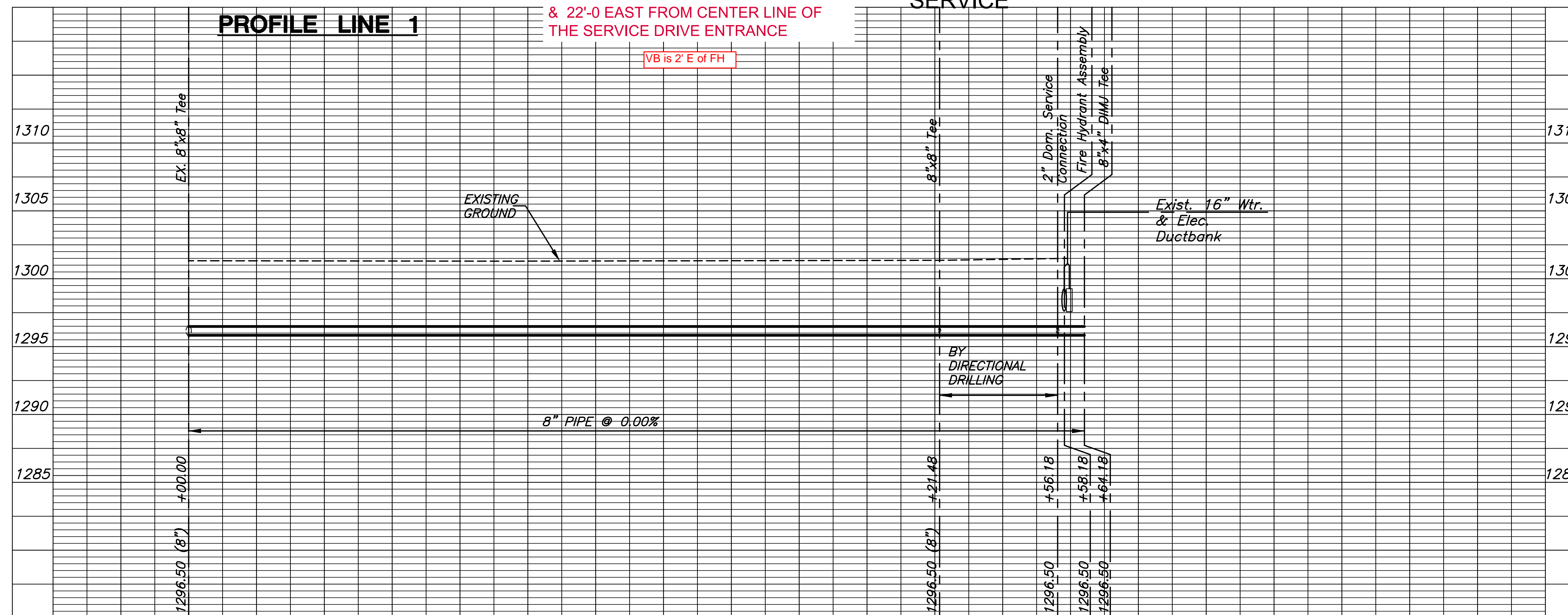
FIXTURE POINTS

PT. NO.	STA.	FIXTURE POINTS	NORTH	EAST
1	10+00.00	TAPPING SLEEVE	1688825.7402	1640820.1774
2	12+21.48	90° BEND	1688861.9370	1640535.8147
3	12+64.18	8"x4" DIMJ TEE	1688901.7774	1640551.1809
4	12+56.18	2" SERVICE CONNECTION	1688894.3187	1640548.3041
5	12+58.18	FIRE HYDRANT	1688896.1793	1640549.0218



PLAN LINE 1

PROFILE LINE 1



NOTE: CONTRACTOR TO VERIFY LOCATION AND ELEVATION OF EXISTING WATER LINE PRIOR TO CONSTRUCTION.

NOTE: WATER LINE VALVES TO BE OPERATED BY CONTRACTOR ONLY IF WATER INSPECTOR IS ON SITE.

TS HYDRANT IS LOCATED 26'-0" NORTH FROM CENTER LINE OF W. SIM PARK DR & 22'-0" EAST FROM CENTER LINE OF THE SERVICE DRIVE ENTRANCE

VB IS 2' E OF FH

AS-BUILT PLANS - AUGUST 2019

INSPECTED BY: JEFF THERRELL SR., MKEC ENGINEERING INC
CONSTRUCTED BY: WILKS CONSTRUCTION
SUPERINTENDENT: CHAD WILKS

APPROVED AS NOTED BY WICHITA PUBLIC WORKS ENGINEERING DIVISION & BY WICHITA FIRE DEPARTMENT

Engineering: *Johanna Kellman 6-7-19*
Utilities: *Angela 6-7-19*
Fire Department: *John 6-10-19*

NOTE TO CONTRACTORS

WATER LINE 1

PROJECT NO. 1601020709
DATE OCTOBER 2018
SCALE AS NOTED
DESIGNED JTC DRAWN DM CHECKED SPE

Inspection and testing for the water line is to be provided by a Licensed Consulting Engineering Firm under contract with the Owner/Developer. Said inspection to be in accordance with the City of Wichita standard construction engineering practices and certified by a Professional Engineer Licensed in the state of Kansas. No work shall be performed in dedicated easements or public rights-of-way by the Contractor without such inspection nor shall any work be commenced without written authorization by the City Engineer. All Construction and Materials shall comply with the City of Wichita Specifications and Standards and Special Provision (on file and available in the City Engineer's office) or on the City's Website.

Private Property: Installation and testing for the fire protection line is to be performed by a City of Wichita licensed fire protection contractor in accordance with the fire codes as adopted by the City of Wichita. All material and construction practices for the fire protection line shall comply with the fire codes as adopted by the City of Wichita (available from the City of Wichita Fire Department). The contractor shall not commence work without notification and approval of the Wichita Fire Department. Inspection of the fire protection line is to be provided by a licensed Engineering Firm under contract with the Owner/Developer and the Fire Department. The contractor shall not start work until the project inspector is assigned to the project and present on the site. Any work done without inspection will be required to be uncovered for inspection.

An approved copy of these plans signed by City staff is required on-site.

NOTE: ALL LINES TO BE INSTALLED BY OTHERS ARE SUBJECT TO CITY REVIEW.

NOTE: CONTRACTOR TO VERIFY DEPTH AND LOCATION OF EXISTING UTILITIES PRIOR TO CONSTRUCTION.



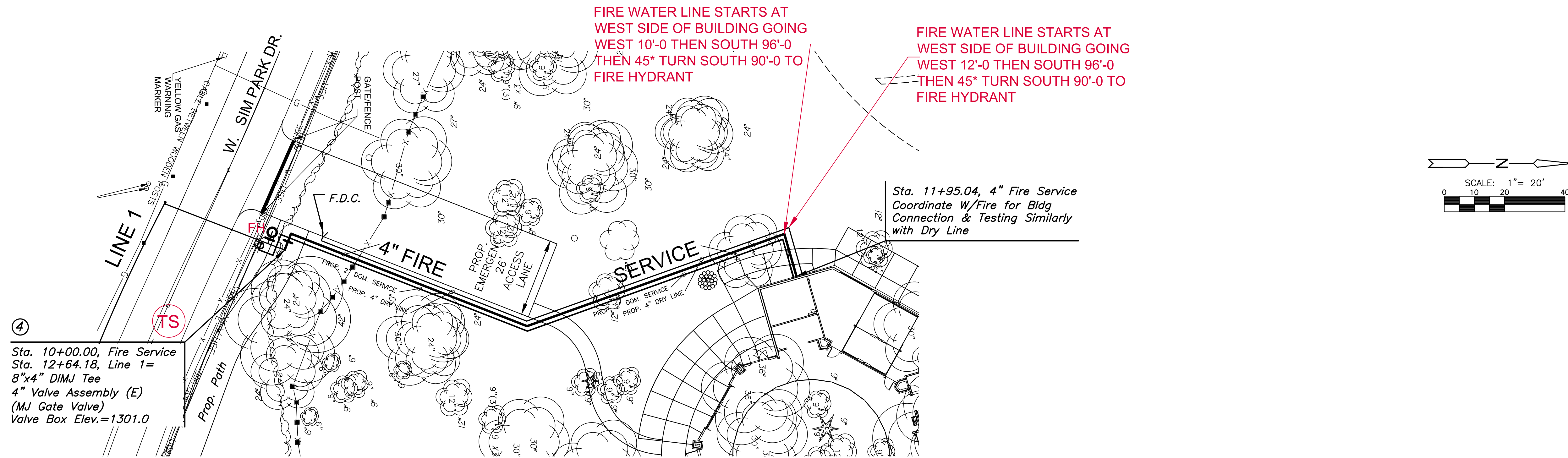
WATER DISTRIBUTION PLANS FOR
BOTANICA CAROUSEL
701 AMIDON ST.

©2019 MKEC Engineering
All Rights Reserved
www.mkec.com
These drawings and their contents, including, but not limited to, all concepts, designs, & ideas are the exclusive property of MKEC Engineering (MKEC), and may not be used or reproduced in any way without the express consent of MKEC.

NO.	REVISION	DATE

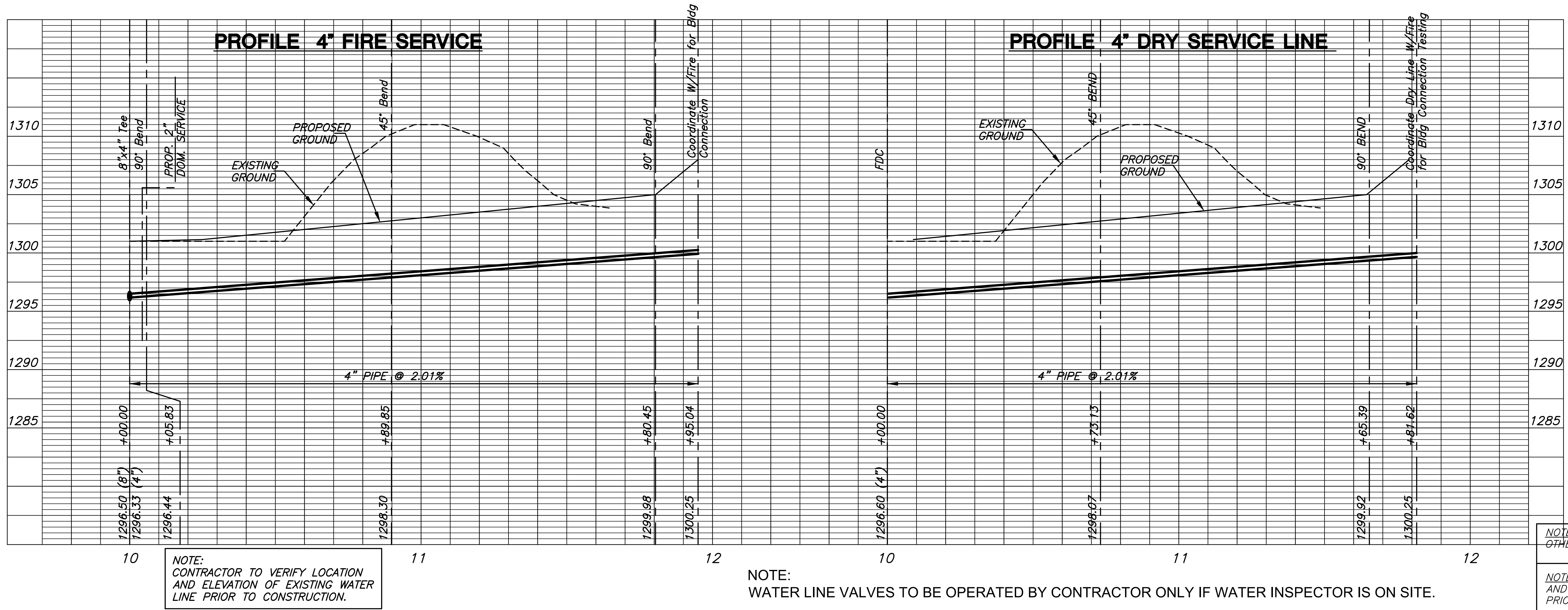
SHEET NO. 01 OF 08

J:\PROJECTS\2018\1601020709_WDM_BOTANICA_CAROUSEL_180709_CAD\SHOTS\505_CIVIL\WFR16709_C1.DWG



PLAN DOMESTIC & FIRE SERVICE & DRY SERVICE LINES

AS-BUILT PLANS - AUGUST 2019



©2019 MKEC Engineering All Rights Reserved www.mkec.com
These drawings and their contents, including, but not limited to, all concepts, designs, & ideas are the exclusive property of MKEC Engineering (MKEC), and may not be used or reproduced in any way without the express consent of MKEC.

FIRE SERVICE LINES

PROJECT NO.	1601020709
DATE	OCTOBER 2018
SCALE	---
DESIGNED	ABC
DRAWN	ABC
CHECKED	ABC

NO.	REVISION	DATE

J:\PROJECTS\2018\1601020709_WDM_BOTANICA_CAROUSEL_160709_CADD\SHOTS\55_CIVIL\WFR16709_C-1A.DWG