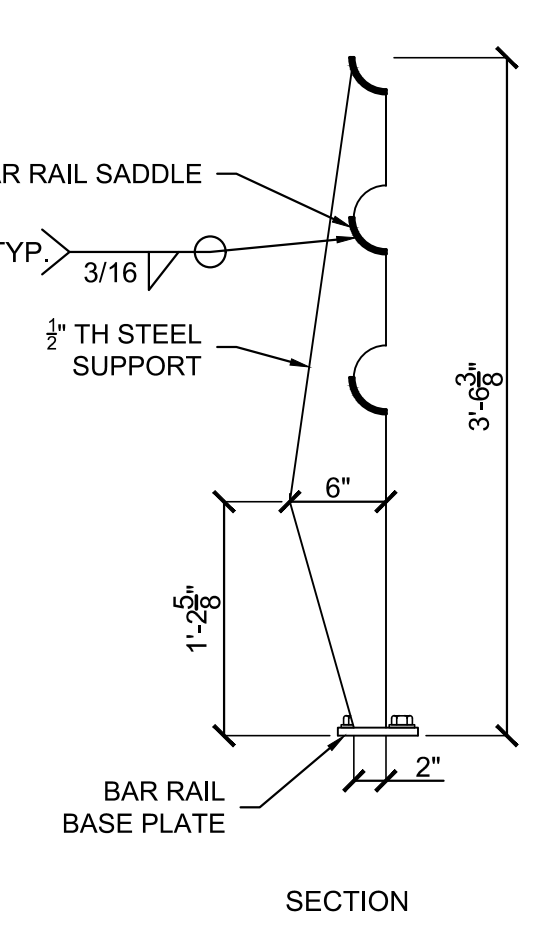
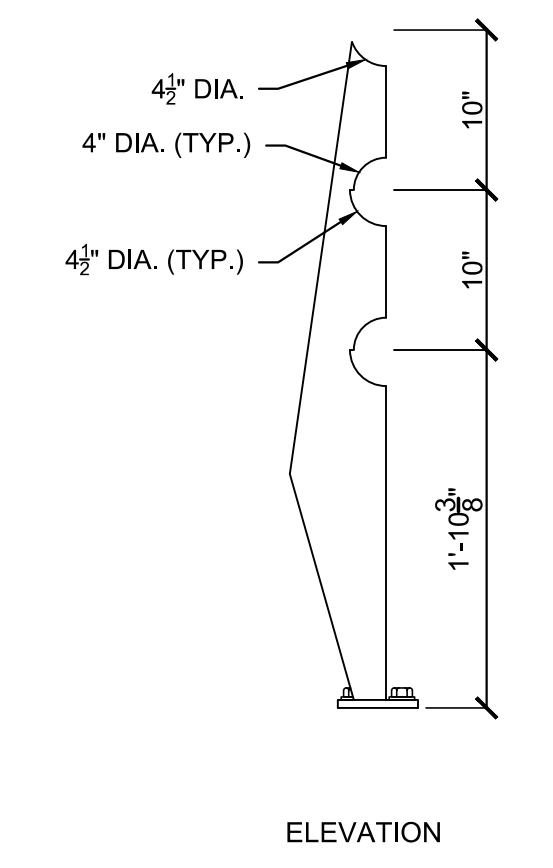
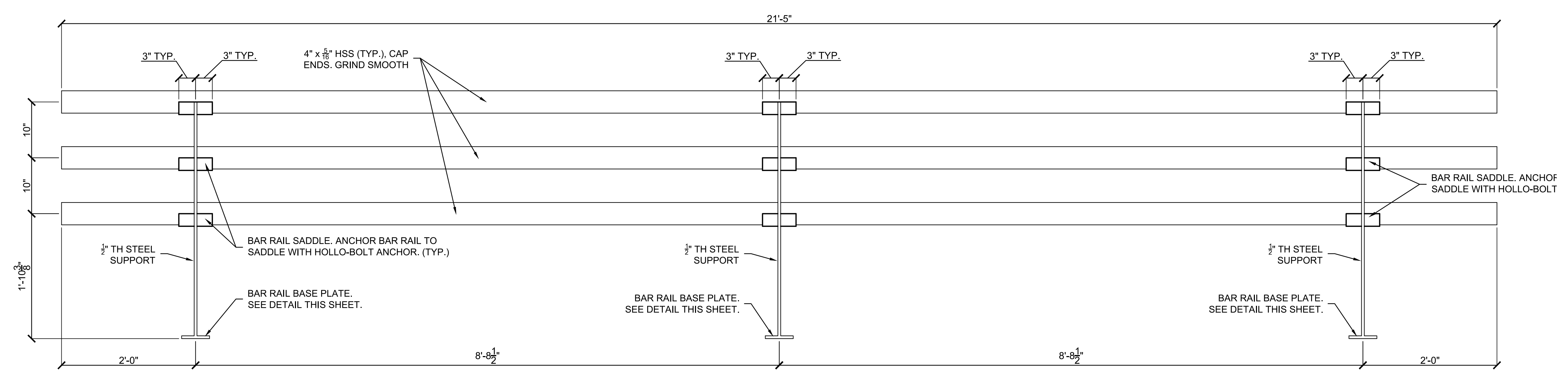


1 BAR RAIL COLOR PATTERN - STREET SIDE ELEVATION
SCALE: 1"=1'

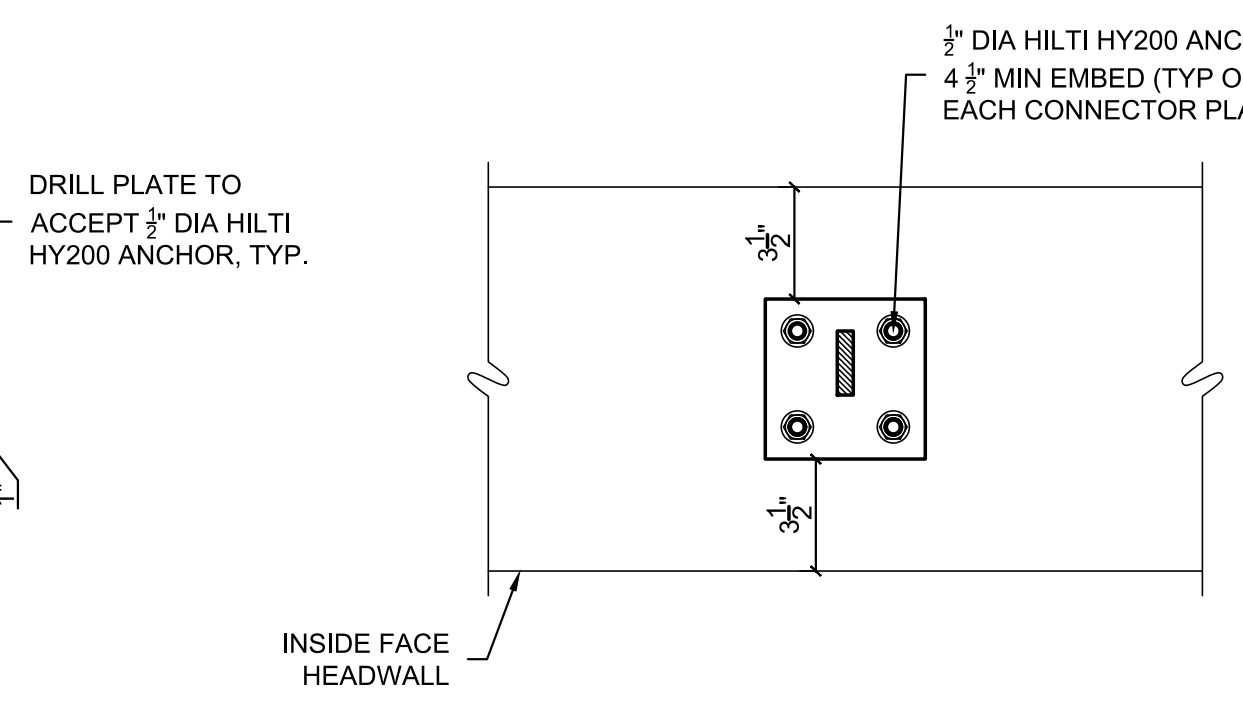
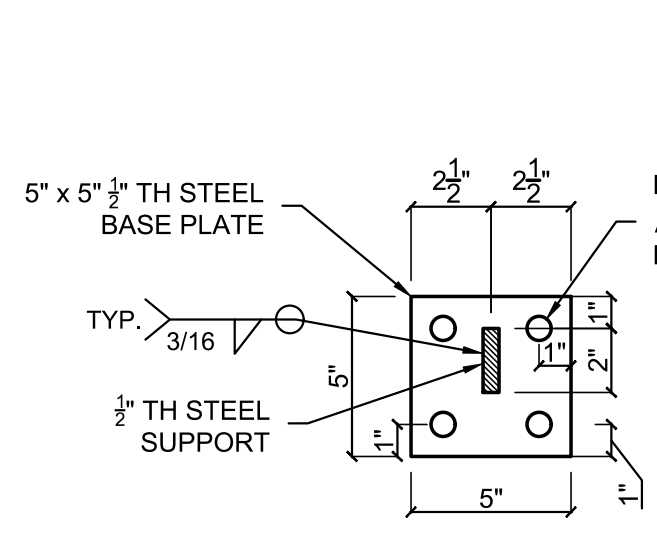
- PAINT COLORS - ALL SHERWIN WILLIAMS**
- ① SW 6635 DETERMINED ORANGE
 - ② SW 9050 VINTAGE VESSEL
 - ③ SW 6230 RAINSTORM
 - ④ SW 6395 ALCHEMY



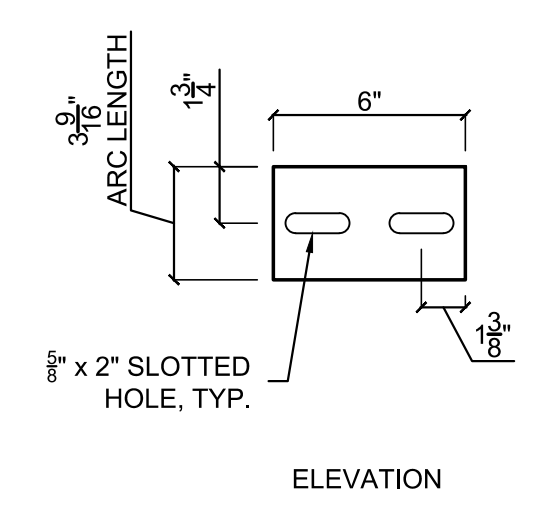
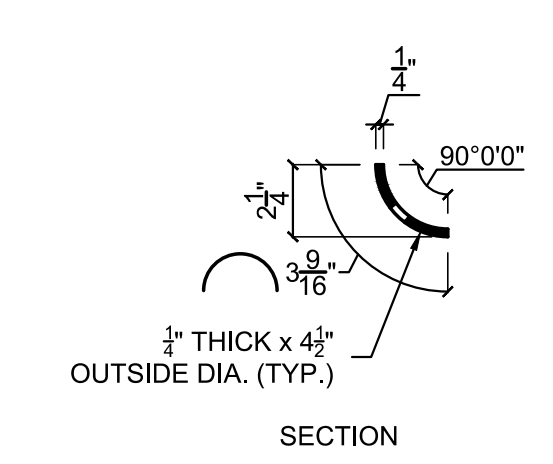
2 STEEL SUPPORT ASSEMBLY
SCALE: 1"=1'



3 BAR RAIL ELEVATION
SCALE: 1"=1'



4 BAR RAIL BASE PLATE
SCALE: NOT TO SCALE



5 BAR RAIL SADDLE
SCALE: NOT TO SCALE

BAR RAIL NOTES

- CONTRACTOR TO SUBMIT SHOP DRAWINGS FOR APPROVAL PRIOR TO FABRICATION.
- THE RAIL MEMBERS SHALL CONFORM TO ASTM DESIGNATION A36 OR EQUIVALENT.
- POSTS SHALL BE SET VERTICAL. SHIMS MAY BE USED BETWEEN CONCRETE AND BASE PLATES OF POSTS.
- ALL PARTS OF BAR RAIL SHALL BE PAINTED. THE PRIMER COAT SHALL CONFORM TO THE INORGANIC ZINC SYSTEM. SURFACE PREPARATION SHALL BE IN ACCORDANCE WITH THAT FOR STRUCTURAL STEEL. THE FINISH COAT SHALL BE IN ACCORDANCE WITH WATER-BORNE ACRYLIC FINISH COAT.
- THE CONTRACTOR SHALL SUBMIT COLOR CHART FOR APPROVAL BY LANDSCAPE ARCHITECT. THE COLOR FOR SUPPORT RAIL ASSEMBLY SHALL BE "UCHS CHAMPAGNE SATIN SMOOTH" BY URBAN LINE OR A SHERWIN WILLIAMS EQUAL (APPROVED BY LANDSCAPE ARCHITECT).
- ALL MATERIALS, EQUIPMENT AND LABOR NECESSARY FOR THE INSTALLATION OF THE BAR RAIL SHALL BE SUBSIDIARY TO THE BID ITEM.
- A SAMPLE MOCK-UP SECTION IS REQUIRED PRIOR TO FINAL PRODUCT.

©2019 MKEC Engineering All Rights Reserved www.mkec.com
These drawings and their contents, including, but not limited to, all concepts, designs, & ideas are the exclusive property of MKEC Engineering (MKEC), and may not be used or reproduced in any way without the express consent of MKEC.

BAR RAIL DETAILS

PROJECT NO.	472-85452	
DATE	AUGUST 2019	
SCALE	AS SHOWN	
DESIGNED	DML	
DRAWN	DML	
CHECKED	RR	
NO.	REVISION	DATE