

SANITARY SEWER EXTENSION

to serve

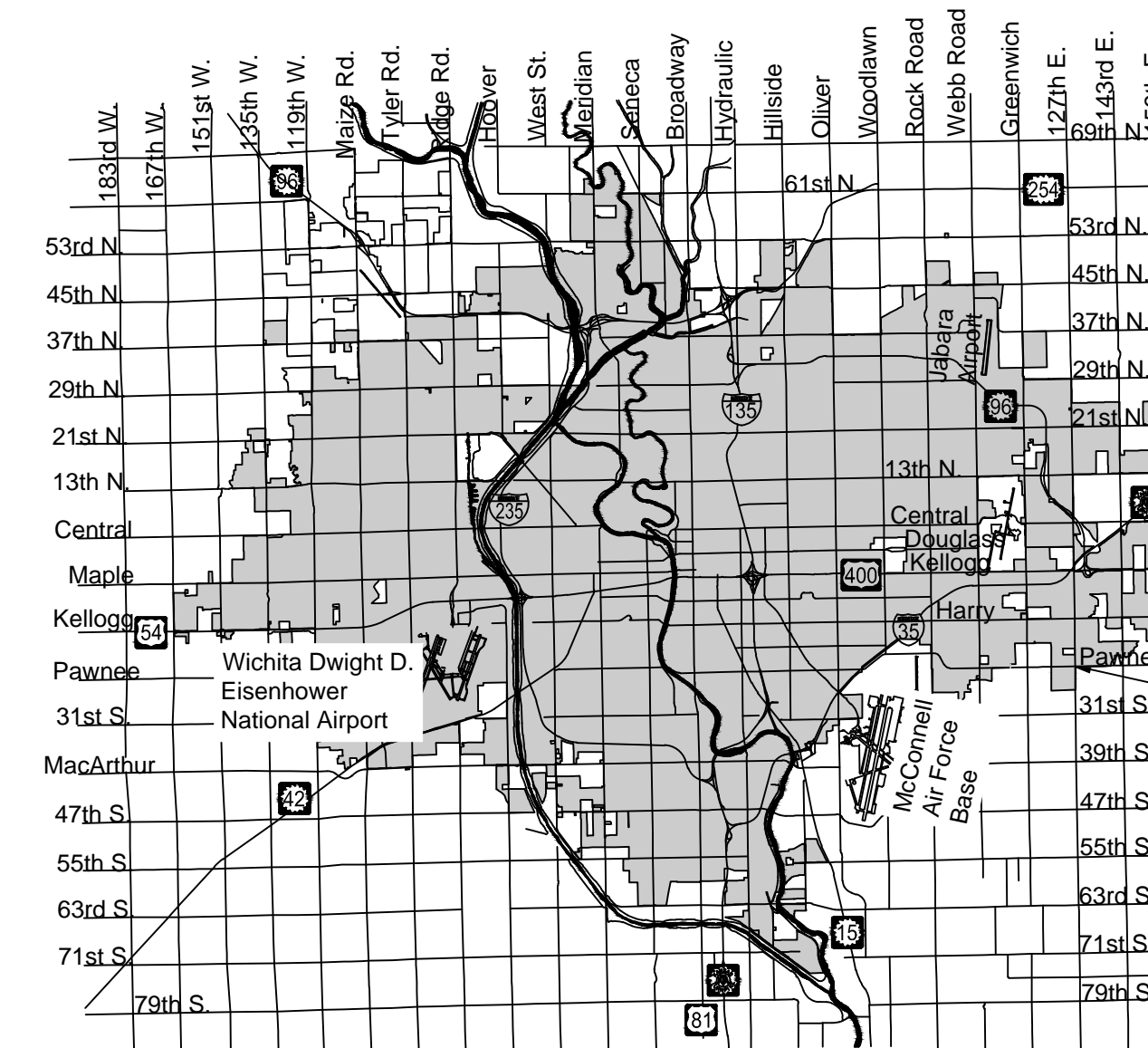
Casa Bella Phase 6 CITY OF WICHITA, KANSAS

Gary Janzen, P.E. City Engineer

Project Number 468-85393

O.C.A. NO. 744494

Mies Construction - Contractor
K. Yale - City of Wichita, Field Project Engineer
E. Flores - City of Wichita, Inspector
As-Built
Risers
Release Date: 9/20/2019 (For connection purposes only)
Completion Date: 10/18/2019
pdf: 9/20/2019 apr



PROJECT LOCATION

GENERAL NOTES:

- The Contractor shall comply with all applicable safety regulations. All construction shall be completed following current City Standard Specifications and Special Provisions.
- Contractor will be required to provide notice to utility companies a minimum of seventy-two (72) hours prior to any excavation, as follows:

Kansas One-Call 687-2470

The Contractor must notify the following in case of an emergency:

AT&T 1-800-246-8464
Black Hills Energy 1-800-694-8989
Butler Rural Electric 1-316-321-9600
City of Wichita Water & Sewer Dept. 1-316-219-8921
City of Wichita Stormwater 1-316-268-4090
City of Wichita Traffic 1-316-268-4034
Cox Communications 1-888-249-3530
Kansas Gas Service 1-888-482-4950
Phillips 66 1-918-977-7816
- Utility service lines, poles, etc. are to be adjusted as necessary by others prior to construction unless the plans specifically call for their adjustment by the Contractor or unless the plans specifically identify a utility to be adjusted by its owner during construction. Existing utilities and their location, as shown on the plans, represent the best information obtainable for design. The Contractor will be required to work around existing utilities within the right-of-way which do not conflict with proposed construction.
- Rubble from the removal of miscellaneous structures and excess excavation which is to be wasted shall be disposed of on sites to be provided by the Contractor. These sites shall be approved by the Engineer as to suitability, appearance and site location. Locations, in the opinion of the Engineer, that will leave an unsightly appearance will not be approved. All disposal sites must be approved by the Kansas Department of Health and Environment. Material either stockpiled or disposed of in a flood plain will require a Kansas State Board of Agriculture permit. Any material dumped in waters of the United States or wetlands is subject to U.S. Corps. of Engineers permitting regulations. Any material buried or stockpiled beyond approved construction limits will require additional archaeological investigations unless buried in a previously approved borrow location.
- Trees and shrubs in public right-of-way which are in direct conflict with proposed new construction shall be removed by the Contractor with the Engineer's approval. Trees and shrubs which are not in direct conflict with proposed new construction shall be saved and protected from damage.
- The Contractor shall give all property owners and/or tenants of developed property abutting the construction of this project a minimum of ten (10) days notice prior to start of construction.
- The Contractor shall be responsible for preserving property irons. The Contractor will be required to re-establish any property irons which are damaged or destroyed by his construction operations. Such irons shall be re-established by a licensed land surveyor in accordance with state laws.
- If traffic will be impacted by construction, a traffic control plan must be submitted and approved by the City Traffic Engineer, Brian Coon at traffic@wichita.gov before construction can begin. The Contractor shall be responsible for all traffic control measures to facilitate construction. All construction zone markings and signage shall conform to the latest version of the Manual on Uniform Traffic Control Devices (MUTCD) as published by the US Dept. of Transportation, Federal Highway Administration. All costs associated with construction markings and signage shall be the Contractors responsibly.
- All elevations shown are NAVD 88.
- All areas disturbed during construction that will not be under proposed pavement shall be restored to match existing conditions.

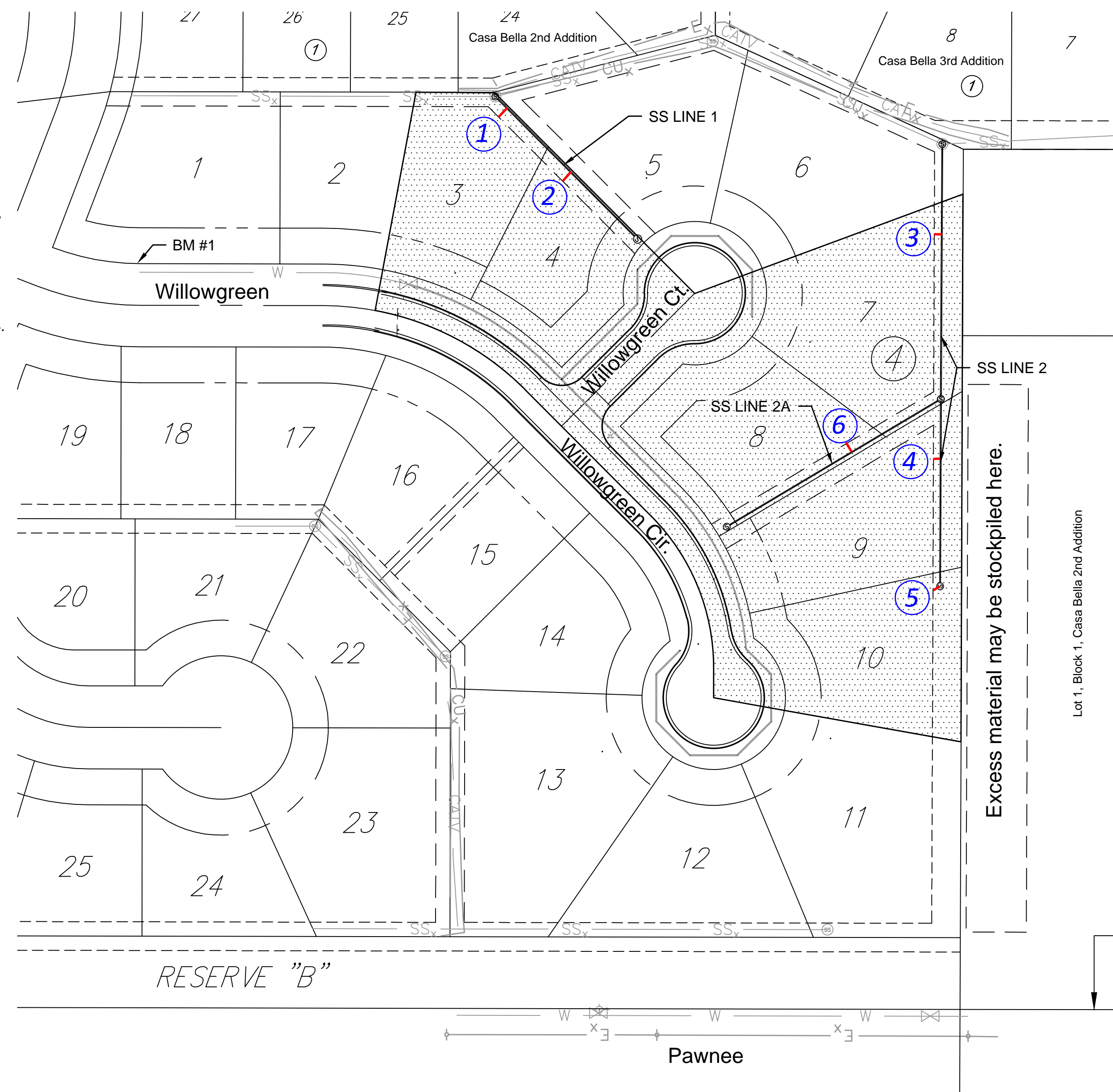
- The Contractor shall protect from damage and support existing utilities through constructions as approved by the utility owner and the Engineer at the contractors expense.
- Contractor shall limit the extent of trench openings overnight and weekends to less than 50 feet.
- Any sidewalk, drive approach, curb, or street pavement removed to construct project must have a pavement cut permit and be replaced by the City contractor. Permits can be obtained by calling 316-268-4501 or 316-268-4480.
- All stubs and plugged pipes shall be located with green plastic tape in the same manner as risers.
- Connecting to Existing Manholes:

Prior to laying sewer lines using existing stubs in existing manholes, the Contractor shall expose and verify the elevation, grade and alignment of existing stubs and notify the Engineer of any deviation from the plans. Where connection to an existing manhole that does not have an existing stub or the stub is unusable due to elevation grade or alignment, the Contractor shall bore cut into existing manhole wall to make connection using approved water stop gasket, and reshape the existing manhole invert to provide smooth flow. The cost to connecting to existing manholes is incidental to the project.
- Contractor shall provide positive drainage away from all manhole covers.
- The Contractor shall prevent any construction debris from entering the existing sanitary sewer during construction.
- The Contractor shall be responsible for maintaining continuous flow of sewage through construction. Contractors proposed method for maintaining sewage flow shall be submitted and approved by the Sewer Maintenance Division (316-268-4073) prior to starting and by-passing of sewage flows.
- Any over excavation from manhole and pipe removal shall be backfilled with AB-3 compacted to 90-95% ASTM D698.
- No shrink or swell factors have been applied to the earthwork quantities shown on this project. All earthwork quantities are based on raw surface volume comparisons.
- Excess dirt generated from installation of underground utilities is to remain on site and be stockpiled on the west 50' of Lot 1, Block 1 Casa Bella 2nd Addition. Contractor shall make sure stockpiles do not cause water to pond. Stockpiling of excess material shall be considered subsidiary to sanitary sewer pipe.

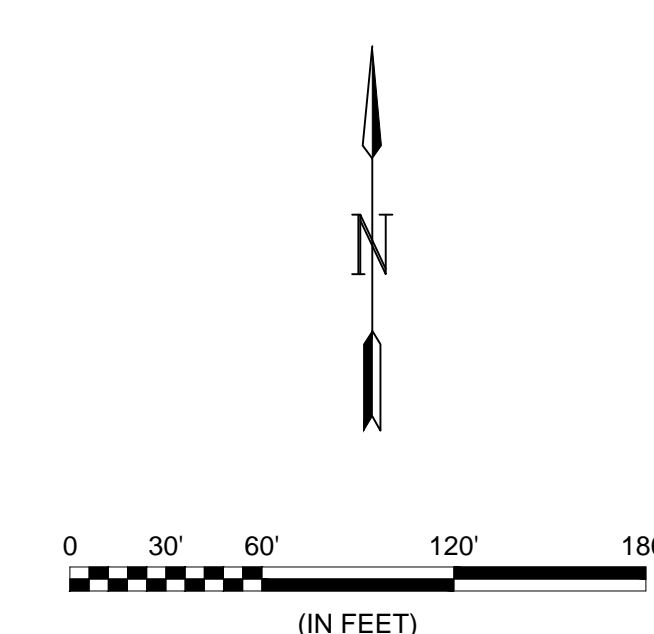
Benchmarks

POINT #1
SQUARE CUT ON TOP OF CURB OF DRIVEWAY FOR LOT 1, BLOCK 4, CASA BELLA ADDITION. APPROXIMATELY 100' EAST OF THE CENTER OF THE INTERSECTION OF CASA BELLA & WILLOWGREEN AND 30' NORTH OF THE CENTERLINE OF WILLOWGREEN.
ELEVATION = 1354.49 (NAVD88)

POINT #2
SRB BRASS DISC 55.45' E. & 5.13' S. OF THE N.W. COR., SW 1/4, SEC. 35, T27S, R2E
ELEVATION = 1348.83 (NAVD88)



Vicinity Map



Sheet List Table	
Sheet Number	Sheet Title
1	Title Sheet
2	Pre-Cast SS MH
3	MH Frame & Cover
4	Vertical Riser
5	SS Line 1
6	SS Line 2 & 2A
7	Erosion Control SS
8	BOC
9	Silt Fc
10	Straw Bale
11	SIP
12	SDP
13	SS Bubble Map
14	SS Plat

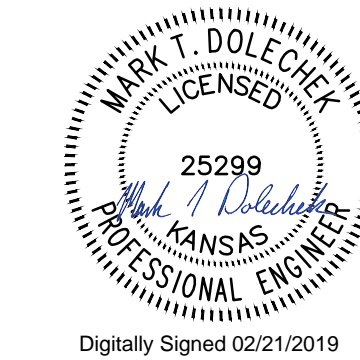
For Informational Purposes Only

Item	Quantity	Unit
8" Sanitary Sewer Line	623	LF
SS Manhole 4'	3	ea
SS Manhole 5'	1	ea

IMPROVEMENT DISTRICT

February 2019

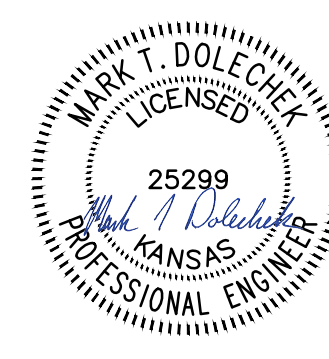
PLANS PREPARED BY



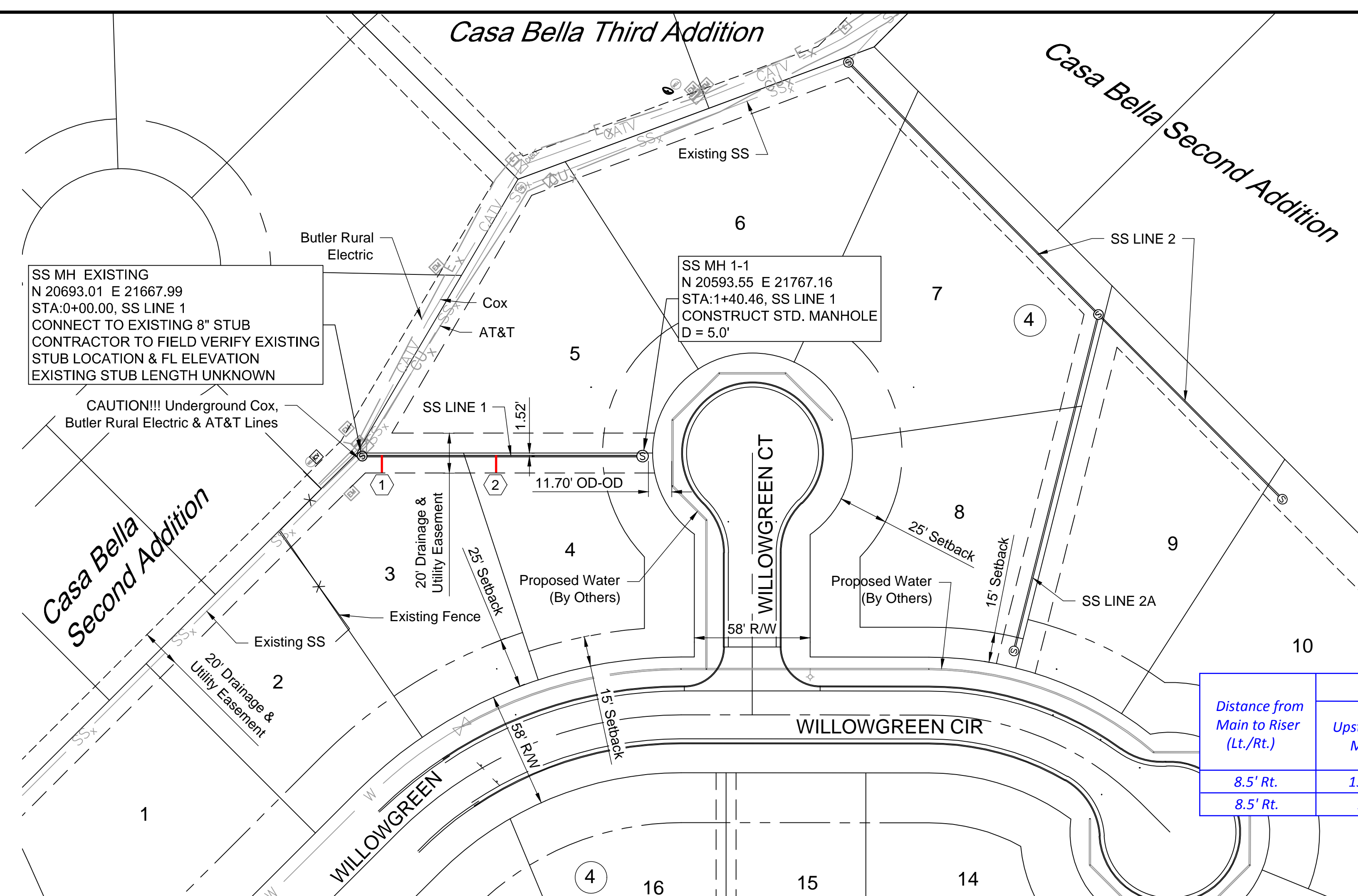
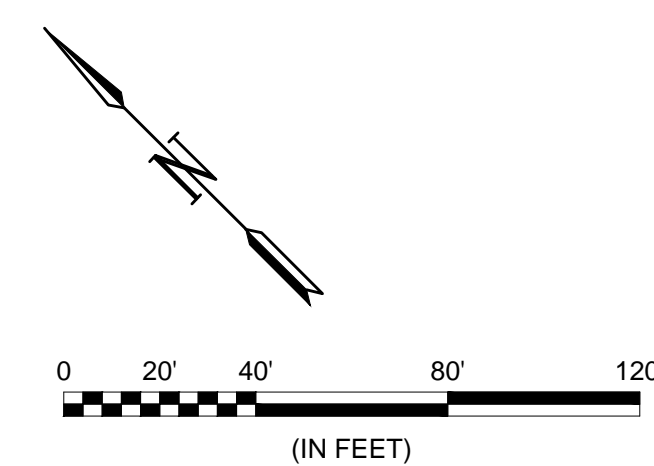
Digitally Signed 02/21/2019



© 2019 GARVER, LLC
 THIS DOCUMENT, ALONG WITH THE IDEAS AND DESIGNS CONVEYED HEREIN, SHALL BE CONSIDERED INSTRUMENTS OF PROFESSIONAL SERVICE AND ARE PROPERTY OF GARVER, LLC. ANY USE, REPRODUCTION, OR DISTRIBUTION OF THIS DOCUMENT, ALONG WITH THE IDEAS AND DESIGN CONTAINED HEREIN, IS PROHIBITED UNLESS AUTHORIZED IN WRITING BY GARVER, LLC OR EXPLICITLY ALLOWED IN THE GOVERNING PROFESSIONAL SERVICES AGREEMENT FOR THIS WORK.

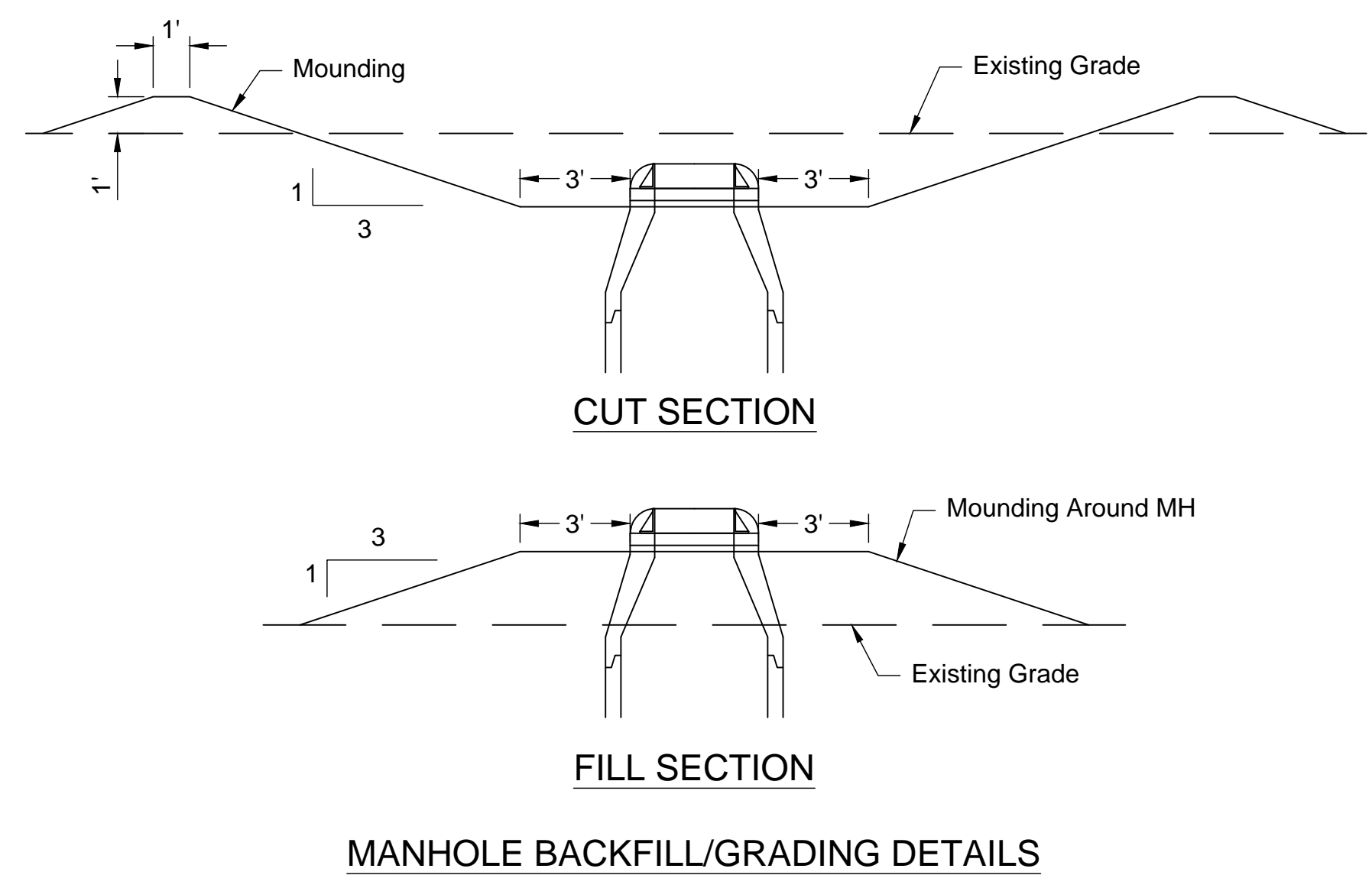
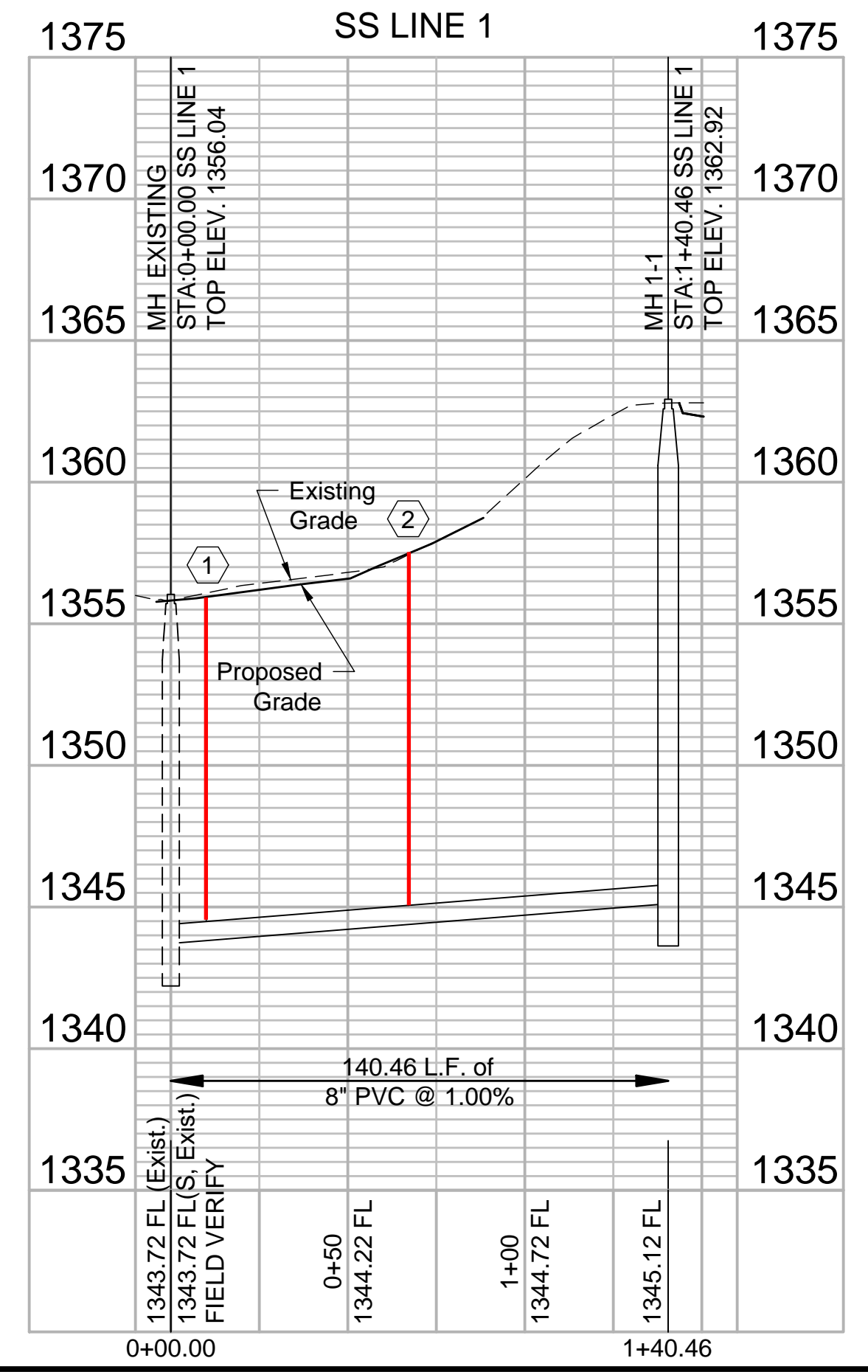


Digitally Signed 02/21/2019



- NOTES**
- Contractor to grade around manholes as shown on the detail on this sheet. Contractor shall ensure no ponding is caused by grading around manholes until easements can be graded by others. Grading subsidiary to manholes.

Distance from Main to Riser (Lt./Rt.)	Distance from		NUMBER	TYPE	SERVING			FOR INFORMATION ONLY		
	Upstream MH	Downstream MH			LOT NO.	BLOCK NO.	LINE NO.	STATION/DIRECTION	APPROX. LENGTH 4" PIPE	
									VERTICAL	HORIZONTAL
8.5' Rt.	130'	10'	1	8"X4" Tee	3	4	1	0+10 Right	10.0	8.5
8.5' Rt.	73'	67'	2	8"X4" Tee	4	4	1	0+67 Right	11.0	8.5



File: L:\2018\18267018 - Casa Bella Phase 6\Drawings\C3D\Sanitary Sewer\18267018 SS Line 1.dwg, Last Save: 2/20/2019 5:25 PM, Last saved by: MTDolechek
 Last plotted by: Dolechek, Mark T., Plot Date: 2/21/2019 1:23 PM, Plotter used: None

CITY OF WICHITA
 WICHITA, KANSAS

CASA BELLA, PHASE 6
 SANITARY SEWER

SS Line 1

JOB NO.: 18267018
 DATE: FEB 2019
 DESIGNED BY: MTD
 DRAWN BY: MTD

BAR IS ONE INCH ON ORIGINAL DRAWING
 IF NOT ONE INCH ON THIS SHEET, ADJUST SCALES ACCORDINGLY.

DRAWING NUMBER

SHEET NUMBER **5** OF **14**

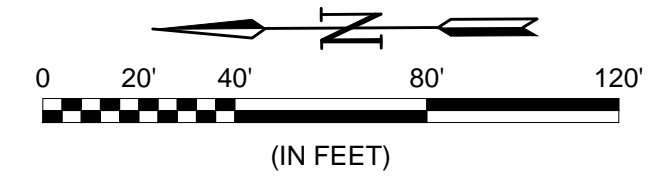


© 2019 GARVER, LLC
 THIS DOCUMENT, ALONG WITH THE IDEAS AND DESIGNS CONVEYED HEREIN, SHALL BE CONSIDERED INSTRUMENTS OF PROFESSIONAL SERVICE AND ARE PROPERTY OF GARVER, LLC. ANY USE, REPRODUCTION, OR DISTRIBUTION OF THIS DOCUMENT, ALONG WITH THE IDEAS AND DESIGN CONTAINED HEREIN, IS PROHIBITED UNLESS AUTHORIZED IN WRITING BY GARVER, LLC OR EXPLICITLY ALLOWED IN THE GOVERNING PROFESSIONAL SERVICES AGREEMENT FOR THIS WORK.

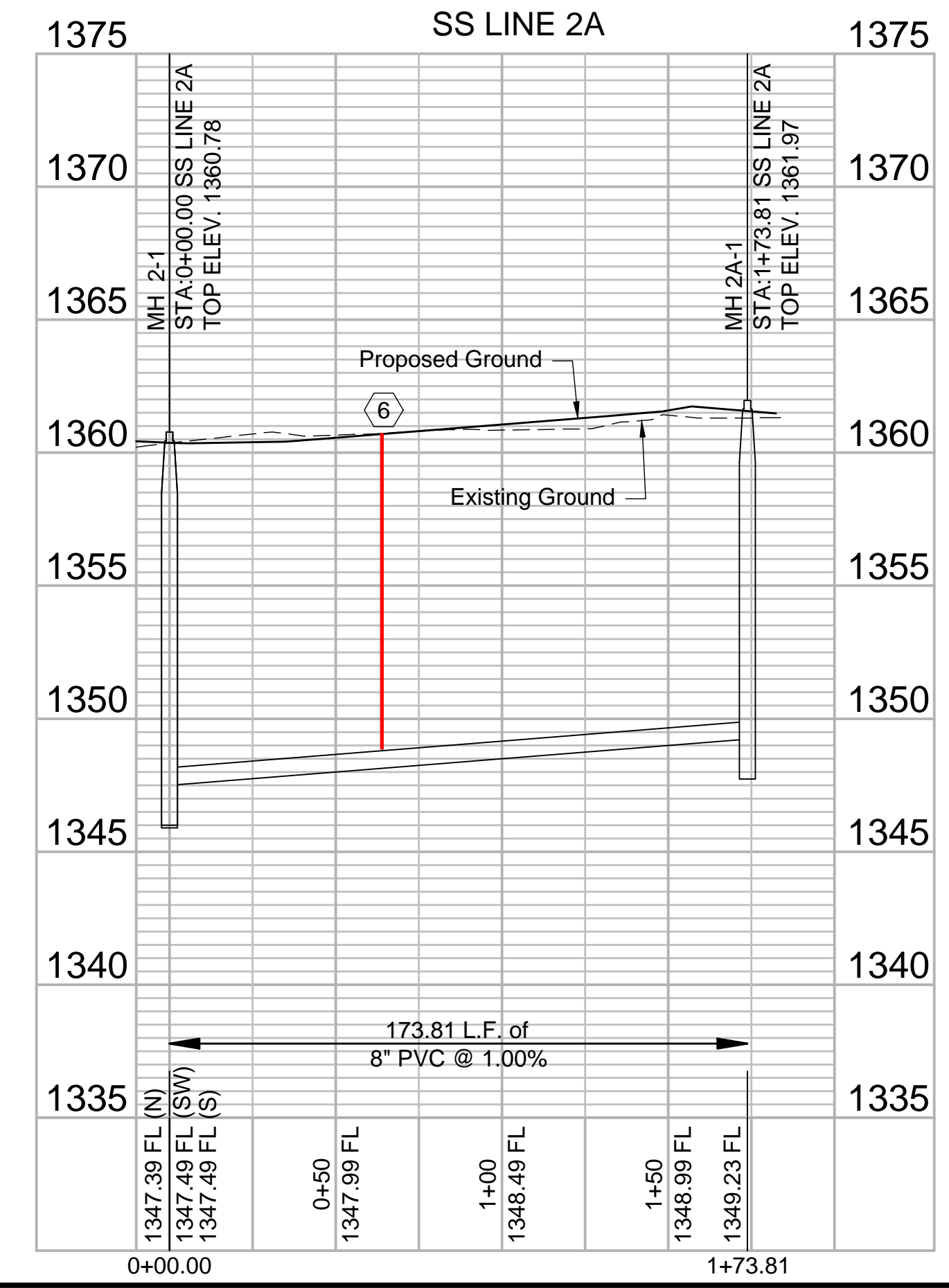
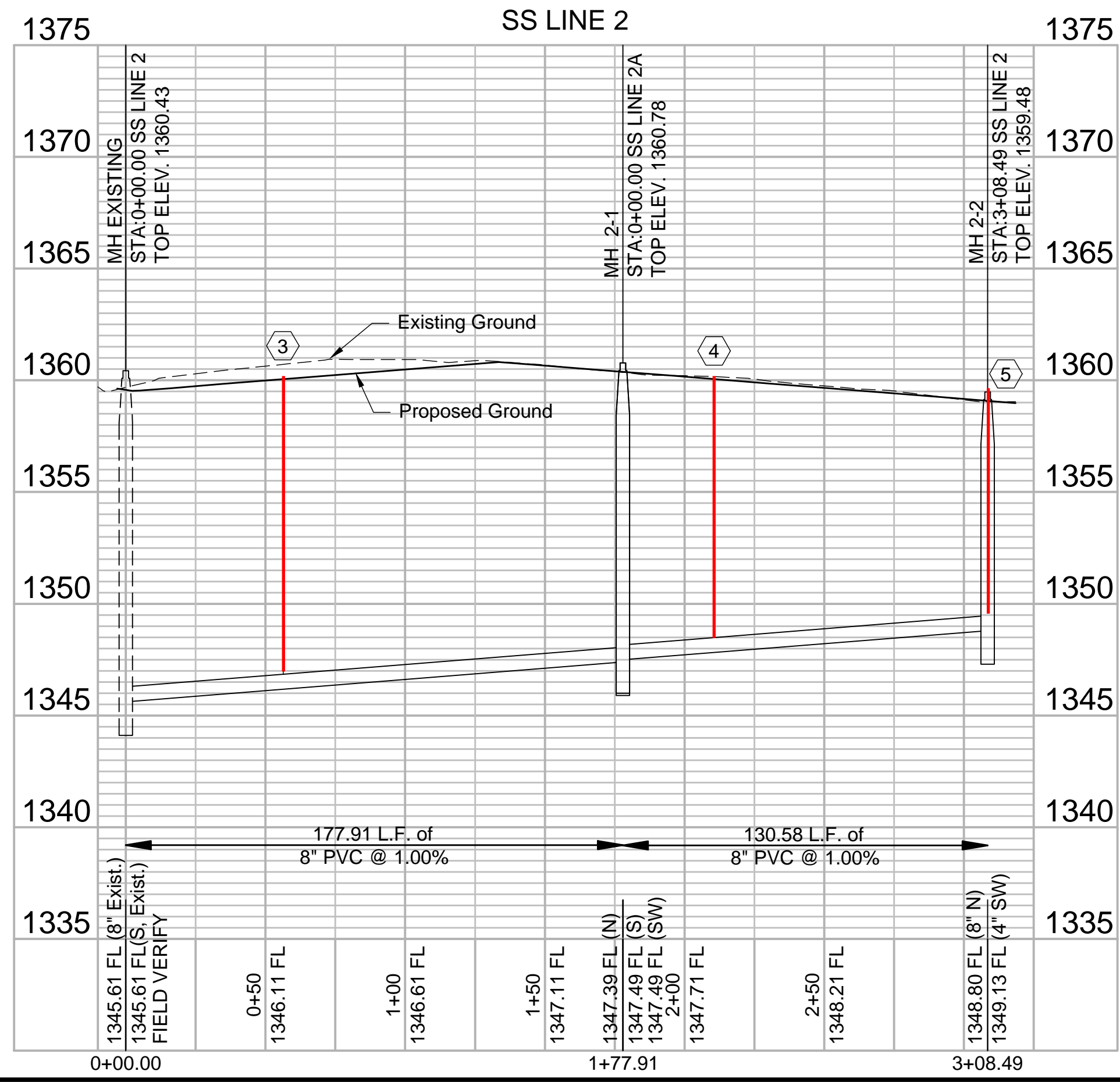
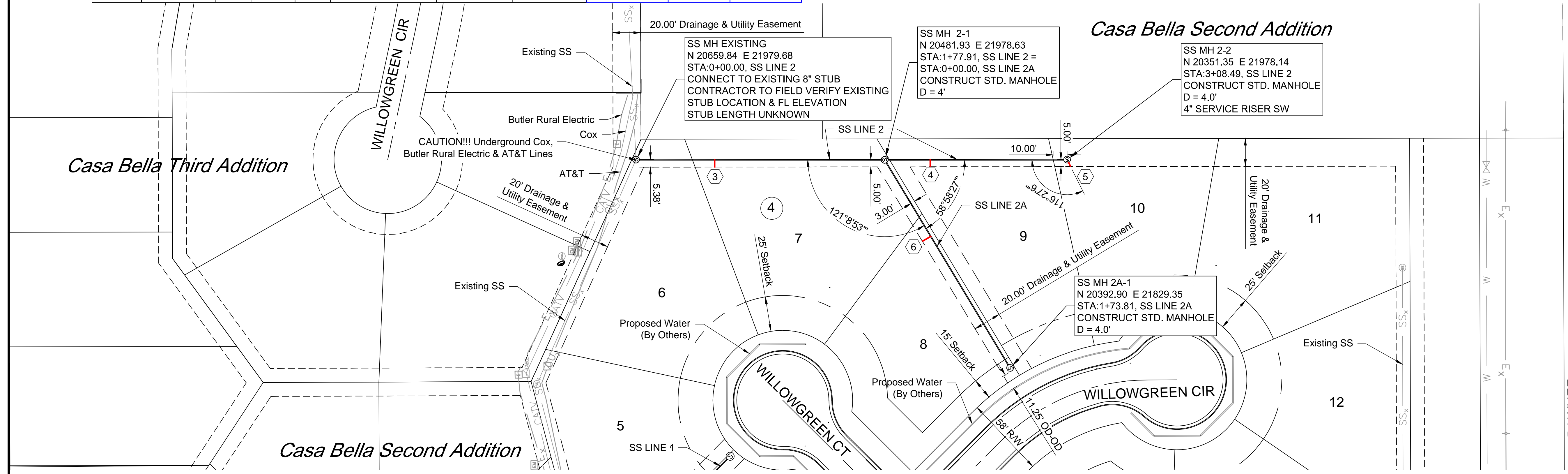


Digitally Signed 02/21/2019

NUMBER	TYPE	SERVING			STATION/DIRECTION	FOR INFORMATION ONLY		Distance from		
		LOT NO.	BLOCK NO.	LINE NO.		APPROX. LENGTH 4" PIPE		Main to Riser (Lt./Rt.)	Upstream MH	Downstream MH
						VERTICAL	HORIZONTAL			
3	8"X4" Tee	7	4	2	0+56 Right	12.0	5.5	5.5' Rt.	122'	56'
4	8"X4" Tee	9	4	2	2+11 Right	10.0	5.0	5' Rt.	97.5'	34'
5	MH	10	4	2	3+08 Right	8.5	6.0	6' Rt.	@ MH	@ MH
6	8"X4" Tee	8	4	2A	0+64 Right	10.0	7.0	7' Rt.	110'	64'



NOTES
 1. Contractor to grade around manholes as shown on the detail on Sheet 5. Contractor shall ensure no ponding is caused by grading around manholes until easements can be graded by others. Grading subsidiary to manholes.



File: L:\2018\18267018 - Casa Bella Phase 6\Drawings\C3D\Sanitary Sewer\18267018 SS Line 2 and 2A.dwg Last saved by: MTDolechek
 Last plotted by: Dolechek, Mark T. Plot Date: 2/21/2019 1:23 PM Plotter used: None

REV.	DATE	DESCRIPTION	BY

CITY OF WICHITA
 WICHITA, KANSAS
 CASA BELLA, PHASE 6
 SANITARY SEWER

SS Line 2 & 2A

JOB NO.: 18267018
 DATE: FEB 2019
 DESIGNED BY: MTD
 DRAWN BY: MTD

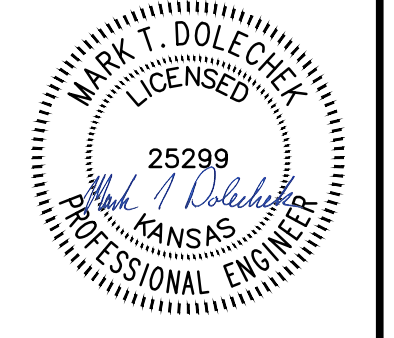
BAR IS ONE INCH ON ORIGINAL DRAWING
 IF NOT ONE INCH ON THIS SHEET, ADJUST SCALES ACCORDINGLY.

DRAWING NUMBER

SHEET NUMBER **6** OF **14**



© 2019 GARVER, LLC
 THIS DOCUMENT, ALONG WITH THE IDEAS AND DESIGNS CONVEYED HEREIN, SHALL BE CONSIDERED INSTRUMENTS OF PROFESSIONAL SERVICE AND ARE PROPERTY OF GARVER, LLC. ANY USE, REPRODUCTION, OR DISTRIBUTION OF THIS DOCUMENT, ALONG WITH THE IDEAS AND DESIGN CONTAINED HEREIN, IS PROHIBITED UNLESS AUTHORIZED IN WRITING BY GARVER, LLC OR EXPLICITLY ALLOWED IN THE GOVERNING PROFESSIONAL SERVICES AGREEMENT FOR THIS WORK.



Digitally Signed 02/21/2019

REV.	DATE	DESCRIPTION	BY

CITY OF WICHITA
 WICHITA, KANSAS
 CASA BELLA, PHASE 6
 SANITARY SEWER

SS Bubble Map

JOB NO.: 18267018
 DATE: FEB 2019
 DESIGNED BY: MTD
 DRAWN BY: MTD

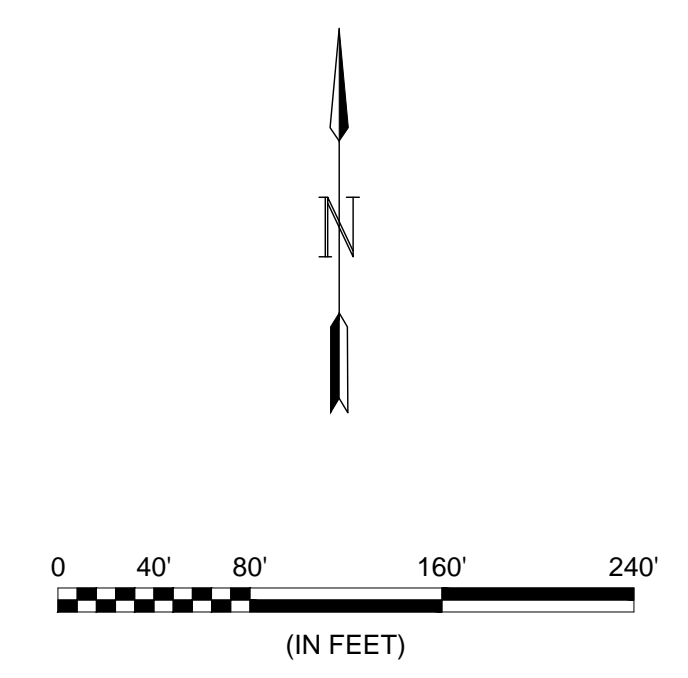
BAR IS ONE INCH ON ORIGINAL DRAWING
 IF NOT ONE INCH ON THIS SHEET, ADJUST SCALES ACCORDINGLY.

DRAWING NUMBER

SHEET NUMBER **13** OF **14**

Point Table			
Point #	Northing	Easting	Description
100	20056.22	21992.04	ADDITION COR.
101	20656.22	21994.29	ADDITION COR.
102	20735.73	21821.37	ADDITION COR.
103	20695.92	21667.23	ADDITION COR.
104	20696.46	21399.41	ADDITION COR.
105	20688.17	21329.13	ADDITION COR.
106	20738.42	21198.18	ADDITION COR.
107	20839.38	21223.26	ADDITION COR.
108	20058.41	20835.38	BLOCK COR.
109	20566.53	20847.00	BLOCK COR.
110	20552.65	21280.35	BLOCK COR.
111	20223.83	21435.79	BLOCK COR.
112	20281.83	21435.90	BLOCK COR.
113	20534.70	21335.58	BLOCK COR.
114	20313.22	21789.83	BLOCK COR.
115	20315.05	21848.10	BLOCK COR.
116	20463.01	21755.12	BLOCK COR.
117	20506.39	21798.66	BLOCK COR.
118	20547.48	21757.73	BLOCK COR.
119	20504.10	21714.18	BLOCK COR.
120	20587.75	21359.15	BLOCK COR.
121	20613.48	21300.48	BLOCK COR.
122	20058.56	20758.38	BLOCK COR.
123	20118.56	20758.50	BLOCK COR.
124	20178.54	20771.61	BLOCK COR.
125	20228.54	20771.71	BLOCK COR.
126	20286.54	20771.82	BLOCK COR.
127	20579.49	20784.32	BLOCK COR.
128	20477.24	20836.18	PC
129	20572.06	20914.72	PRC
130	20581.62	20998.75	PT
131	20581.28	21174.93	PC
132	20570.14	21234.79	PT
133	20527.42	21270.67	PC
134	20445.82	21255.47	PT
135	20353.17	21255.30	PC
136	20223.92	21384.05	PT
137	20281.92	21384.16	PC
138	20353.06	21313.30	PT
139	20445.71	21313.47	PC

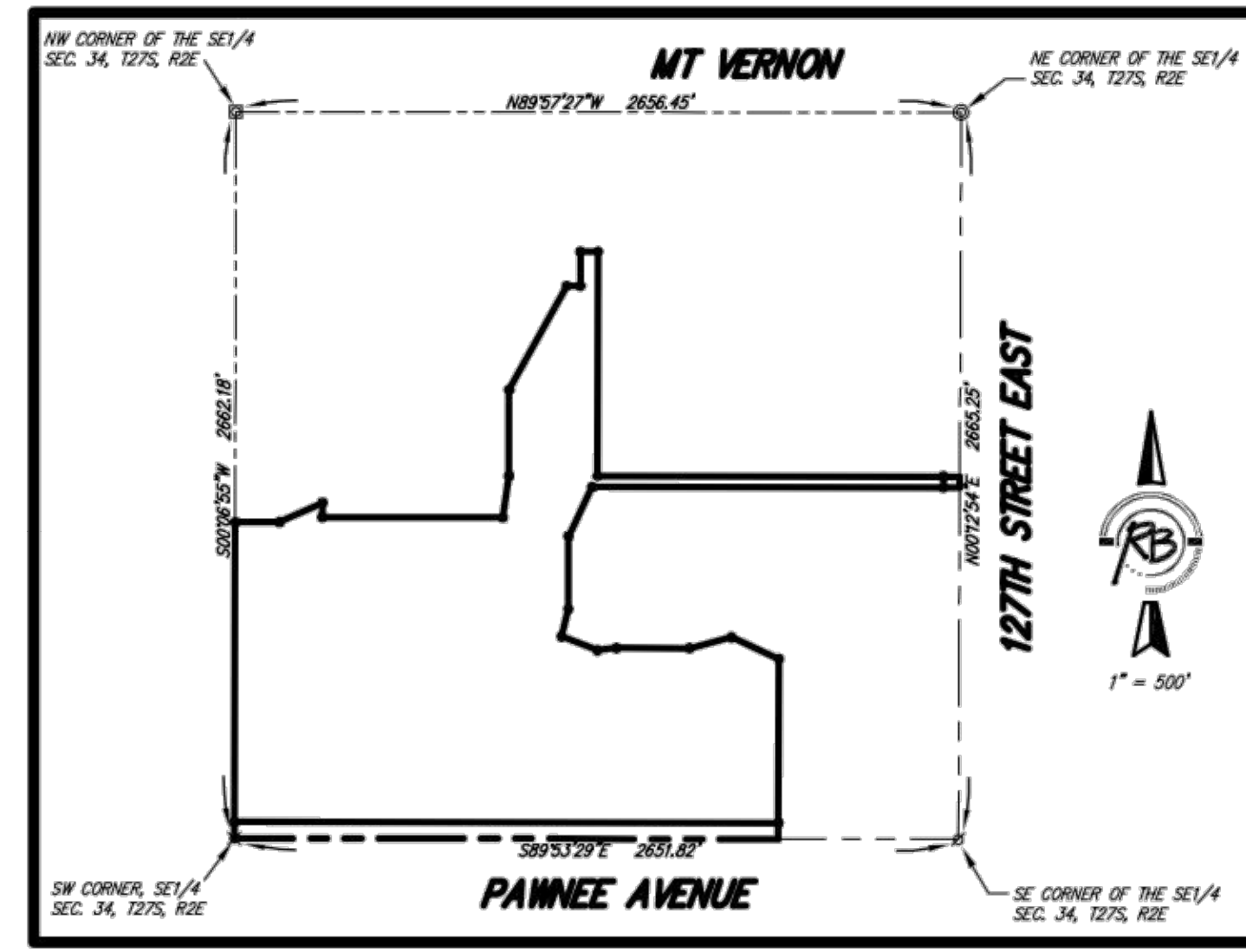
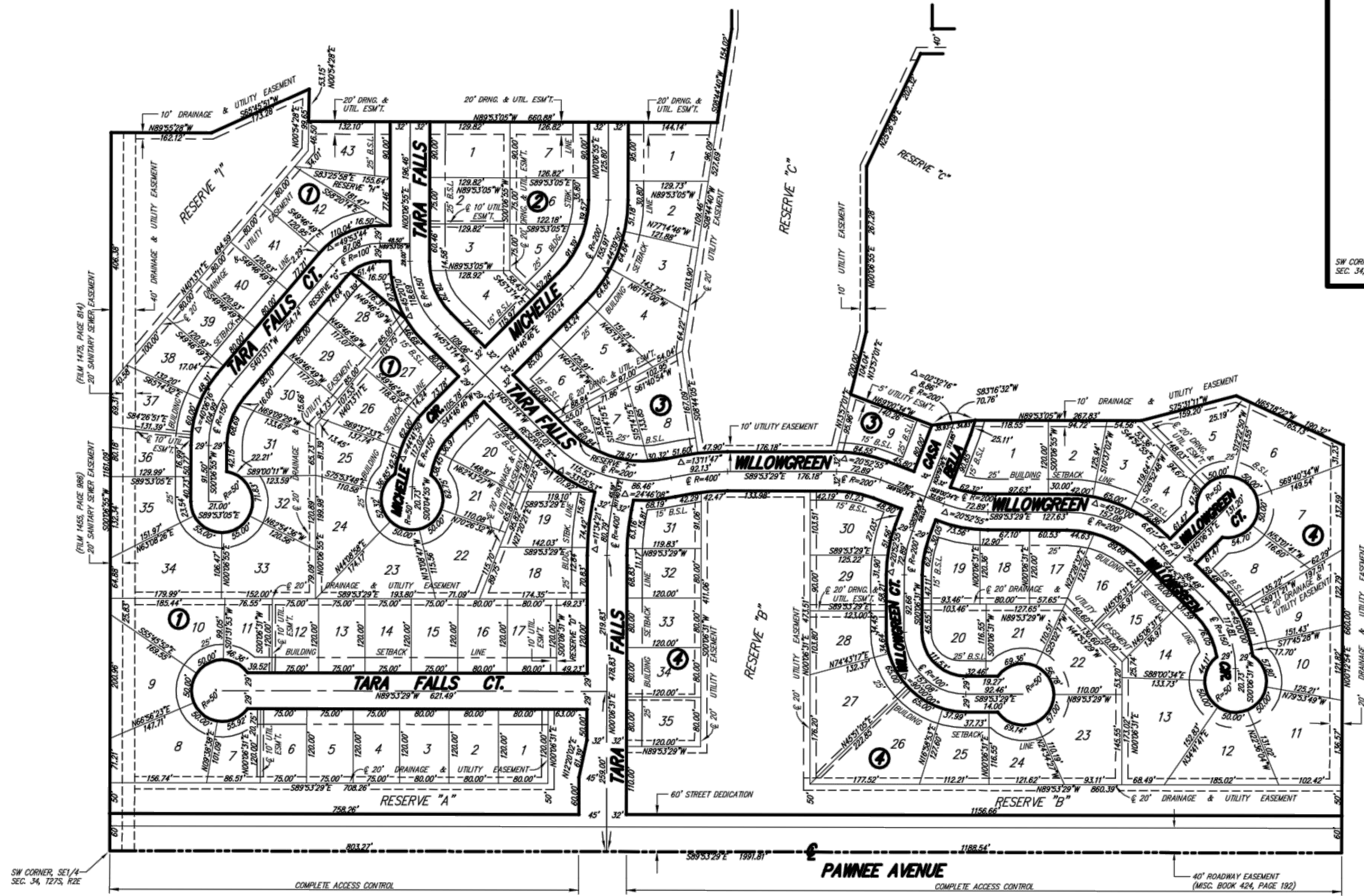
Point Table			
Point #	Northing	Easting	Description
140	20506.64	21324.82	PT
141	20518.41	21419.97	PT
142	20518.16	21547.61	PC
143	20467.85	21668.43	PT
144	20379.94	21756.00	PC
145	20420.88	21797.09	PT
146	20508.78	21709.52	PC
147	20576.16	21547.72	PC
148	20576.41	21420.08	PC
149	20629.89	21257.71	PC
150	20645.28	21175.05	PT
151	20645.62	20998.87	PC
152	20634.40	20900.23	PRC
153	20678.78	20743.85	PT
154	20633.35	20698.77	PC
600	20693.01	21667.99	MH EXIST
601	20593.55	21767.16	SSMH 1-1
602	20659.84	21979.68	MH EXIST
603	20481.93	21978.63	SSMH 2-1
604	20351.35	21978.14	SSMH 2-2
605	20392.90	21829.35	SSMH 2A-1



File: L:\2018\18267018 - Casa Bella Phase 6\Drawings\C3D\18267018 Bubble Maps.dwg Last Save: 2/19/2019 5:41 PM Last saved by: MTDolechek
 Last plotted by: Dolechek, Mark T. Plot Style: --- Plot Scale: 1:2,584.9 Plot Date: 2/21/2019 1:24 PM Plotter used: None

CASA BELLA

Wichita, Sedgwick County, Kansas



BENCH MARK: SRB BRASS DISC 55.45' E.
 & 5.13' S. OF THE N.W. COR., SW/4, SEC. 35,
 T27S, R2E
 ELEV.=1348.35 (NGVD) = 160.95 (CITY DATUM)

- SURVEY MARKER LEGEND**
- = PK NAIL IN CONCRETE
 - = 1/2" IRON PIPE
 - = 3/4" IRON PIPE
 - ⊗ = 5/8" REBAR W/GARBER CAP (FOUND)
 - ⊗ = 1" BAR (FOUND)
 - = 5/8" REBAR W/R&B CAP (SET)

BLOCK	LOT NO.	ELEVATION (K.G.V.D.)
1	37, 38, 39, 40	1350.50
3	1, 2, 3, 4, 8, 9	1344.50
4	26, 27, 28, 29, 30, 31, 32, 33, 34, 35	1348.50

SHEET 2 OF 2



Ruggles & Bohm, P.A.
 Engineering, Surveying, Land Planning
 924 North Main (316) 264-8008
 Wichita, Kansas 67203 (316) 264-4621 fax
 www.rbkansas.com E-mail: info@rbkansas.com

DWG FILE: SURVEY BASE
 PROJECT NO. 2521P
 SEPTEMBER 26, 2005



© 2019 GARVER, LLC
 THIS DOCUMENT, ALONG WITH THE
 IDEAS AND DESIGNS CONVEYED
 HEREIN, SHALL BE CONSIDERED
 INSTRUMENTS OF PROFESSIONAL
 SERVICE AND ARE PROPERTY OF
 GARVER, LLC. ANY USE,
 REPRODUCTION, OR DISTRIBUTION
 OF THIS DOCUMENT, ALONG WITH
 THE IDEAS AND DESIGN CONTAINED
 HEREIN, IS PROHIBITED UNLESS
 AUTHORIZED IN WRITING BY
 GARVER, LLC OR EXPLICITLY
 ALLOWED IN THE GOVERNING
 PROFESSIONAL SERVICES
 AGREEMENT FOR THIS WORK.

FOR INFORMATION ONLY

REV.	DATE	DESCRIPTION	BY

CITY OF WICHITA
 WICHITA, KANSAS
 CASA BELLA, PHASE 6
 SANITARY SEWER

SS Plat

JOB NO.: 18267018
 DATE: FEB 2019
 DESIGNED BY: MTD
 DRAWN BY: MTD

BAR IS ONE INCH ON ORIGINAL DRAWING

IF NOT ONE INCH ON THIS SHEET, ADJUST SCALES ACCORDINGLY.

DRAWING NUMBER

SHEET NUMBER **14** OF **14**

File: L:\2018\18267018 - Casa Bella Phase 6\Drawings\C3018267018 Plat Maps.dwg Last Save: 2/19/2019 5:43 PM Last saved by: MTDolechek
 Last plotted by: Dolechek, Mark T. Plot Date: 2/21/2019 1:25 PM Plotter used: None Plot Scale: --- Plot Scale: None