

GENERAL NOTES:

- Contractor will be required to provide notice to utility companies a minimum of Seventy-two (72) hours prior to any excavation, as follows:
 Kansas One-Call 687-2470
 The Contractor must notify the following in case of an emergency:
 Cox Communications 262-4270
 Kansas Gas Service 1-888-482-4950
 Westar Energy 383-8650
 Aquila Energy 1-800-303-0357
 ATT 268-2245
 City of Wichita Water Dept. 268-4563
 City of Wichita Sewer Maint. 268-4024
 City of Wichita Storm Sewer Maint. 268-4090
 City of Wichita Traffic Maint. 268-4034
 Conoco Phillips Pipeline Co. 1-877-267-2290
 Southern Star Pipeline Co. 529-6600
 Kinder-Morgan Pipeline Co. 1-888-844-5658
- Utility service lines, poles, valve boxes, meters, and etcetera are to be adjusted as necessary by others prior to construction unless the plans specifically call for their adjustment by the Contractor or unless the plans specifically identify a utility to be adjusted by its owner during construction. Existing utilities and their location, as shown on the plans, represent the best information obtainable for design. The Contractor will be required to work around existing utilities within the right-of-way which do not conflict with proposed construction.
- Rubble from the removal of miscellaneous structures and excess excavation which is to be wasted shall be disposed of on sites to be provided by the Contractor. These sites shall be approved by the Engineer as to suitability, appearance and site location. Locations, in the opinion of the Engineer, that will leave an unsightly appearance will not be approved. All disposal sites must be approved by the Kansas Department of Health and Environment. Material either stockpiled or disposed of in a flood plain would require a Kansas State Board of Agriculture permit. Any material dumped in waters of the United States or wetlands is subject to U.S. Corps. of Engineers permitting regulations. Any material buried or stockpiled beyond approved construction limits would require additional archaeological investigations unless buried in a previously approved borrow location.
- Trees and shrubs in public right-of-way which are in direct conflict with proposed new construction shall be removed by the Contractor ONLY with the Developer or Baughman Company approval. Trees and shrubs which are not in direct conflict with proposed new construction shall be saved and protected from damage.
- The Contractor shall give all property owners and/or tenants of developed property abutting the construction of this project a minimum of ten (10) days notice prior to start of construction.
- The Contractor shall be responsible for preserving property irons. The Contractor will be required to re-establish any property irons which are damaged or destroyed by his construction operations. Such irons shall be re-established by a licensed Land Surveyor in accordance with state laws.
- All existing and proposed erosion control measures including silt fencing, erosion control mat, straw bales, inlet barriers, and const. entrance shall be maintained throughout construction by the Contractor and until project is accepted by the City of Wichita. The on-site Engineer shall complete weekly reports on the status of erosion control measures. The Contractor shall be required to comply with maintenance and/or replacement of erosion control measures as determined by the on-site Engineer until project is accepted by City of Wichita.
- A saw cut of at least one-half the depth of existing surface courses or one-fourth the depth of the existing total pavement thickness shall be provided at locations where proposed construction abuts the existing surface course or pavement for which partial removal of that surface or pavement is required. Sawed joint to facilitate removal within three (3) feet of existing joints will not be permitted and for such instances the limits of removal shall extend to the existing joint. Such saw cuts will not be paid for directly and this cost shall be considered as subsidiary to the removal of the surface or pavement.
- Areas shown on sheet 16 including Reserve "E", Reserve "J" above the static water surface, Reserve "L" above the static water surface, & any disturbed areas in 37th St. N. R/W shall be seeded and mulched as follows:
 Seed -- Kansas Premium Fescue Blend; 8 lbs. PLS/1000 Sq. Ft.
 Annual Rye grass; 3 lbs./1000 Sq. Ft.
 Fertilizer -- 12-24-12 Ratio; 45 Lbs./Ac.
 Mulch -- 2 Tons Prairie Hay/Ac.
 All other disturbed areas within street R/W and lots are to be seeded as follows:
 Seed -- Rye grass; 5 lbs./1000 Sq. Ft.
 All costs associated with seeding including mobilization, preparation of ground, seeding, fertilizing, mulching, etc. shall be included in the L.S. bid item "Seeding".
 An additional bid item for "Seeding, Temporary" has been included with the project and may be used at the discretion of the design engineer. Temporary seed shall be Annual Rye at 5 lbs./1000 Sq. Ft. unless otherwise noted and shall be planted when permanent seed or sod cannot be used due to seasonal limitations. If the "Seeding, Temporary" bid item is not used, 100% of the pay item will be deducted from the contract. All costs associated with temporary seeding including mobilization, preparation of ground, seeding, etc. shall be included in the L.S. bid item "Seeding, Temporary".
- The Contractor shall adjust valve boxes as necessary to match proposed grade. Cost to be included in bid item, "Site Restoration."
- The Contractor shall drain any standing water in sump areas of the proposed pavement. Contractor shall overexcavate and recompact these areas as required to maintain compaction of 95% Standard Proctor Density. Cost to be incidental to pavement.
- Limits of earthwork shall match existing ground elevations at the right-of-way line unless otherwise noted on the plans with a new finished grade elevation. When a new finished grade elevation is shown, the earthwork shall extend one foot beyond the right-of-way line and then slope up or down using permissible slopes to match the existing ground surface.
- The Developer for this project is Jay Russell
 P.O. Box 75337
 Wichita, KS 67272
 (316) 722-2417
 jwrussell1105@cloud.com
- Excess excavation shall be stockpiled or spread on-site at a location determined by the Developer or Design Engineer.

Street Paving and Incidental Storm Water Sewer for Lakeway to serve

SIENA LAKES 2ND ADDITION - PHASE II

LAKEWAY: From the South Line of Lot 4, Block B, South to the South Line of Lot 10, Block B
 LAKEWAY CT. (Lots 18 through 25, Block A): From the East Line of Lakeway, East to and Including the Hammerhead
 LAKEWAY CT. (Lots 26 through 32, Block A): From the East Line of Lakeway, East to and Including the Cul-de-sac

CITY OF WICHITA, KANSAS

Gary Janzen, P.E. City Engineer
 Project Number: 472-85421
 OCA Number: 766475

BENCHMARKS

Chiseled square at the end of the top of curb at the southeast corner of Ridge Port and 37th St N. Elev. = 1333.05 NAVD88

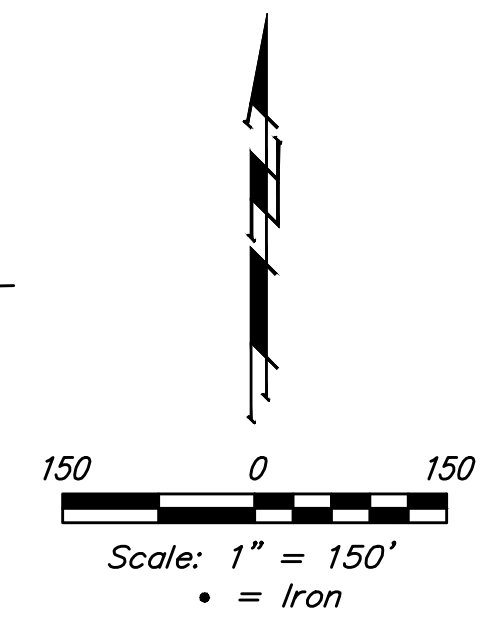
City of Wichita Benchmark Disk adjacent to fire hydrant, south end of south curb return at the intersection of Lakeway St & Lakeway Ct. (Lots 10-17, Block A) Siena Lakes 2nd Addition. Elev. = 1330.78 NAVD88

Chiseled square with "X" in the top of curb inlet adjacent to southeast corner of Lot 32, Block B, Siena Lakes 2nd Addition. Elev. = 1329.88 NAVD88

Project Earthwork Totals (CY unadjusted for shrink/swell)	Excavation Compacted Fill Loose Fill		
	Excavation	Compacted Fill	Loose Fill
Street (R/W)	1,248	95	304
Easement Grading*	655	0	298
Project Total	1,903	95	602

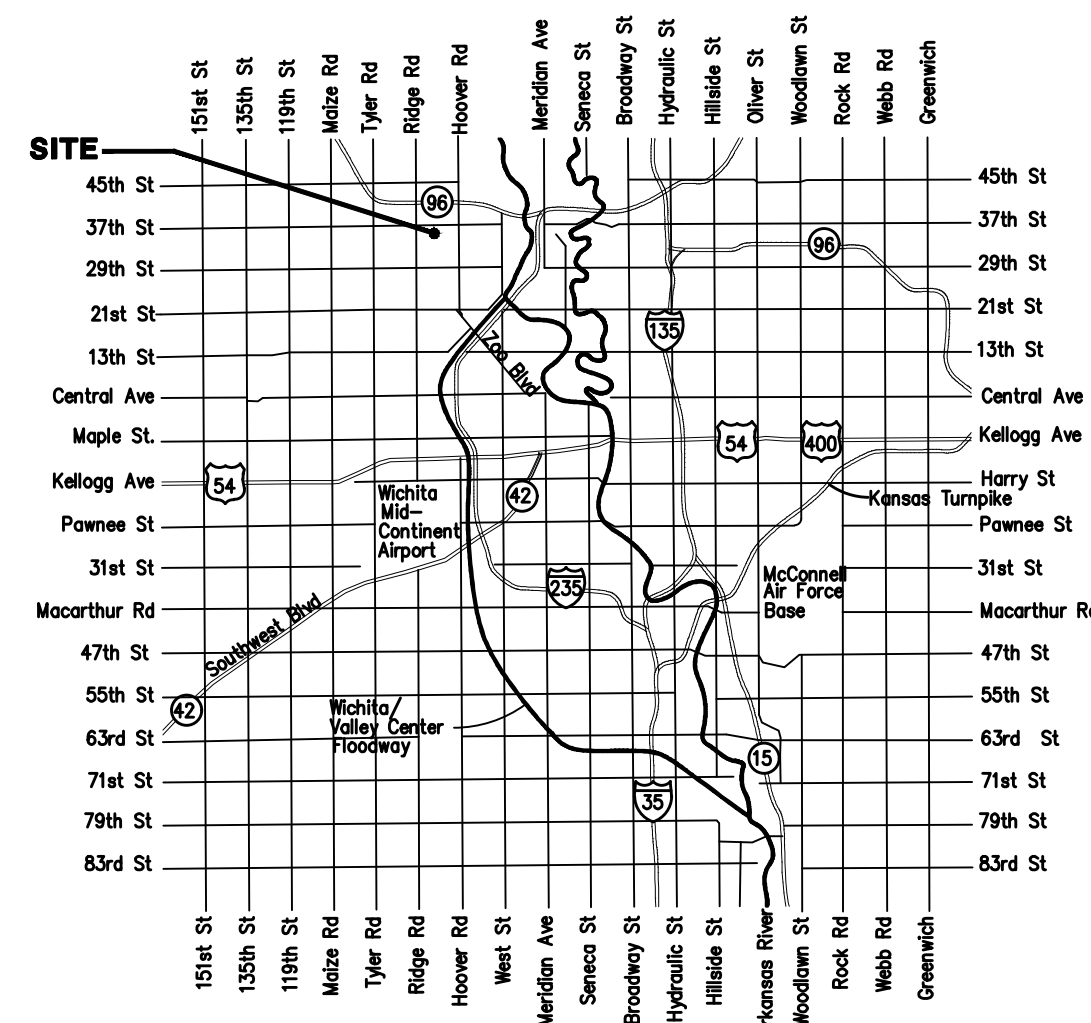
Total Project Length
 794 L.F. = 0.15 Miles

*For Information Only

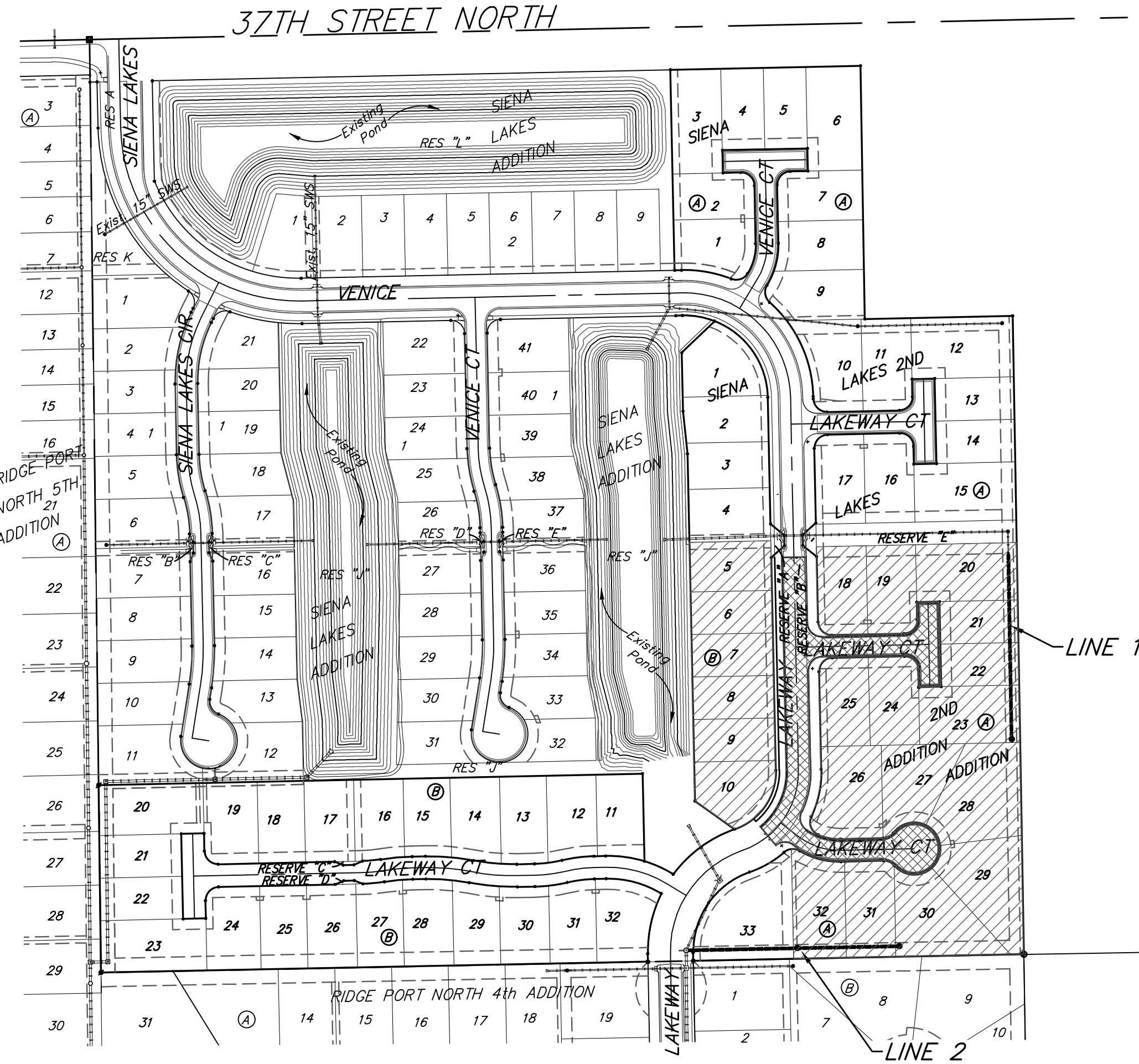


SHEET INDEX

Title Sheet	1
Asphalt Paving Detail	2
Wheelchair Ramp Details	3
Curb & Gutter Details	4
Sign Details	5
Valley Gutter Details	6
Lakeway	7-8
Lakeway Ct	9
Lakeway Ct	10
SWS Line 1	11
SWS Line 2	12
Erosion Control Plan	13
Erosion Control BMP Details	14-18
Backyard Inlet Detail	19
Frame and Cover Details	20
Cross Sections	21-23
Coordinate Sheet	24
Copy of Plat	25



Vicinity Map



Proposed Streets: [Cross-hatch pattern]

Benefit District: [Diagonal line pattern]



Baughman Company, P.A. 315 Ellis St. Wichita, KS 67211 P 316-262-7271 F 316-262-0148
 ENGINEERING | SURVEYING | PLANNING | LANDSCAPE ARCHITECTURE

