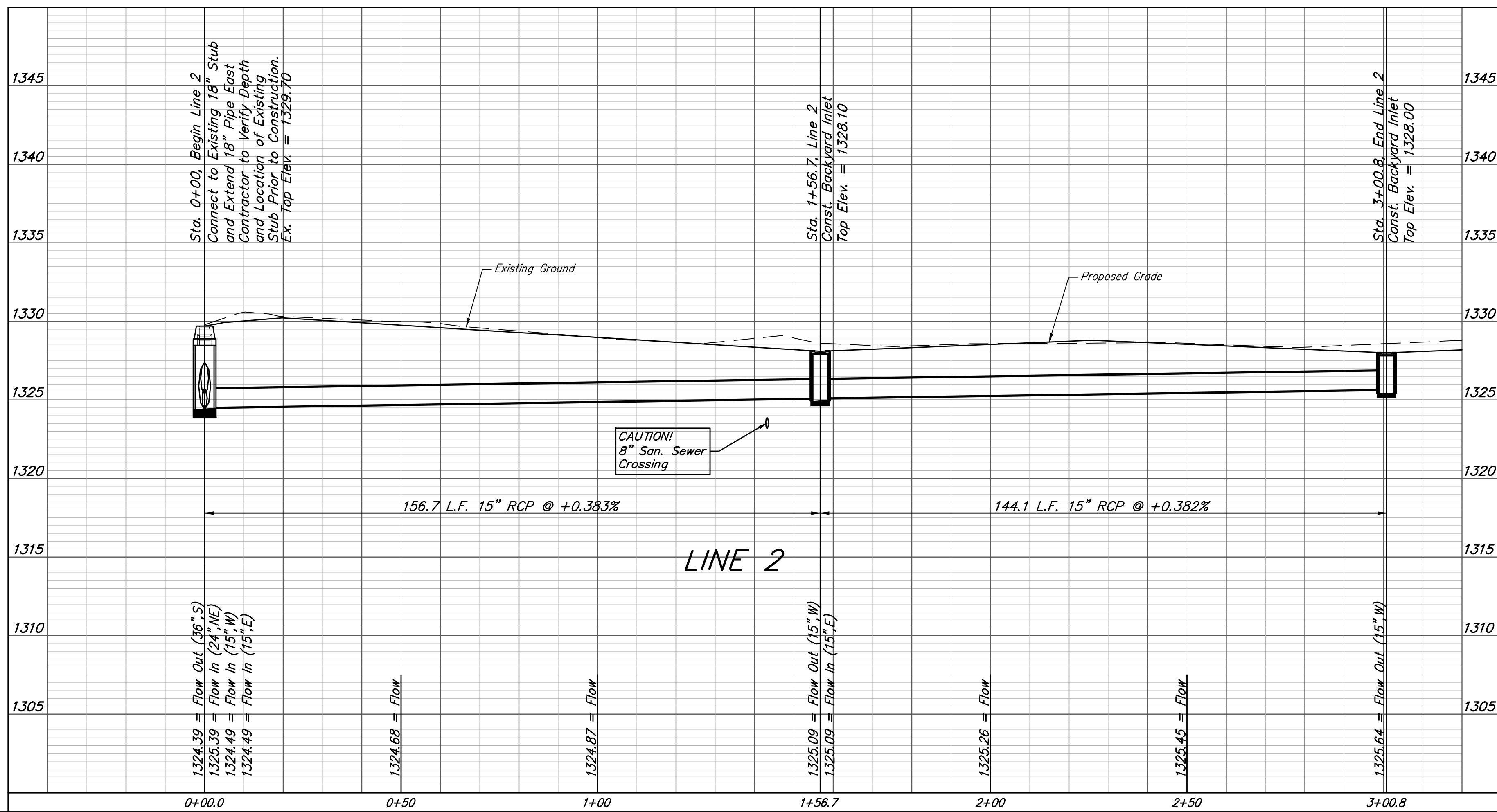
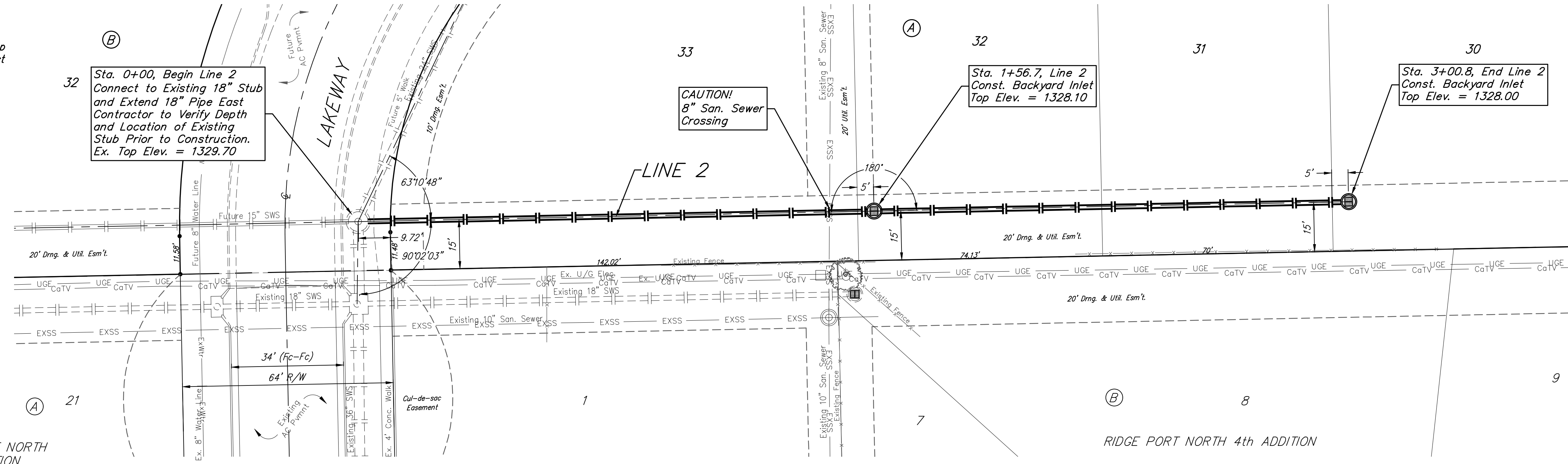
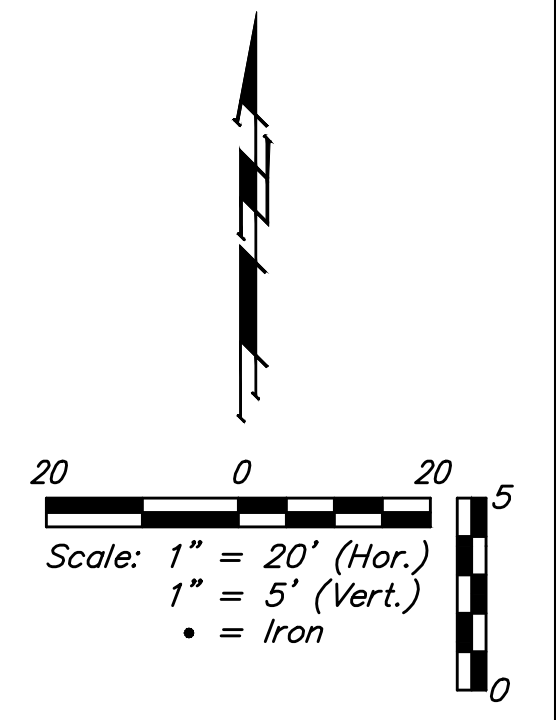


**BENCHMARKS:**  
 Chiseled square at the end of the top of curb at the southeast corner of Ridge Port and 37th ST N.  
 Elev. = 1333.05 NAVD88

City of Wichita Benchmark Disk adjacent to fire hydrant, south end of south curb return at the intersection of Lakeway ST & Lakeway Ct. (Lots 10-17, Block A) Siena Lakes 2nd Addition.  
 Elev. = 1330.78 NAVD88

Chiseled square with "X" in the top of curb inlet adjacent to southeast corner of Lot 32, Block B, Siena Lakes 2nd Addition.  
 Elev. = 1329.88 NAVD88

SIENA LAKES 2ND ADDITION



		Siena Lakes 2nd Addition - Phase II	
		<b>LINE 2</b>	
Storm Water Sewer Improvements		Baughman Company, P.A. 315 Ellis St. Wichita, KS 67211 P 316-262-7271 F 316-262-0149 ENGINEERING   SURVEYING   PLANNING   LANDSCAPE ARCHITECTURE	
PROJECT NUMBER 472-85421	DESIGN AEG	DRAWN JAK	APPROVED DATE 9/03/19
REVISIONS:	SCALE Noted SHEET		
<b>12 OF 25</b>			