

BENCHMARKS:
 Chiseled square at the end of the top of curb at the southeast corner of Ridge Port and 37th St N.
 Elev. = 1333.05 NAVD88

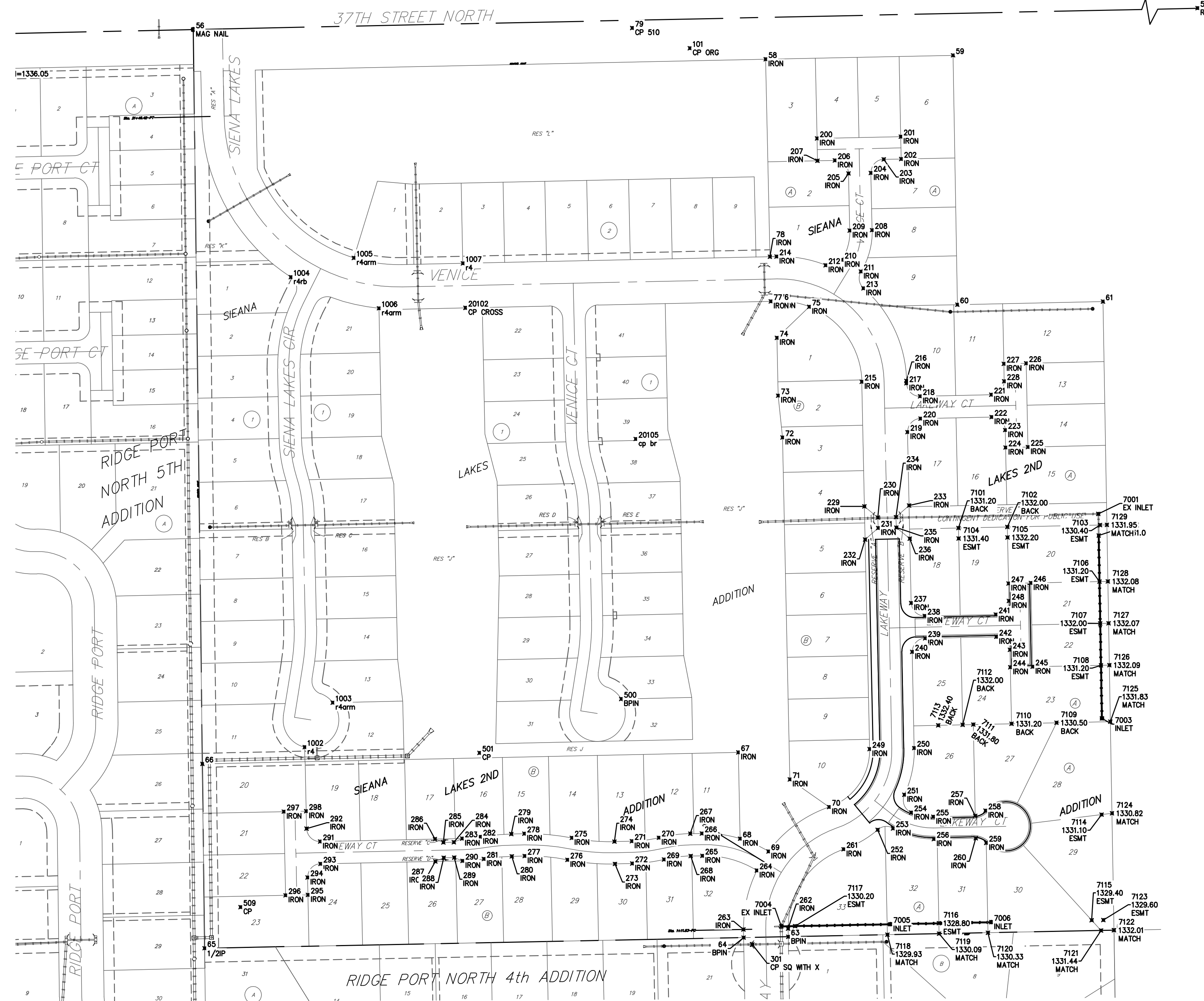
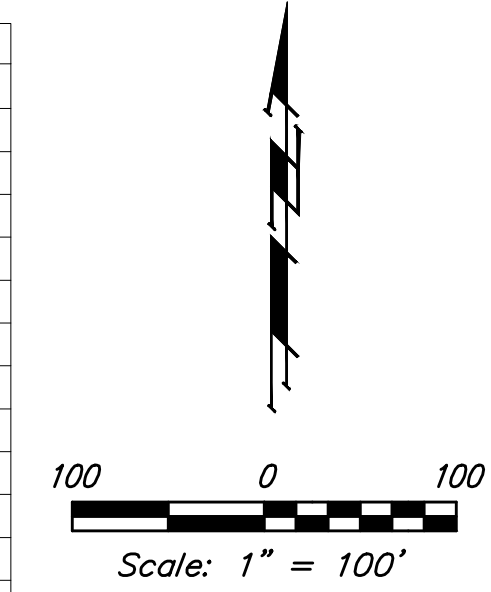
City of Wichita Benchmark Disk adjacent to fire hydrant, south end of south curb return at the intersection of Lakeway ST & Lakeway Ct. (Lots 10-17, Block A) Siena Lakes 2nd Addition.
 Elev. = 1330.78 NAVD88

Chiseled square with "X" in the top of curb inlet adjacent to southeast corner of Lot 32, Block B, Siena Lakes 2nd Addition.
 Elev. = 1329.88 NAVD88

SWS Points			
Point #	Northing	Easting	Description
7001	1,708,739.07	1,626,687.07	EX INLET
7002	1,708,708.07	1,626,687.62	0+31.0
7003	1,708,446.12	1,626,692.23	INLET
7004	1,708,147.99	1,626,232.95	EX INLET
7005	1,708,151.17	1,626,389.58	INLET
7006	1,708,154.02	1,626,533.70	INLET

Control Points			Control Points				
Point #	Northing	Easting	Description	Point #	Northing	Easting	Description
56	1,709,432.97	1,625,390.63	MAG NAIL	248	1,708,614.33	1,626,558.92	IRON
57	1,709,488.31	1,627,982.48	RS	249	1,708,402.10	1,626,359.37	IRON
58	1,709,390.46	1,626,210.60	IRON	250	1,708,403.46	1,626,423.36	IRON
59	1,709,396.14	1,626,478.94	IRON	251	1,708,336.68	1,626,409.24	IRON
60	1,709,038.86	1,626,485.13		252	1,708,286.44	1,626,371.07	IRON
61	1,709,043.23	1,626,693.72		253	1,708,288.40	1,626,393.09	IRON
62	1,708,142.50	1,626,709.57	1/2IP	254	1,708,311.06	1,626,419.20	IRON
63	1,708,133.19	1,626,242.96	BPIN	255	1,708,305.15	1,626,450.75	IRON
64	1,708,131.97	1,626,178.94	BPIN	256	1,708,273.16	1,626,451.43	IRON
65	1,708,116.72	1,625,406.99	1/2IP	257	1,708,306.43	1,626,510.80	IRON
66	1,708,380.91	1,625,403.85		258	1,708,313.87	1,626,525.48	IRON
67	1,708,397.32	1,626,171.38	IRON	259	1,708,267.63	1,626,526.46	IRON
68	1,708,273.70	1,626,174.02	IRON	260	1,708,274.44	1,626,511.48	IRON
69	1,708,255.43	1,626,214.61	IRON	261	1,708,258.46	1,626,322.27	IRON
70	1,708,318.97	1,626,301.41	IRON	262	1,708,144.74	1,626,242.73	IRON
71	1,708,358.68	1,626,245.30	IRON	263	1,708,143.57	1,626,178.74	IRON
72	1,708,848.57	1,626,234.84	IRON	264	1,708,228.16	1,626,197.86	IRON
73	1,708,908.45	1,626,228.56	IRON	265	1,708,249.19	1,626,119.99	IRON
74	1,708,991.35	1,626,226.79	IRON	266	1,708,281.18	1,626,119.24	IRON
75	1,709,035.75	1,626,272.96	IRON	267	1,708,280.79	1,626,102.60	IRON
76	1,709,043.57	1,626,227.67	IRON	268	1,708,248.80	1,626,103.34	IRON
77	1,709,043.75	1,626,218.01	IRON	269	1,708,243.85	1,626,065.02	IRON
78	1,709,107.53	1,626,216.65	IRON	270	1,708,274.97	1,626,057.61	IRON
79	1,709,435.27	1,626,019.52	CP S10	271	1,708,270.01	1,626,018.88	IRON
101	1,709,406.33	1,626,102.00	CP ORG	272	1,708,238.02	1,626,019.56	IRON
102	1,709,034.28	1,625,780.64	CP CROSS	273	1,708,237.49	1,625,994.68	IRON
200	1,709,276.95	1,626,284.14	IRON	274	1,708,269.48	1,625,994.00	IRON
201	1,709,279.49	1,626,404.11	IRON	275	1,708,274.81	1,625,932.89	IRON
202	1,709,247.50	1,626,404.79	IRON	276	1,708,243.42	1,625,926.68	IRON
203	1,709,246.97	1,626,379.79	IRON	277	1,708,248.75	1,625,865.57	IRON
204	1,709,227.57	1,626,361.20	IRON	278	1,708,280.74	1,625,864.89	IRON
205	1,709,226.89	1,626,329.21	IRON	279	1,708,280.35	1,625,846.30	IRON
206	1,709,245.48	1,626,309.81	IRON	280	1,708,248.36	1,625,846.98	IRON
207	1,709,244.95	1,626,284.82	IRON	281	1,708,244.67	1,625,806.98	IRON
208	1,709,145.64	1,626,362.94	IRON	282	1,708,276.24	1,625,801.80	IRON
209	1,709,144.96	1,626,330.95	IRON	283	1,708,273.85	1,625,775.88	IRON
210	1,709,103.06	1,626,319.65	IRON	284	1,708,268.60	1,625,763.99	IRON
211	1,709,086.39	1,626,346.97	IRON	285	1,708,268.28	1,625,749.00	IRON
212	1,709,095.26	1,626,296.51	IRON	286	1,708,273.03	1,625,736.89	IRON
213	1,709,062.25	1,626,350.62	IRON	287	1,708,241.03	1,625,737.57	IRON
214	1,709,107.73	1,626,226.30	IRON	288	1,708,246.29	1,625,749.46	IRON
215	1,708,928.23	1,626,348.21	IRON	289	1,708,246.60	1,625,764.46	IRON
216	1,708,929.59	1,626,412.20	IRON	290	1,708,241.86	1,625,776.56	IRON
217	1,708,926.17	1,626,412.27	IRON	291	1,708,269.54	1,625,572.39	IRON
218	1,708,907.58	1,626,431.67	IRON	292	1,708,288.13	1,625,553.00	IRON
219	1,708,856.18	1,626,413.75	IRON	293	1,708,237.54	1,625,573.07	IRON
220	1,708,875.58	1,626,432.35	IRON	294	1,708,218.14	1,625,554.48	IRON
221	1,708,909.74	1,626,533.65	IRON	295	1,708,193.15	1,625,555.01	IRON
222	1,708,877.75	1,626,534.32	IRON	296	1,708,192.47	1,625,523.02	IRON
223	1,708,859.15	1,626,553.72	IRON	297	1,708,312.44	1,625,520.47	IRON
224	1,708,834.16	1,626,554.25	IRON	298	1,708,313.12	1,625,552.46	IRON
225	1,708,834.84	1,626,586.25	IRON	301	1,708,122.02	1,626,191.52	CP SQ WITH X
226	1,708,954.81	1,626,583.70	IRON	500	1,708,473.86	1,626,003.64	BPIN
227	1,708,954.13	1,626,551.71	IRON	501	1,708,396.67	1,625,800.62	CP
228	1,708,929.14	1,626,552.24	IRON	509	1,708,175.57	1,625,458.41	CP
229	1,708,749.73	1,626,352.00	IRON	1002	1,708,404.76	1,625,550.36	r4
230	1,708,733.89	1,626,371.34	IRON	1003	1,708,468.64	1,625,590.55	r4arm
231	1,708,718.89	1,626,371.66	IRON	1004	1,709,078.26	1,625,530.46	r4b
232	1,708,702.24	1,626,353.01	IRON	1005	1,709,105.84	1,625,620.73	r4arm
233	1,708,751.09	1,626,415.98	IRON	1008	1,709,033.64	1,625,656.70	r4arm
234	1,708,734.44	1,626,397.33	IRON	1007	1,709,098.12	1,625,776.90	r4
235	1,708,719.44	1,626,397.65	IRON	10475	1,709,375.89	1,625,091.07	PLAT BM=1336.05
236	1,708,703.60	1,626,416.99	IRON	20102	1,709,034.28	1,625,780.64	CP CROSS
237	1,708,611.36	1,626,418.95	IRON	20105	1,708,846.41	1,626,024.39	cp br
238	1,708,592.77	1,626,438.35	IRON				
239	1,708,560.77	1,626,439.03	IRON				
240	1,708,541.37	1,626,420.43	IRON				
241	1,708,594.93	1,626,540.32	IRON				
242	1,708,562.94	1,626,541.00	IRON				
243	1,708,544.34	1,626,560.40	IRON				
244	1,708,519.35	1,626,560.93	IRON				
245	1,708,520.03	1,626,592.92	IRON				
246	1,708,640.00	1,626,590.38	IRON				
247	1,708,639.32	1,626,558.39	IRON				

Easement Points				
Point #	Northing	Easting	Elevation	Description
7101	1,708,718.8196	1,626,486.6845	1331.20	BACK
7102	1,708,720.3042	1,626,556.6888	1332.00	BACK
7103	1,708,723.1207	1,626,689.4326	1330.40	ESMT
7104	1,708,703.8230	1,626,487.0026	1331.40	ESMT
7105	1,708,705.3076	1,626,556.9869	1332.20	ESMT
7106	1,708,642.0886	1,626,688.7792	1331.20	ESMT
7107	1,708,582.0975	1,626,689.8346	1332.00	ESMT
7108	1,708,522.1064	1,626,690.8901	1331.20	ESMT
7109	1,708,439.7356	1,626,627.1307	1330.50	BACK
7110	1,708,438.3677	1,626,562.6497	1331.20	BACK
7111	1,708,437.2090	1,626,508.0303	1331.80	BACK
7112	1,708,436.8830	1,626,492.6654	1332.00	BACK
7113	1,708,436.1407	1,626,457.6733	1332.40	BACK
7114	1,708,308.2109	1,626,691.6721	1331.10	BACK
7115	1,708,156.8698	1,626,677.5055	1329.40	ESMT
7116	1,708,152.5398	1,626,458.7192	1328.80	ESMT
7117	1,708,148.3869	1,626,252.6763	1330.20	ESMT
7118	1,708,136.0759	1,626,384.9013	1329.93	MATCH
7119	1,708,137.5427	1,626,459.0146	1330.09	MATCH
7120	1,708,138.9277	1,626,528.9978	1330.33	MATCH
7121	1,708,142.1329	1,626,690.9458	1331.44	MATCH
7122	1,708,142.5015	1,626,709.5708	1332.01	MATCH
7123	1,708,157.1916	1,626,694.3205	1329.60	ESMT
7124	1,708,310.0523	1,626,706.6229	1330.82	MATCH
7125	1,708,441.3729	1,626,704.3124	1331.83	MATCH
7126	1,708,522.3609	1,626,702.8875	1332.09	MATCH
7127	1,708,582.3520	1,626,701.8320	1332.07	MATCH
7128	1,708,642.3431	1,626,700.7765	1332.08	MATCH
7129	1,708,723.3311	1,626,699.3516	1331.95	MATCH



Baughman **COORDINATES**
 Street / SWS Improvements

Baughman Company, P.A. 315 Ellis St. Wichita, KS 67211 P 316-262-7271 F 316-262-0149
 ENGINEERING | SURVEYING | PLANNING | LANDSCAPE ARCHITECTURE

<small>PROJECT NUMBER 472-85421</small>	<small>DESIGN AEG</small>
<small>REVISIONS:</small>	<small>DRAWN JAK</small>
	<small>DATE 9/03/19</small>
	<small>SCALE Noted</small>
	<small>SHEET 24 OF 25</small>

C:\Projects\Siena Lakes 2nd_1805\F317\Engineering\Phase 2\Str_1904\250\STR PLANS.DWG