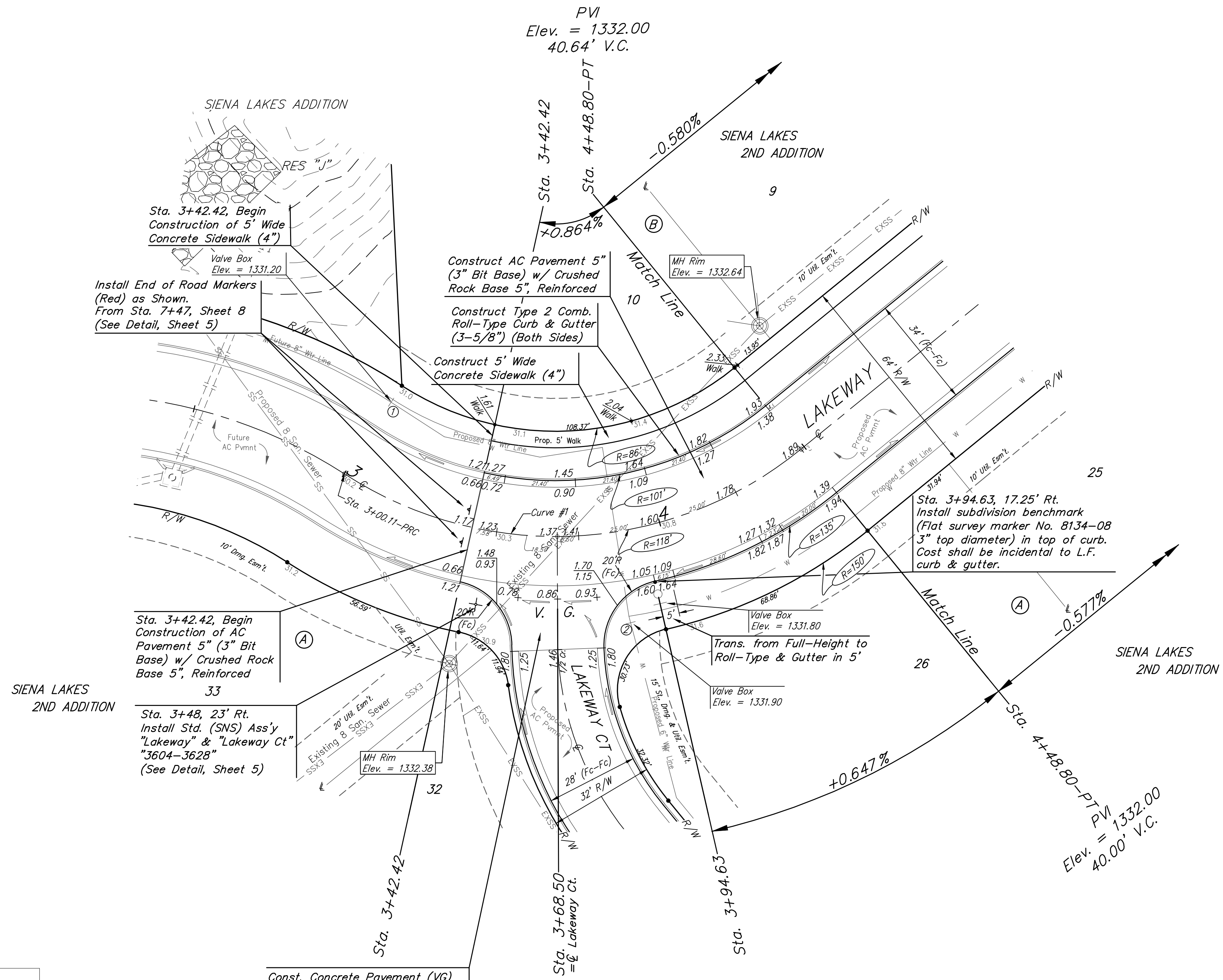
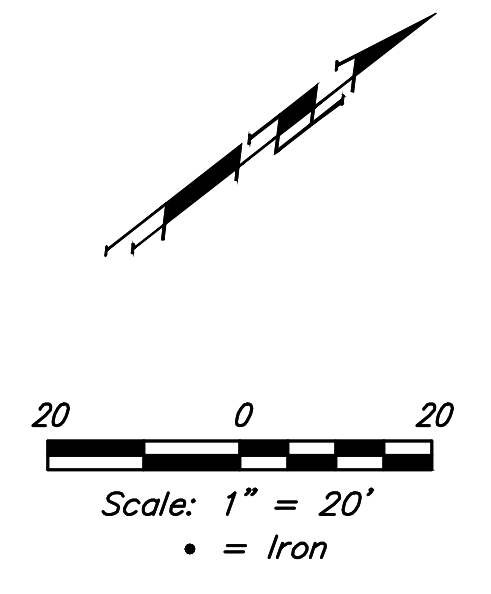


BENCHMARKS:
 Chiseled square at the end of the top of curb at the southeast corner of Ridge Port and 37th St N.
 Elev. = 1333.05 NAVD88

City of Wichita Benchmark Disk adjacent to fire hydrant, south end of south curb return at the intersection of Lakeway St & Lakeway Ct. (Lots 10-17, Block A) Siena Lakes 2nd Addition.
 Elev. = 1330.78 NAVD88

Chiseled square with "X" in the top of curb inlet adjacent to southeast corner of Lot 32, Block B, Siena Lakes 2nd Addition.
 Elev. = 1329.88 NAVD88



SIENA LAKES 2ND ADDITION

SIENA LAKES 2ND ADDITION

SIENA LAKES 2ND ADDITION

Curve #1
 Curve Data Based on Centerline

Station	Arc	Face Chord Lengths		Defl.	Total Defl.
		8' Left	8' Right		
3+00.11	-	-	-	0'00'00"	0'00'00"
3+25.00	24.89'	19.58'	30.11'	6'02'35"	6'02'35"
3+42.42	17.42'	13.72'	21.09'	4'13'45"	10'16'20"
3+50.00	7.58'	5.97'	9.18'	1'50'25"	12'06'45"
3+75.00	25.00'	19.67'	30.24'	6'04'11"	18'10'56"
3+94.63	19.63'	15.45'	23.76'	4'45'57"	22'56'53"
4+00.00	5.37'	4.23'	6.51'	1'18'14"	24'15'07"
4+25.00	25.00'	19.67'	30.24'	6'04'11"	30'19'18"
4+48.80	23.80'	18.73'	28.79'	5'46'41"	36'05'59"

Const. Concrete Pavement (VG)
 7" (Reinf) on Reinf. Crushed Rock
 Base 5" w/Monolithic Edge Curb.
 (6-5/8") (See Detail, Sheet 6.)

Street & Station	Location Description	Elevation
Lakeway 3+94.63, 17.25' Rt.	Adjacent to Fire Hydrant at North End of the North Return of Lakeway & Lakeway Ct (Lots 26-32, Block A)	
Lakeway 6+55.75, 17.25' Rt.	Adjacent to Fire Hydrant at North End of the North Return of Lakeway & Lakeway Ct (Lots 18-25, Block A)	

Roll type curb & gutter to be constructed on the pavement on this sheet.
 Top of curb elevation are given for full height curb.

		Siena Lakes 2nd Addition - Phase II	
		LAKEWAY Sta. 3+42.42 to Sta. 4+48.80	
Baughman Company, P.A. 315 Ellis St. Wichita, KS 67211 P 316-262-7271 F 316-262-0149 ENGINEERING SURVEYING PLANNING LANDSCAPE ARCHITECTURE			
PROJECT NUMBER 472-85421	DESIGN AEG	DRAWN JAK	
REVISIONS:	APPROVED	DATE 9/03/19	
	SCALE Noted	SHEET	
			7 OF 25