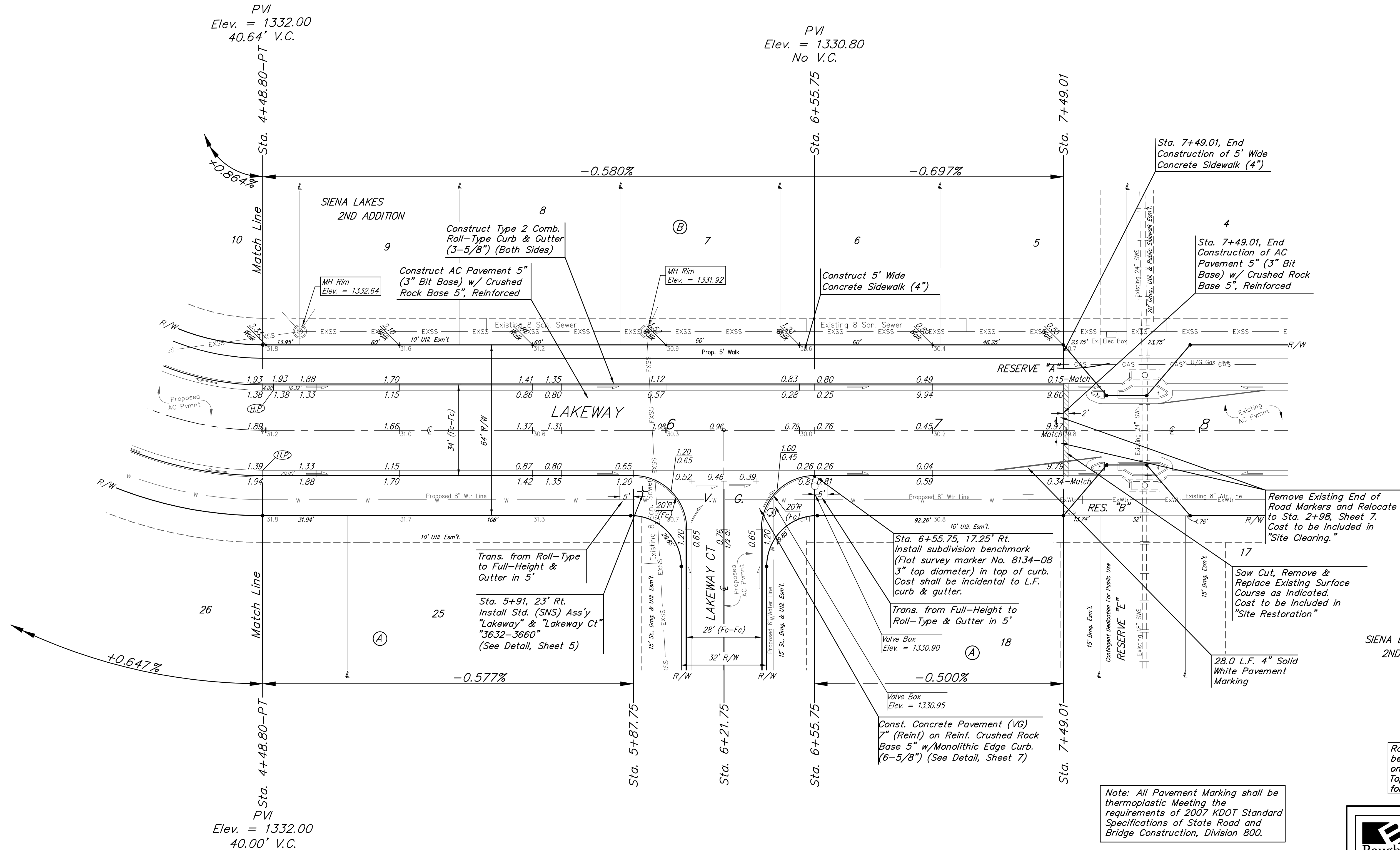
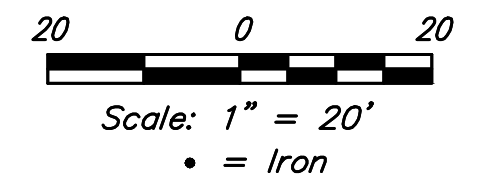


BENCHMARKS:
 Chiseled square at the end of the top of curb at the southeast corner of Ridge Port and 37th ST N.
 Elev. = 1333.05 NAVD88

City of Wichita Benchmark Disk adjacent to fire hydrant, south end of south curb return at the intersection of Lakeway ST & Lakeway Ct. (Lots 10-17, Block A) Siena Lakes 2nd Addition.
 Elev. = 1330.78 NAVD88

Chiseled square with "X" in the top of curb inlet adjacent to southeast corner of Lot 32, Block B, Siena Lakes 2nd Addition.
 Elev. = 1329.88 NAVD88



VALVE LOCATION TABLE

Valve Number	Baseline Station	Offset Distance	Offset Direction
1	3+00.11	26'	Lt.
2	3+86.49	28'	Rt.
3	6+40.22	28'	Rt.

Note: All Pavement Marking shall be thermoplastic Meeting the requirements of 2007 KDOT Standard Specifications of State Road and Bridge Construction, Division 800.

Roll type curb & gutter to be constructed on the pavement on this sheet.
 Top of curb elevation are given for full height curb.

	Siena Lakes 2nd Addition - Phase II	
	LAKEWAY	
Sta. 4+48.80 to Sta. 7+49.01		
Baughman Company, P.A. 315 Ellis St. Wichita, KS 67211 P 316-262-7271 F 316-262-0149 ENGINEERING SURVEYING PLANNING LANDSCAPE ARCHITECTURE		
PROJECT NUMBER 472-85421	DESIGN AEG	DRAWN JAK
REVISIONS:	APPROVED	DATE 9/03/19
	SCALE Noted	SHEET
8 OF 25		