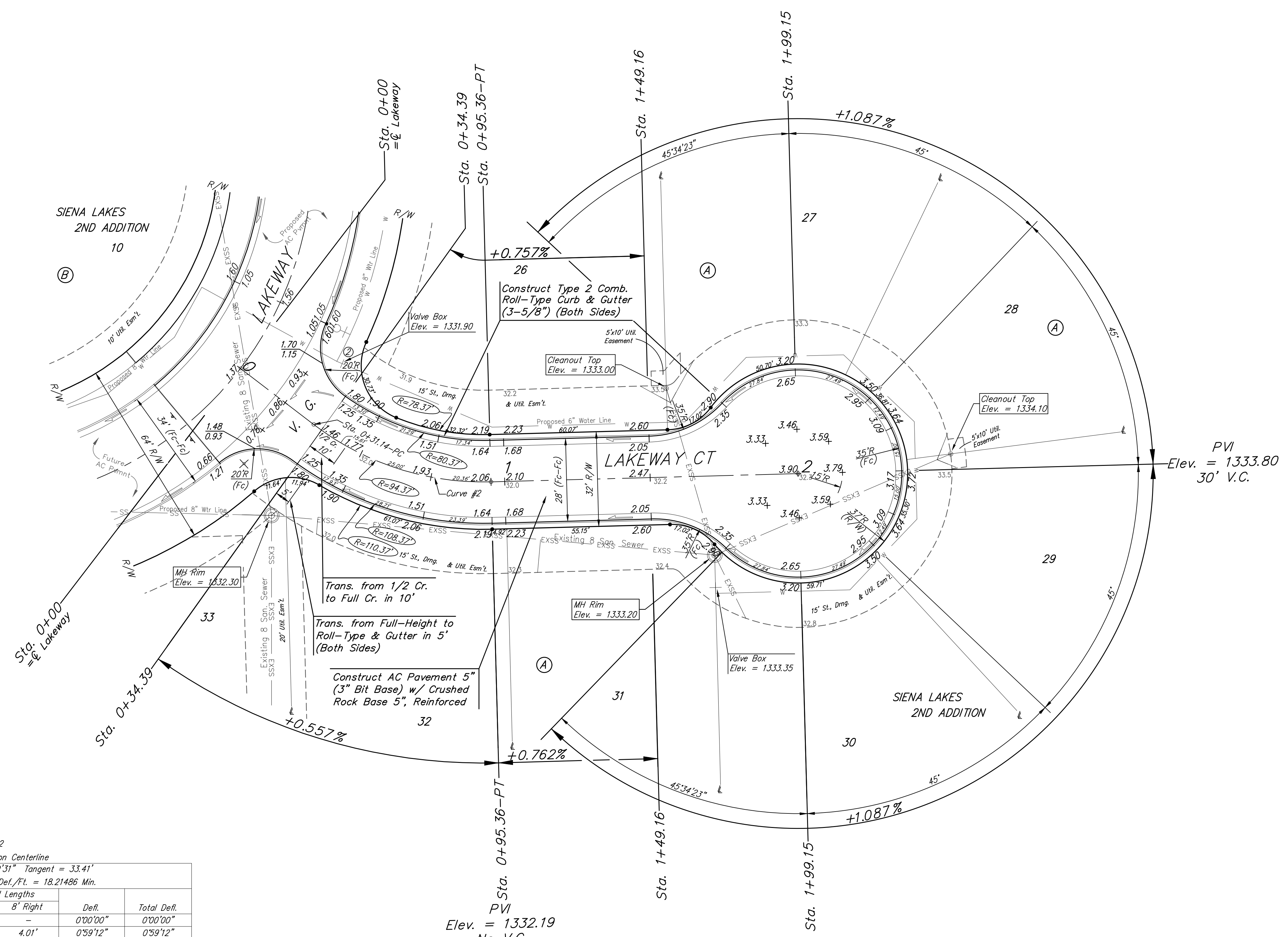
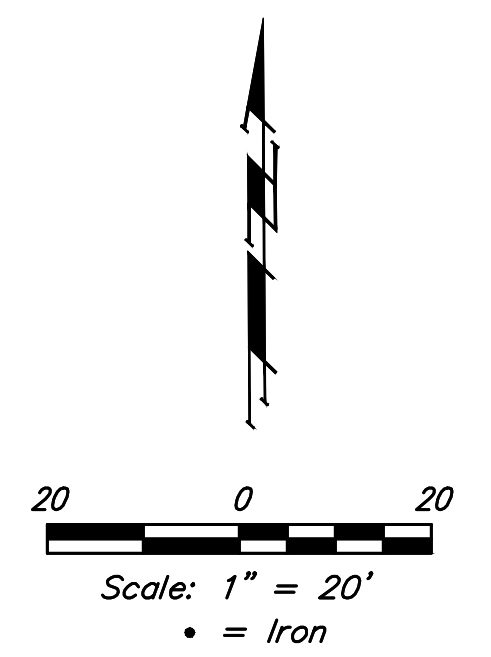


BENCHMARKS:
 Chiseled square at the end of the top of curb at the southeast corner of Ridge Port and 37th ST N.
 Elev. = 1333.05 NAVD88

City of Wichita Benchmark Disk adjacent to fire hydrant, south end of south curb return at the intersection of Lakeway ST & Lakeway Ct. (Lots 10-17, Block A) Siena Lakes 2nd Addition.
 Elev. = 1330.78 NAVD88

Chiseled square with "X" in the top of curb inlet adjacent to southeast corner of Lot 32, Block B, Siena Lakes 2nd Addition.
 Elev. = 1329.88 NAVD88



Curve #2
 Curve Data Based on Centerline
 Rad. = 94.37' Delta = 38°59'31" Tangent = 33.41'
 Arc = 64.22' L.C. = 62.99' Def./Ft. = 18.21486 Min.

Station	Arc	Face Chord Lengths		Defl.	Total Defl.
		B' Left	B' Right		
0+31.14	-	-	-	0'00"00"	0'00"00"
0+34.39	3.25'	2.49'	4.01'	0'59"12"	0'59"12"
0+50.00	15.61'	11.96'	19.23'	4'44"20"	5'43"32"
0+75.00	25.00'	19.12'	30.74'	7'35"22"	13'18"54"
0+95.36	20.36'	15.58'	25.06'	6'10"52"	19'29"46"

Roll type curb & gutter to be constructed on the pavement on this sheet.
 Top of curb elevation are given for full height curb.

Baughman Siena Lakes 2nd Addition - Phase II
LAKEWAY CT
 Lots 26-32, Block A

Baughman Company, P.A. 315 Ellis St. Wichita, KS 67211 P 316-262-7271 F 316-262-0149
 ENGINEERING | SURVEYING | PLANNING | LANDSCAPE ARCHITECTURE

PROJECT NUMBER: 472-85421 DESIGN: AEG DRAWN: JAK
 APPROVED: DATE: 9/03/19
 REVISIONS: SCALE: Noted SHEET: 9 OF 25