

# TIMBER LAKES ESTATES

AN ADDITION TO SEDGWICK COUNTY, KANSAS.



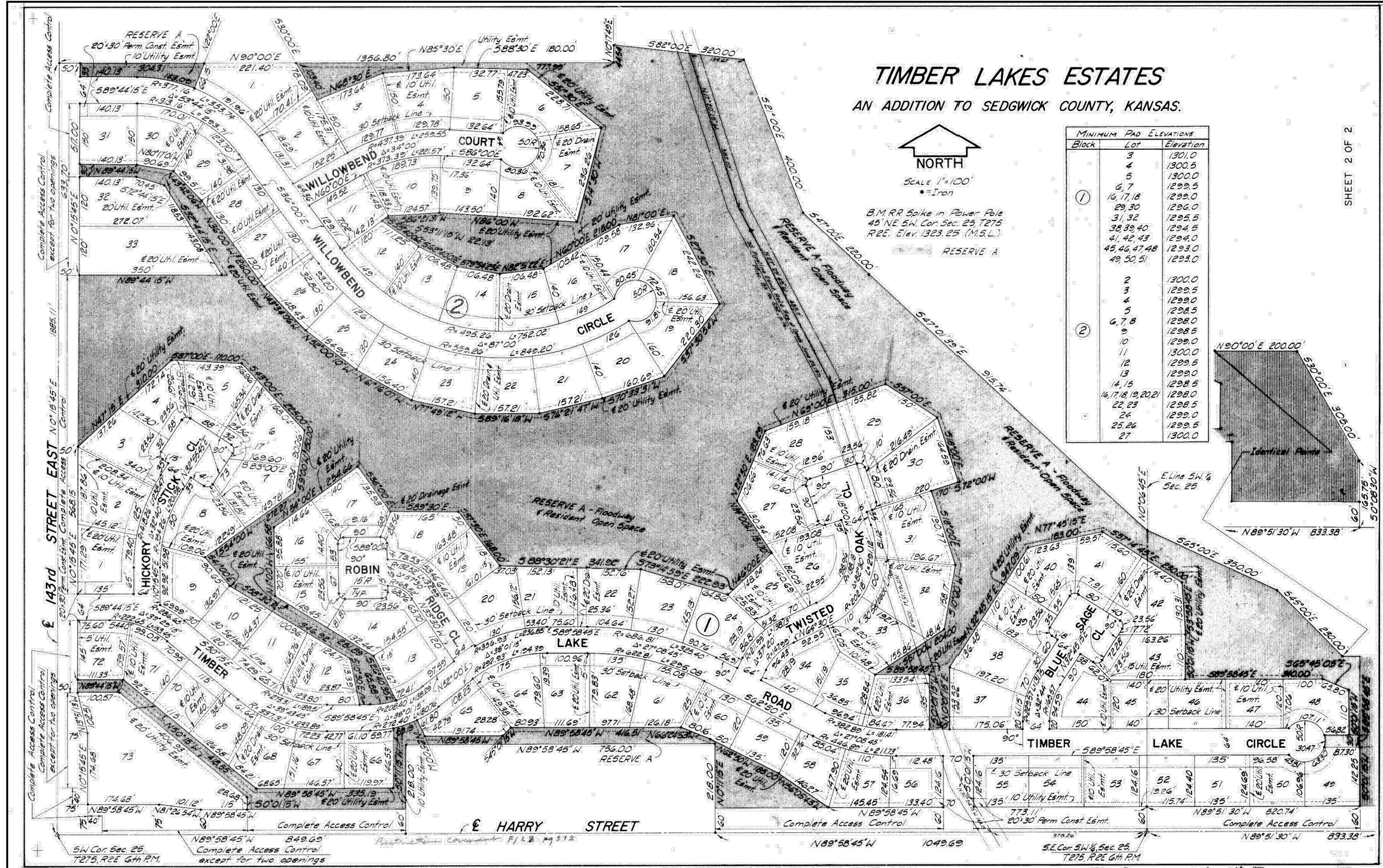
SCALE 1"=100'  
•=Iron

B.M. RR Spike in Power Pole  
45° NE SW Cor. Sec. 25 T27S  
R2E. Elev. 1323.25 (M.S.L.)

RESERVE A

MINIMUM PAD ELEVATIONS		
Block	Lot	Elevation
①	3	1301.0
	4	1300.5
	5	1300.0
	6, 7	1299.5
	16, 17, 18	1299.0
	29, 30	1299.0
	31, 32	1299.5
	38, 39, 40	1294.5
	41, 42, 43	1294.0
	45, 46, 47, 48	1293.0
49, 50, 51	1293.0	
②	2	1300.0
	3	1299.5
	4	1299.0
	5	1298.5
	6, 7, 8	1298.0
	9	1298.5
	10	1299.0
	11	1300.0
	12	1299.5
	13	1299.0
14, 15	1298.5	
16, 17, 18, 19, 20, 21	1298.0	
22, 23	1298.5	
24	1299.0	
25, 26	1299.5	
27	1300.0	

SHEET 2 OF 2



5-3 4-14 B

