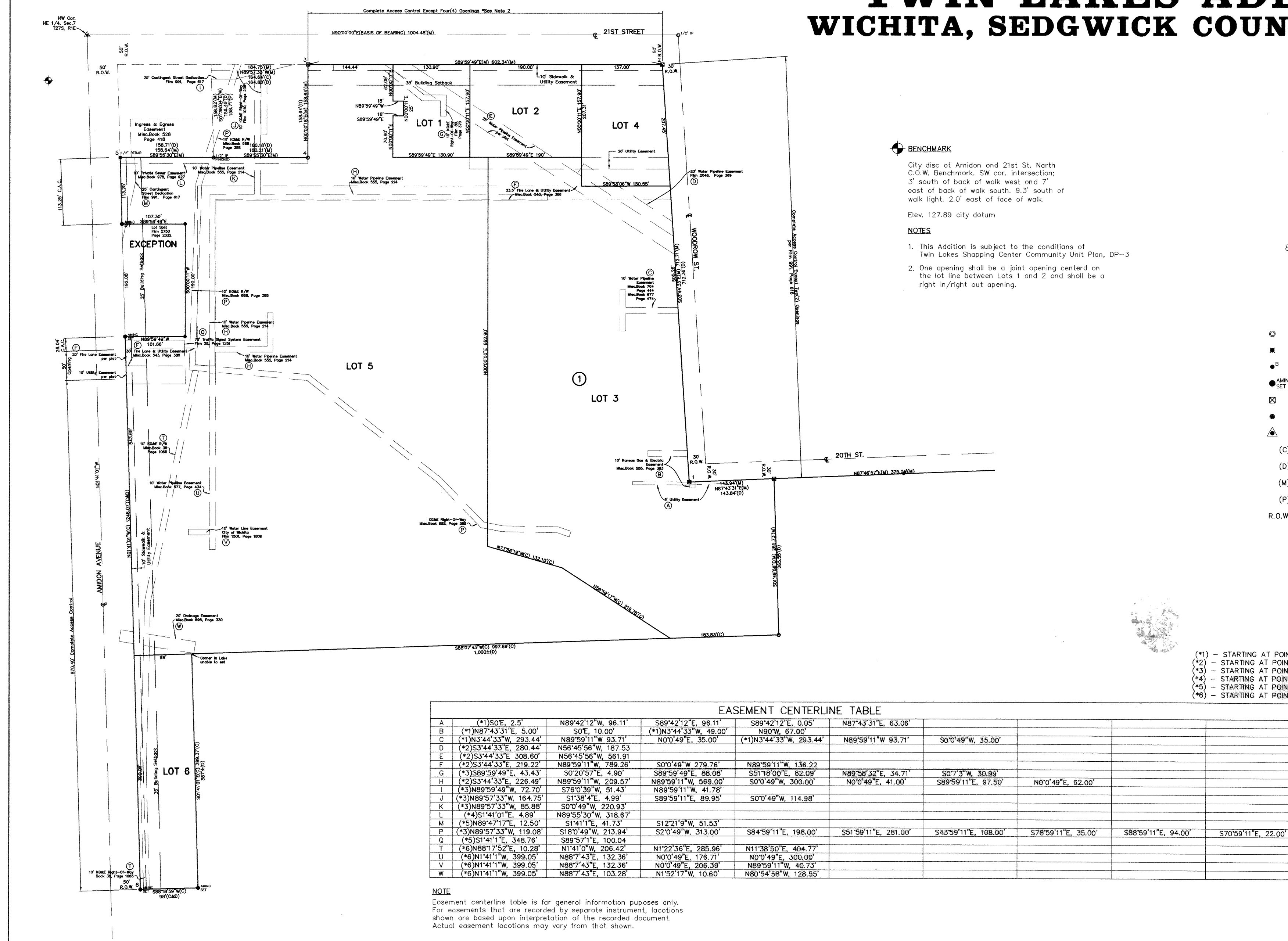
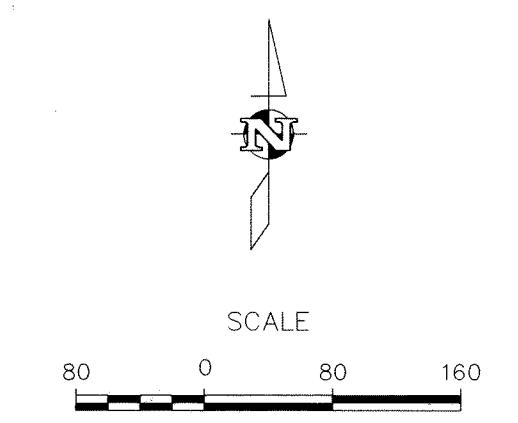


TWIN LAKES ADDITION WICHITA, SEDGWICK COUNTY, KANSAS



BENCHMARK
City disc of Amidon and 21st St. North
C.O.W. Benchmark, SW cor. intersection;
3' south of back of walk west and 7'
east of back of walk south, 9.3' south of
walk light, 2.0' east of face of walk.
Elev. 127.89 city datum

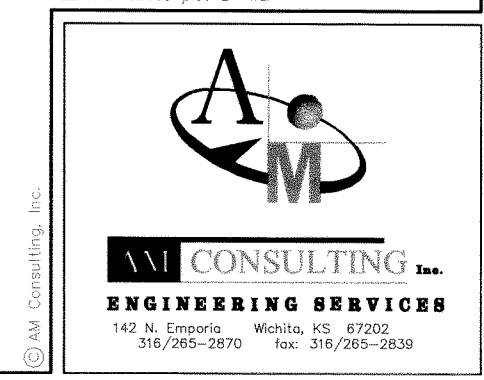


LEGEND

- = 1/2" Iron Pipe (found)
- = 1/2" Rebar (found)
- = 1/2" Rebar with Baughman cap (found)
- = 5/8" Rebar AMINC CLS #104 (set)
- ⊗ = "X" Out (found)
- = PK Nail (set)
- ⊕ = Section Corner
- (C) = Calculated
- (D) = Described
- (M) = Measured
- (P) = Plotted
- R.O.W. = Right-of-Way

- (*)1 - STARTING AT POINT 1
- (*)2 - STARTING AT POINT 2
- (*)3 - STARTING AT POINT 3
- (*)4 - STARTING AT POINT 4
- (*)5 - STARTING AT POINT 5
- (*)6 - STARTING AT POINT 6

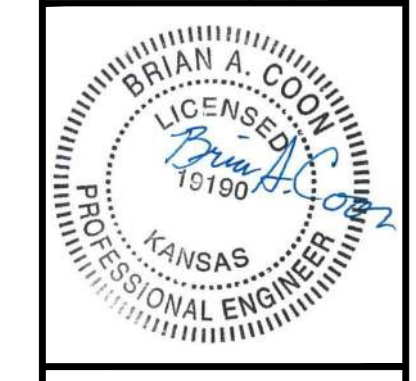
PAGE 2 OF 2



This digital plat record accurately reproduces in all details the original plat filed with the Sedgwick County Register of Deeds. Digitized under the supervision of Register of Deeds Bill Meek by Sedgwick County Geographic Information Systems.

Bill Meek, Register of Deeds
Digitized rendition of original signature

		BAC	MLT	BAC
		BAC	MLT	EAM
		BAC	MLT	DSN
		BAC	MLT	DWN
		BAC	MLT	CHK



BRIAN A. COON
ENGINEER
KS # 19190

200 N. EMPORIA, SUITE 100
CHIEF OF OFFICE
WICHITA, KANSAS 67202-4400-4309
PH: (316) 265-2870
www.kawvalley.com | www.kveing.com

KAW VALLEY ENGINEERING

KAW VALLEY ENGINEERING, INC. IS AUTHORIZED TO OFFER ENGINEERING SERVICES IN THE STATE OF KANSAS UNDER CERTIFICATE OF AUTHORIZATION # E-113. EXPIRES 12/31/20



TWIN LAKES TURN LANE
AMIDON AVE
WICHITA, KS

TWIN LAKES TURN LANE
PLATS

PROJ. NO.	0221
DESIGNER	BAC
CFN	MLT
SHEET	0221STDET
12 OF 13	REV 0