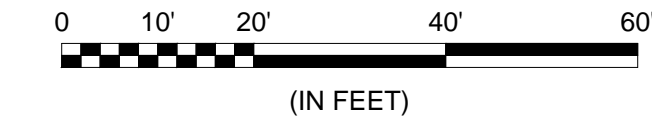
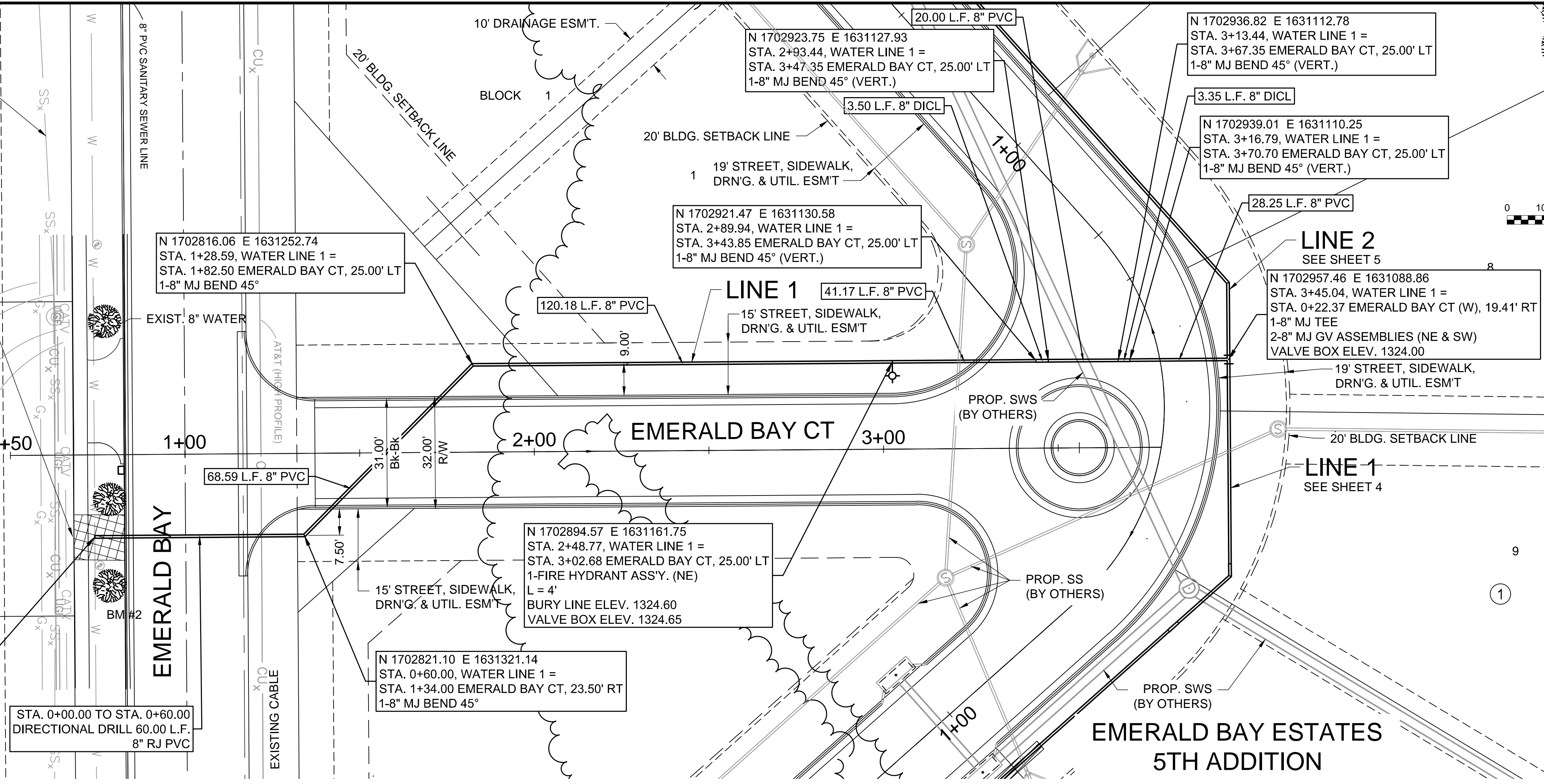


File: L:\2019\19T41004 - Emerald Bay 5th Add Ph 1\Drawings\C3D\Water\Water - (1).dwg Last Save: 8/6/2019 11:20 AM Last saved by: DRSandrich
 Last plotted by: Sandrich, Dairy R Plot Date: 8/6/2019 11:32 AM Plotter used: None

EMERALD BAY ESTATES ADDITION

CONTRACTOR SHALL RESTORE THIS AREA TO PRE-CONSTRUCTION CONDITIONS INCLUDING REPLACING SIDEWALK, SOD, AND/OR ANY SPRINKLERS. PROTECT TREES FROM DAMAGE. SUBSIDIARY TO BID ITEM FOR SITE RESTORATION.

N 1702781.90 E 1631366.57
 STA. 0+00.00, WATER LINE 1 =
 STA. 0+74.00 EMERALD BAY CT, 23.50' RT
 CONNECT TO EXIST. 8" MAIN
 * 1-8" TAPPING VALVE
 * 1-8"x8" TAPPING SLEEVE
 ** 1-6" VALVE BOX ASS'Y.
 VALVE BOX ELEV. 1329.40
 * SUPPLIED AND INSTALLED BY CITY OF WICHITA WATER DEPT.
 ** SUPPLIED BY C.O.W.
 INSTALLED BY CONTRACTOR



© 2019 GARVER, LLC
 THIS DOCUMENT, ALONG WITH THE IDEAS AND DESIGNS CONVEYED HEREIN, SHALL BE CONSIDERED INSTRUMENTS OF PROFESSIONAL SERVICE AND ARE PROPERTY OF GARVER, LLC. ANY USE, REPRODUCTION, OR DISTRIBUTION OF THIS DOCUMENT, ALONG WITH THE IDEAS AND DESIGN CONTAINED HEREIN, IS PROHIBITED UNLESS AUTHORIZED IN WRITING BY GARVER, LLC OR EXPLICITLY ALLOWED IN THE GOVERNING PROFESSIONAL SERVICES AGREEMENT FOR THIS WORK.

8535 E. 21st St. N.
 Suite 130
 Wichita, KS 67206
 (316) 264-8008



REV.	DATE	DESCRIPTION	BY



CITY OF WICHITA
 WICHITA, KANSAS
 EMERALD BAY 5th ADD.
 WATER

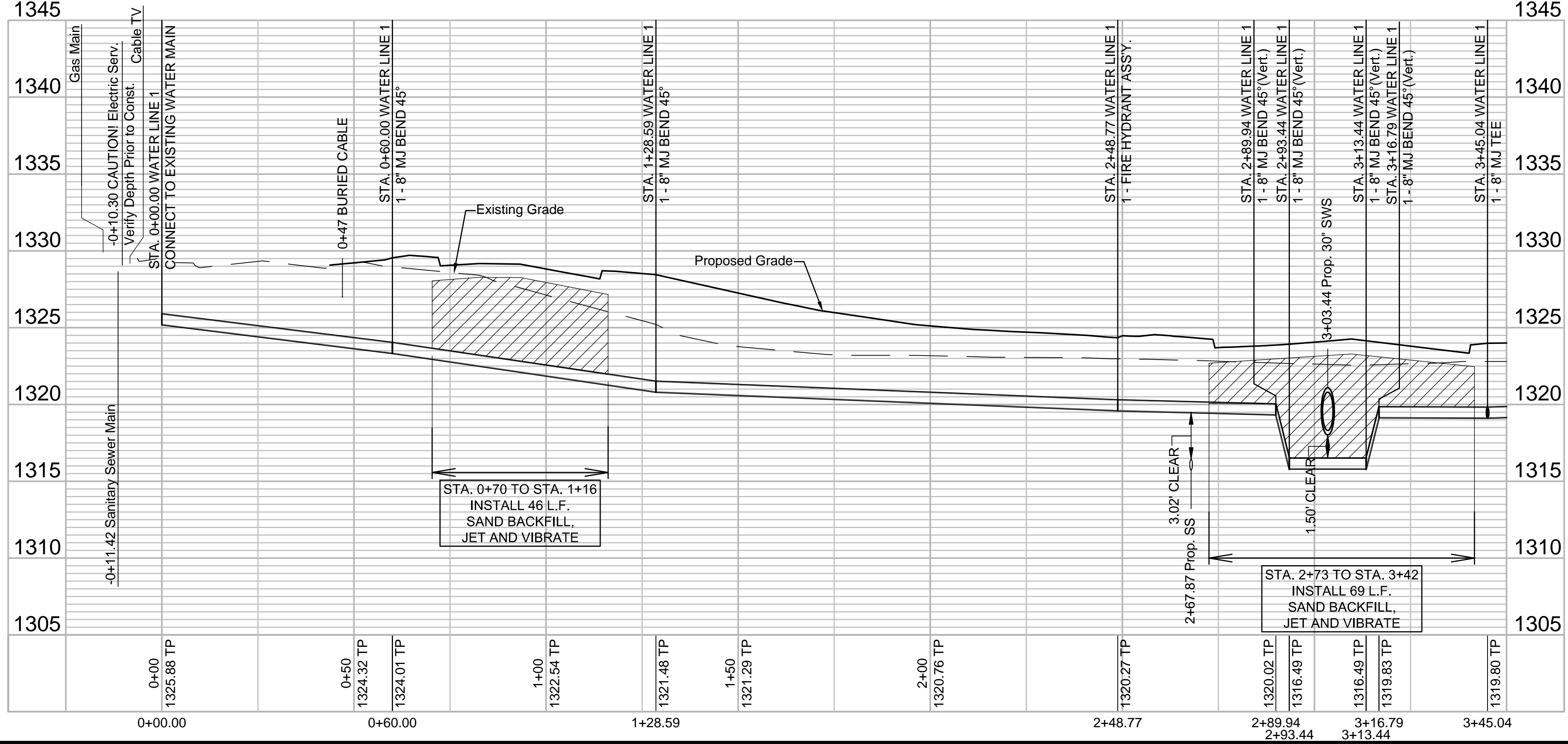
WATERLINE 1
 (1 of 2)

JOB NO.: 19T41004
 DATE: JUNE 2019
 DESIGNED BY: EJG
 DRAWN BY: DRS

BAR IS ONE INCH ON ORIGINAL DRAWING
 IF NOT ONE INCH ON THIS SHEET, ADJUST SCALES ACCORDINGLY.

DRAWING NUMBER

SHEET NUMBER **3** OF **14**



**TREES ARE TO BE REMOVED UNDER THE SANITARY SEWER CONTRACT.