



© 2019 GARVER, LLC  
 THIS DOCUMENT, ALONG WITH THE IDEAS AND DESIGNS CONVEYED HEREIN, SHALL BE CONSIDERED INSTRUMENTS OF PROFESSIONAL SERVICE AND ARE PROPERTY OF GARVER, LLC. ANY USE, REPRODUCTION, OR DISTRIBUTION OF THIS DOCUMENT, ALONG WITH THE IDEAS AND DESIGN CONTAINED HEREIN, IS PROHIBITED UNLESS AUTHORIZED IN WRITING BY GARVER, LLC OR EXPLICITLY ALLOWED IN THE GOVERNING PROFESSIONAL SERVICES AGREEMENT FOR THIS WORK.

8535 E. 21st St. N.  
 Suite 130  
 Wichita, KS 67206  
 (316) 264-8008



| REV. | DATE | DESCRIPTION | BY |
|------|------|-------------|----|
|      |      |             |    |
|      |      |             |    |
|      |      |             |    |



CITY OF WICHITA  
 WICHITA, KANSAS  
 EMERALD BAY 5th ADD.  
 WATER

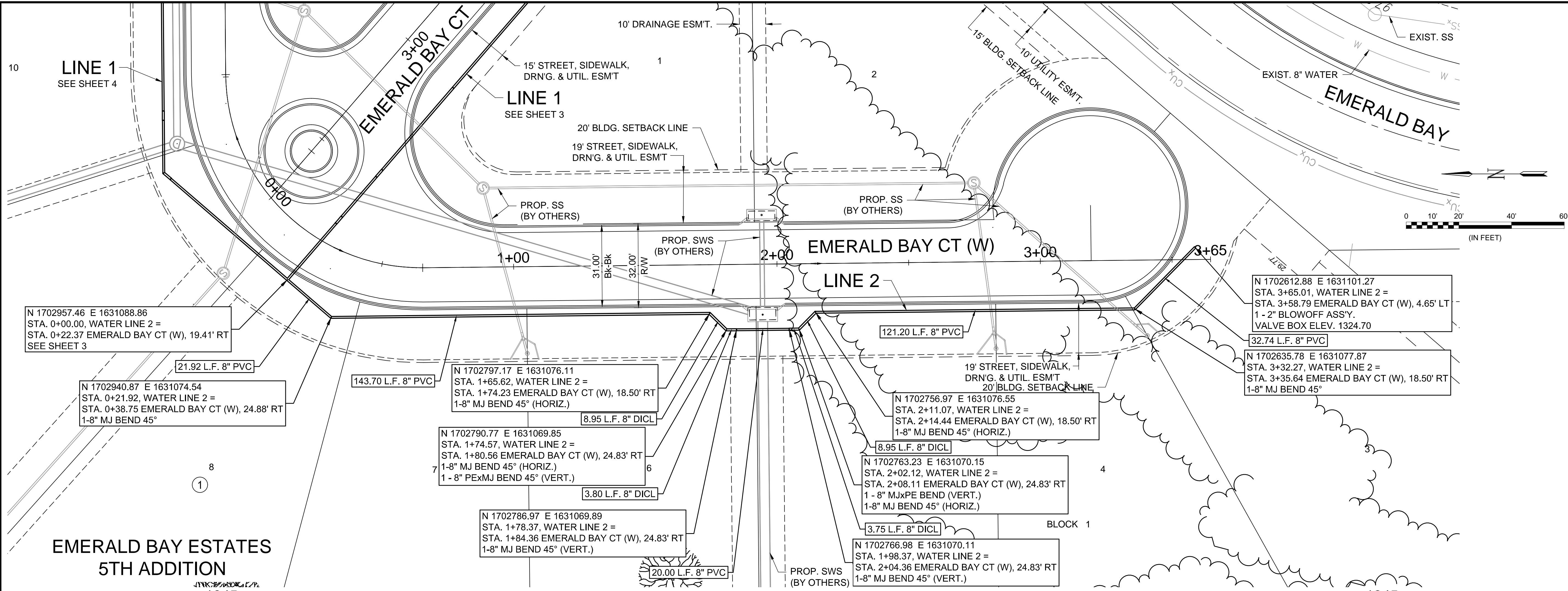
WATERLINE 2

JOB NO.: 19T41004  
 DATE: JUNE 2019  
 DESIGNED BY: EJG  
 DRAWN BY: DRS

BAR IS ONE INCH ON ORIGINAL DRAWING  
 IF NOT ONE INCH ON THIS SHEET, ADJUST SCALES ACCORDINGLY.

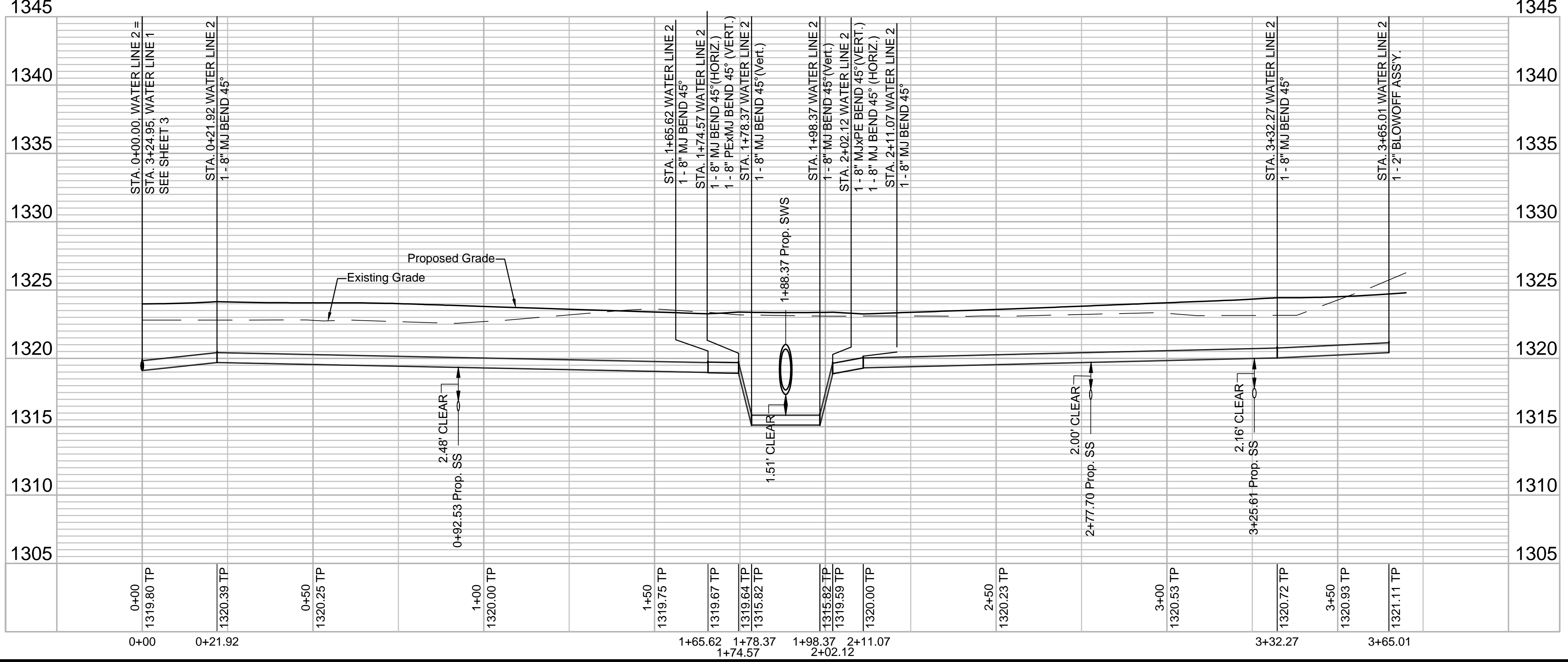
DRAWING NUMBER

SHEET NUMBER **5** OF **14**



**EMERALD BAY ESTATES  
 5TH ADDITION**

\*\*TREES ARE TO BE REMOVED UNDER THE SANITARY SEWER CONTRACT.



File: L:\2019\19T41004 - Emerald Bay 5th Add Ph 1\Drawings\CSD\Water\Water - (3).dwg Last Save: 6/6/2019 11:25 AM Last saved by: DRS\andrich  
 Last plotted by: Standrich, Daryl R. Plot Style: --- Plot Scale: 1:2.5849 Plot Date: 6/6/2019 11:33 AM Plotter used: None