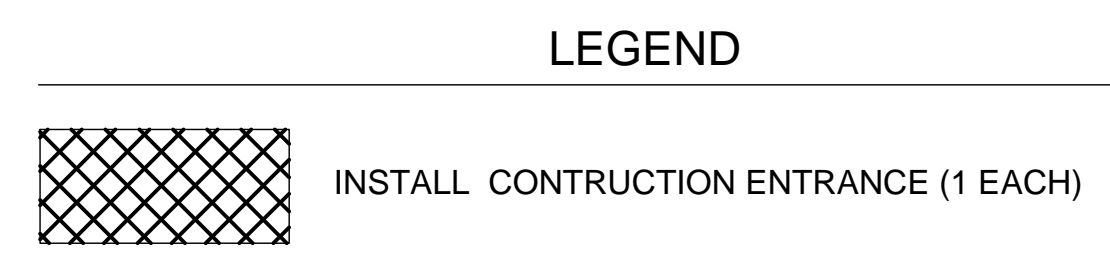
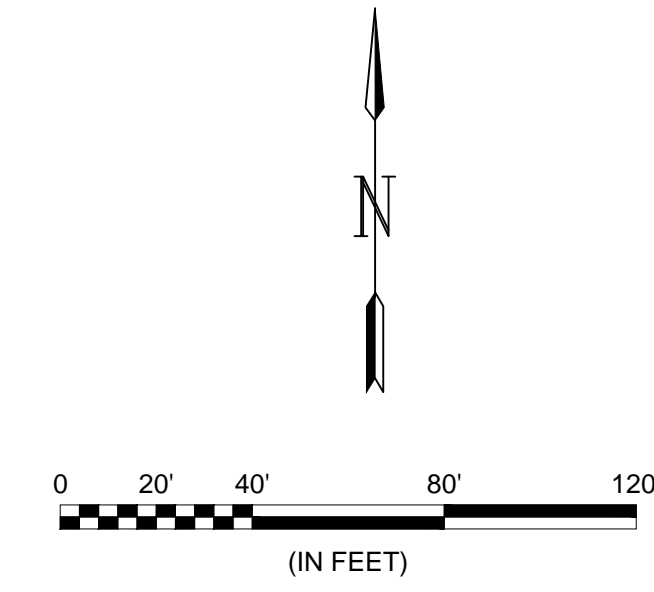
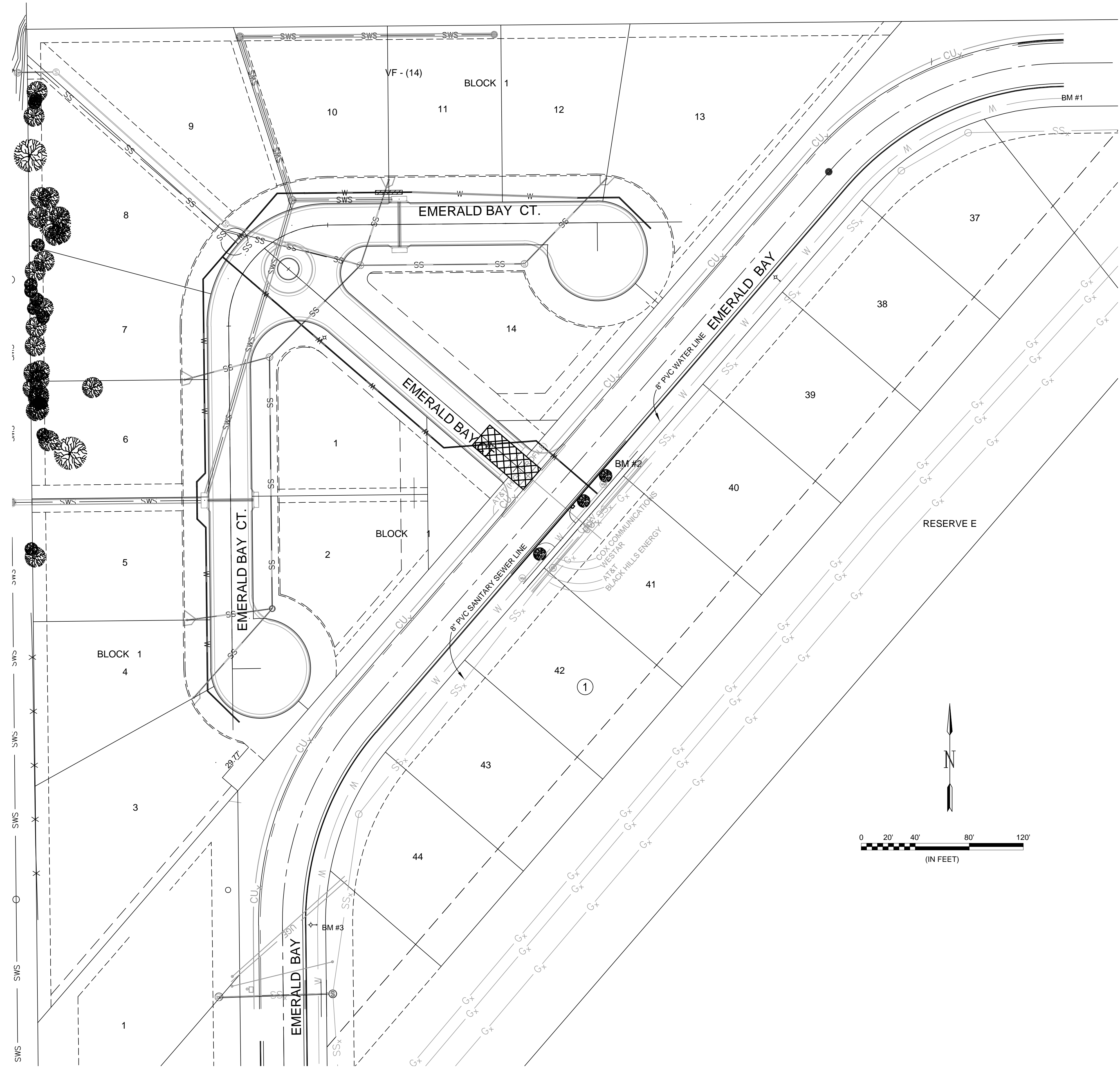


File: L:\2019\19T41004 - Emerald Bay 5th Add Ph 1\Drawings\CSD\19T41004-EROSION CONTROL.dwg Last Save: 6/6/2019 11:31 AM Last saved by: DRS\standrich  
 Last plotted by: Standrich, Dairy R Plot Style: --- Plot Scale: 1:2,5849 Plot Date: 6/6/2019 11:34 AM Plotter Used: None



© 2019 GARVER, LLC  
 THIS DOCUMENT, ALONG WITH THE IDEAS AND DESIGNS CONVEYED HEREIN, SHALL BE CONSIDERED INSTRUMENTS OF PROFESSIONAL SERVICE AND ARE PROPERTY OF GARVER, LLC. ANY USE, REPRODUCTION, OR DISTRIBUTION OF THIS DOCUMENT, ALONG WITH THE IDEAS AND DESIGN CONTAINED HEREIN, IS PROHIBITED UNLESS AUTHORIZED IN WRITING BY GARVER, LLC OR EXPLICITLY ALLOWED IN THE GOVERNING PROFESSIONAL SERVICES AGREEMENT FOR THIS WORK.

8535 E. 21st St. N.  
 Suite 130  
 Wichita, KS 67206  
 (316) 264-8008



REV.	DATE	DESCRIPTION	BY



CITY OF WICHITA  
 WICHITA, KANSAS  
 EMERALD BAY 5th ADD.  
 WATER

**EROSION CONTROL PLAN**

JOB NO.: 19T41004  
 DATE: JUNE 2019  
 DESIGNED BY: EJJ  
 DRAWN BY: DRS

BAR IS ONE INCH ON ORIGINAL DRAWING  
 IF NOT ONE INCH ON THIS SHEET, ADJUST SCALES ACCORDINGLY.

DRAWING NUMBER

SHEET NUMBER **8** OF **14**