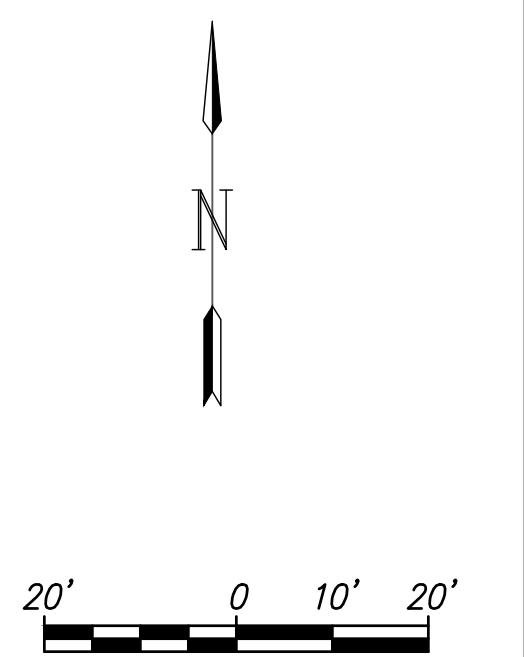
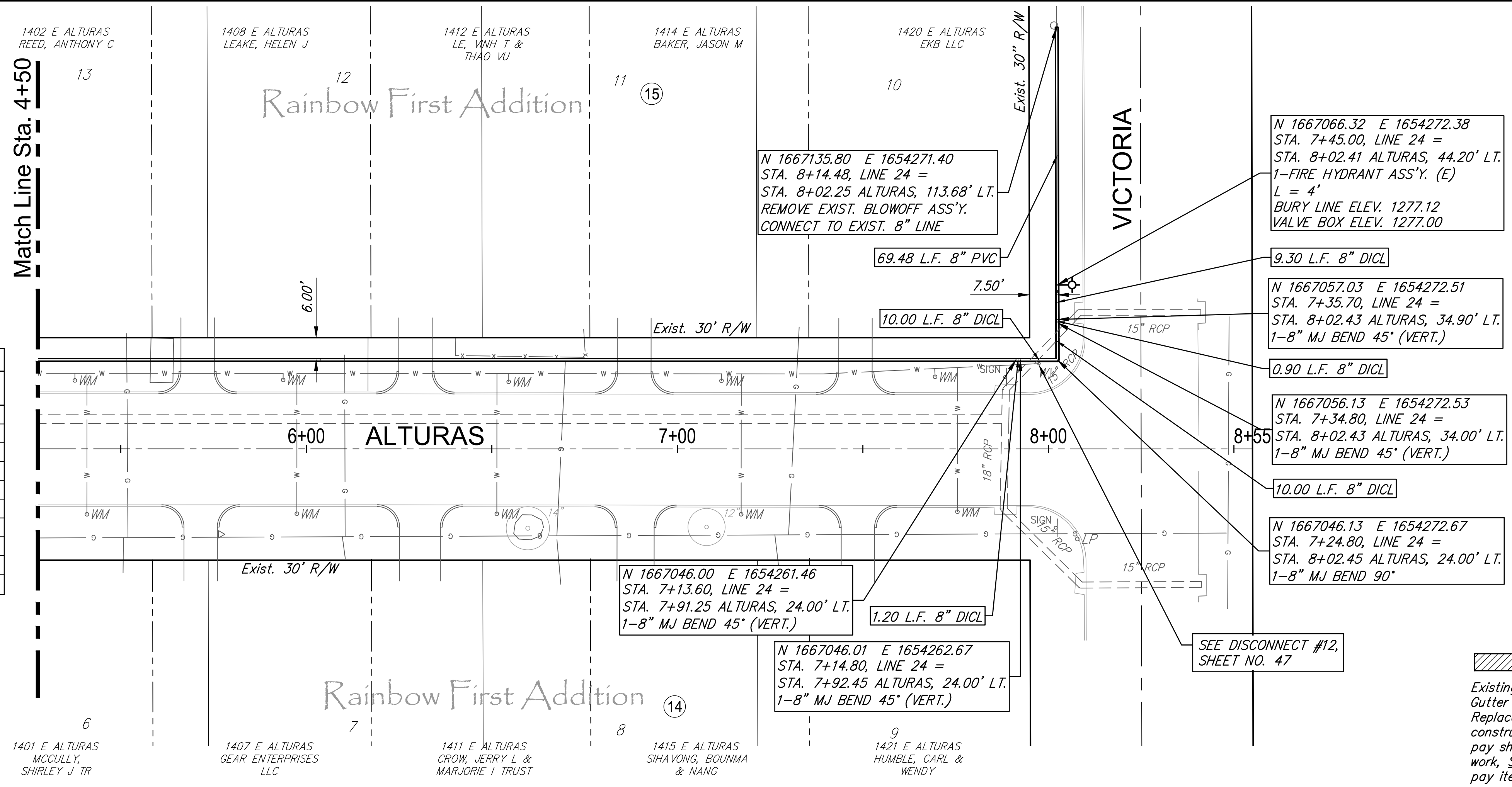
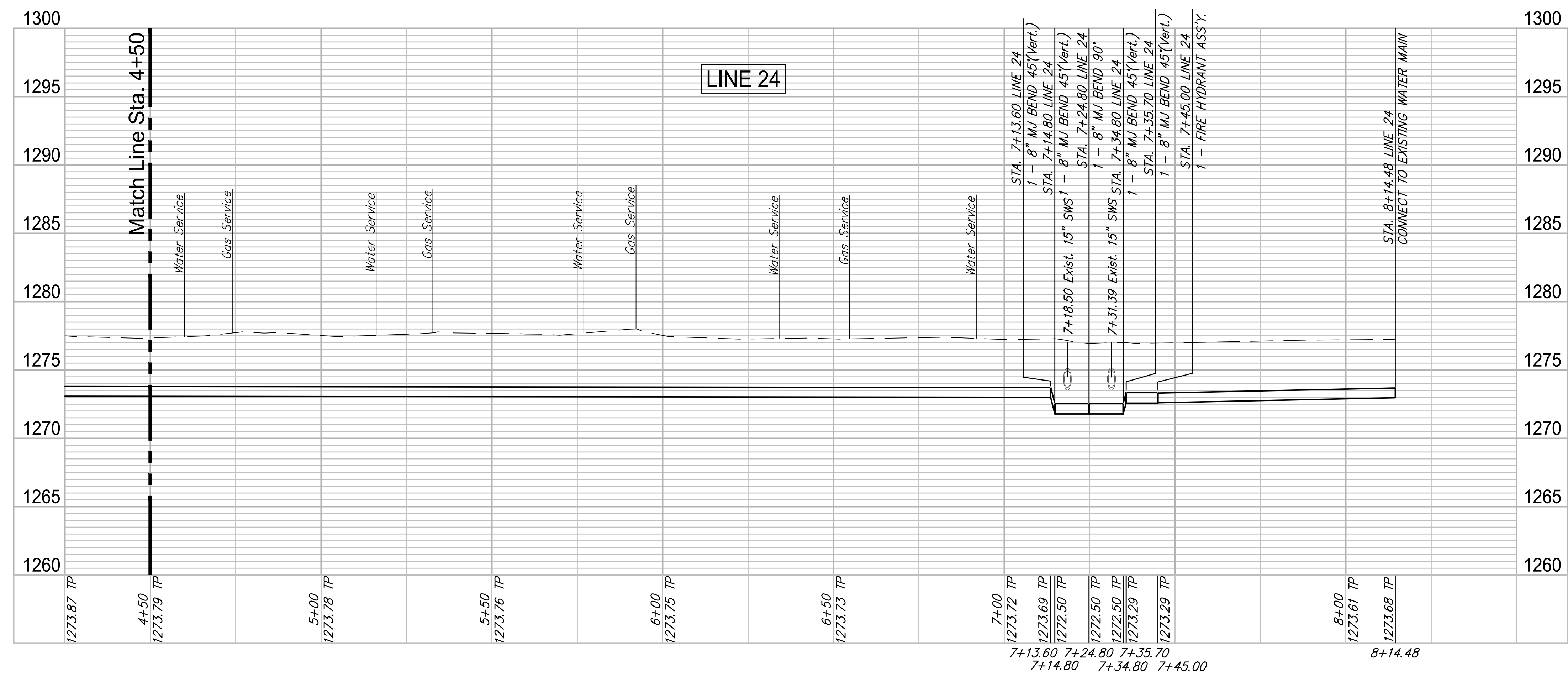


WATER METER SUMMARY				
BL Station	Lt./Rt.	Service (Long or Short)	Address	As Built
5+38	Lt.	Short	1402 E. ALTURAS	
5+41	Rt.	Long	1401 E. ALTURAS	
5+94	Lt.	Short	1408 E. ALTURAS	
5+97	Rt.	Long	1407 E. ALTURAS	
6+51	Rt.	Long	1411 E. ALTURAS	
6+55	Lt.	Short	1412 E. ALTURAS	
7+12	Lt.	Short	1414 E. ALTURAS	
7+17	Rt.	Long	1415 E. ALTURAS	
7+69	Lt.	Short	1420 E. ALTURAS	
7+75	Rt.	Long	1421 E. ALTURAS	



SEE DISCONNECT #12, SHEET NO. 47

Existing Pavement, Curb and Gutter to be Removed and Replaced as necessary for construction. No additional pay shall be made for this work, Subsidiary to other pay items.



PROJECT NUMBER: 448-90721  
 PROJECT TITLE: LINE 24 - Alturas  
 DESIGN: CMB / RA  
 DRAWN: DRS / RA  
 REVIEW: 5-24-2017  
 DATE: 4/2/2018  
 GARVER INC. 16264701  
 20 OF 53  
 © Copyright 2018, Garver

**ROSE MARIE WATER - Part B**  
**Alturas - Line 24 ( 2 of 2 )**  
 Wichita, Kansas



GARVER  
 924 N. MAIN  
 WICHITA, KS 67203  
 316.264.8000  
 WWW.GARVERUSA.COM

F:\Projects\Projects 4700-4799\4701W (Rose Marie waterline replacement)\LINE 24 - Alturas.dwg