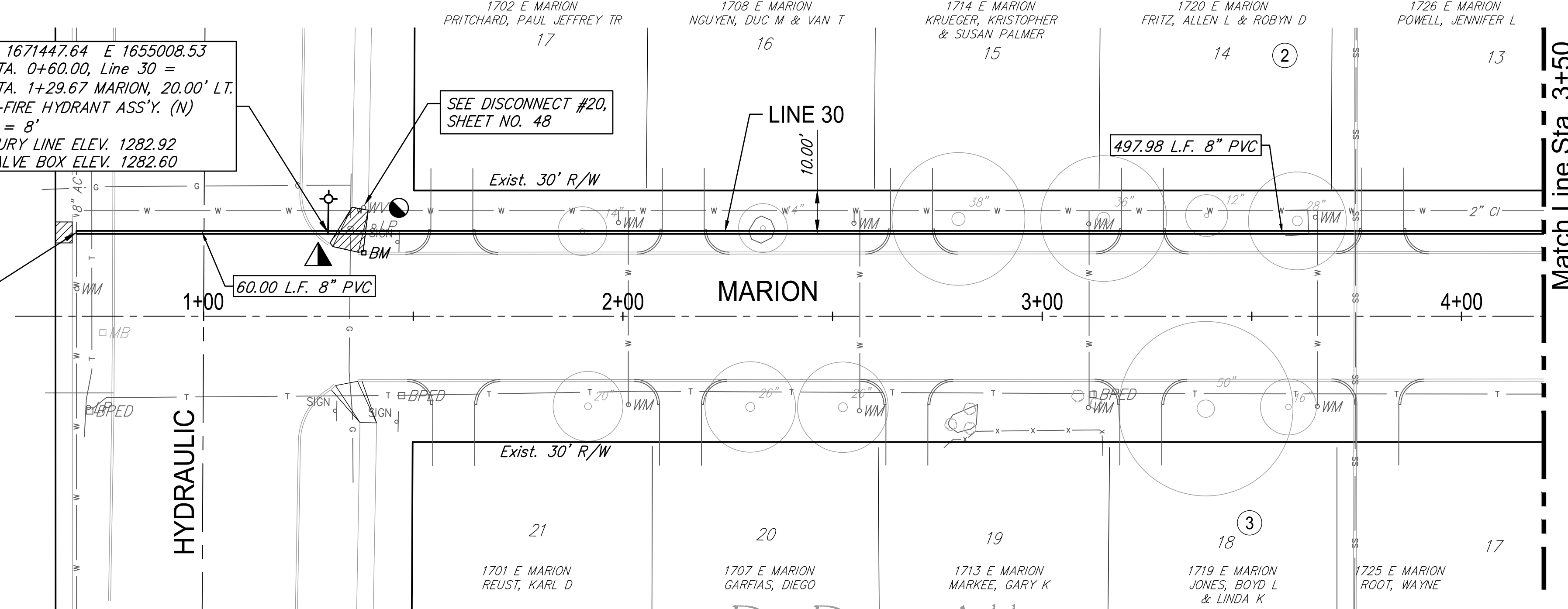


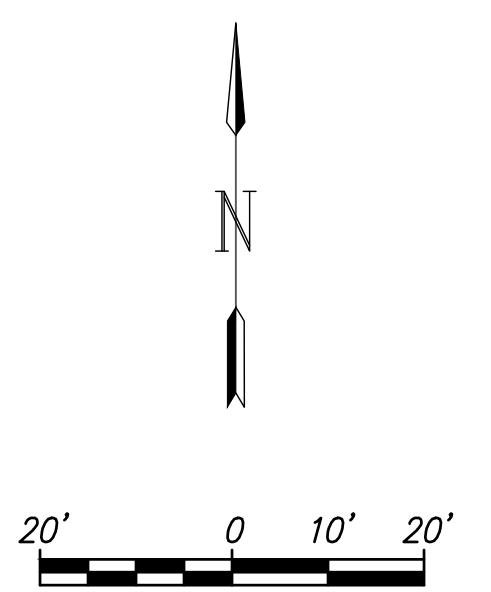
N 1671446.58 E 1654948.54
 STA. 0+00.00, Line 30 =
 STA. 0+69.67 MARION, 20.00' LT.
 CONNECT TO EXIST. 8" MAIN
 * 1-8" TAPPING VALVE
 * 1-8"x8" TAPPING SLEEVE
 ** 1-6" VALVE BOX ASS'Y.
 VALVE BOX ELEV. 1282.90
 * SUPPLIED AND INSTALLED BY
 CITY OF WICHITA WATER DEPT.
 ** SUPPLIED BY C.O.W.
 INSTALLED BY CONTRACTOR

N 1671447.64 E 1655008.53
 STA. 0+60.00, Line 30 =
 STA. 1+29.67 MARION, 20.00' LT.
 1-FIRE HYDRANT ASS'Y. (N)
 L = 8'
 BURY LINE ELEV. 1282.92
 VALVE BOX ELEV. 1282.60

SEE DISCONNECT #20,
 SHEET NO. 48



Match Line Sta. 3+50



- Replace Wheel Chair Ramp
- Contractor to coordinate with Westar to support pole during construction.

Existing Pavement, Curb and Gutter to be Removed and Replaced as necessary for construction. No additional pay shall be made for this work, Subsidiary to other pay items.

WATER METER SUMMARY				
BL Station	Lt./Rt.	Service (Long or Short)	Address	As Built
1+99	Lt.	Short	1702 MARION	
2+01	Rt.	Long	1701 MARION	
2+55	Lt.	Short	1708 MARION	
2+56	Rt.	Long	1707 MARION	
3+11	Lt.	Short	1714 MARION	
3+11	Rt.	Long	1713 MARION	
3+65	Lt.	Short	1720 MARION	
3+66	Rt.	Long	1719 MARION	



GARVER
 624 N. MAIN
 WICHITA, KS 67203
 316.264.8000
 WWW.GARVERUSA.COM

REVIEW: 5-24-2017
 DATE: 4/2/2018
 DESIGN: CMB / RA
 DRAWN: DRS / RA
 PROJECT NUMBER: 448-30721
 DRAWING FILE: 4701W Engineering Base Area 2

ROSE MARIE WATER - Part B
 Marion - Line 30 (1 of 2)
 Wichita, Kansas

GARVER JOB NO. 16264701
 SHEET 28 OF 53
 © Copyright 2018, Garver

