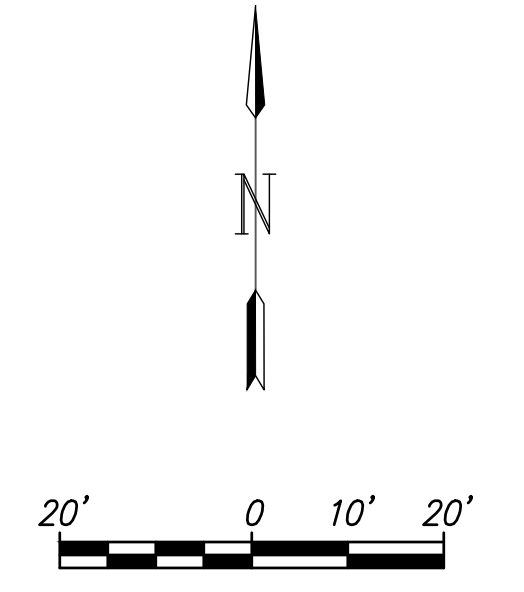
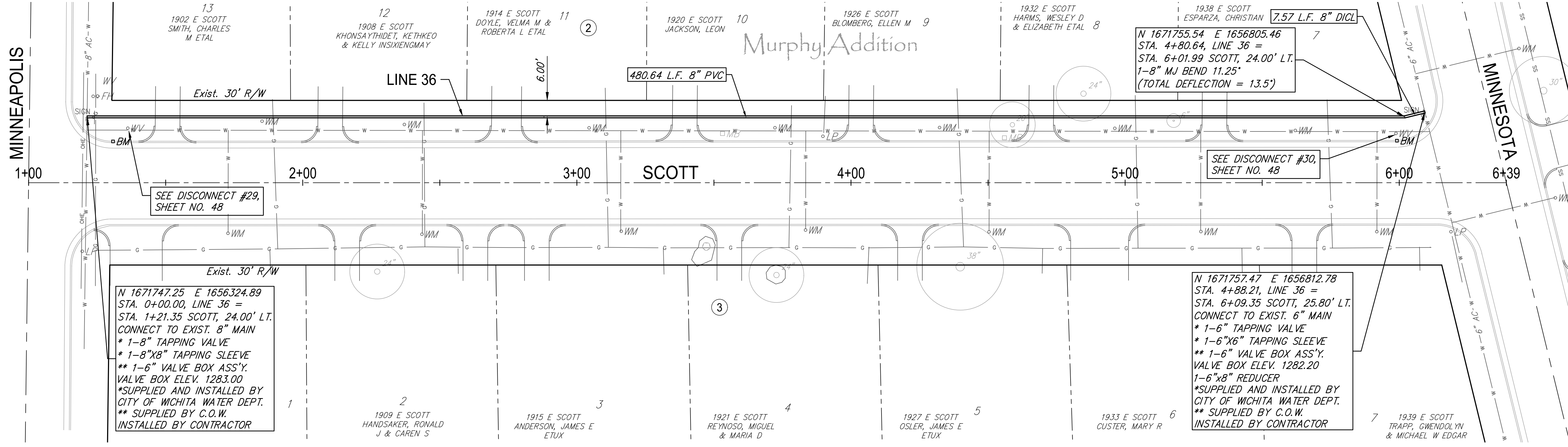


MINNEAPOLIS

MINNESOTA

Murphy Addition



Existing Pavement, Curb and Gutter to be Removed and Replaced as necessary for construction. No additional pay shall be made for this work, *Subsidiary* to other pay items.

N 1671747.25 E 1656324.89
STA. 0+00.00, LINE 36 =
STA. 1+21.35 SCOTT, 24.00' LT.
CONNECT TO EXIST. 8" MAIN
* 1-8" TAPPING VALVE
* 1-8"x8" TAPPING SLEEVE
** 1-6" VALVE BOX ASS'Y.
VALVE BOX ELEV. 1283.00
* SUPPLIED AND INSTALLED BY
CITY OF WICHITA WATER DEPT.
** SUPPLIED BY C.O.W.
INSTALLED BY CONTRACTOR

N 1671755.54 E 1656805.46
STA. 4+80.64, LINE 36 =
STA. 6+01.99 SCOTT, 24.00' LT.
1-8" MJ BEND 11.25"
(TOTAL DEFLECTION = 13.5')

SEE DISCONNECT #30,
SHEET NO. 48

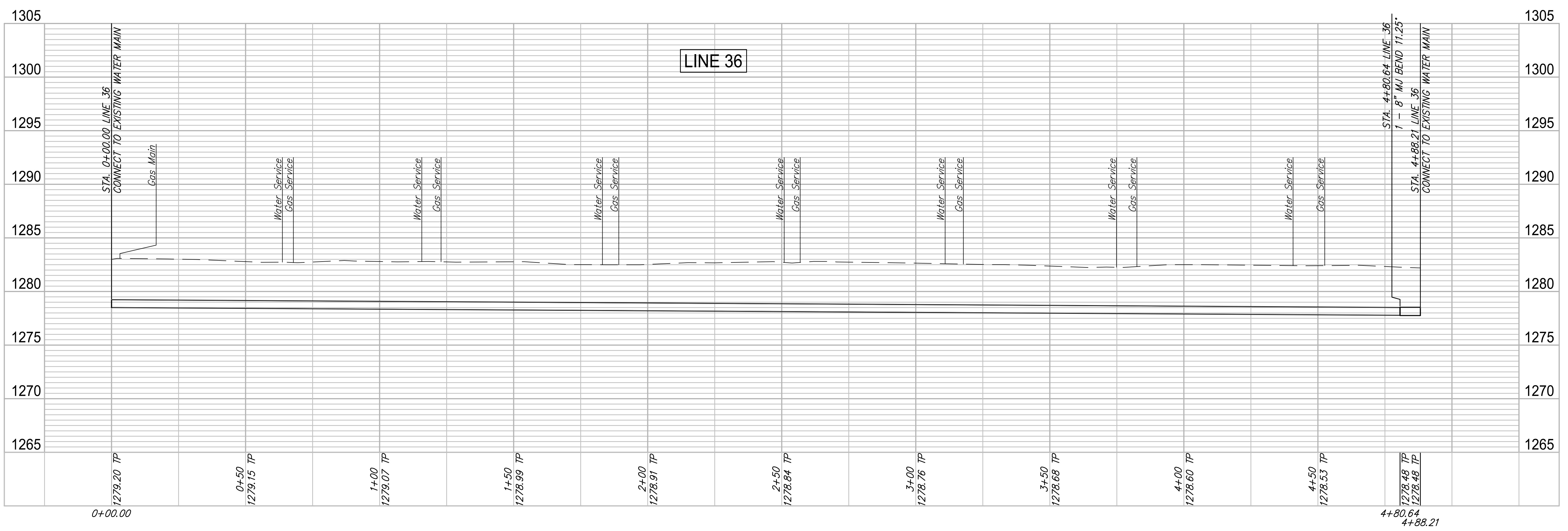
N 1671757.47 E 1656812.78
STA. 4+88.21, LINE 36 =
STA. 6+09.35 SCOTT, 25.80' LT.
CONNECT TO EXIST. 6" MAIN
* 1-6" TAPPING VALVE
* 1-6"x6" TAPPING SLEEVE
** 1-6" VALVE BOX ASS'Y.
VALVE BOX ELEV. 1282.20
1-6"x8" REDUCER
* SUPPLIED AND INSTALLED BY
CITY OF WICHITA WATER DEPT.
** SUPPLIED BY C.O.W.
INSTALLED BY CONTRACTOR

1903 E SCOTT
WAGONER, STEVEN P
& DEIDRE S

| WATER METER SUMMARY | | | | |
|---------------------|---------|-------------------------|--------------|----------|
| BL Station | Lt./Rt. | Service (Long or Short) | Address | As Built |
| 1+73 | Rt. | Long | 1903 E SCOTT | |
| 1+85 | Lt. | Short | 1902 E SCOTT | |
| 2+37 | Lt. | Short | 1908 E SCOTT | |
| 2+43 | Rt. | Long | 1909 E SCOTT | |
| 3+04 | Lt. | Short | 1914 E SCOTT | |

| WATER METER SUMMARY | | | | |
|---------------------|---------|-------------------------|--------------|----------|
| BL Station | Lt./Rt. | Service (Long or Short) | Address | As Built |
| 3+16 | Rt. | Long | 1915 E SCOTT | |
| 3+72 | Lt. | Short | 1920 E SCOTT | |
| 3+83 | Rt. | Long | 1921 E SCOTT | |
| 4+32 | Lt. | Short | 1926 E SCOTT | |
| 4+50 | Rt. | Long | 1927 E SCOTT | |

| WATER METER SUMMARY | | | | |
|---------------------|---------|-------------------------|--------------|----------|
| BL Station | Lt./Rt. | Service (Long or Short) | Address | As Built |
| 4+96 | Lt. | Short | 1932 E SCOTT | |
| 5+28 | Rt. | Long | 1933 E SCOTT | |
| 5+62 | Lt. | Short | 1938 E SCOTT | |
| 5+92 | Rt. | Long | 1939 E SCOTT | |



ROSE MARIE WATER - Part B
Scott - Line 36
Wichita, Kansas

PROJECT NUMBER: 448-30721
DRAWING FILE: 4701W Engineering Base Area 1

DESIGN: CMB / RA
DRAWN: DRS / RA

REVIEW: 5-24-2017
DATE: 4/2/2018

GARVER JOB: 16264701
SHEET: 41 OF 53
© Copyright 2018, Garver